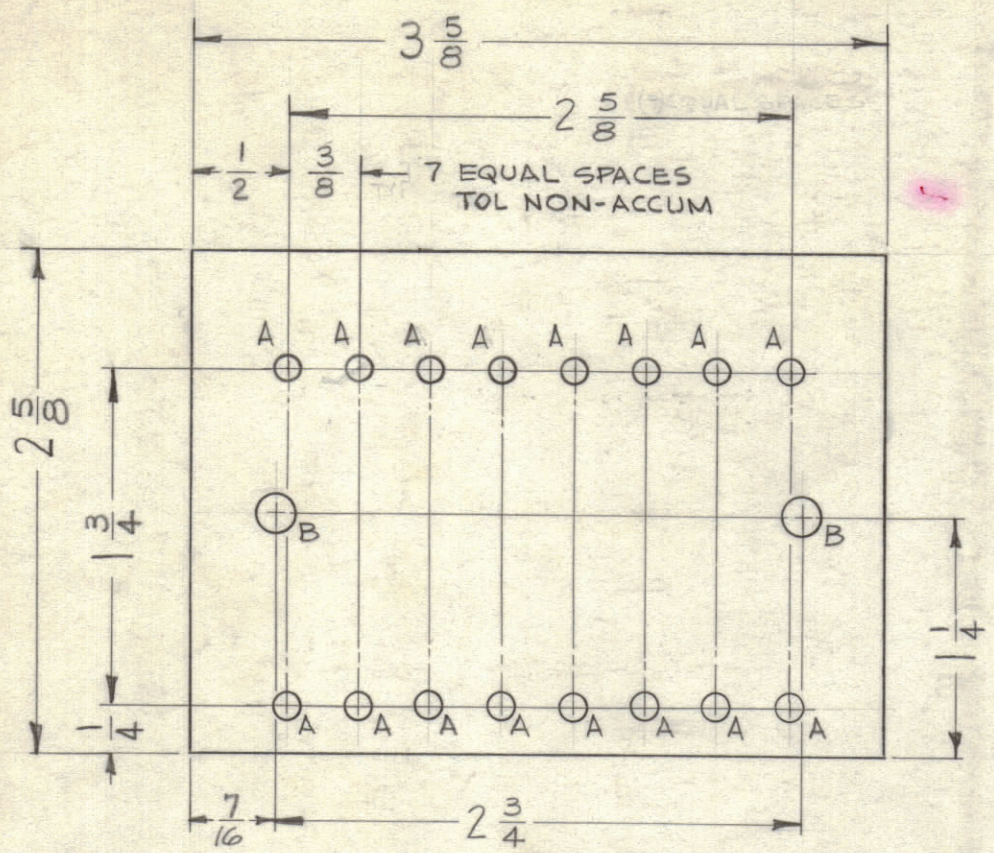


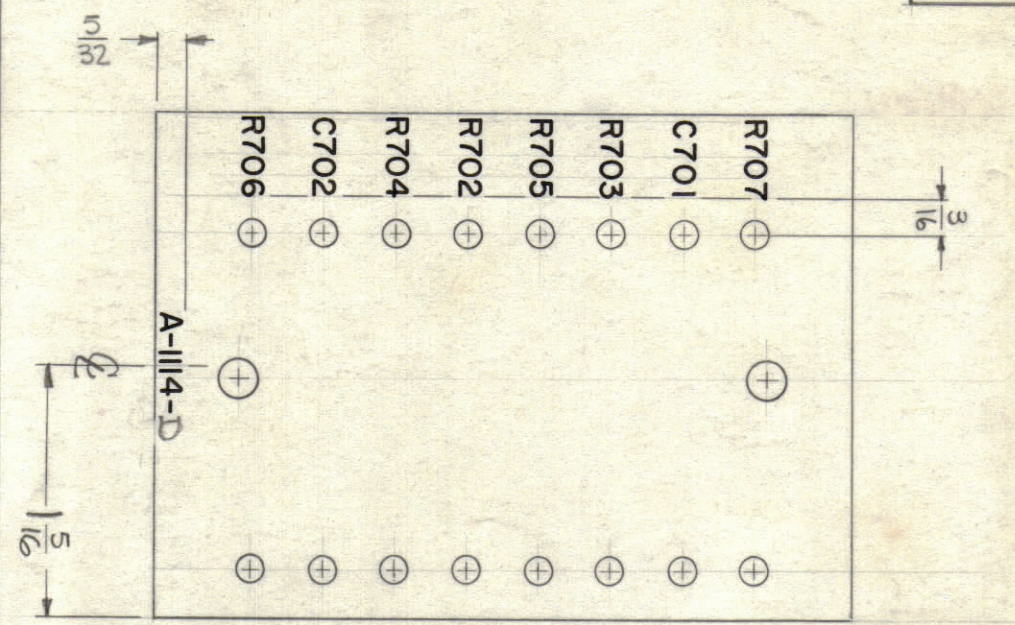
LEGEND		
HOLE	DESCRIPTION	REQ
A	*32(.116) DIA	16
B	*12(.189) DIA	2

UNLESS OTHERWISE SPECIFIED  
 1- ALL LETTERING TO BE 1/8 HIGH, BLACK GOTHIC.  
 2- LETTERING TO BE CENTERED ON HOLES.  
 3- MARKING PROCESS: AS PER TMC SPECIFICATION S-727.  
 4- APPLY S-113 AFTER MARKING \*

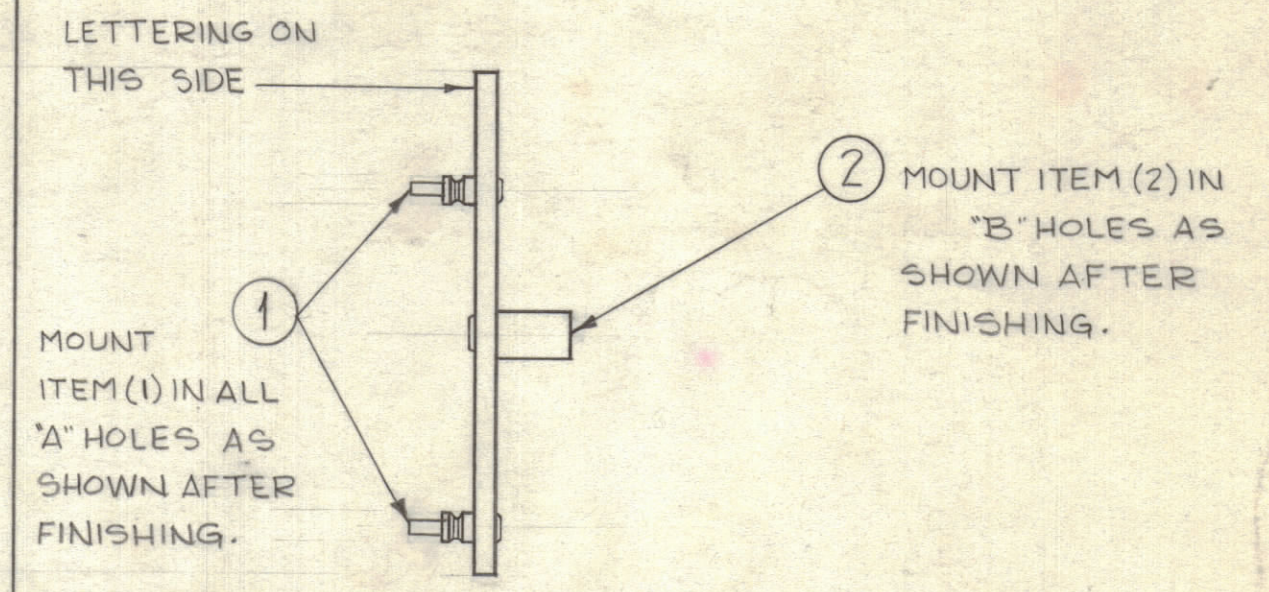
REVISIONS						
ZONE	SYM	DESCRIPTION	DATE	E.M.N. NO.	DRAFT	CHKD
-	C	REDRAWN & REVISED (WAS SIZE 2)	3-7-63	8308		
H4	D	S-113 ADDED	4-13-64	11186	APB	
	E	DELE. DEC. PT. IT. B-11. IT. 4, 5 & 7 TOL WAS "K"	11/9/66	CC	RME	



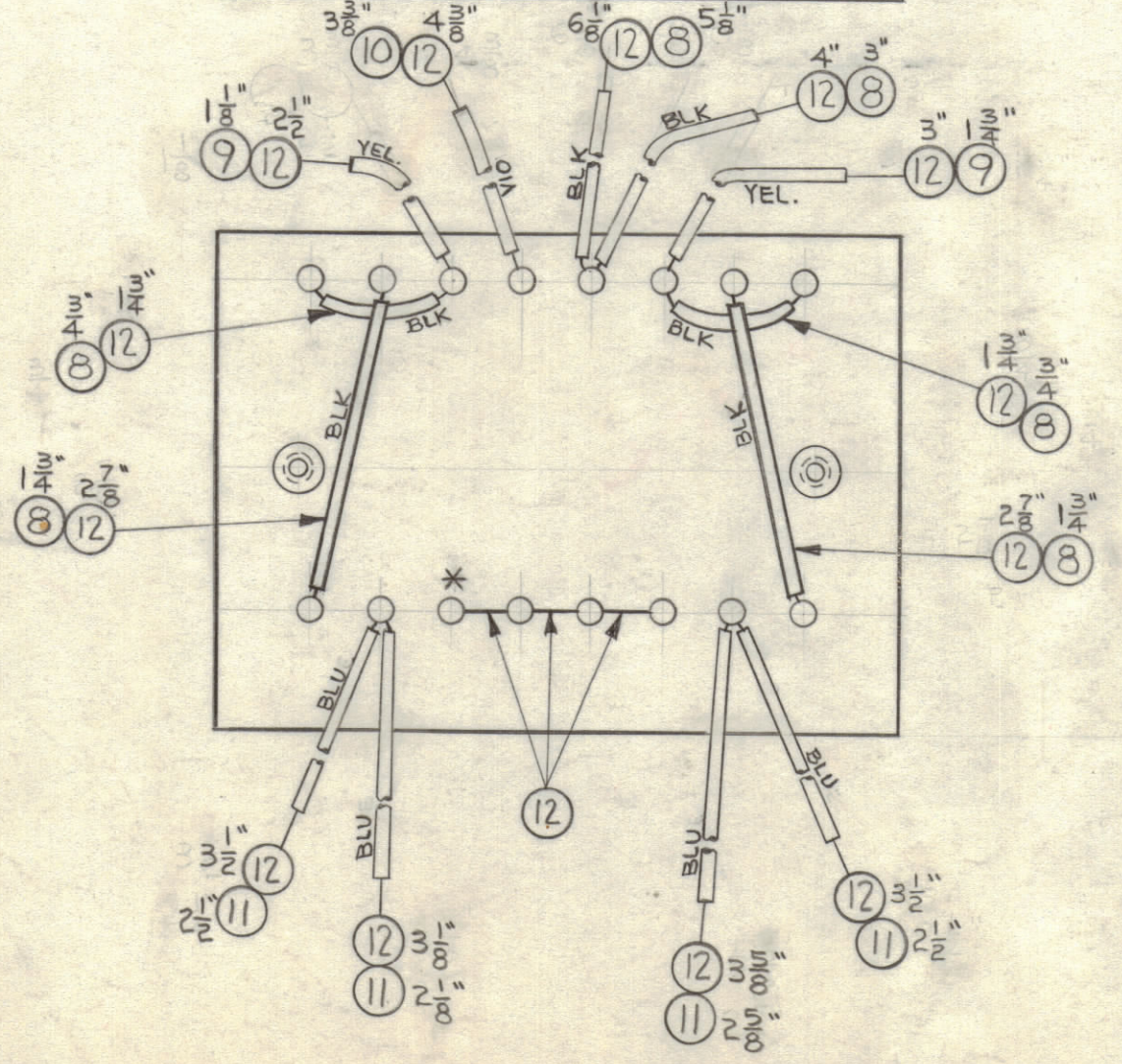
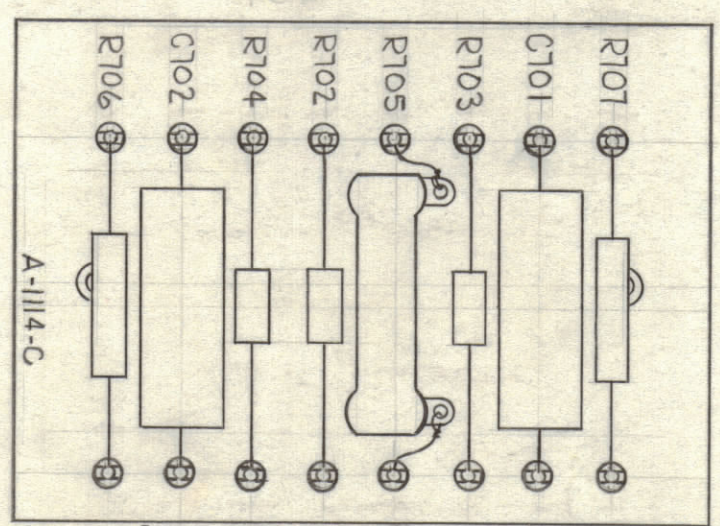
STAGE 1 - MACHINING (A-1114-1)  
 MATERIAL: 1/8 THK, XXXP PHENOLIC LAMINATE;  
 FINISH: NATURAL



\* FUNGUS PROOFING PER TMC SPECIFICATION S-113  
 STAGE 2 - LETTERING (A-1114-2)



STAGE 3 - SUB-ASSY (A-1114-3)



STAGE 4 - FINAL ASSY. (A-1114-4)

NOTE:  
 \* - DO NOT SOLDER

REQ'D.	ITEM	PART NUMBER	DESCRIPTION	SYMBOL
X	13	BS-100	SOLDER, SOFT	
43	12	WL-100-7	WIRE, BUSS #22	
9 3/4	11	PX-104-6-022	SLEEVING, INSULATION	BLUE
3 10/16	10	PX-104-9-022		VIOLET
2 10/16	9	PX-104-2-022		YELLOW
13 1/8	8	PX-104-1-022	SLEEVING, INSULATION	BLACK
2	7	RC32GF823J	RESISTOR, FIXED COMPOSITION	R706 R707
1	6	RW-109-9	RESISTOR, FIXED, W-W	R705
2	5	RC20GF223J	RESISTOR, FIXED COMPOSITION	R703 R704
1	4	RC20GF561J	RESISTOR, FIXED COMPOSITION	R702
2	3	CN-100-17	CAPACITOR, FIXED, PAPER DIELECTRIC	C701 C702
2	2	TE-108-13	STANDOFF, RIVET TYPE	B
16	1	TE-109-3	TERMINAL LUG, SPLIT	A

LIST OF MATERIAL				
MATERIAL	SEE STAGE 1	THE TECHNICAL MATERIEL CORP. MAMARONECK, NEW YORK		
FINISH	SEE STAGE 2	TITLE TERMINAL BOARD ASSY, MODULATOR		
UNLESS OTHERWISE SPECIFIED DIMENSIONS ARE IN INCHES AND INCLUDE CHEMICALLY APPLIED OR PLATED FINISHES	DRAWN <i>G. Zinner</i>	DATE 3-7-63	FINAL APPROVAL <i>BP</i>	DATE
DECIMALS .X ± .05 .XX ± .01 .XXX ± .005	TOLERANCES	FRACTIONS ± 1/64 ANGLES ± 0° 30'	ELECT. DES. MECH. DES.	DATE
		A-1114		E
		SHEET		REV. LTR.

1	RTM-2	ASS'Y. NO.
QTY./UNIT	MODEL USED ON	
SCALE FULL	CODE	
THE CONTENTS OF THIS DRAWING ARE THE EXCLUSIVE PROPERTY OF THE TECHNICAL MATERIEL CORP. ITS UNAUTHORIZED USE OR REPRODUCTION IN WHOLE OR IN PART IS STRICTLY FORBIDDEN.		

NOTES

A-1114  
E