

A-1103 B

USED ON	
REQ. PER UNIT	ASSY. NO.
1	RTF
1	MULT.
	DATE
	9/29/55
	11-20-58

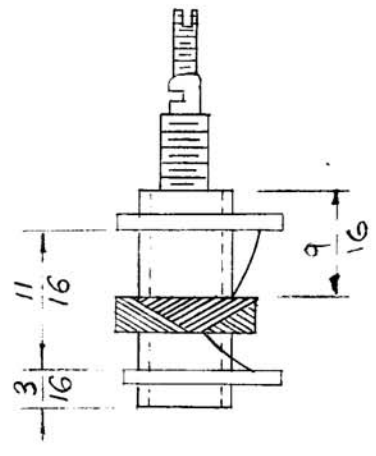
WINDING.
35 TURNS OF ITEM 2.
36 DSC.

WINDING MACHINE DATA
DRIVER GEAR 95
CAM GEAR 49
CAM .125

FABRICATION -
1- STAKE COIL ENDS TO COIL FORM WITH ITEM 3.
2- COAT COIL WITH ITEM 4.
3- BAKE 1 HOUR AT 2700 F.
4- SOLDER LEADS AS SHOWN

TEST DATA

L - MIN. 17.2 mhy } ±20%
L - MAX. 28.0 mhy }
Q: 40 OR GREATER
F: 2.5 MC.



REQ. ITEM	PART NO.	DESCRIPTION	SYMBOL
X 5	BS-100	SOLDER, SOFT	
X 4	GL-104-2	INSULEX, U83	
X 3	GL-103	CEMENT	
X 2	WI-107-17	WIRE, #36 DSC	
1	CF-107-2N	COIL FORM	

THE TECHNICAL MATERIEL CORP. MAMARONECK, NEW YORK	
COIL ASSY., 2-4 MC.	
MULTIPLIER - L203 GPT-750	
CON	A.J.J.
DRAWN	FINAL APPROVAL
D.P.	
ELEC. DES. APP.	MECH. DES. APP.
	A-1103 B

ISSUE ITEM	CHANGED FROM	DATE	CH. NO.	DRAFTS	CHECKER	ENG. APP.
B	2 TOLERANCE WAS 5% 1 WAS 50 OR GREATER	4-5-61	4594	DM	J.P.	
A	2 CAM - WAS 185 1 ITEM 2 WAS WI-120-17	1-20-56	1	P	P.P. A.J.J.	

TOLERANCES	
DEC. DIM. ±	MAXIMUM ALLOWABLE TOLERANCES HAVE BEEN DETERMINED AND ANY DEVIATIONS WILL BE CAUSE FOR REJECTION.
FRAC. DIM. ±	REMOVE ALL BURRS AND SHARP EDGES
ANGULAR DIM. ±	