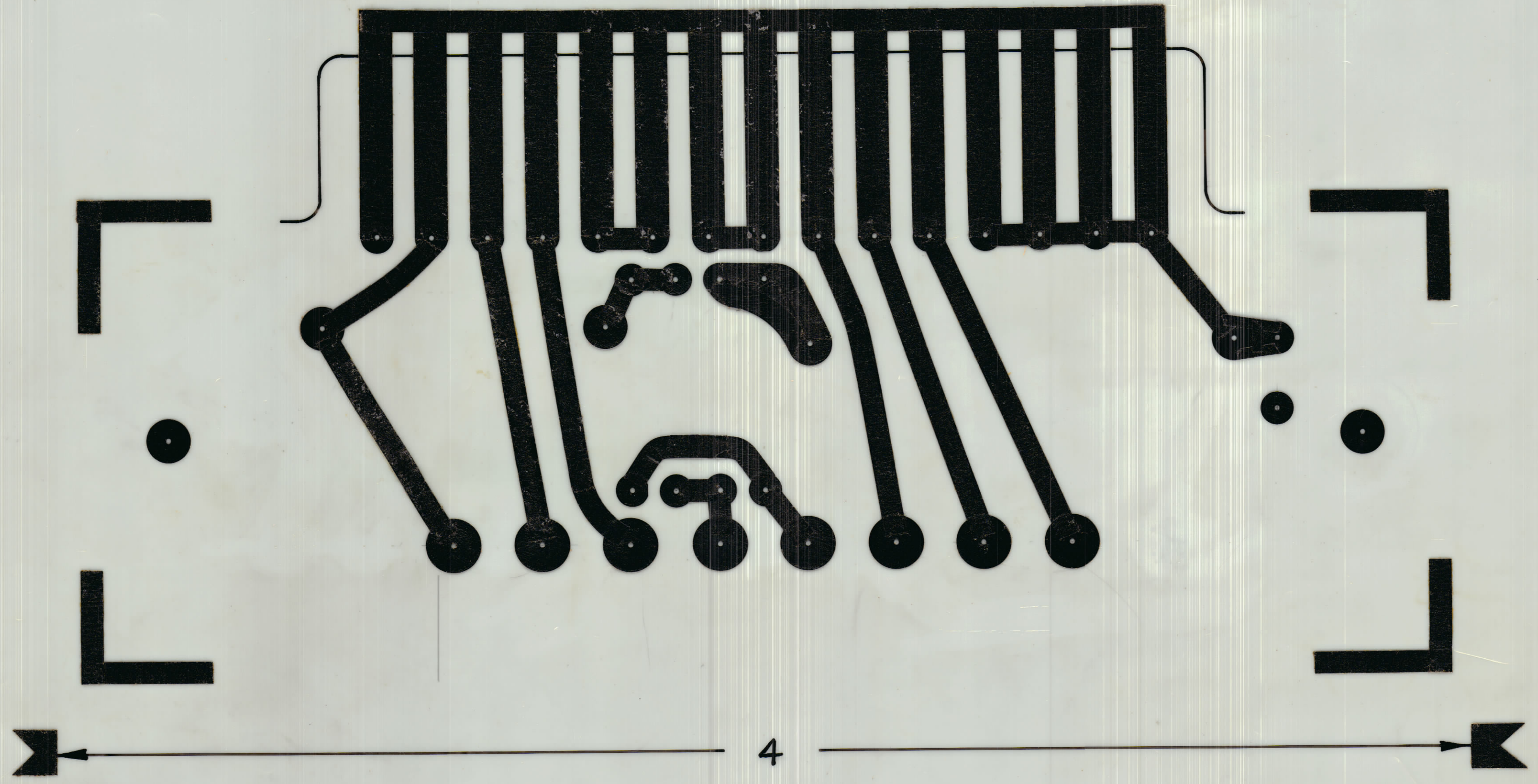


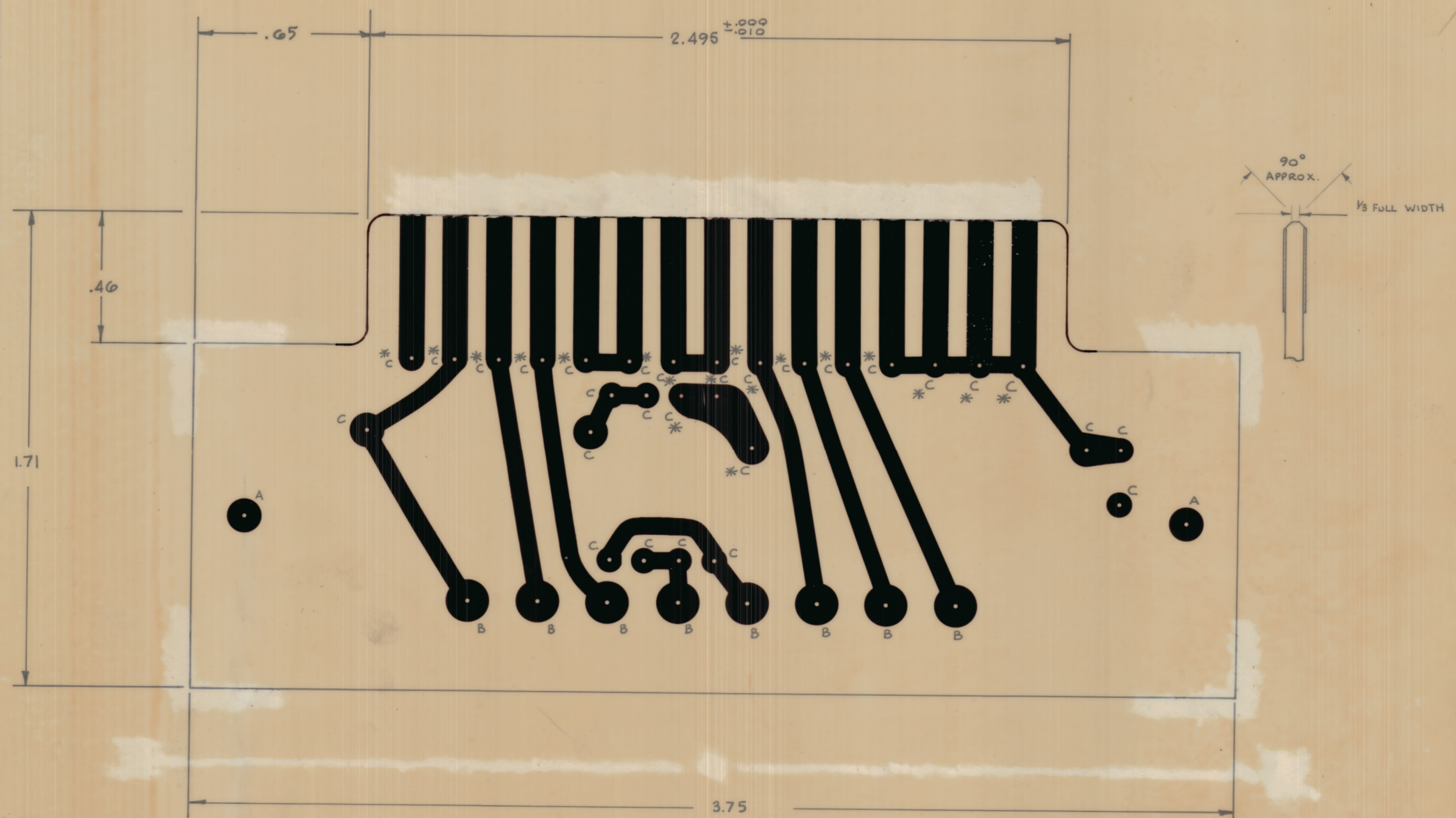
REVISIONS							
ZONE	SYM	DESCRIPTION	DATE	E.M.N. NO.	DRAFT	CHKD	APPD
X		ENG. RELEASE	MAR 10/70				<i>[Signature]</i>



SCALE 4:1
 NEGATIVE 1:1
 BOTTOM PATTERN

MODEL	082/70	PROJECT NO.	A10873-5	ASS'Y. NO.	11MAR 70	DATE		TMC (Canada) LIMITED OTTAWA ONTARIO			
USED ON							STOCK SIZE	POWER SUPPLY BOARD			
MAXIMUM ALLOWABLE TOLERANCES HAVE BEEN DETERMINED AND DEVIATIONS WILL BE CAUSE FOR REJECTION. REMOVE ALL BURRS AND SHARP EDGES.							MATERIAL		A.C. (ETCHING)		
							TYPE & TEMPER			PROCTOR	
TOLERANCES							SCALE		DRAWN	ELEC. DES. APP.	MECH. DES. APP.
							DIMENSIONS IN INCHES UNLESS OTHERWISE SPECIFIED		CHECKED		
ALL OTHERS	DEC. DIM. ±	DRILL, PUNCH, COMMERCIAL STOCK SIZES AND MANUFACTURERS TOLERANCES ARE NOT INCLUDED.				FINISH & SPEC. NO.		SHEET 1 OF 6 A10873-1		X	

REVISIONS						
ZONE	SYM	DESCRIPTION	DATE	E.M.N. NO.	DRAFT	CHKD
X		ENG. RELEASE	MAR 10/70			

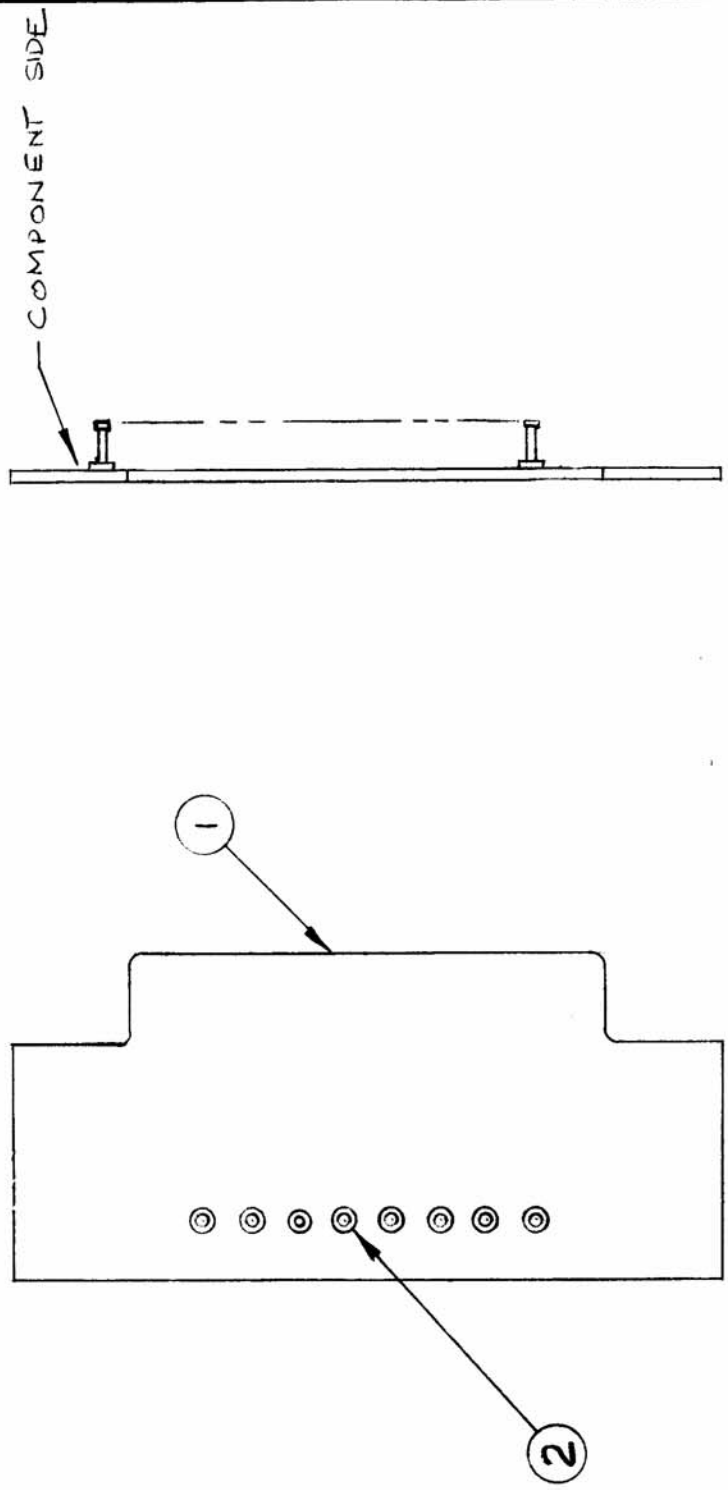


- NOTES:
1. MATERIAL : FL-GE-062-2/2
 2. FINISH: TIN LEAD PLATE .0003 ALL OVER EXCEPT EDGE CONNECTOR WHICH IS TO BE PLATED WITH A MINIMUM OF .0001 GOLD.
 3. TO BE IN ACCORDANCE WITH TMC SPEC. S735.
 4. C HOLES INDICATED THUS * TO BE PLATED THROUGH HOLE SIZE INDICATED IS AFTER PLATING.

HOLE DATA		
HOLE	DESCRIPTION	QTY
A	.140 DIA	2
B	.078 DIA	8
C	.052 DIA.	29

MODEL	082/70	PROJECT NO.	A10873-1	ASSY. NO.	11MAR 70	DATE		TMC (Canada) LIMITED OTTAWA ONTARIO	
USED ON							STOCK SIZE		Power Supply Board
MAXIMUM ALLOWABLE TOLERANCES HAVE BEEN DETERMINED AND DEVIATIONS WILL BE CAUSE FOR REJECTION REMOVE ALL BURRS AND SHARP EDGES							MATERIAL		A.C.
IF IT IS FOUND DESIRABLE TO CHANGE ANY TOLERANCE OR OTHER DETAIL SPECIFIED ON THIS DRAWING NOTIFY THE PURCHASER PROMPTLY.							WEIGHT PER PC		PROCTOR
TOLERANCES							TYPE & TEMPER		DRAWN
SCALE							HEAT TREAT SPEC		ELEC DES 477
DIMENSIONS IN INCHES UNLESS OTHERWISE SPECIFIED							FINISH & SPEC. NO.		CHECKED
DRILL PUNCH COMMERCIAL STOCK SIZES AND MANUFACTURERS TOLERANCES ARE NOT INCLUDED.							FINISH & SPEC. NO.		FINAL APPROVAL
ALL DEC DIM. 1 OTHERS							FINISH & SPEC. NO.		SHEET 3 OF 6
							FINISH & SPEC. NO.		A10873-2
							FINISH & SPEC. NO.		X

ISSUE	ITEM	CHANGED FROM	DATE	CN. NO.	DRAFTS	CHECKER	ENG. APP.	REQ.	ITEM	PART NO.	DESCRIPTION	SYMBOL
X		ENG RELEASE	MAR 11/70		<i>WJ</i>			1	1	A10873-3	POWER SUPPLY BD AC	
								8	2	TE 127-2	TERMINAL STUD	



STR-5		PROJECT NO.	A10873-5	DATE	
MODEL		ASSY. NO.		USED ON	
MAXIMUM ALLOWABLE TOLERANCES HAVE BEEN DETERMINED AND DEVIATIONS WILL BE CAUSE FOR REJECTION. REMOVE ALL BURRS AND SHARP EDGES		IF IT IS FOUND DESIRABLE TO CHANGE ANY TOLERANCE OR OTHER DETAIL SPECIFIED ON THIS DRAWING NOTIFY THE PURCHASER PROMPTLY.			
TOLERANCES		SCALE	1/1	DIMENSIONS IN INCHES UNLESS OTHERWISE SPECIFIED	
ALL OTHERS	DEC. DIM. ±	DRILL, PUNCH, COMMERCIAL STOCK SIZES AND MANUFACTURERS TOLERANCES ARE NOT INCLUDED.			
	FRAC. DIM. ±				
	ANGULAR DIM. ±				
TMC (Canada) LIMITED OTTAWA ONTARIO		STOCK SIZE		WEIGHT PER PC.	
POWER SUPPLY BD AC		MATERIAL		TYPE & TEMPER	
(SUB ASSY)		DRAWN		ELEC. DES. APP.	MIC
PROCTOR		CHECKED		IN A. APPROVAL	
SHEET 5 of 6		A10873-4		X	

ISSUE	ITEM	CHANGED FROM	DATE	ENGR	CHECKER	DATE	NO.
X		ENG RELEASE	MAR 70				

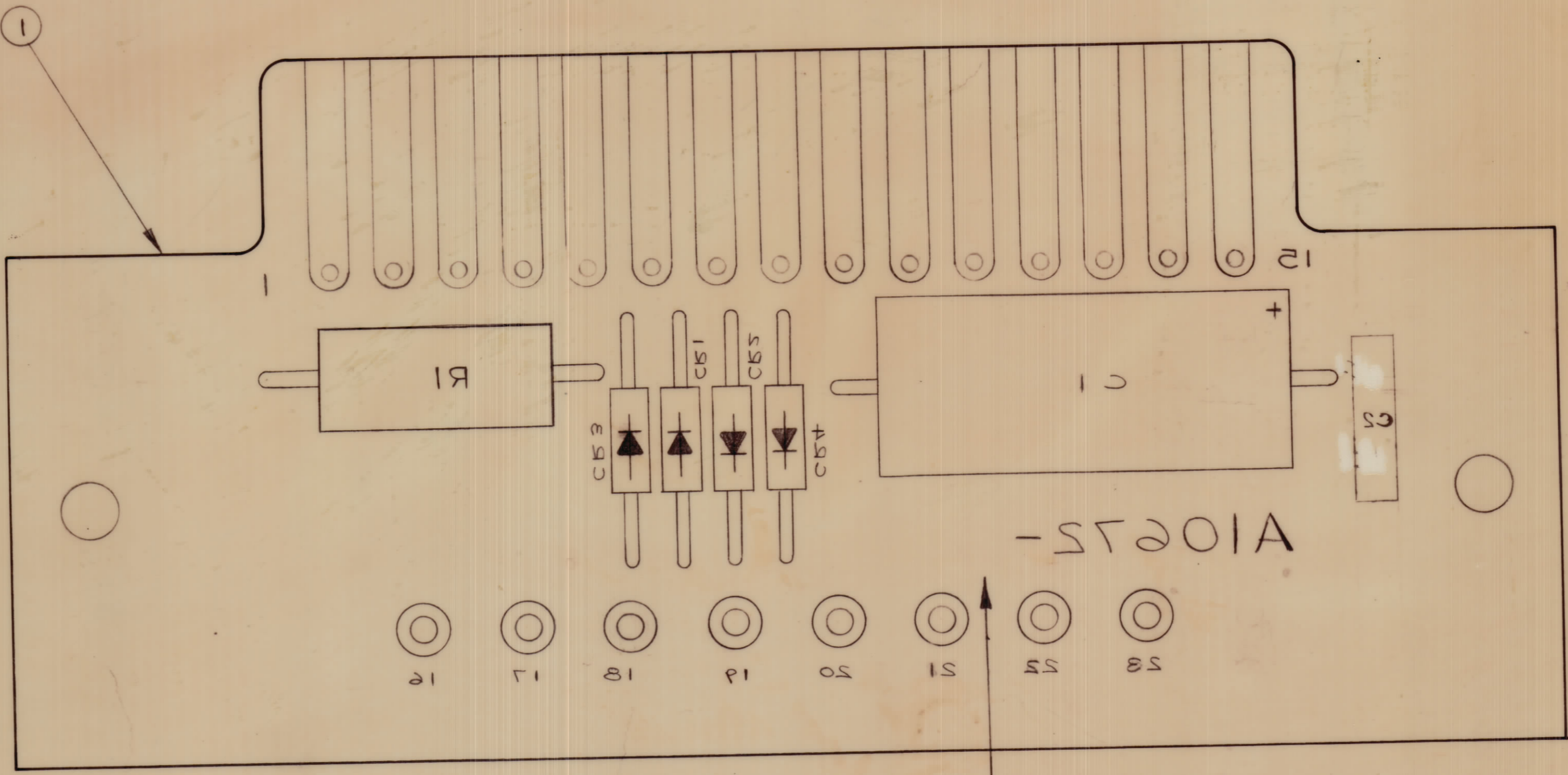
IT IS FOUND DESIRABLE TO CHANGE ANY TOLERANCE OR OTHER DETAIL SPECIFIED ON THIS DRAWING NOTIFY THE PURCHASER PROMPTLY. MAXIMUM ALLOWABLE TOLERANCES HAVE BEEN DETERMINED AND DEVIATIONS WILL BE CAUSE FOR REJECTION. REMOVE ALL BURRS AND SHARP EDGES.

DIMENSIONS IN INCHES UNLESS OTHERWISE SPECIFIED.

SYMBO	DESCRIPTION	PART NO	ITEM	REQ
	DIODE		4	4
	CAPACITOR		3	3
R1	RESISTOR FIXED		2	1
	POWER SUPPLY BD.	A10873-4	1	1

CRT CRT CRT CRT

NOTE: REF TO MATERIAL LIST FOR ELECTRICAL COMPONENT PART NO'S.



A10873-2 X

ADD LATEST REV. LETTER TO TMC PART NO.

FINISH & REC. NO.	SHEET 2 OF 2	A10873-2	X
HEAT TREAT. SPEC.	CHECKED		
TYPE & TEMPER.	PROCTOR		
MATERIAL	(FINAL ASSEMBLY)		
WEIGHT PER PCB	POWER SUPPLY PCB AC		
STOCK SIZE	OTTAWA		
TMC (Canada) LIMITED			

MODEL	PROJECT NO.	DATE
	082/70	10 MAR 70

TOLERANCES	SCALE
ALL DEC DIM ±	
FRACTIONAL DIM ±	
ANGULAR DIM ±	
TOLERANCES ARE NOT INCLUDED IN DRILL, PUNCH, COMMERCIAL STOCK SIZE AND MANUFACTURERS	