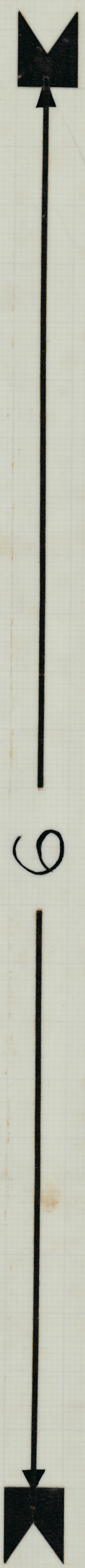


REL TO PROD	27/8
PER CEHN	27/8 534 RR



SCALE 4:1
 NEGATIVE 1:1
 REF. BOTTOM PATTERN

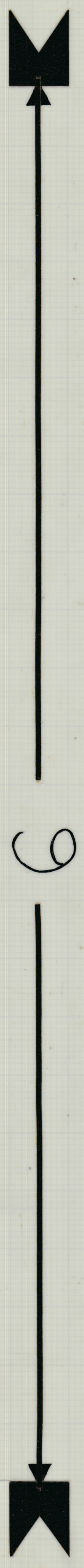
REF. A10791-2 FOR PLATING NOTES

TMC (Canada) LIMITED OTTAWA		ONTARIO	
PC ASSY OUTPUT AMC/LMC-32		DATE 7-27-69	
DESIGNER	DATE	USED ON	DATE
CHKD BY	DATE	PROJECT NO.	DATE
APPROVED	DATE	IF IT IS FOUND NECESSARY TO CHANGE THIS DRAWING, THE CHANGES MUST BE SPECIFIED ON THE DRAWING NOTIFY THE PURCHASER PROMPTLY.	
MATERIAL		SCALE 4:1	
TYPE & TEMPER		DIMENSIONS IN INCHES	
HEAT TREAT SPEC.		TOLERANCES UNLESS OTHERWISE SPECIFIED	
FINISH & SPEC. NO.		TOLERANCES UNLESS OTHERWISE SPECIFIED	
FINISH APPROVAL		TOLERANCES UNLESS OTHERWISE SPECIFIED	
SHT / OF 6 A10791-1		A	

1945

ZONE	SYM	DESCRIPTION	DATE	ENL. NO.	DRAFT CHG.	APPD.
	Ø	REL TO PROD.	29/7/69		GR	
	A	PER CEMN	17/8/69	534	RR	

REVISIONS



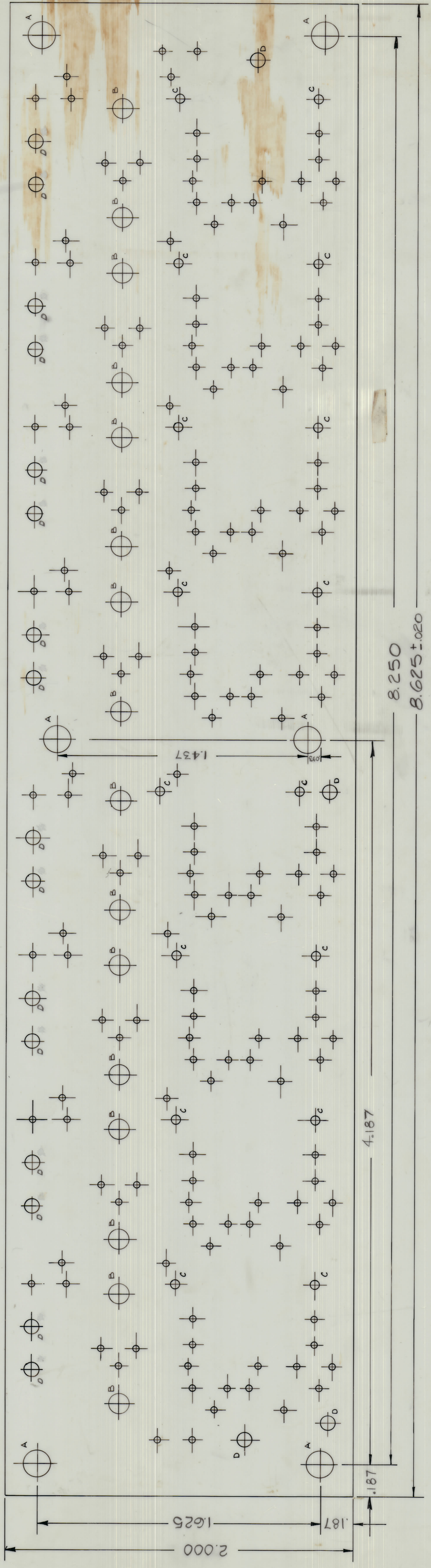
SCALE 4:1
 NEGATIVE 1:1
 REF. TOP PATTERN

REF A10791-2 FOR PLATING NOTES

LMC-32 098/69 MODEL PROJECT NO. USED ON DATE 7-25-69		T.M.C. (Canada) LIMITED TORONTO, CANADA	
MATERIAL AMC / LMC-32 TYPE & QUANTITY 98		PC. ASSY OUTPUT AMC / LMC-32	
ALL DIMENSIONS IN MILLIMETERS UNLESS OTHERWISE SPECIFIED TOLERANCES UNLESS OTHERWISE SPECIFIED:		CHECKED BY SAT 20 FG DATE 10/791-1 A	
ALL DIMENSIONS UNLESS OTHERWISE SPECIFIED:	TOLERANCES UNLESS OTHERWISE SPECIFIED:	FINISH APPROVAL:	DATE:

1945

DATE	BY	CHKD BY	APPROVED	DATE
0	REL TO PROD.			
A	REVISED AS PER COMM.	534		
B	CHANGES D	1448, 878, 774/14		806



HOLE	DESCRIPTION	REQ'D
A	.140 DIA	6
B	.109 DIA	16
C	.053 DIA	16
D	.078 ±.003 DIA	20
UNMARKED	.035	∞

- NOTES:
- (1) MATERIAL: PLASTIC SHEET, LAMINATED COPPER CLAD FL-GE-062-C-2/2 PER MIL-P-13949
 - (2) ALL HOLES TO BE PLATED THRU PLATED WITH A MINIMUM WALL THICKNESS OF .001 OF COPPER
 - (3) CONDUCTIVE PATTERN TO BE: PLATED WITH A MINIMUM OF .0003 INCH OF TIN LEAD
 - (4) THIS BOARD SHALL MEET THE REQUIREMENTS OF TMC'S SPEC 735

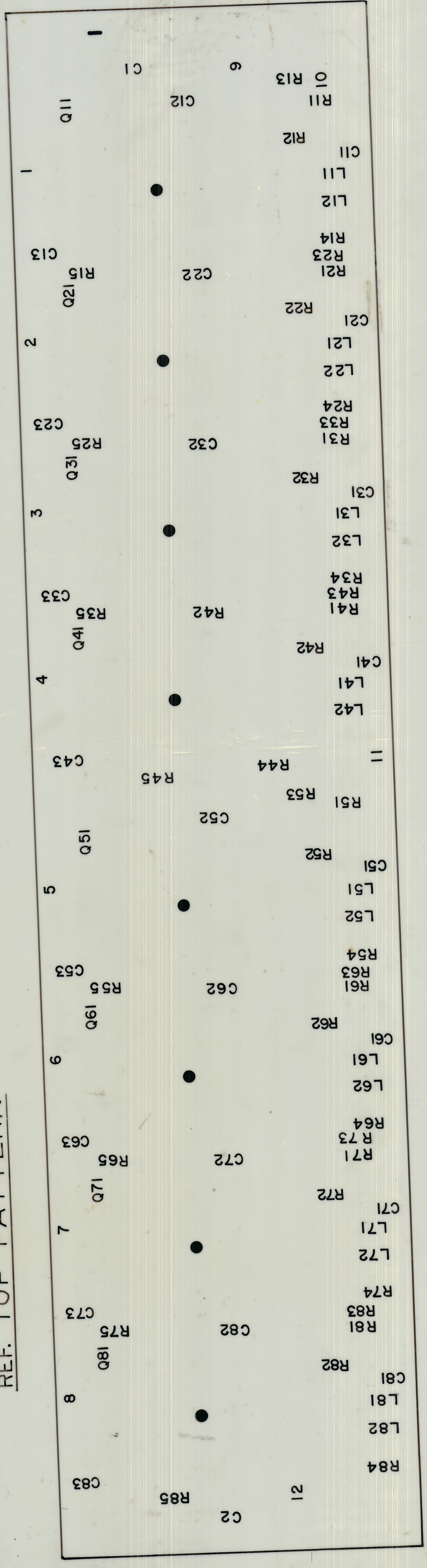
L/MC-32		098/09	DATE	09/11
MODEL		PROJECT NO.	DATE	09/11
DRAWN		APPROVED	DATE	09/11
CHECKED		DATE	09/11	09/11
TMC (Canada) LIMITED OTTAWA ONTARIO		PC-ASSY OUTPUT AMC/LMC-32		
SHT 3 OF 6		A10791-2		

DATE	DESIGNED BY	DATE	IN CH.	DRAWN	CHECKED	APP.
REL TO PROD.	GR.					
A	CONFIRMED AND CANN.	7/1/53	RR			

SCALE 4:1

NEGATIVE 1:1

REF. TOP PATTERN



- (1) WHITE EPOXY PAINT
- (2) HEIGHT OF CHARACTERS .093 ±.015
- (3) WIDTH OF LINES .015 ±.010
- (4) AS PER TMC SPEC. S727
- (5) DOT 1/16 DIA
- (6) HEIGHT OF BOARD NO. CHARACTERS .125 ±.015
- (7) LINE WIDTH OF BOARD NO. CHARACTERS .020 ±.005

PROJECT NO.	7-37-69
DATE	7-37-69
USED ON	
DESIGNED BY	
CHECKED	
APPROVED	
DATE	
BY	
REVISIONS	
NO.	DESCRIPTION
1	AS PER TMC SPEC. S727
2	AS PER TMC SPEC. S727
3	AS PER TMC SPEC. S727
4	AS PER TMC SPEC. S727
5	AS PER TMC SPEC. S727
6	AS PER TMC SPEC. S727
7	AS PER TMC SPEC. S727
8	AS PER TMC SPEC. S727
9	AS PER TMC SPEC. S727
10	AS PER TMC SPEC. S727
11	AS PER TMC SPEC. S727
12	AS PER TMC SPEC. S727
13	AS PER TMC SPEC. S727
14	AS PER TMC SPEC. S727
15	AS PER TMC SPEC. S727
16	AS PER TMC SPEC. S727
17	AS PER TMC SPEC. S727
18	AS PER TMC SPEC. S727
19	AS PER TMC SPEC. S727
20	AS PER TMC SPEC. S727
21	AS PER TMC SPEC. S727
22	AS PER TMC SPEC. S727
23	AS PER TMC SPEC. S727
24	AS PER TMC SPEC. S727
25	AS PER TMC SPEC. S727
26	AS PER TMC SPEC. S727
27	AS PER TMC SPEC. S727
28	AS PER TMC SPEC. S727
29	AS PER TMC SPEC. S727
30	AS PER TMC SPEC. S727

TMC (Canada) LIMITED	PC ASSY OUTPUT
OTTAWA	LMC-32
DATE	7/1/53
BY	RR
CHECKED	
APPROVED	
DATE	
BY	
REVISIONS	
NO.	DESCRIPTION
1	AS PER TMC SPEC. S727
2	AS PER TMC SPEC. S727
3	AS PER TMC SPEC. S727
4	AS PER TMC SPEC. S727
5	AS PER TMC SPEC. S727
6	AS PER TMC SPEC. S727
7	AS PER TMC SPEC. S727
8	AS PER TMC SPEC. S727
9	AS PER TMC SPEC. S727
10	AS PER TMC SPEC. S727
11	AS PER TMC SPEC. S727
12	AS PER TMC SPEC. S727
13	AS PER TMC SPEC. S727
14	AS PER TMC SPEC. S727
15	AS PER TMC SPEC. S727
16	AS PER TMC SPEC. S727
17	AS PER TMC SPEC. S727
18	AS PER TMC SPEC. S727
19	AS PER TMC SPEC. S727
20	AS PER TMC SPEC. S727
21	AS PER TMC SPEC. S727
22	AS PER TMC SPEC. S727
23	AS PER TMC SPEC. S727
24	AS PER TMC SPEC. S727
25	AS PER TMC SPEC. S727
26	AS PER TMC SPEC. S727
27	AS PER TMC SPEC. S727
28	AS PER TMC SPEC. S727
29	AS PER TMC SPEC. S727
30	AS PER TMC SPEC. S727

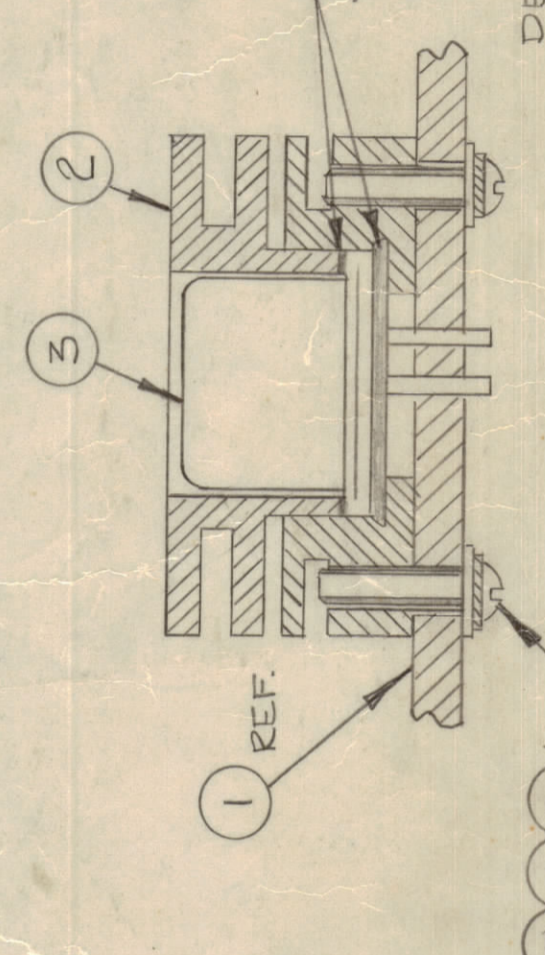
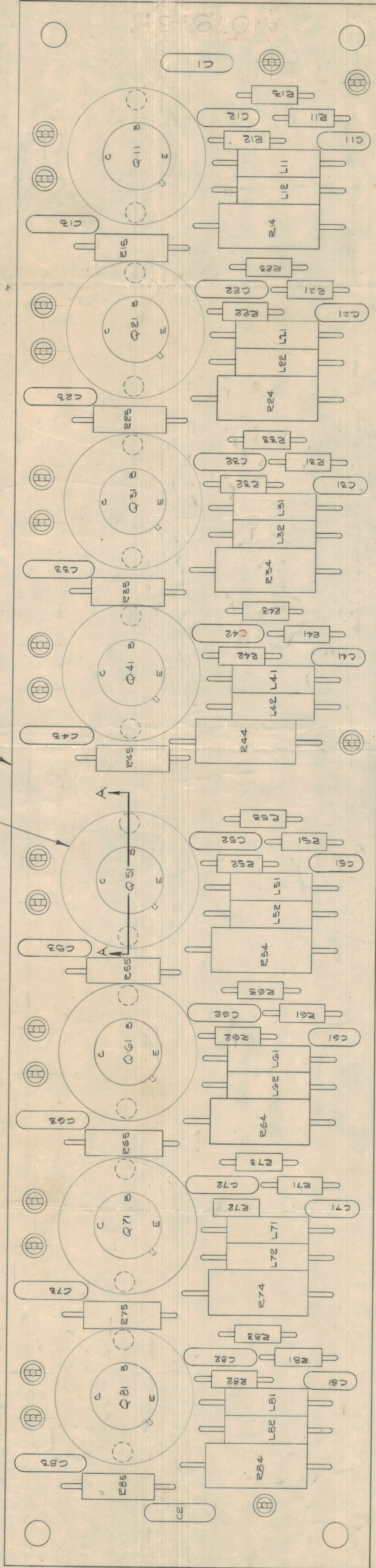
A10791-5 A

ISSUE	ITEM	CHANGED FROM	DATE	BY	CHK'D BY	DESCRIPTION
1	A	REV AS PER CHG 07/01/58	7/1/58	J. K. B.	W. J. B.	584 PR

IF IT IS FOUND NECESSARY TO CHANGE ANY DIMENSIONS OR OTHER DETAILS SPECIFIED ON THIS DRAWING NOTIFY THE PURCHASER PROMPTLY. MAXIMUM ALLOWABLE TOLERANCES HAVE BEEN DETERMINED AND SPECIFIED. DIMENSIONS NOT SPECIFIED WILL BE CASE FOR REJECTION REMOVE ALL BURRS AND SHARP EDGES.

REV	ITEM	PART NO.	DESCRIPTION	SYMBOL
1	1	A10791-4	PC ASSY OUTPUT	
2	2	H010004	HEAT SINK	
3	3	2N3866	TRANSISTOR	
4	4		RESISTOR FIXED	
5	5		CAPACITOR FIXED	
6	6		COIL, RF	
7	7	FW02HSS	WASHER FLAT	
8	8	LW02MBS	WASHER LOCK EXTERNAL	
9	9	SCREW M3.5	SCREW MACHINE	
10	10	GL13B	COMPOUND SILICONE H.S.	
11	11	SS100	SOLDER, SOFT	

- Q11, 21, 31, 41, 51, 61, 71, 81
- E11, 21, 31, 41, 51, 61, 71, 81
- C1, 2, 11, 21, 31, 41, 51, 61, 71, 81
- L1, 2, 11, 21, 31, 41, 51, 61, 71, 81
- R1, 2, 11, 21, 31, 41, 51, 61, 71, 81



APPLY HEAT SINK COMPOUND GLI3B (ITEM 10) TO BOTH FACES OF THE TRANSISTOR FLANGES

DETAIL TYPE FOR Q11 TO Q81

MODEL	PROJECT NO.	DATE
LHC-32	AZ 10007	8-1-63

STOCK SIZE	HEIGHT PER IN.	WEIGHT PER IN.

MATERIAL	TYPE & TEMPER.	FINISH & SPEC. NO.

DESIGNER	CHECKED	DATE

APPROVED	DATE

TMC (Canada) LIMITED
OTTAWA ONTARIO
PC ASSY OUTPUT
LHC/AMC
8/1/63
A10791-5 A

TOLERANCES UNLESS OTHERWISE SPECIFIED	SCALE	4:1
ALL DIMENSIONS		

DRG DIM: X .05
FRAC DIM: XX .01
ANGULAR DIM: CP 30
TOLERANCES ARE NOT INCLUDED