

A 10757-7 A

IF IT IS FOUND DESIRABLE TO CHANGE ANY TOLERANCE OR OTHER DETAIL SPECIFIED ON THIS DRAWING NOTIFY THE PURCHASER PROMPTLY.				DIMENSIONS IN INCHES UNLESS OTHERWISE SPECIFIED			
MAXIMUM ALLOWABLE TOLERANCES HAVE BEEN DETERMINED AND DEVIATIONS WILL BE CAUSE FOR REJECTION. REMOVE ALL BURRS AND SHARP EDGES.							
ISSUE	ITEM	CHANGED FROM	DATE	CN. NO.	DRAFTS	CHECKER	ENG. APP.
Ø		REL TO PROD	MAY 5/69		AP		
A		REVISE PER CEMN	MAY 22/71	907	AFP		

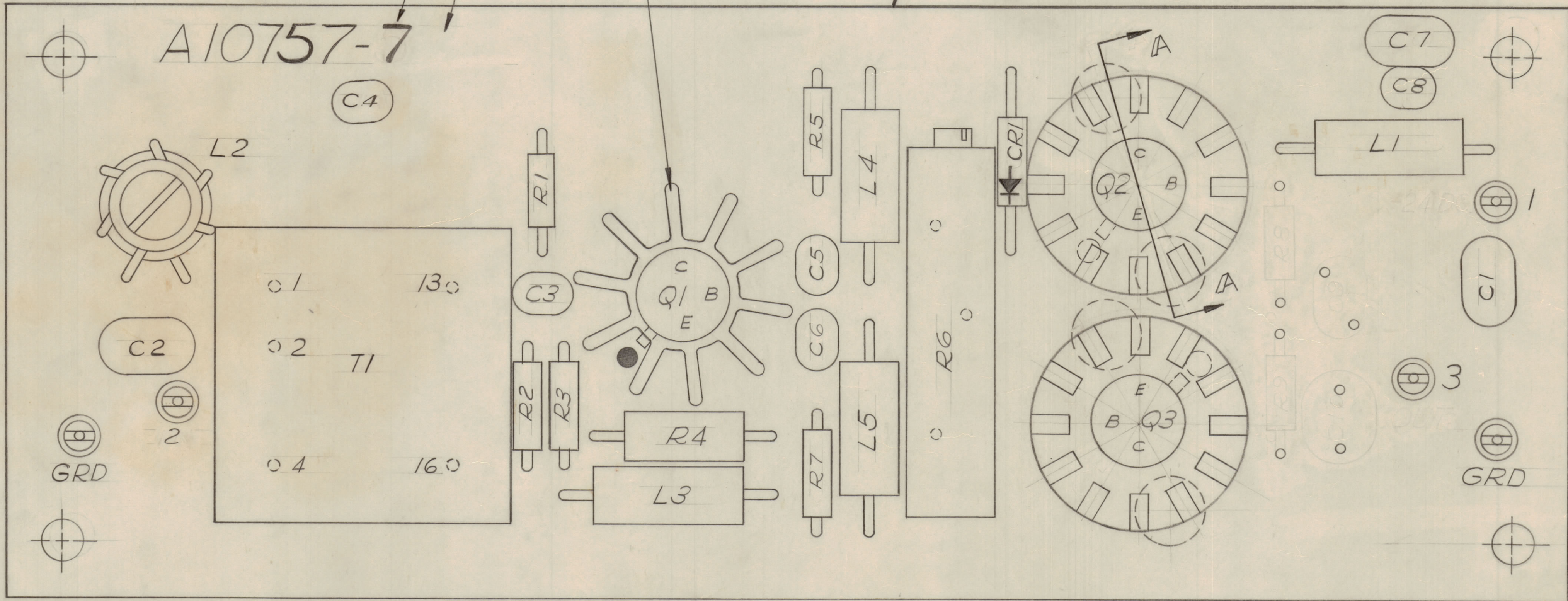
REQ	ITEM	PART NO.	DESCRIPTION	SYMBOL
1	1	A 10757-5	P.C. ASS'Y (SUB) PRE-AMP	
1	2	HD 10002-7	HEAT SINK	
2	3	HD 10007	HEAT SINK	
3	4		TRANSISTOR	Q1, Q2, Q3
6	5		RESISTOR FIXED	
1	6		RESISTOR VARIABLE	R6
8	7		CAPACITOR	
1	8		DIODE	CR1
5	9		COIL RF	
4	10	FW 02 HBN	WASHER - FLAT	
4	11	LWS 02 MRN	WASHER - LOCK-SPLIT	
4	12	SCBP0256BWA	SCREW	
1	13	PX 829-1	PAD TRANSISTOR MTE	
AR	14	GL 138	COMPOUND, SILICONE HS.	
1	15		TRANSFORMER	T1
1	16	SC143-0440-B8W	SCREW	
1	17	NT137-0440	NUT	
2	18	FW 101-3	WASHER	

R1, R2, R3, R4, R5, R7
C1, C2, C3, C4, C5, C6, C7, C8,
L1, L2, L3, L4, L5

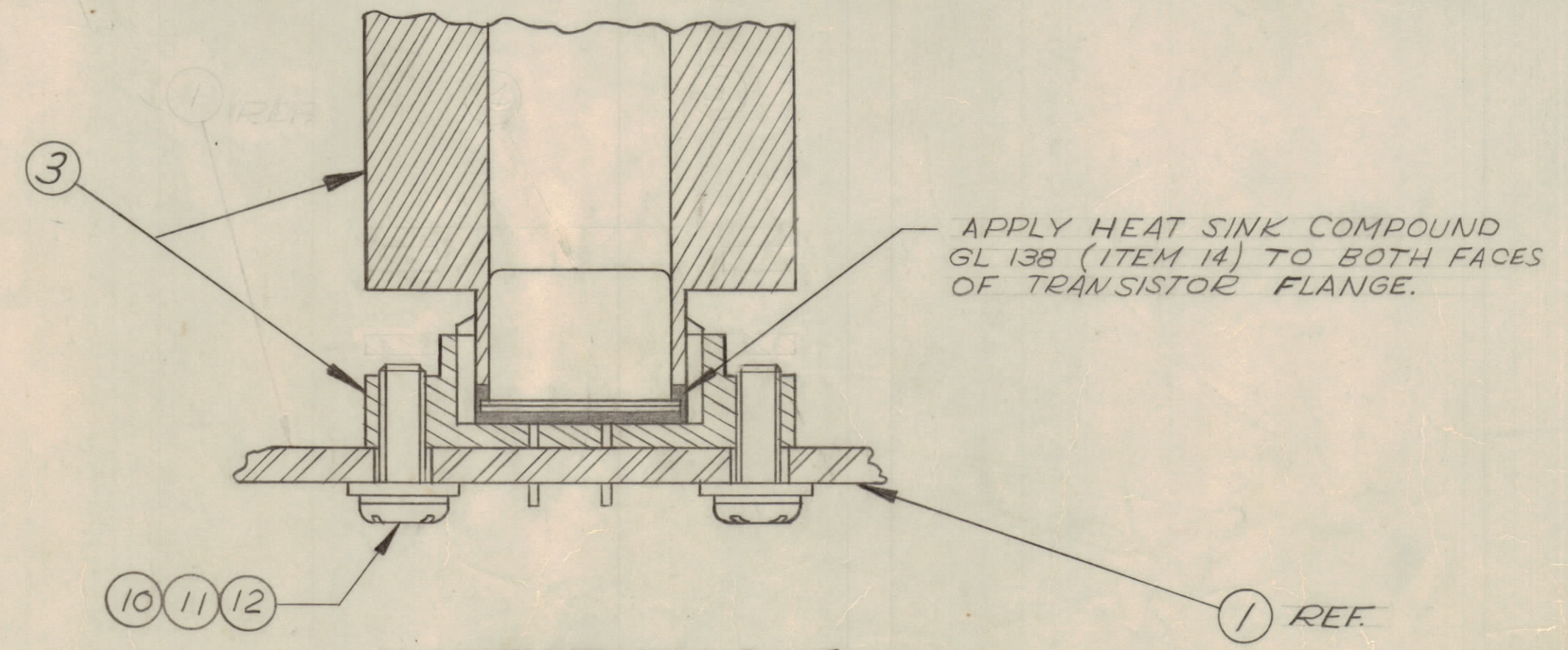
NOTE:-
FOR ELECTRICAL PART NO.'S
REF. TO NUMERICAL PARTS LIST.

TMC PART NO. COMPLETE WITH LATEST REV LETTER
ADD DASH NUMBER

APPLY HEAT SINK
COMPOUND GL 138
(ITEM 14) TO SIDE
FACE OF Q1.



- SCRAP VIEW ON ARROW "B" -



SECTION A-A
TYPICAL ASS'Y FOR Q2 & Q3

TOLERANCES UNLESS OTHERWISE SPECIFIED		SCALE: 4:1
ALL DEC. DIM. ± .05	FRAC. DIM. ± .01	DRILL, PUNCH, COMMERCIAL STOCK SIZES AND MANUFACTURERS TOLERANCES ARE NOT INCLUDED
OTHERS ANGULAR DIM. ± 0° 30'	.XX ± .005	

MODEL	PROJECT NO.	ASS'Y. NO.	DATE
AMC-32	074/69		APR 21/69

STOCK SIZE		TMC (Canada) LIMITED OTTAWA ONTARIO	
MATERIAL		P.C. ASS'Y PRE-AMP INPUT	
TYPE & TEMPER		AP	
DRAWN		ELEC. DES. APP.	MECH. DES. APP.
HEAT TREAT. SPEC.		FINAL APPROVAL	
FINISH & SPEC. NO.		SHT. 7 of 8 A 10757-7 A	