

IF IT IS FOUND DESIRABLE TO CHANGE ANY TOLERANCE OR OTHER DETAIL SPECIFIED ON THIS DRAWING NOTIFY THE PURCHASER PROMPTLY		DIMENSIONS IN INCHES UNLESS OTHERWISE SPECIFIED					
MAXIMUM ALLOWABLE TOLERANCES HAVE BEEN DETERMINED AND DEVIATIONS WILL BE CAUSE FOR REJECTION. REMOVE ALL BURRS AND SHARP EDGES							
ISSUE	ITEM	CHANGED FROM	DATE	CN NO	DRAFTS	CHECKER	ENG APP
Ø		REL TO PROD	MAY 8/69		AP		
A		REVISE PER CEMN	MAR 22/71	907	APP		

A 10757-6 A

REQ	ITEM	PART NO.	DESCRIPTION	SYMBOL
1	1	A 10757-4	P.C. ASS'Y (SUB) PRE-AMP	
1	2	HD 10002-7	HEAT SINK	
2	3	HD 10004	HEAT SINK	
3	4		TRANSISTOR	Q1, Q2, Q3
8	5		RESISTOR FIXED	
1	6		RESISTOR VARIABLE	R6
10	7		CAPACITOR	
1	8		DIODE	CR1
5	9		COIL RF	
4	10	FW02 HBN	WASHER - FLAT	
4	11	LWS 02 MRN	WASHER - LOCK-SPLIT	
4	12	SCBP0256B4	SCREW	
1	13	PX829-1	PAD TRANSISTOR MTG	
AR	14	GL 138	COMPOUND, SILICONE HS.	
1	15		TRANSFORMER	T1
1	16	SC143-0440-BBW	SCREW	
1	17	NT137-0440	NUT	
2	18	FW 101-3	WASHER	

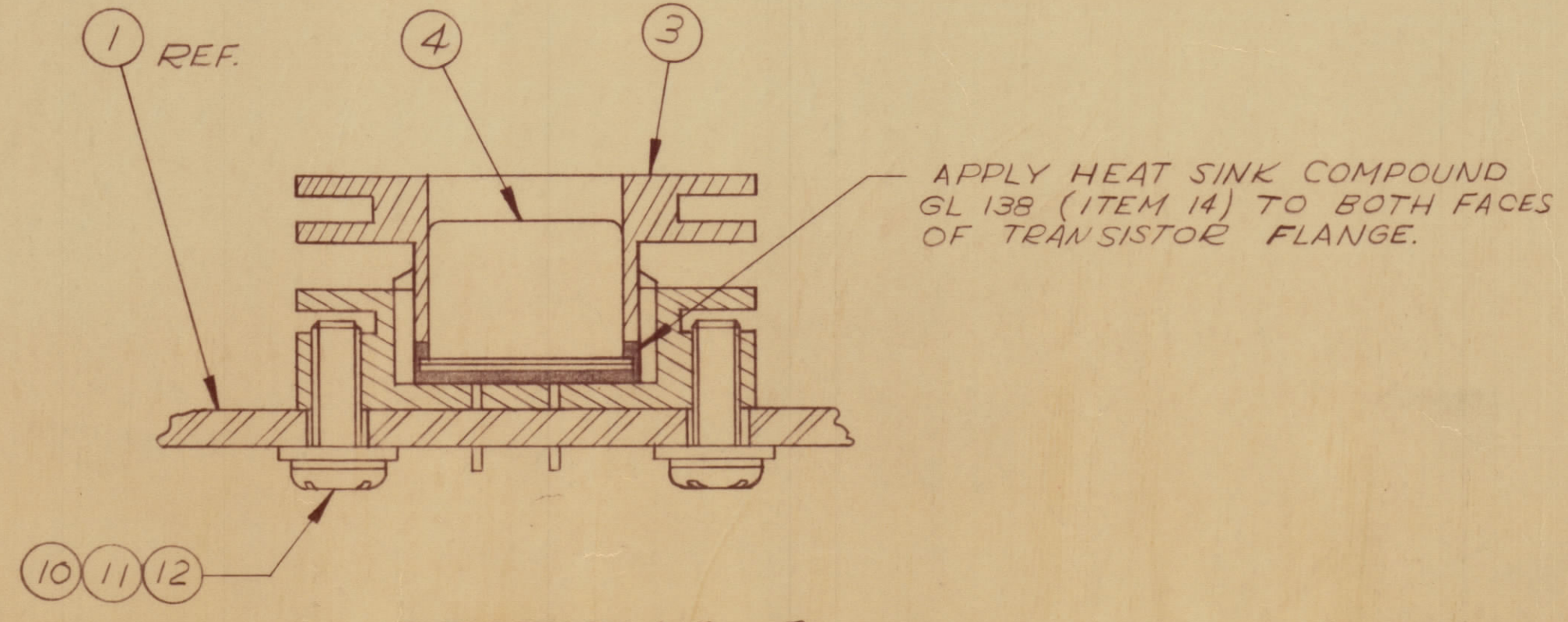
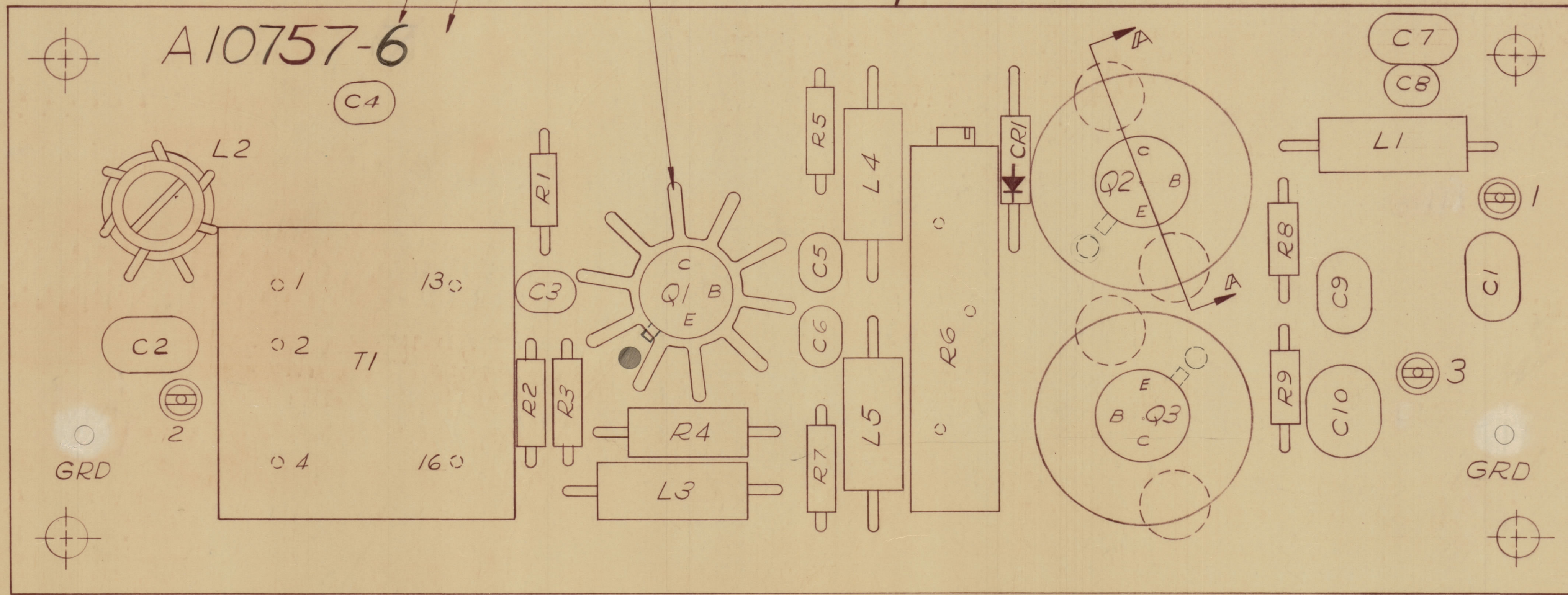
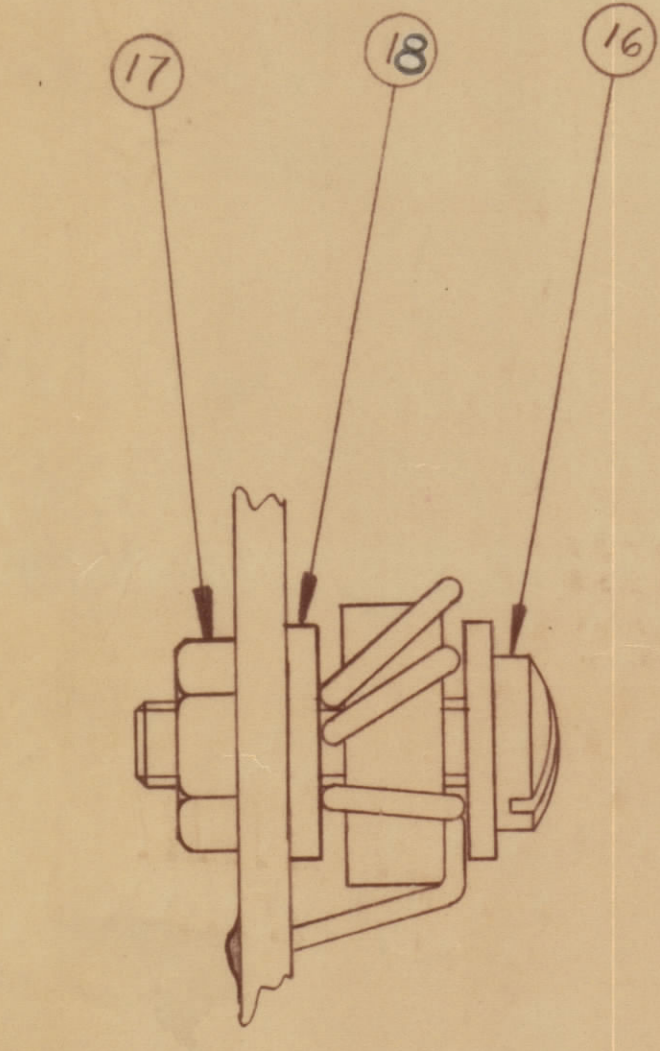
R1, R2, R3, R4, R5, R7, R8, R9, L1, L2, L3, L4, L5

C1, C2, C3, C4, C5, C6, C7, C8, C9, C10

NOTE:-
FOR ELECTRICAL PART NO.'S
REF. TO NUMERICAL PARTS LIST

TMC PART NO. COMPLETE WITH LATEST REV LETTER
ADD DASH NUMBER

APPLY HEAT SINK
COMPOUND GL 138
(ITEM 14) TO SIDE
FACE OF Q1.



TYPICAL ASS'Y FOR Q2 & Q3

TOLERANCES UNLESS OTHERWISE SPECIFIED		SCALE: 4:1
ALL	DEC DIM ± .05	DRILL, PUNCH, COMMERCIAL STOCK
OTHERS	FRAC DIM ± .01	SIZES AND MANUFACTURERS
	ANGULAR DIM ± 0° 30'	TOLERANCES ARE NOT INCLUDED

MODEL	PROJECT NO	ASS'Y NO	DATE
MAC-1	074/69		APR 21/69

STOCK SIZE		TMC (Canada) LIMITED OTTAWA ONTARIO	
MATERIAL		P.C. ASS'Y PRE-AMP INPUT	
TYPE & TEMPER		AP	
HEAT TREAT SPEC		SIMPSON	
FINISH & SPEC NO		skt. 6 of 8	A 10757-6 A