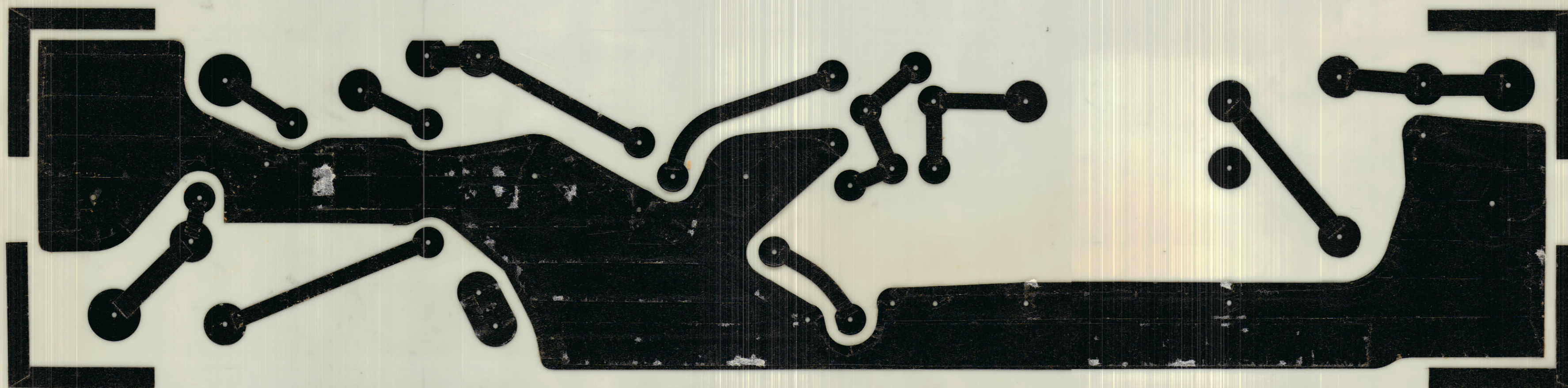


ISSUE	ITEM	CHANGED FROM	DATE	CN. NO.	DRAFTS	CHECKER	ENG. APP.
0		REL TO PROD			AP		KaH

NOTE:

CONDUCTIVE PATTERN TO BE:-
 PLATED WITH A MINIMUM OF .0003 INCH THK.
 OF TIN LEAD.



SCALE 4:1
NEGATIVE 1:1
BOTTOM PATTERN

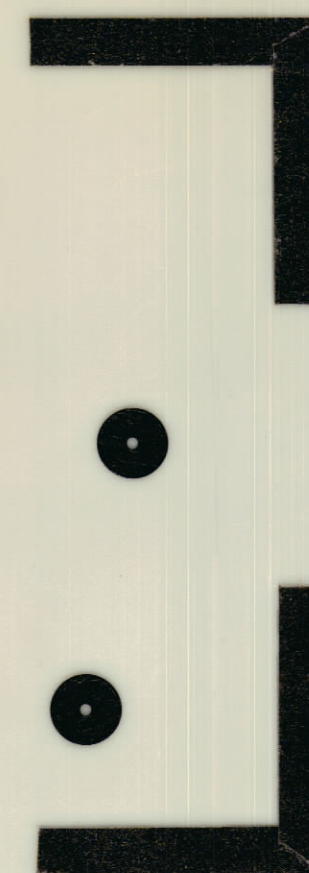
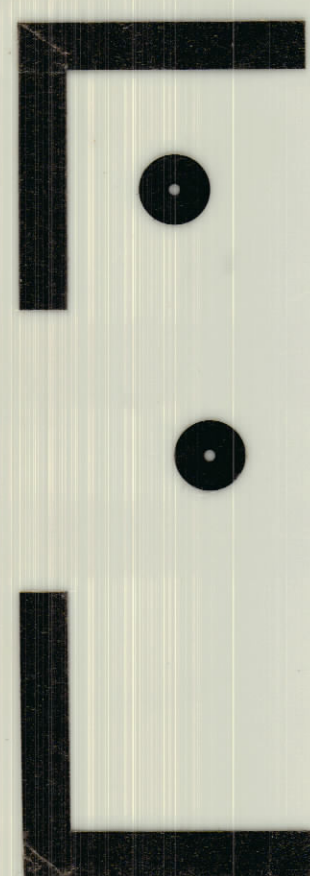
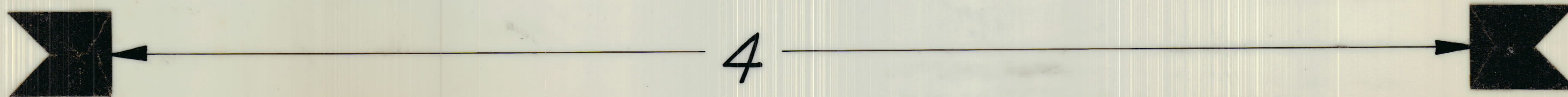
REF. A10751-2 (FOR MACHINING)

AMC 8	074/69		OCT 26/68	TMC (Canada) LIMITED OTTAWA ONTARIO	
MODEL	PROJECT NO.	ASS'Y. NO.	DATE	PRINTED CIRCUIT	
USED ON				ASS'Y PRE-AMP	
MAXIMUM ALLOWABLE TOLERANCES HAVE BEEN DETERMINED AND DEVIATIONS WILL BE CAUSE FOR REJECTION. REMOVE ALL BURRS AND SHARP EDGES. IF IT IS FOUND DESIRABLE TO CHANGE ANY TOLERANCE OR OTHER DETAIL SPECIFIED ON THIS DRAWING NOTIFY THE PURCHASER PROMPTLY.				MATERIAL	WEIGHT PER PC.
				TYPE & TEMPER	
TOLERANCES				DRAWN AP KaH	
SCALE 4:1				ELEC. DES. APP. MECH. DES. APP.	
DIMENSIONS IN INCHES UNLESS OTHERWISE SPECIFIED DRILL, PUNCH, COMMERCIAL STOCK SIZES AND MANUFACTURERS TOLERANCES ARE NOT INCLUDED.				CHECKED	
ALL OTHERS	DEC. DIM. ±	FRAC. DIM. ±	ANGULAR DIM. ±	FINAL APPROVAL	
FINISH & SPEC. NO.				SHEET 1 of 6 A10751-1 0	

ISSUE	ITEM	CHANGED FROM	DATE	CH. NO.	DRAFTS	CHECKER	ENG. APP.
0		REL TO PROD	DEC 1/68		AP		Kjt

NOTE :-

CONDUCTIVE PATTERN TO BE :-
 PLATED WITH A MINIMUM OF .0003 INCH THK.
 OF TIN LEAD.



SCALE 4:1
NEGATIVE 1:1

COMPONENT SIDE

REF. A10735-2 (FOR MACHINING)

A.M.C.-8		074/69		OCT 26/68		TMC (Canada) LIMITED OTTAWA ONTARIO	
MODEL	PROJECT NO.	ASSY. NO.	DATE	STOCK SIZE		PRINTED CIRCUIT	
MAXIMUM ALLOWABLE TOLERANCES HAVE BEEN DETERMINED AND DEVIATIONS WILL BE CAUSE FOR REJECTION. REMOVE ALL BURRS AND SHARP EDGES				IF IT IS FOUND DESIRABLE TO CHANGE ANY TOLERANCE OR OTHER DETAIL SPECIFIED ON THIS DRAWING NOTIFY THE PURCHASER PROMPTLY.		ASSY PRE-AMP	
TOLERANCES				SCALE 4:1		AP Kjt	
ALL OTHERS	DEC. DIM. ±	DIMENSIONS IN INCHES UNLESS OTHERWISE SPECIFIED		MATERIAL		DRAWN ELEC. DES. APP. MECH. DES. APP.	
	FRAC. DIM. ±	DRILL, PUNCH, COMMERCIAL STOCK SIZES AND MANUFACTURERS TOLERANCES ARE NOT INCLUDED.		TYPE & TEMPER		CHECKED FINAL APPROVAL	
	ANGULAR DIM. ±			HEAT TREAT. SPEC.		SHEET 2 of 6 A10751-1	
				FINISH & SPEC. NO.		φ	

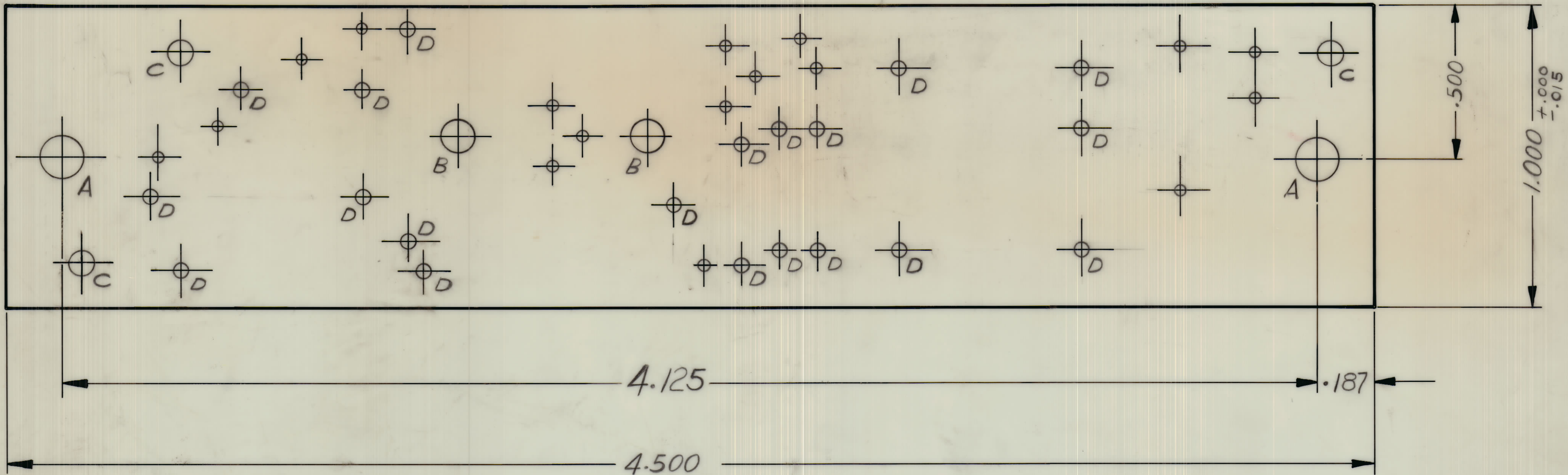
ISSUE	ITEM	CHANGED FROM	DATE	CH. NO.	DRAFTS	CHECKER	ENG. APP.
Ø		REL TO PROD	DEC 11/68		AP		

HOLE LEGDEND :-

HOLE	DESCRIPTION	REQ'D
A	9/64 DIA.	2
B	7/64 DIA.	2
C	.081 DIA.	3
D	.046 DIA.	20
UNMARKED	.035 DIA.	4

MATERIAL :-

PLASTIC SHEET, LAMINATED, COPPER CLAD.
FL-GE 062 -C- 2/2



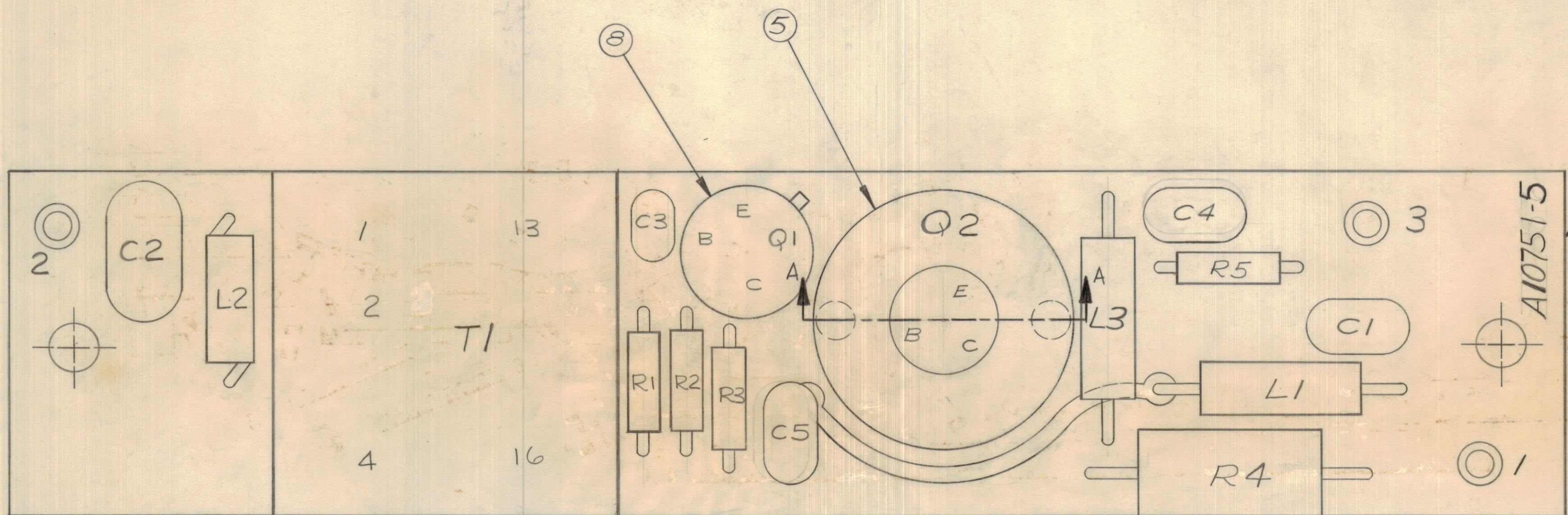
SCALE 4:1
BOTTOM PATTERN

AMC-8	074/69		OCT 26/68	TMC (Canada) LIMITED OTTAWA ONTARIO	
MODEL	PROJECT NO.	ASS'Y. NO.	DATE	STOCK SIZE	PRINTED CIRCUIT
USED ON				SEE NOTE	ASS'Y PRE-AMP
MAXIMUM ALLOWABLE TOLERANCES HAVE BEEN DETERMINED AND DEVIATIONS WILL BE CAUSE FOR REJECTION. REMOVE ALL BURRS AND SHARP EDGES				MATERIAL	AP
IF IT IS FOUND DESIRABLE TO CHANGE ANY TOLERANCE OR OTHER DETAIL SPECIFIED ON THIS DRAWING NOTIFY THE PURCHASER PROMPTLY.				WEIGHT PER PC.	
TOLERANCES				TYPE & TEMPER	DRAWN
SCALE 4:1				HEAT TREAT. SPEC.	ELEC. DES. APP.
ALL OTHERS	DEC. DIM. ± UNLESS OTHERWISE SPECIFIED	DIMENSIONS IN INCHES UNLESS OTHERWISE SPECIFIED		FINISH & SPEC. NO.	MECH. DES. APP.
	FRAC. DIM. ± SPECIFIED	DRILL PUNCH, COMMERCIAL STOCK SIZES AND MANUFACTURERS TOLERANCES ARE NOT INCLUDED.		CHECKED	FINAL APPROVAL
	ANGULAR DIM. ± ± .015				
				SHEET 3 of 6 A 10751-2 Ø	

IF IT IS FOUND DESIRABLE TO CHANGE ANY TOLERANCE OR OTHER DETAIL SPECIFIED ON THIS DRAWING NOTIFY THE PURCHASER PROMPTLY.				DIMENSIONS IN INCHES UNLESS OTHERWISE SPECIFIED			
MAXIMUM ALLOWABLE TOLERANCES HAVE BEEN DETERMINED AND DEVIATIONS WILL BE CAUSE FOR REJECTION. REMOVE ALL BURRS AND SHARP EDGES.							
ISSUE	ITEM	CHANGED FROM	DATE	CN. NO.	DRAFTS	CHECKER	ENG. APP.
Ø		REL TO PROD	DEC 1/68		AP		KLV

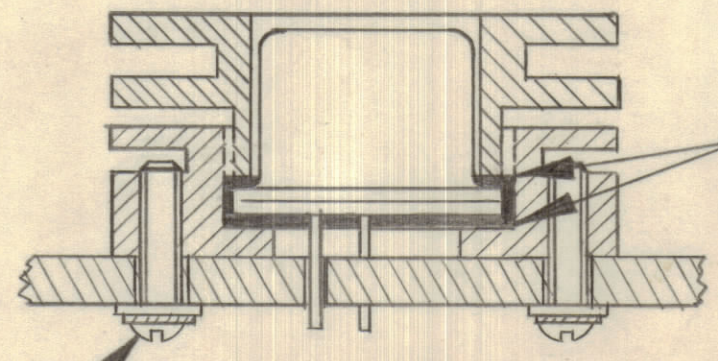
REQ.	ITEM	PART NO.	DESCRIPTION	SYMBOL
1	1	A10735-4	PRINTED CIRC. ASS'Y (SUB)	
5	2		CAPACITOR, FIXED	
3	3		COIL, FIXED, RF,	
5	4		RESISTOR, FIXED	
1	5	HD 10004	HEAT SINK	
1	6		TRANSFORMER RF,	T1
2	7		TRANSISTOR	Q1Q2
1	8	PX 829-3	PAD, MOUNTING TRANSISTOR	
2	9	LWE 02MSS	LOCK WASHER EXTERNAL	
2	10	FW02HSS	WASHER FLAT	
2	11	SCPP0256SS4	SCREW MACHINE	
AR	12	GL 138	COMPOUND, SILICONE HEAT SINK	
AR	13	BS 100	SOLDER SOFT	

C1, C2, C3, C4, C5
L1, L2, L3
R1, R2, R3, R4, R5



ADD LATEST REV. LETTER.

A10751-5 Ø



APPLY HEAT SINK COMPOUND GL 138 (ITEM 12) TO BOTH FACES OF THE TRANSISTOR FLANGE.

SECTION A-A

TOLERANCES		SCALE:
ALL OTHERS	DEC. DIM. ± 1/64 FRAC. DIM. ± 1/64 ANGULAR DIM. ± 0° 30'	.X = .05 .XX = .01 .XXX = .005
DRILL, PUNCH, COMMERCIAL STOCK SIZES AND MANUFACTURERS TOLERANCES ARE NOT INCLUDED.		

AMC 8	074 / 69	OCT 28/68
MODEL	PROJECT NO.	DATE

STOCK SIZE		TMC (Canada) LIMITED OTTAWA ONTARIO	
MATERIAL		PRINTED CIRCUIT ASS'Y PRE AMP	
TYPE & TEMPER		AP	KLV
HEAT TREAT. SPEC.		DRAWN	ELEC. DES. APP. MECH. DES. APP.
FINISH & SPEC. NO.		CHECKED	FINAL APPROVAL
Sht 6 of 6 A10751-5 Ø			