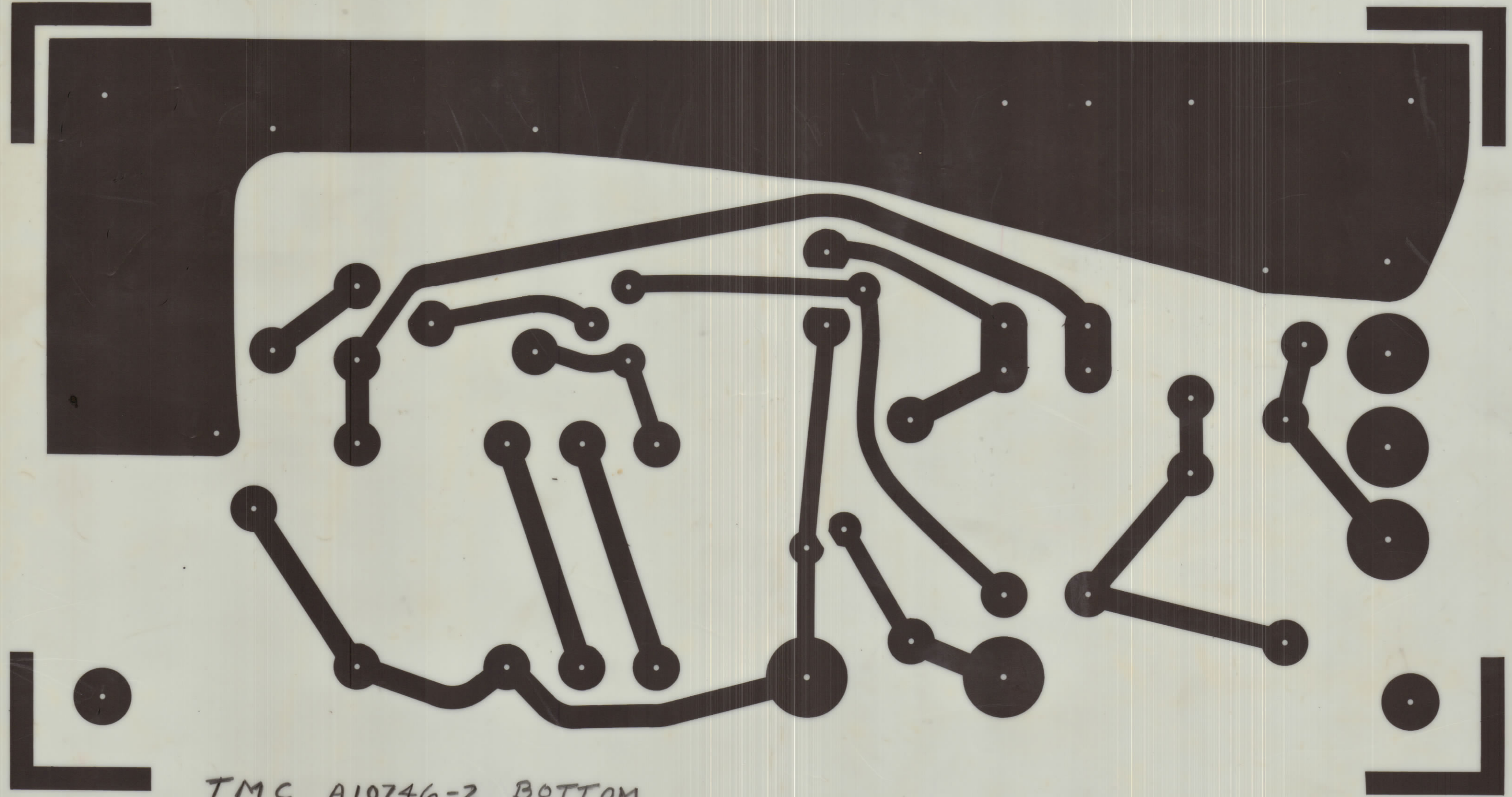
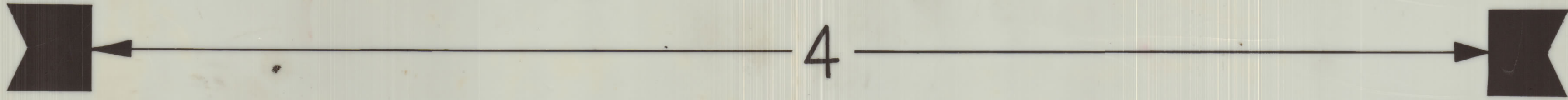


ISSUE	ITEM	CHANGED FROM	DATE	CN. NO.	DRAFTS	CHECKER	ENG. APP.
Ø		REL TO PROD	DEC 1/68		AP	KS	KNT
A		REVISE PER CEMN	MAR 30/71	938	AP		OFF



TMC A10746-2 BOTTOM

SCALE 4:1
 NEGATIVE 1:1
 BOTTOM PATTERN

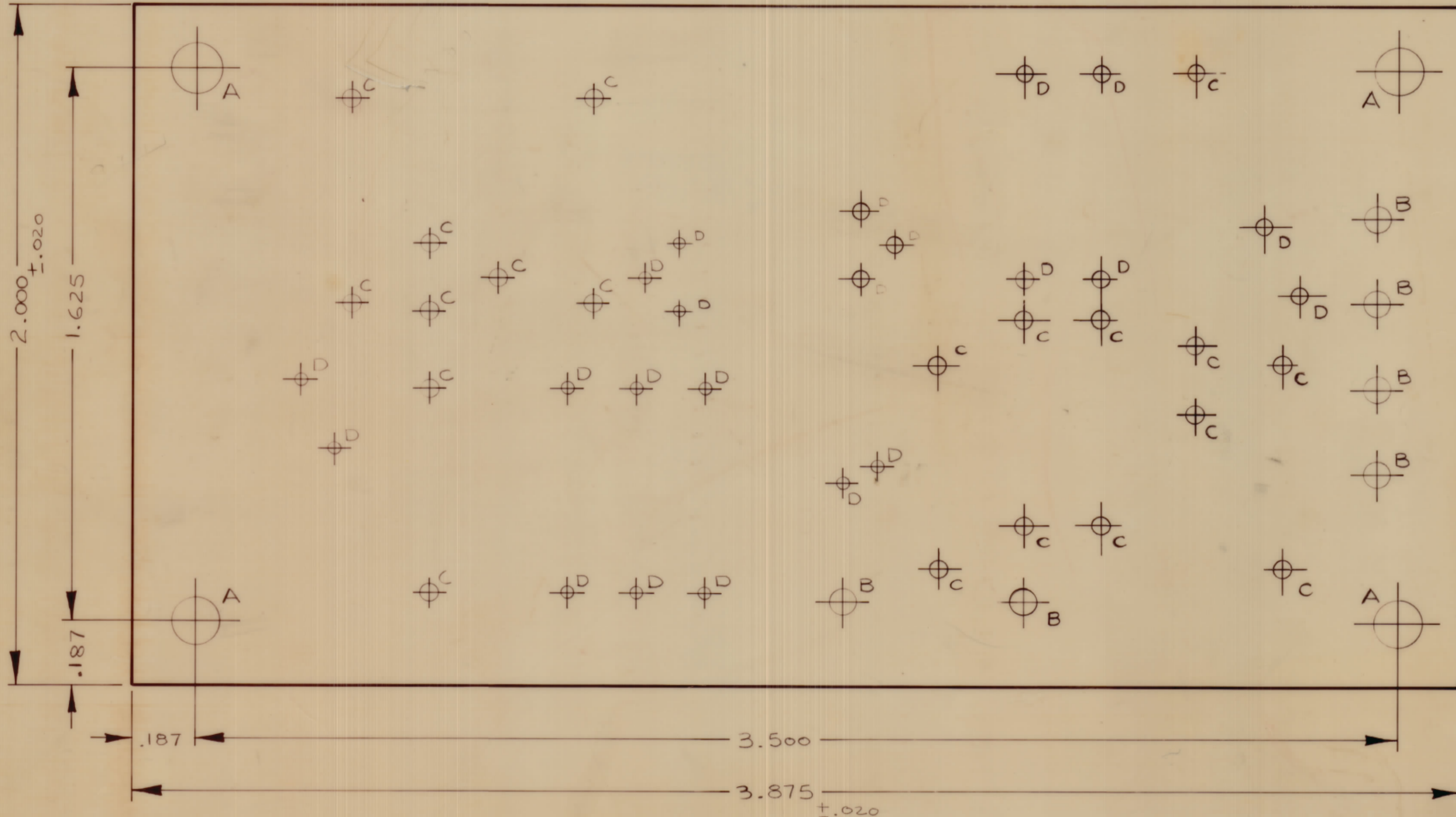
AMC 32	074/69		1 DEC 68	TMC (Canada) LIMITED OTTAWA ONTARIO PRINTED CIRCUIT ASSY REGULATOR	
AMC 8	074/69		OCT 23/69		
MODEL	PROJECT NO.	ASSY. NO.	DATE	STOCK SIZE	
USED ON				MATERIAL	WEIGHT PER PC.
MAXIMUM ALLOWABLE TOLERANCES HAVE BEEN DETERMINED AND DEVIATIONS WILL BE CAUSE FOR REJECTION. REMOVE ALL BURRS AND SHARP EDGES		IF IT IS FOUND DESIRABLE TO CHANGE ANY TOLERANCE OR OTHER DETAIL SPECIFIED ON THIS DRAWING NOTIFY THE PURCHASER PROMPTLY.		TYPE & TEMPER	
TOLERANCES		SCALE 4/1		HEAT TREAT. SPEC.	
ALL OTHERS	DEC. DIM. ±	DIMENSIONS IN INCHES UNLESS OTHERWISE SPECIFIED		FINISH & SPEC. NO.	
	FRAC. DIM. ±	DRILL, PUNCH, COMMERCIAL STOCK SIZES AND MANUFACTURERS TOLERANCES ARE NOT INCLUDED.		DRAWN: AP CHECKED: SIMPSON ELEC. DES. APP. [Signature] MECH. DES. APP. [Signature] FINAL APPROVAL [Signature]	
	ANGULAR DIM. ±			SHEET 1 OF 7 A10746-1 A	

ISSUE	ITEM	CHANGED FROM	DATE	LN. NO	DRAFTS	CHECKER	ENG. REV
Ø		REL TO PROD	DEC 11/68		AP		W
A		REVISED PER CEMN	MAR 30/71	938	AP		

NOTES:

- (1) PLASTIC SHEET, LAMINATED, COPPER CLAD, FL-GE 062-C-2/0 PER MIL-P-13949
- (2) PLATED WITH A MINIMUM OF .0003 INCH OF TIN LEAD
- (3) THIS BOARD SHALL MEET THE REQUIREMENTS OF TMC SPEC 735

SCALE 4:1
BOTTOM PATTERN

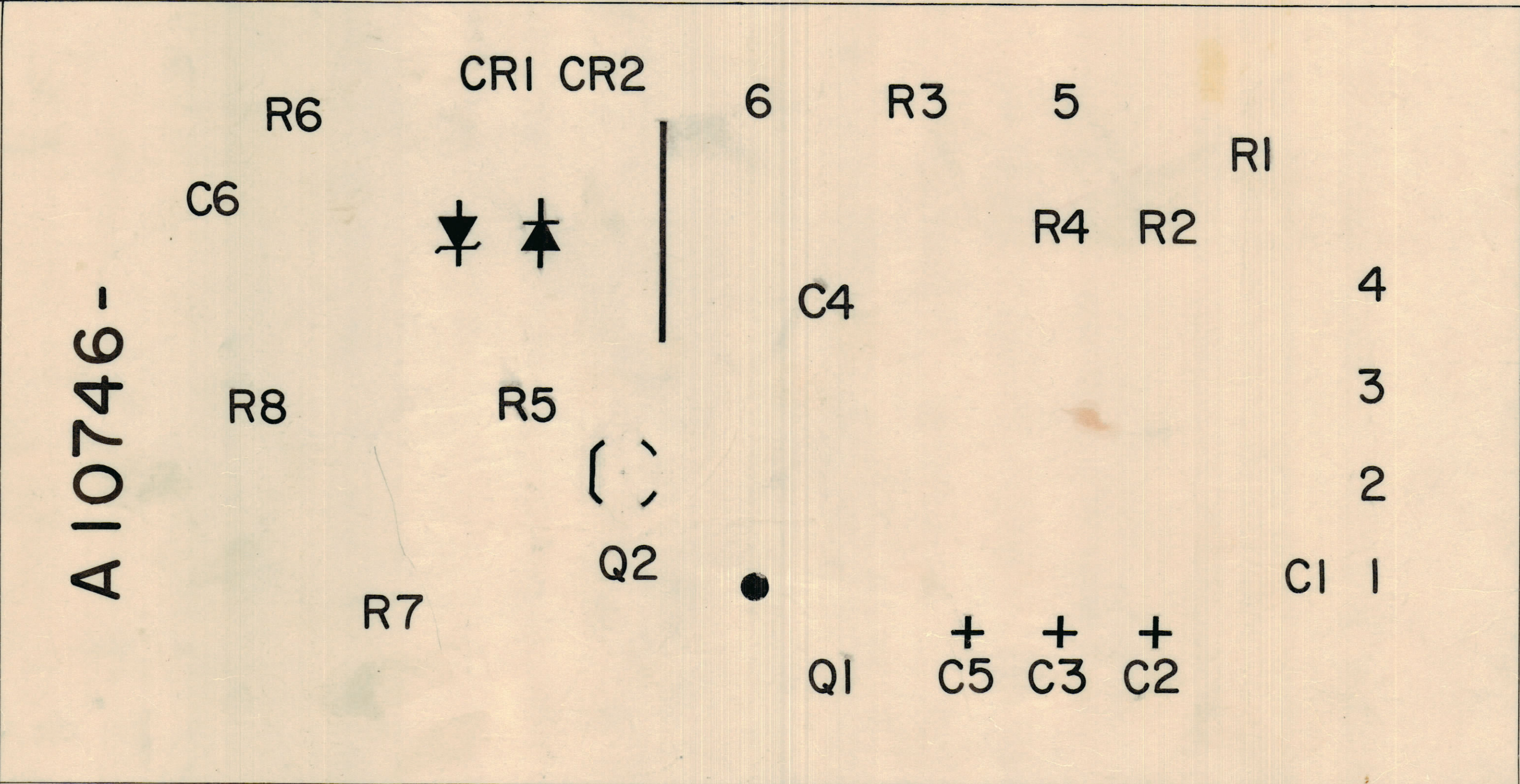


HOLE	DESCRIPTION	REQ'D
A	.140 DIA.	4
B	.116 DIA.	6
C	.052 DIA.	20
D	.035 DIA.	22

MODEL	PROJECT NO.	ASSY. NO.	DATE	STOCK SIZE	TMC (Canada) LIMITED OTTAWA ONTARIO	
AMC 32	074/69		1 DEC 68		H.C. BD. ASSY. REGULATOR	
AMC 8	074/69		OCT 18/68	SEE NOTE	(MACHINING)	
MAXIMUM ALLOWABLE TOLERANCES HAVE BEEN DETERMINED AND DEVIATIONS WILL BE CAUSE FOR REJECTION REMOVE ALL BIRRS AND SHARP EDGES				IF IT IS FOUND DESIRABLE TO CHANGE ANY TOLERANCE OR OTHER DETAIL SPECIFIED ON THIS DRAWING NOTIFY THE PURCHASER PROMPTLY.		
TOLERANCES				SCALE 4:1	RPL	
ALL OTHERS	DEC DIM ± .015	DIMENSIONS IN INCHES UNLESS OTHERWISE SPECIFIED		TYPE & TEMPER	DRAWN	
	FRAC DIM ±	DRILL PUNCH COMMERCIAL STOCK SIZES AND MANUFACTURERS TOLERANCES ARE NOT INCLUDED		HEAT TREAT SPEC	ELEC DES APP	
	ANGULAR DIM ±			FINISH & SPEC. NO.	MEM DES APP	
					CHECKED	
					FINAL APPROVAL	
					SHEET 2 of 7 A10746-2 A	

IF IT IS FOUND DESIRABLE TO CHANGE ANY TOLERANCE OR OTHER DETAIL SPECIFIED ON THIS DRAWING NOTIFY THE PURCHASER PROMPTLY.		DIMENSIONS IN INCHES UNLESS OTHERWISE SPECIFIED					
MAXIMUM ALLOWABLE TOLERANCES HAVE BEEN DETERMINED AND DEVIATIONS WILL BE CAUSE FOR REJECTION. REMOVE ALL BURRS AND SHARP EDGES.							
ISSUE	ITEM	CHANGED FROM	DATE	CN. NO.	DRAFTS	CHECKER	ENG. APP.
φ		RELEASED TO PRODU	4/2/68			JB	
A		REVISE PER CEMN	MAR 30/71	938	AP		

REQ.	ITEM	PART NO.	DESCRIPTION	SYMB.
------	------	----------	-------------	-------



A 10746-2 TMC

SCALE - 4:1
 NEGATIVE - 1:1
 REF. TOP PATTERN

- LETTERING NOTES -
1. WHITE EPOXY PAINT
 2. HEIGHT OF LETTERS - $.093 \pm .005$
 3. WIDTH OF LINES - $.015 \pm .005$
 4. MARKING TO MEET THE REQUIREMENTS OF TMC SPEC 727
 5. DOT TO BE 1/16 DIA.
 6. HEIGHT OF CHARACTERS FOR BOARD NUMBERS - $.125 \pm .015$
 7. WIDTH OF LINES BOARD NUMBERS - $.020 \pm .005$

REJAN 3 1971

TOLERANCES		SCALE
ALL OTHERS	DEC. DIM. $\pm .X$.05 FRAC. DIM. $\pm \frac{1}{64}$.XX .01 ANGULAR DIM. $\pm 0^{\circ} 30'$.XXX .005	DRILL, PUNCH, COMMERCIAL STOCK SIZES AND MANUFACTURERS TOLERANCES ARE NOT INCLUDED.

MODEL	PROJECT NO.	ASSY. NO.	DATE
AMCB	074/69		4 DEC 1968

STOCK SIZE		TMC (Canada) LIMITED OTTAWA ONTARIO	
MATERIAL		ASSEMBLY PRINTED CIRCUIT BOARD - REGULATOR	
TYPE & TEMPER		BARTLETT	
DRAWN		ELEC. DES. APP. MECH. DES. APP.	
HEAT TREAT. SPEC.		CHECKED FINAL APPROVAL	
FINISH & SPEC. NO.		SHEET 3 OF 7 A10746-3 A	

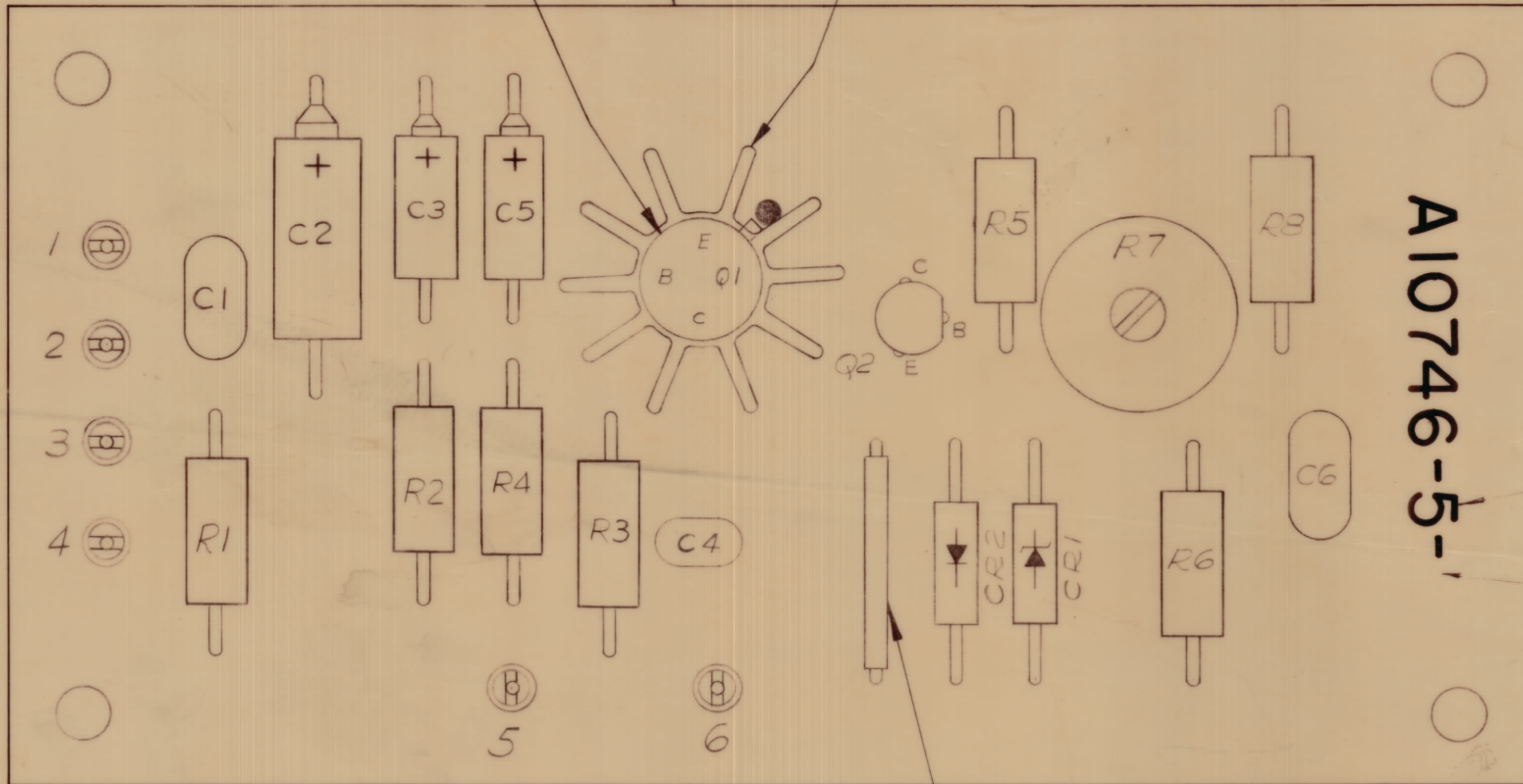
IF IT IS FOUND DESIRABLE TO CHANGE ANY TOLERANCE OR OTHER DETAIL SPECIFIED ON THIS DRAWING NOTIFY THE PURCHASER PROMPTLY.		DIMENSIONS IN INCHES UNLESS OTHERWISE SPECIFIED					
MAXIMUM ALLOWABLE TOLERANCES HAVE BEEN DETERMINED AND DEVIATIONS WILL BE CAUSE FOR REJECTION REMOVE ALL BURRS AND SHARP EDGES							
ISSUE	ITEM	CHANGED FROM	DATE	CH. NO.	DRAFTS	CHECKER	ENG. APP.
Ø		REL TO PROD	DEC 1/68		AP	AP	KLN
A		REVISE PER CEMN	MAR 30/71	938	AP		WTP

REQ	ITEM	PART NO.	DESCRIPTION	SYMBOL
1	1	A10746-4	PC. BD. SUB ASS'Y REGULATOR	
1	2	HD10002-7	HEAT SINK	
6	3		CAPACITOR FIXED	
7	4		RESISTOR FIXED	
1	5		RESISTOR VARIABLE	R7
2	6		TRANSISTOR	Q1, Q2
2	7		DIODE	CR1, CR2
AR	8	BS 100	SOFT SOLDER	
1	9	PX 829-1	PAD TRANSISTOR MTG	
AR	10	PX 104-2-034	SLEEVING	
AR	11	WL 100-7	BUSS WIRE	
AR	12	GL 138	COMPOUND SILICONE HEAT SINK	

C1, C2, C3, C4, C5, C6
R1, R2, R3, R4, R5, R6, R8

APPLY HEAT SINK COMPOUND GL 138 (ITEM 12) TO SIDE FACE OF Q1.

NOTE:-
FOR ELECTRICAL COMPONENT PART NOS REFER TO MATERIAL PARTS LIST



ADD LATEST REV LETTER — ADD PART NO SUFFIX

A10746-5 A

A10746-5-

TOLERANCES		SCALE 4:1
ALL OTHERS	DEC DIM ± .01 FRAC DIM ± 1/64 ANGULAR DIM ± 0° 30'	DRILL, PUNCH, COMMERCIAL STOCK SIZES AND MANUFACTURERS TOLERANCES ARE NOT INCLUDED.

AMC LMC 50275-D	PROJECT NO.	AX10073	DATE	OCT 23/68
MODEL	ASS Y. NO.	USED ON		

STOCK SIZE		TMC (Canada) LIMITED OTTAWA ONTARIO	
MATERIAL		ASSEMBLY PRINTED	
WEIGHT PER PC		CIRCUIT BD. REGULATOR	
TYPE & TEMPER		AP	KLN
DRAWN		ELEC DES APP	MECH DES APP
HEAT TREAT SPEC.		WTP	
FINISH & SPEC. NO.		SHEET 5 OF A10746-5 A	