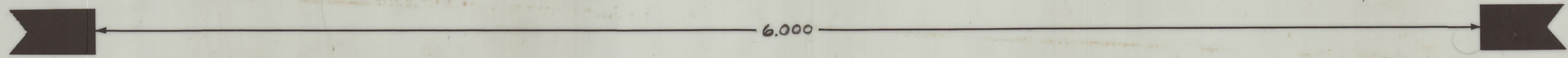


IF IT IS FOUND DESIRABLE TO CHANGE ANY TOLERANCE OR OTHER DETAIL SPECIFIED ON THIS DRAWING NOTIFY THE PURCHASER PROMPTLY.		DIMENSIONS IN INCHES UNLESS OTHERWISE SPECIFIED.					
MAXIMUM ALLOWABLE TOLERANCES HAVE BEEN DETERMINED AND DEVIATIONS WILL BE CAUSE FOR REJECTION REMOVE ALL BURRS AND SHARP EDGES							
ISSUE	ITEM	CHANGED FROM	DATE	CH NO	DRAFTER	CHECKER	ENG APP
0		RELEASED TO PROD	27 JAN 69		ES		
A		REV AS PER CEMN	11 MAR 69	456	AP		W
B		REV AS PER CEMN	20 APR 69	473	E		W
C		REV AS PER CEMN	11 FEB 72	721	SPR		W
D		REV AS PER CEMN	MAR 24/70	742	SPR		W

ISSUE	ITEM	CHANGED FROM	DATE	CH NO	DRAFTER	CHECKER	ENG APP
E		SEE SHEET 2	17 MAR 72	1165	CC	LB	JW
F		REV PER CEMN	13 JUNE 73	1239	AMM	SOW	SOW
G		L6 Added Area Revised	6/23/81	21886	XXX		SB
H		SHE B RED. W/CHANGES	8/27/92		ESL		



A 10735-1 TMC BOTTOM

BOTTOM PATTERN
 SCALE 4:1
 NEGATIVE 1:1

REF A10735-2 FOR MACHINING

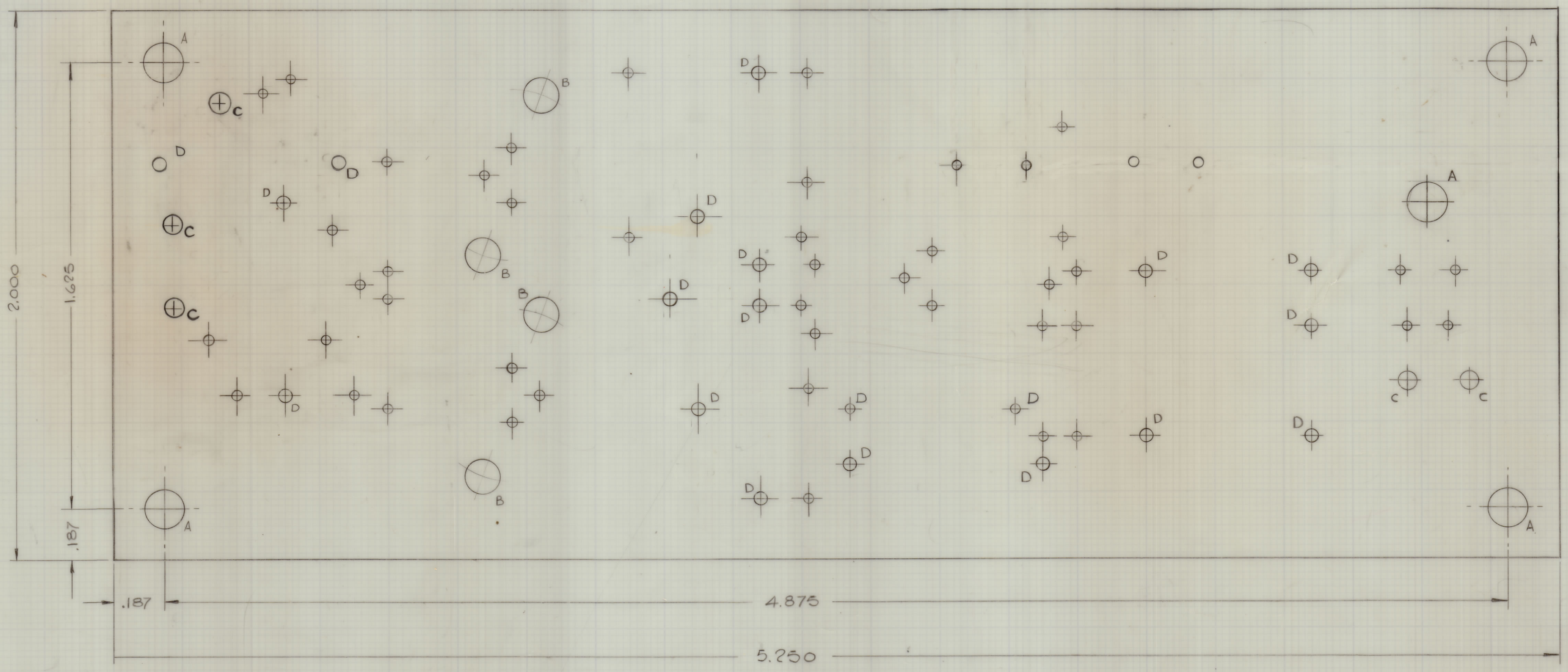
TOLERANCES		SCALE 4:1
ALL DIM 1	.XX - .05	DIMENSIONS IN INCHES UNLESS OTHERWISE SPECIFIED DIRECT PURCH. COMMERCIAL STOCK SIZES AND MANUFACTURERS TOLERANCES ARE NOT INCLUDED
FRAC DIM 1/16	.XX - .01	
ANGULAR DIM 1/2° 30'	.XX - .005	

MODEL	PROJECT NO	DATE
AMC-B	074169	17 JAN 69

TMC (Canada) LIMITED OTTAWA ONTARIO	
PRINTED CIRCUIT ASSY	
PRE-AMPLIFIER	
DRAWN	ELEC DES APP
MECH DES APP	
CHECKED	FINAL APPROVAL
SHT 1 OF 8	A10735-1 H

ISSUE	REV	CHANGED FROM	DATE	CH. NO.	DRAWN	CHECKER	ENR. APP.
Ø		RELEASED TO PROD	29 JAN 69		B		
A		REVISED AS PER CEMN	10 MAR 69	456	B		
B		REV AS PER CEMN	28 APR 69	473	B		
C		REV AS PER CEMN	7 FEB 71	721	BSP		
D		REV AS PER CEMN	MAR 72	742	BSP		
E		REV AS PER CEMN	MAR 72	1165	CC	4B	JYY
F		REV AS PER CEMN	15 JAN 72	1239	JMM	SOW	JAN
G		(3) C Holes Relocated	6/29/79	21886			
H		SH B RED. W/CHANGE	8.22.90		C.D.L.		

HOLE	DESCRIPTION	QTY
A	.140 DIA	5
B	.125 DIA	4
C	.063 ±.003 DIA	5
D	.046 DIA	18
UNMARKED	.035 DIA	~



BOTTOM PATTERN

3. FINISH: CONDUCTIVE PATTERN TO BE PLATED WITH A MINIMUM OF .0003 THK TIN/LEAD
2. MATERIAL: PLASTIC SHEET LAMINATED COPPER CLAD FL-GE 062-C-2/0
1. THIS BOARD MUST MEET THE REQUIREMENTS OF T.M.C SPECIFICATION 735

REFERENCE
PRINTED CIRCUIT SUB-ASSEMBLY A10735-4 (SIZE A)
TERMINAL MOUNTING

NOTES

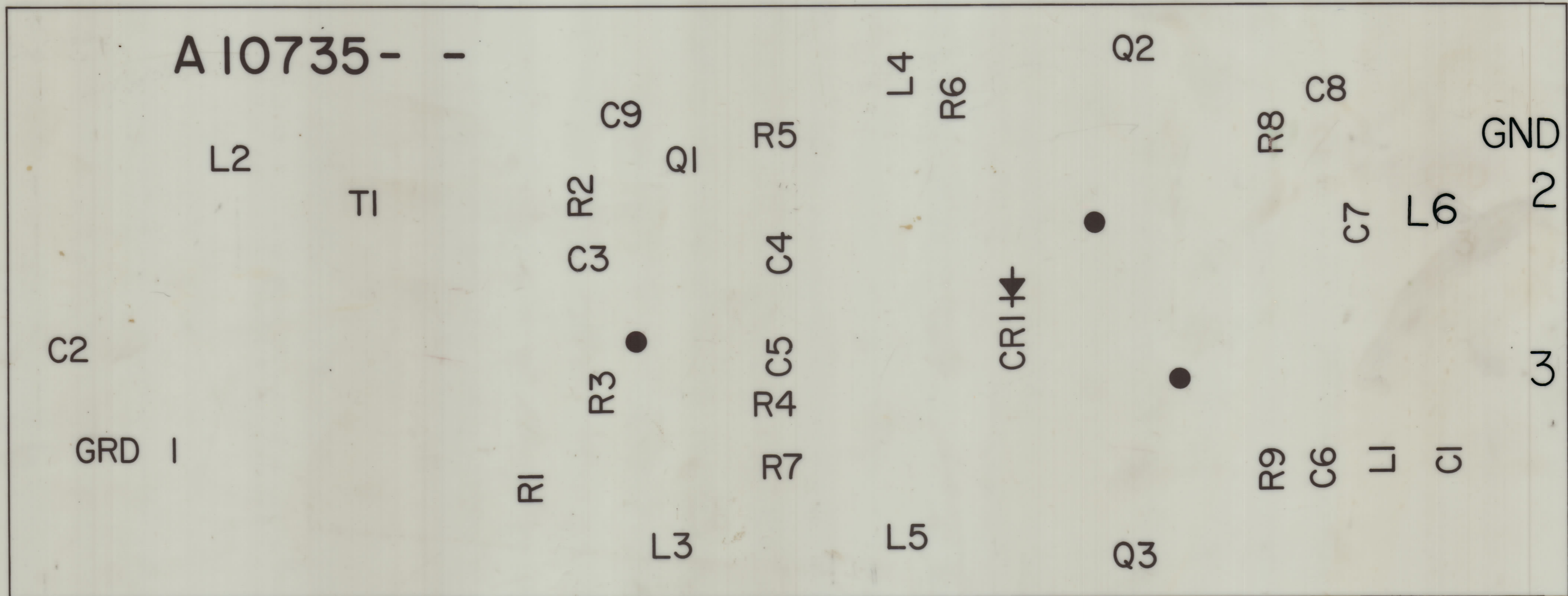
TOLERANCES UNLESS OTHERWISE SPECIFIED	SCALE 4:1
ALL DIM .015	DRILL FINISH COMMERCIAL STOCK
FEEL DIM .04	RISE AND MANUFACTURERS
ANGULAR DIM 1:0000	TOLERANCES ARE NOT INCLUDED

MODEL	PROJECT NO.	DATE
AMC 8	074/69	17 JAN 1969

TMC (Canada) LIMITED OTTAWA ONTARIO	
SEE NOTE 2	PRINTED CIRCUIT ASSY
SEE NOTE 2	PRE-AMPLIFIER
DESIGNED	CHECKED
DATE	DATE
17 JAN 1969	
FINISH & SPEC. NO.	FINAL APPROVAL
SEE NOTE 3	SHIT 2 of 8 A10735-2 H

IF IT IS FOUND DESIRABLE TO CHANGE ANY TOLERANCE OR OTHER DETAIL SPECIFIED ON THIS DRAWING NOTIFY THE PURCHASER PROMPTLY.							DIMENSIONS IN INCHES UNLESS OTHERWISE SPECIFIED					
ISSUE	ITEM	CHANGED FROM	DATE	CN. NO.	DRAFTS	CHECKER	ENG. APP.	REV.	ITEM	PART NO.	DESCRIPTION	SYMBOL
Ø		REL TO PROD	JAN 30/69		AP	AS						
A		REV AS PER CEMN	MAR 11/69	456	AP							
B		REV AS PER CEMN	28 APR 69	473								
C		REV AS PER CEMN	17 FEB 72	721								
D		REV AS PER CEMN	MAR 18/70	742								
E		SEE SHEET 2										
F		REV PER CEMN	12 JUN 72	1239								
G		L6 Added Area Revised	6/23/81	21886								
H		SHEET 3 REDRAW WORKS	8.23.70									

A10735-3 H



SCALE 4:1
NEGATIVE 1:1
REF. TOP PATTERN

- LETTERING NOTES :-
- 1) WHITE EPOXY PAINT
 - 2) HEIGHT OF CHARACTERS .093 + .015 - .000
 - 3) WIDTH OF LINES .015 + .010 - .000
 - 4) AS PER TMC SPEC. S727
 - 5) DOT 1/16 DIA.
 - 6) HEIGHT OF BOARD N^o. CHARACTERS .125 + .015 - .000
 - 7) LINE WIDTH OF BOARD N^o. CHARACTERS .020 + .010 - .005

TOLERANCES UNLESS OTHERWISE SPECIFIED		SCALE: 4:1
ALL DEC DIM ± .X ± .05	DRILL FUNCH. COMMERCIAL STOCK	
OTHERS FRACTIONAL DIM ± .XX ± .01	SIZES AND MANUFACTURERS	
ANGULAR DIM ± 0° 30' .XXX ± .005	TOLERANCES ARE NOT INCLUDED	

MODEL	PROJECT NO.	ASSY. NO.	DATE
AMCB #32	074169		JAN 30/69

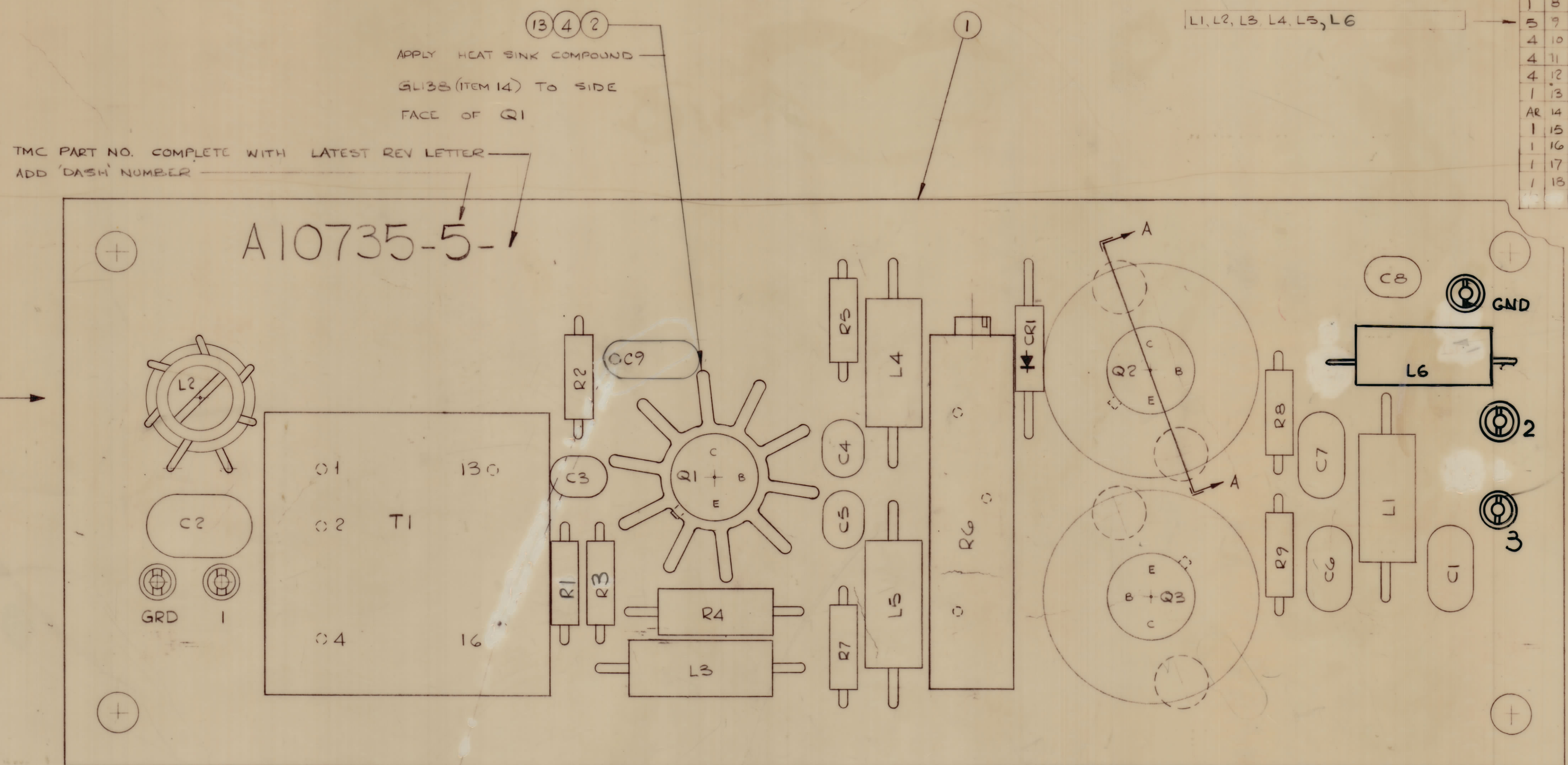
STOCK SIZE		TMC (Canada) LIMITED OTTAWA ONTARIO	
MATERIAL		PRINTED CIRCUIT ASS'Y	
WEIGHT PER PC		PRE-AMPLIFIER (LETT.)	
TYPE & TEMPER		AP	
DRAWN		ELEC. DES. APP.	
SIMPSON		MECH. DES. APP.	
HEAT TREAT SPEC.		CHECKED	
		FINAL APPROVAL	
FINISH & SPEC. NO.		Sht. 3 of 8 A10735-3 H	

A10735-5 H

IF IT IS FOUND DESIRABLE TO CHANGE ANY TOLERANCE OR OTHER DETAIL SPECIFIED ON THIS DRAWING NOTIFY THE PURCHASER PROMPTLY				DIMENSIONS IN INCHES UNLESS OTHERWISE SPECIFIED			
MAXIMUM ALLOWABLE TOLERANCES HAVE BEEN DETERMINED AND DEVIATIONS WILL BE CAUSE FOR REJECTION REMOVE ALL BURRS AND SHARP EDGES							
ISSUE	ITEM	CHANGED FROM	DATE	CN NO	DRAFTS	CHECKER	ENG APP
Ø		RELEASED TO PROD	29 JUN 69				
A		REV AS PER CEMN	11/17/69	456	AD		
B		REV AS PER CEMN	28 APR 69	473	ES		
C		REV AS PER CEMN	17 FEB 71	721	ff		
D		REV AS PER CEMN	MAR 18/70	742	ff		
E		SEE SHEET 2	11/65		CC	48	JW
F		REV AS PER CEMN	3-30-75	1239	AM	SCW	SPW
G		L6 Added	6-23-80	21886			
H		SHEET B REDRAWN W/CHANGES	6-29-84			CDL	

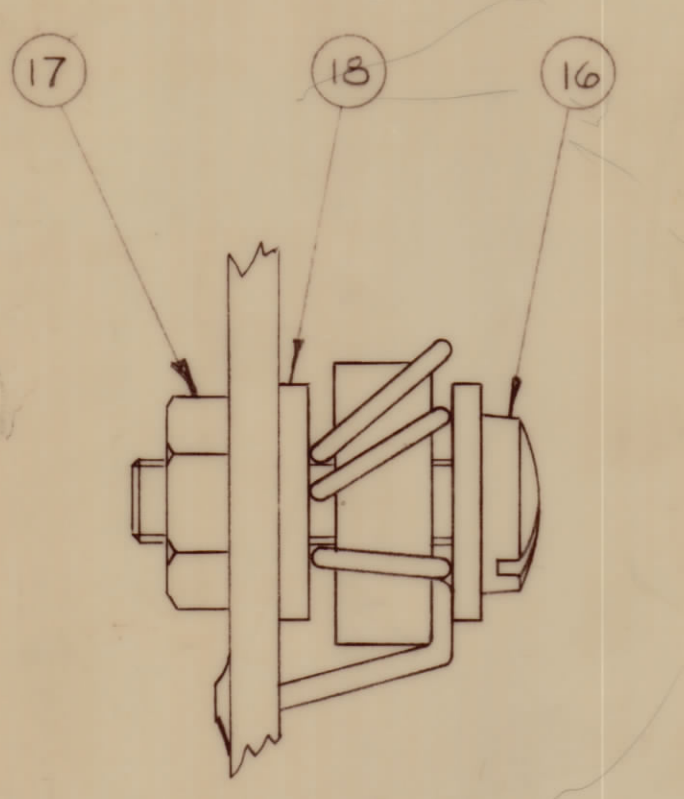
REQ	ITEM	PART NO	DESCRIPTION	SYMBOL
1	1	A10735-4	PC ASSY (SDB) PRE AMPLIFIER	
1	2	HD10002-7	HEAT SINK	
2	3	HD10004	HEAT SINK	
3	4		TRANSISTOR	
8	5		RESISTOR FIXED	
1	6		RESISTOR VARIABLE	R6
9	7		CAPACITOR	
1	8		DIODE	CR1
5	9		COIL RF	
4	10	FW 02 HBN	WASHER - FLAT	
4	11	LWS 02 MRN	WASHER LOCK SPLIT	
4	12	SCBP025GBN4	SCREW	
1	13	PX 829-1	PAD TRANSISTOR MTG	
AR	14	GL138	COMPOUND, SILICONE, HEAT SINK	
1	15		TRANSFORMER	T1
1	16	SC143 0440 B8W	SCREW	
1	17	NT 137 0440	NUT	
1	18	FW 103 -1	WASHER	

- Q1, Q2, Q3
- R1, R2, R3, R4, R5, R7, R8, R9
- C1, C2, C3, C4, C5, C6, C7, C8, C9
- L1, L2, L3, L4, L5, L6

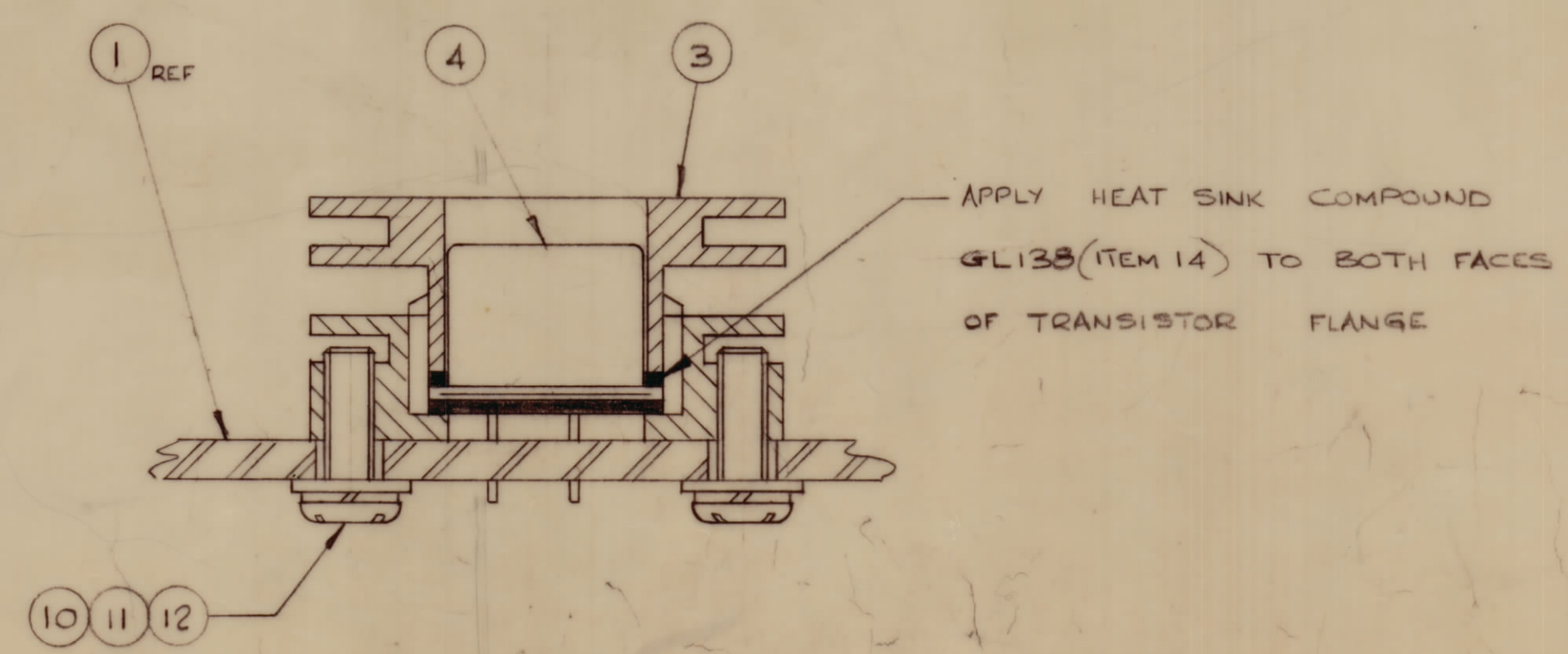


APPLY HEAT SINK COMPOUND
GL138 (ITEM 14) TO SIDE
FACE OF Q1

TMC PART NO. COMPLETE WITH LATEST REV LETTER
ADD 'DASH' NUMBER



SCRAP VIEW ON ARROW B



SECTION A-A
TYPICAL ASSY FOR Q2 & Q3

TOLERANCES UNLESS OTHERWISE SPECIFIED	SCALE: 4:1
ALL DEC DIM ± .X ± .05 FRAC DIM ± .XX ± .01 ANGULAR DIM ± 0° 30' .XXX ± .005	DRAWN: FUNCH, COMMERCIAL STOCK SIZES AND MANUFACTURERS TOLERANCES ARE NOT INCLUDED

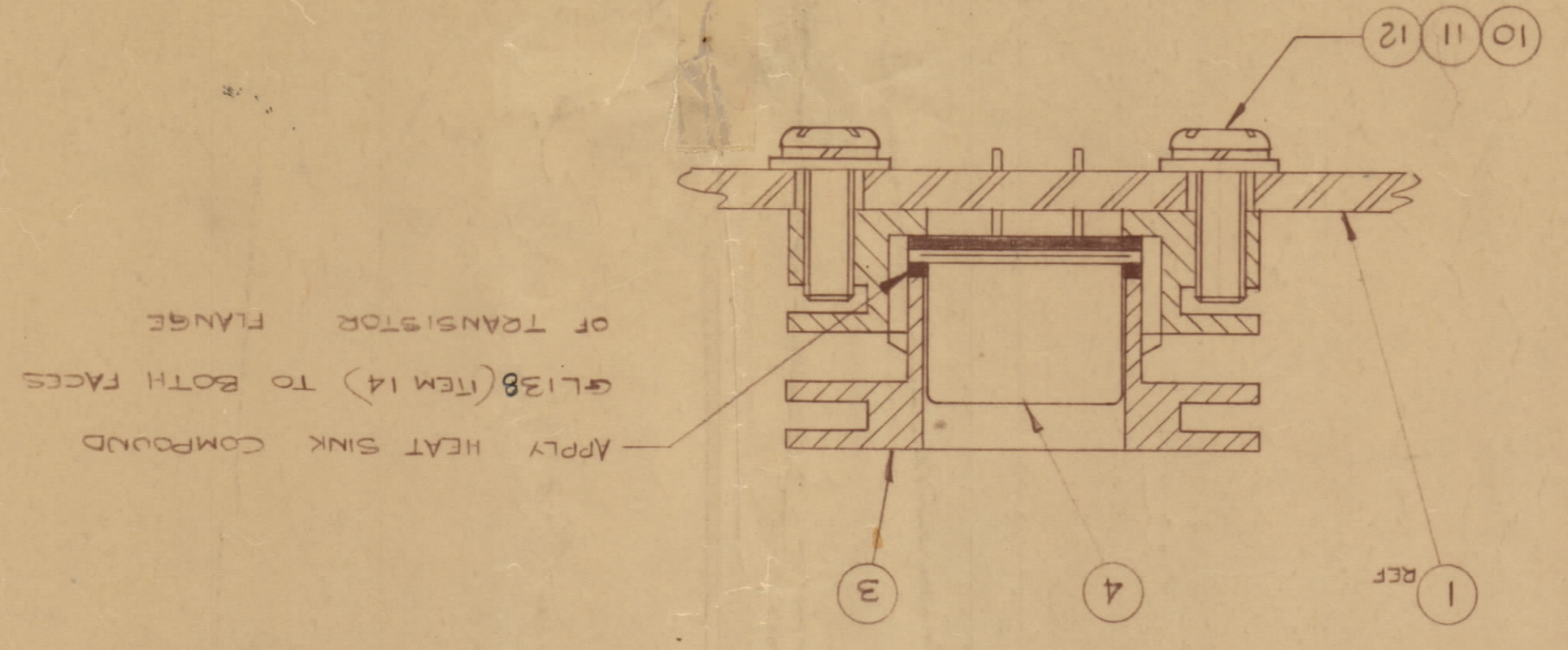
AMC B	074/69		
MODEL	PROJECT NO.	ASSY NO.	DATE
USED ON			

TMC (Canada) LIMITED OTTAWA ONTARIO			
PRINTED CIRCUIT ASSY PRE-AMPLIFIER			
MATERIAL	WEIGHT PER PC		
TYPE & TEMPER	SIMPSON	ELEC DES APP	MECH DES APP
HEAT TREAT SPEC	CHECKED	FINAL APPROVAL	
FINISH & SPEC NO.	SHT 5 of 8	A10735-5	H

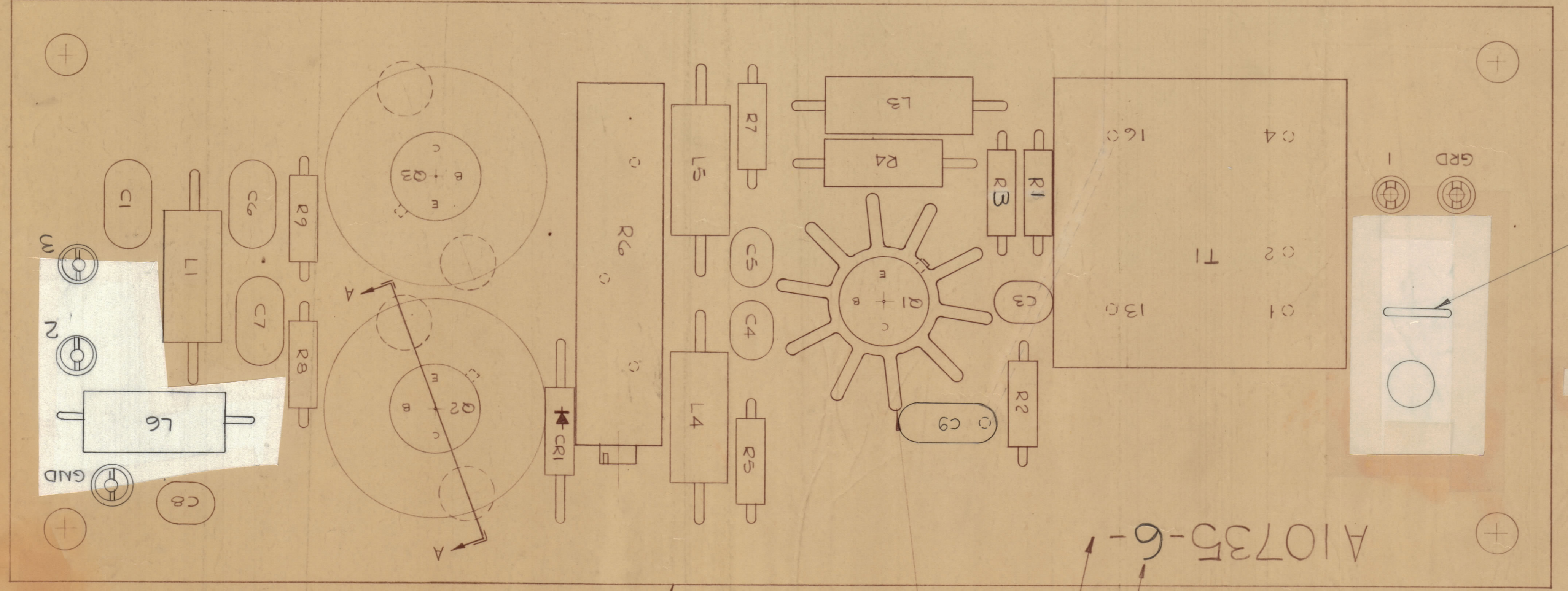
MODEL	AMC 21
PROJECT NO.	
ASSY. NO.	
DATE	29 JAN 69
USED DIM.	
FINISH & SPEC. NO.	
HEAT TREAT SPEC.	
TYPE & TEMPER.	
MATERIAL	
WEIGHT PER PC.	
STOCK SIZE	
PRINTED CIRCUIT ASSY	
PRT - AMPLIFIER (502 I/P)	
DRAWN	S.M. SOON
ELEC DES APP.	
Mech DES APP.	
FINAL APPROV.	
SHT 6 OF 8	A10735-6 H

TYPICAL ASSY FOR Q2A Q2

SECTION A-A



APPLY HEAT SINK COMPOUND
 GL138 (ITEM 14) TO BOTH FACES
 OF TRANSISTOR FLANGE



A10735-6

TMC PART NO. COMPLETE WITH LATEST REV LETTER
 ADD DASH NUMBER

FACE OF Q1
 GL138 (ITEM 14) TO SIDE

APPLY HEAT SINK COMPOUND

13 4 2

1

NO.	ITEM	PART NO.	DESCRIPTION
1	1	A10735-4	PC ASSY (SUB) PRT AMPLIFIER
2	1	HD10002-7	HEAT SINK
3	3	HD10004	HEAT SINK
4	4	Q1, Q2, Q3	TRANSISTOR
5	8	R1, R2, R3, R4, R5, R7, R8, R9	RESISTOR, FIXCD
6	1	C1, C2, C3, C4, C5, C6, C7, C8, C9	RESISTOR, VARIABLE
7	8	L1, L2, L3, L4, L5, L6	CAPACITOR
8	1	D1	DIODE
9	4	CR1	COIL RF
10	4	FW 02 HBN	WASHER - FLAT
11	4	LWS 02 MRN	WASHER LOCK SPRIT
12	4	SCREWS 020x0.8x0.4	SCREW
13	1	PX 829-1	PAD TRANSISTOR MTA
14	1	GL138	COMPOUND, SILICONE, HEAT SINK
15	1	T1	TRANSFORMER
17	1		

ISSUE	ITEM	CHANGED FROM	DATE	BY	CHKD BY	CHKD BY
φ		RELEASED TO PROD	69	AP		
A		REV AS PER CEMN	69	AP		
B		REV AS PER CEMN	69	AP		
C		REV AS PER CEMN	721	AP		
D		REV AS PER CEMN	742	AP		
E		SEE SHEET B		CC LB		
F		REV PER CEMN	723	AP		
G		L6 Added	72866	AP		
H		Q1 @ REVISION W/quantity	8-29-70	AP		

A10735-6 I

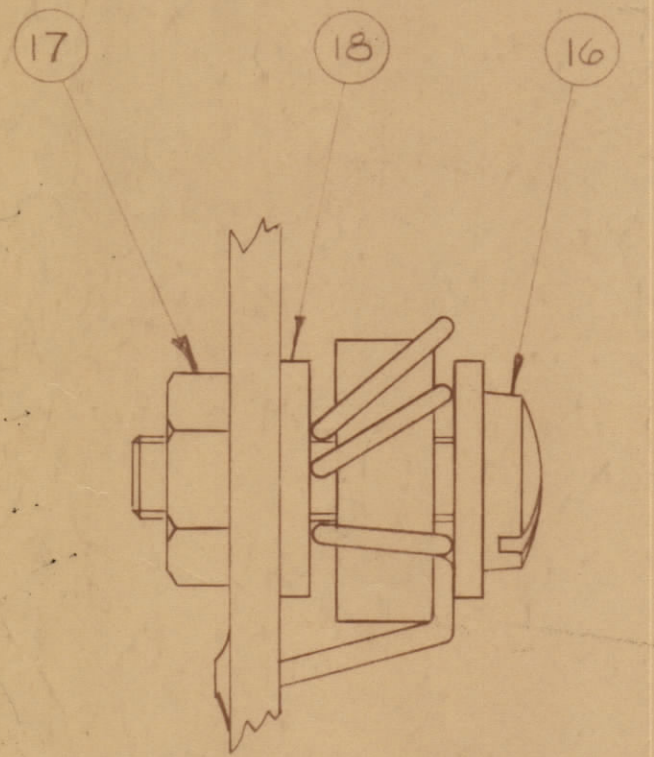
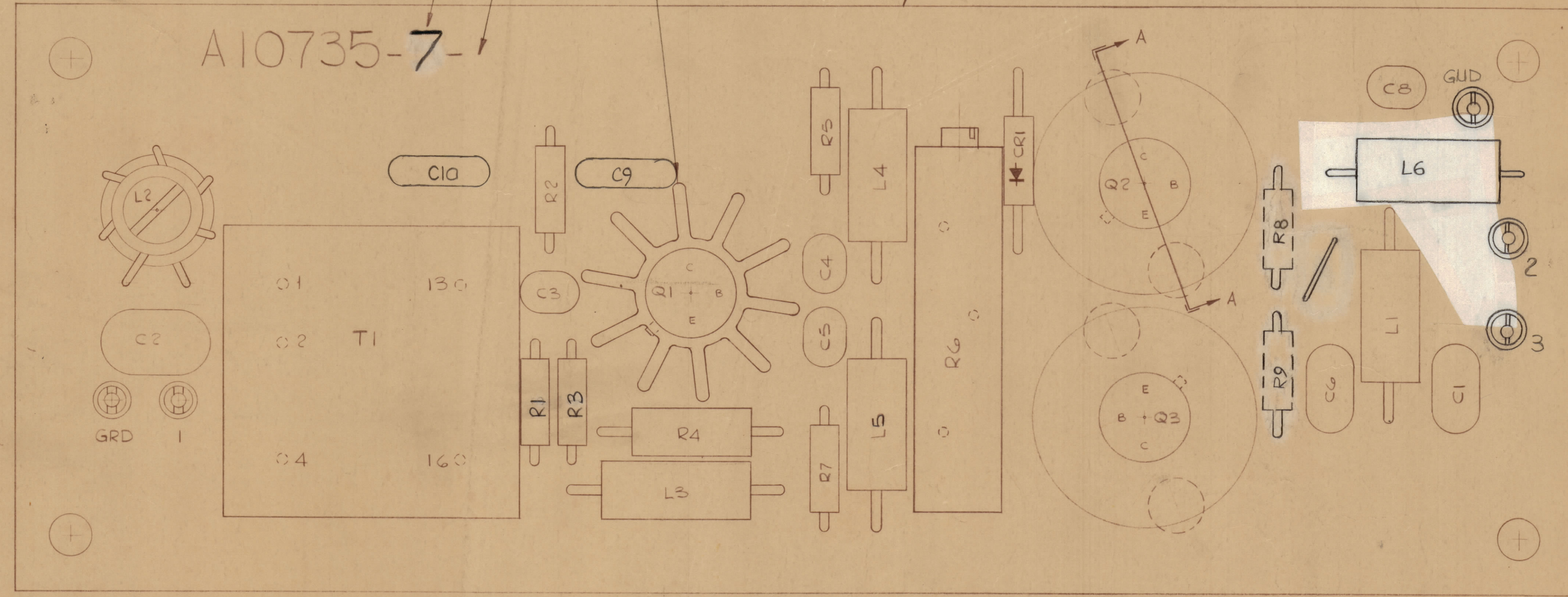
ISSUE	ITEM	CHANGED FROM	DATE	EN NO	DRAFTS	CHECKER	ENG APP
A		REV AS PER CEMN	MAR 11/69	456	AP		
B		REV AS PER CEMN	28 APR 69	473	B		
C		REV AS PER CEMN	7 FEB 70	721	AP		
D		REV AS PER CEMN	MAR 16/70	742	AP		
E		SEE SHEET 2	MAR 22 70	CC	LB		
F		REV PER CEMN	23 JUN 73	1239	AMM	SOW	SOW
G		L6 Added	6/28/80	21886	AK		
H		SHEET B REDRAWN WITH CHANGE	8/27/80		AK		

A10735-7 H

- Q1 Q2 Q3
- R1 R2 R3 R4 R5 R7
- C1 C2 C3 C4 C5 C6 C8
- L1 L2 L3 L4 L5

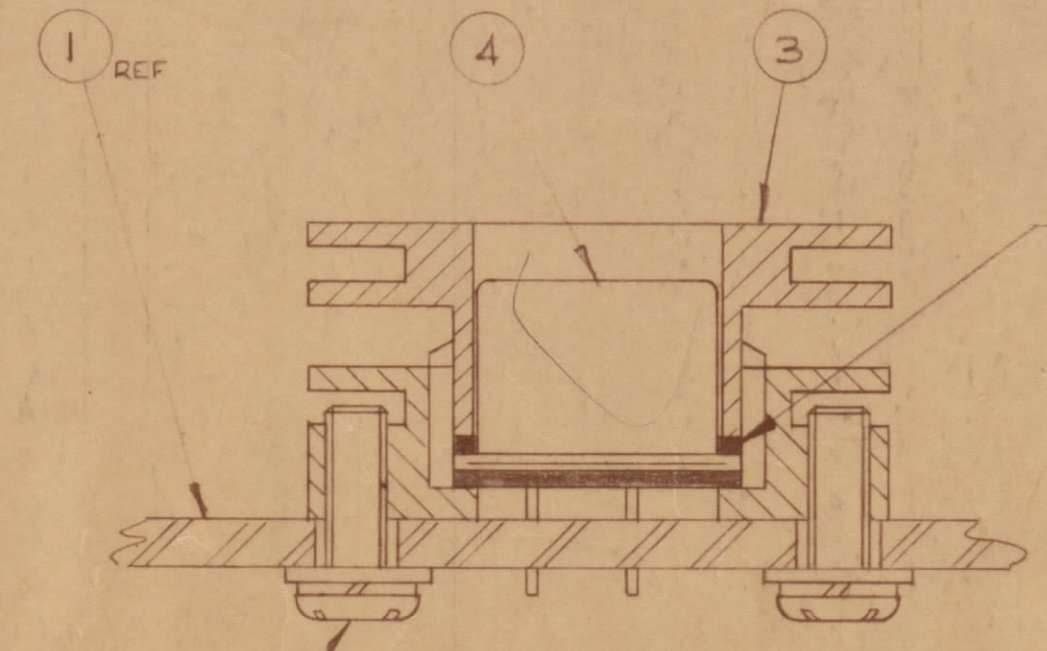
REQ	ITEM	PART NO	DESCRIPTION	SYMBOL
1	1	A10735-4	PC ASSY (S08) PRE AMPLIFIER	
1	2	HD10002-7	HEAT SINK	
2	3	HD10004	HEAT SINK	
3	4		TRANSISTOR	
6	5		RESISTOR FIXED	
1	6		RESISTOR VARIABLE	R6
7	7		CAPACITOR	
1	8		DIODE	CR1
5	9		COIL RF	
4	10	FW 02 HBN	WASHER FLAT	
4	11	LWS 02 MR1	WASHER LOCK SPLIT	
4	12	SCB025GBN4	SCREW	
1	13	PX 829-1	PAD TRANSISTOR MTG	
AK	14	GL138	COMPOUND, SILICONE, HEAT SINK	
1	15		TRANSFORMER	TI
1	16	SC143 0440-B5W	SCREW	
1	17	NT 137-0440	NUT	
1	18	FW 103-1	WASHER	

TMC PART NO. COMPLETE WITH LATEST REV LETTER
ADD 'DASH' NUMBER



SCRAP VIEW ON ARROW B

APPLY HEAT SINK COMPOUND
GL138 (ITEM 14) TO SIDE
FACE OF Q1



APPLY HEAT SINK COMPOUND
GL138 (ITEM 14) TO BOTH FACES
OF TRANSISTOR FLANGE

SECTION A-A
TYPICAL ASSY FOR Q2 & Q3

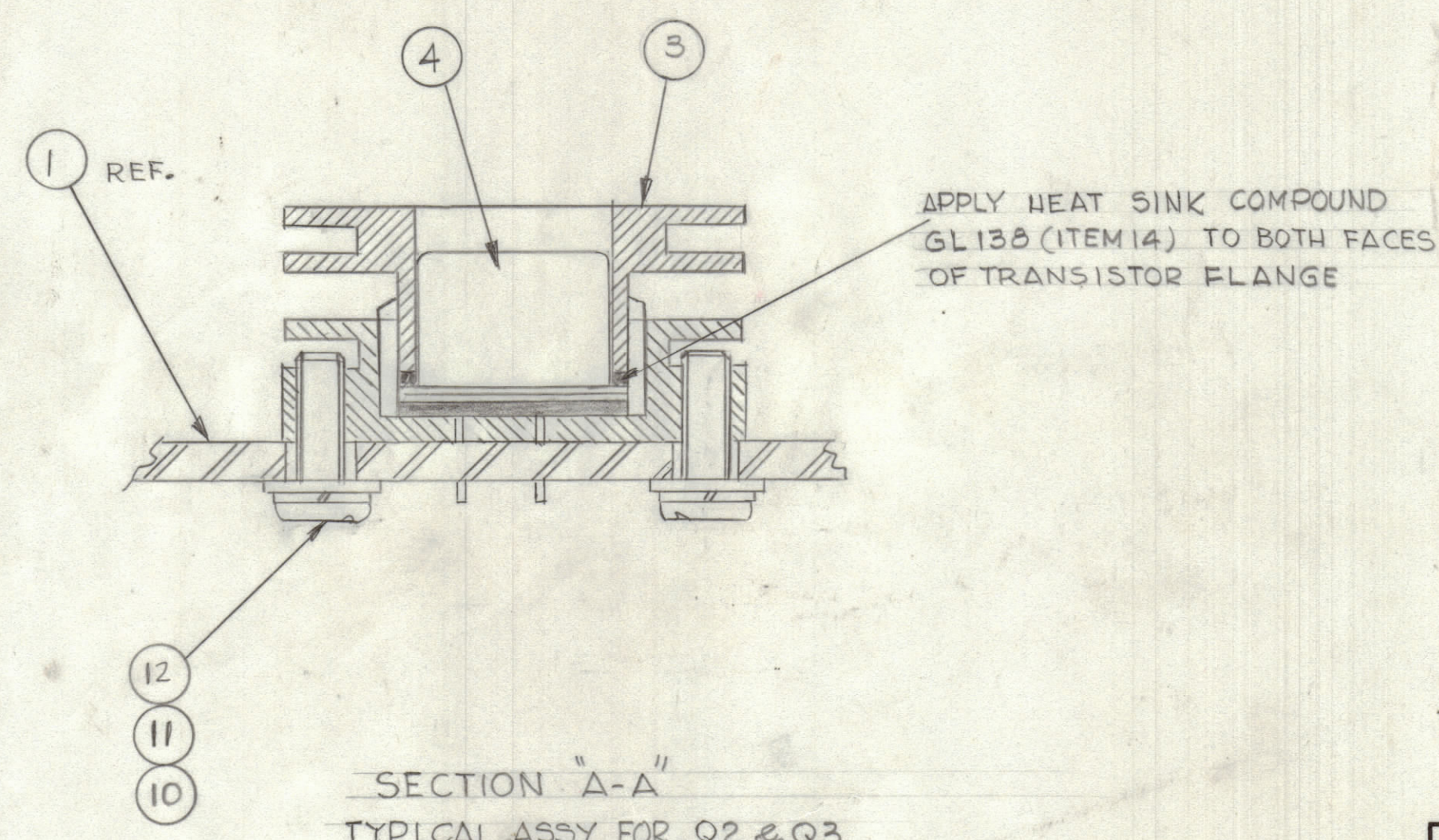
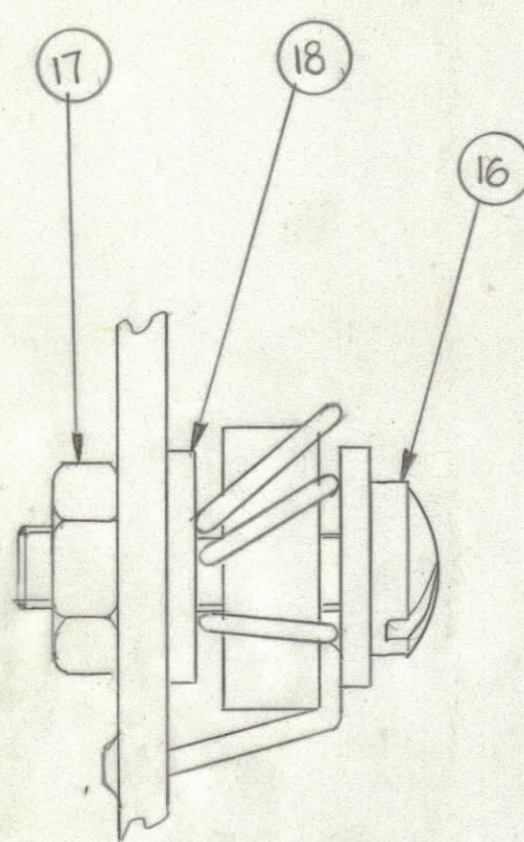
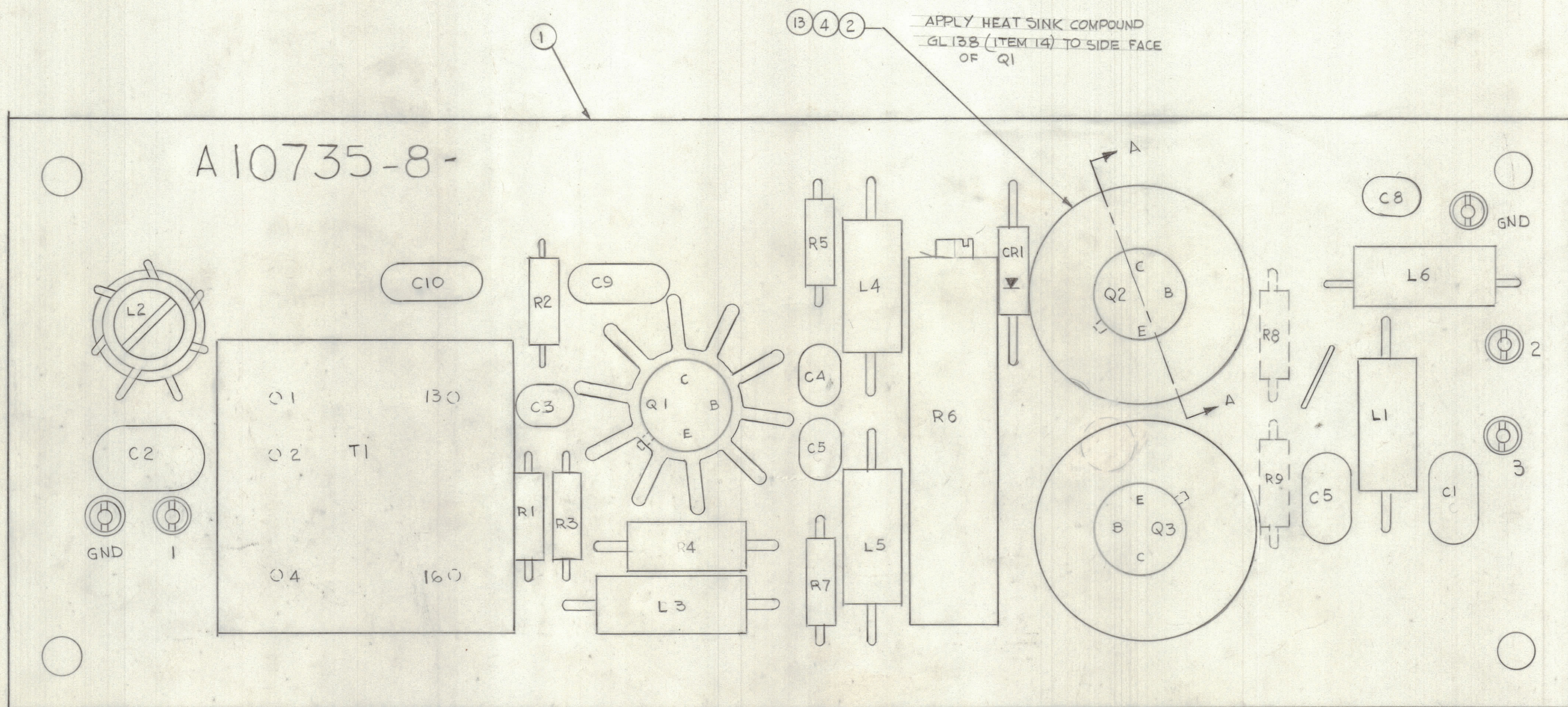
TOLERANCES UNLESS OTHERWISE SPECIFIED	SCALE
ALL DEC DIM .3 ± .05 FRACTIONAL DIM .XX ± .01 ANGULAR DIM 1° 30' XXX ± .005	4:1 DRILL PUNCH COMMERCIAL STOCK SIZES AND MANUFACTURERS TOLERANCES ARE NOT INCLUDED

AMC 32	074/69	ASSY NO	DATE
MODEL	PROJECT NO	USED ON	

TMC (Canada) LIMITED OTTAWA ONTARIO			
PRINTED CIRCUIT ASSY PRE-AMPLIFIER			
MATERIAL	WEIGHT PER PC	SIMPSON	
TYPE & TEMPER		ELEC DES APP	MECH DES
HEAT TREAT SPEC		CHECKED	FINAL APPROVAL
FINISH & SPEC NO		SHT 7 of 8 A10735-7 H	

SHEET 2 MISSING

REVISIONS							
E.M.N.O.	DRAFT	CHKD	ZONE	LTR	DESCRIPTION	DATE	APPROVED
	GDL		H		REDRAWN W/OUT CHANGES PRC MISSING	8-29-90	



QTY.	ITEM	PART NO.	DESCRIPTION	SYMBOL
1	18	FW 103-1	WASHER, FLAT	
1	17	NT137-0440	NUT, HEX.	
1	16	SC143-0440 B2W	SCREW, MACHINE	
1	15		TRANSFORMER	T1
AR	14	GL 138	COMPOUND, SILICONE, HEAT SINK	
1	13	PX 829-1	PAD TRANSFORMER MTG.	
4	12	SCBP0256 BNA	SCREW, MACHINE	
4	11	LW502 MRN	WASHER, LOCK SPLIT	
4	10	FW02 HBN	WASHER, FLAT	
5	9		COIL RF	L1, L2, L3
1	8		DIODE	CR1
9	7		CAPACITOR	C1, C2, C3, C4, C5, C8
1	6		RESISTOR VARIABLE	R6
8	5		RESISTOR FIXES	R1, R2, R3, R4, R5, R7, R8, R9
3	4		TRANSISTOR	Q1, Q2, Q3
2	3	HD 10004	HEAT SINK	
1	2	HD 10002-7	HEAT SINK	
1	1	A10735-4	PC ASSY (SUB) PRC AMPLIFIER	

AMC-32		
QTY / UNIT	MODEL USED ON	ASSY NO.
APPLICATION		
CODE		
<small>NOTICE TO PERSONS RECEIVING THIS DRAWING</small> <small>THE TECHNICAL MATERIEL CORPORATION claims proprietary right in the material disclosed herein. This drawing is issued in confidence for engineering information only and may not be reproduced or used to manufacture anything shown herein without permission from THE TECHNICAL MATERIEL CORPORATION to the user. This drawing is loaned for mutual assistance and is subject to recall at any time.</small>		

UNLESS OTHERWISE SPECIFIED DIMENSIONS ARE IN INCHES AND INCLUDE CHEMICALLY APPLIED OR PLATED FINISHES	FINAL APPROVAL	DATE
TOLERANCES ON DECIMALS .X ± .05 .XX ± .01 .XXX ± .005 FRACTIONS ± 1/64 ANGLES ± 0° - 30'	MECH. DES.	DATE
	ELECT. DES.	DATE
	CHECKED	DATE
	DRAWN	DATE
MATERIAL		
FINISH		

THE TECHNICAL MATERIEL CORP. MAMARONECK, NEW YORK			
PRINTED CIRCUIT ASSY PRE AMPLIFIER			
SIZE	CODE	IDENT NO.	DWG NO.
D	82679	A10735-8	H
SCALE 4:1			SHEET 8 OF 8