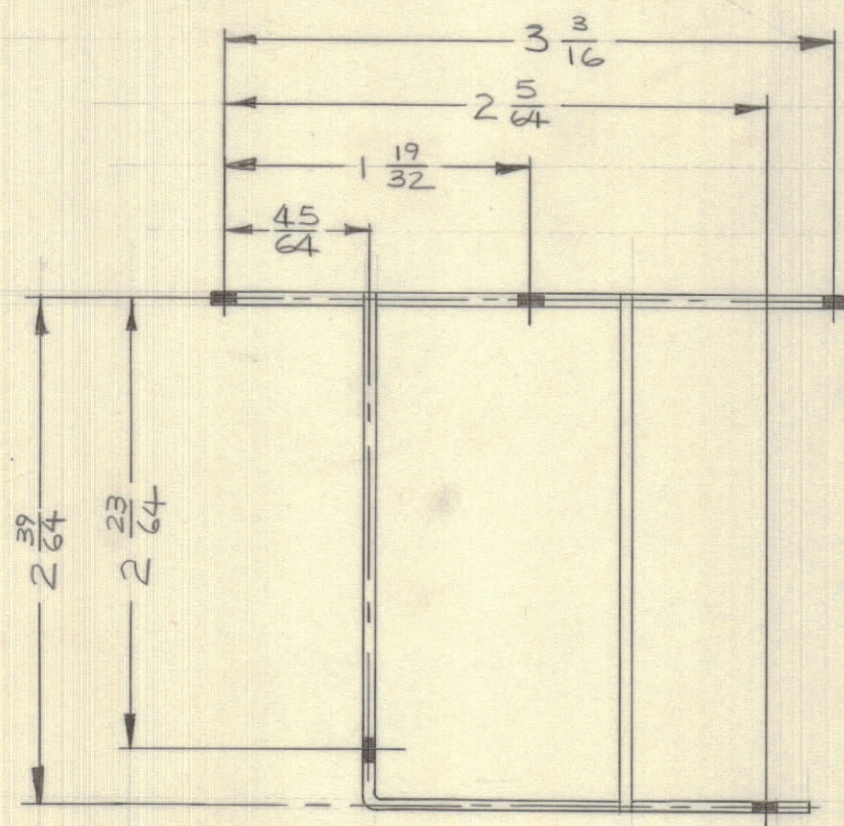
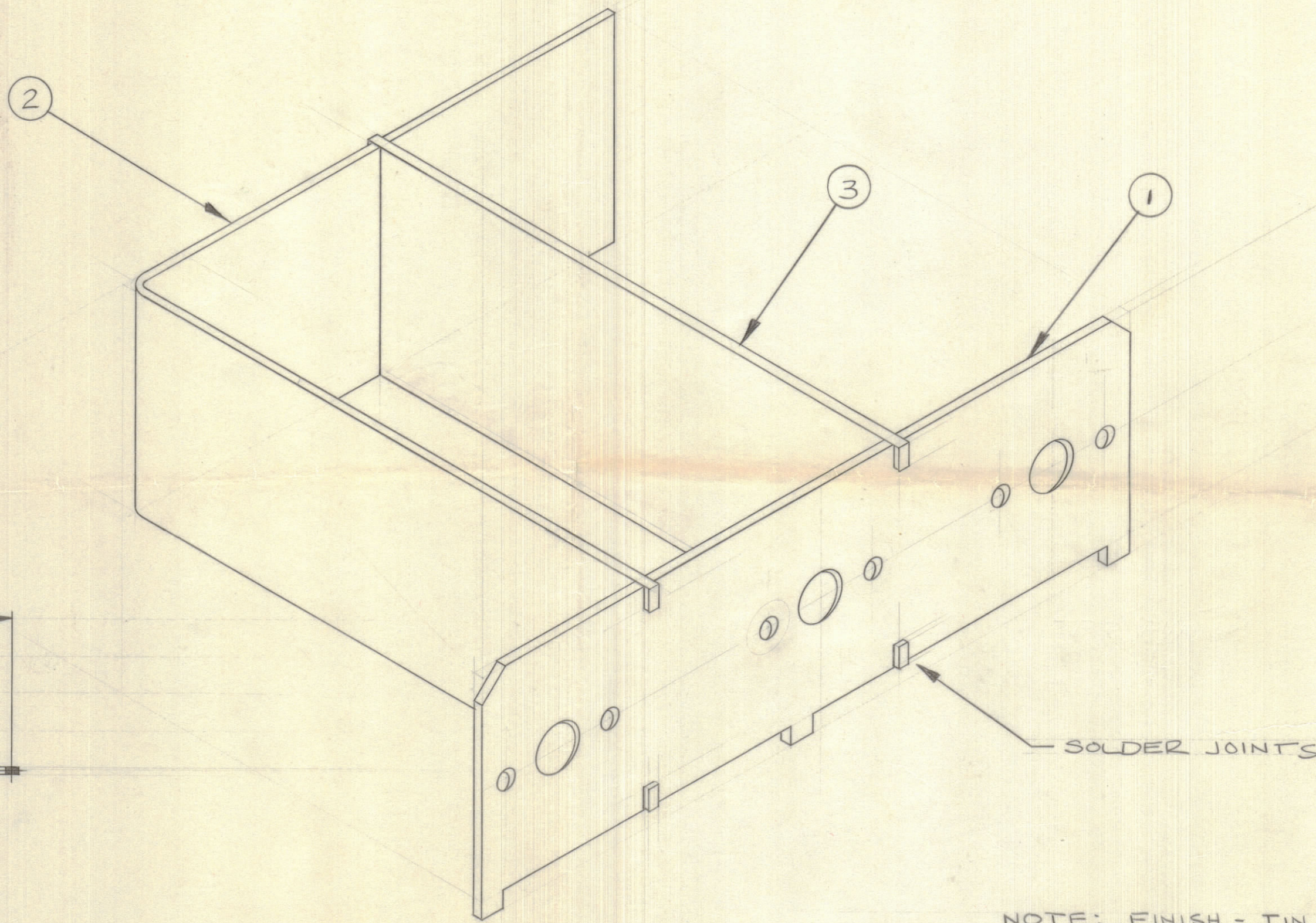


IF IT IS FOUND DESIRABLE TO CHANGE ANY TOLERANCE OR OTHER DETAIL SPECIFIED ON THIS DRAWING NOTIFY THE PURCHASER PROMPTLY.		DIMENSIONS IN INCHES UNLESS OTHERWISE SPECIFIED					
MAXIMUM ALLOWABLE TOLERANCES HAVE BEEN DETERMINED AND DEVIATIONS WILL BE CAUSE FOR REJECTION. REMOVE ALL BURRS AND SHARP EDGES.							
ISSUE	ITEM	CHANGED FROM	DATE	CN. NO.	DRAFTS	CHECKER	ENG. APP.
0		REL. TO PROD.	JULY 17/68		RPL		<i>[Signature]</i>

REQ.	ITEM	PART NO.	DESCRIPTION	SYMBOL
1	1	MS10918	SHIELD	
1	2	MS10920	SHIELD	
1	3	MS10919	SHIELD	
A2	4	BS101	SOLDER, SILVER	



BOTTOM VIEW

SOLDER JOINTS

NOTE: FINISH - TIN PLATE (HOT DIP OR ELECTROPLATE)

A10719 ∅

TOLERANCES		SCALE:
ALL OTHERS	DEC. DIM. ± 1/64 FRAC. DIM. ± 1/64 ANGULAR DIM. ± 0° 30'	.X = .05 .XX = .01 .XXX = .005 DRILL, PUNCH, COMMERCIAL STOCK SIZES AND MANUFACTURERS TOLERANCES ARE NOT INCLUDED.

TTR2-4(E)	067/68	JULY 17/68
MODEL	PROJECT NO.	DATE

STOCK SIZE		TMC (Canada) LIMITED OTTAWA ONTARIO	
MATERIAL		SHIELD, ASS'Y	
WEIGHT PER PC.			
TYPE & TEMPER		RPL	
HEAT TREAT. SPEC.		DRAWN: <i>[Signature]</i> ELEC. DES. APP: <i>[Signature]</i> MECH. DES. APP: <i>[Signature]</i>	
FINISH & SPEC. NO.		CHECKED: <i>[Signature]</i> FINAL APPROVAL: <i>[Signature]</i>	
		A10719 ∅	