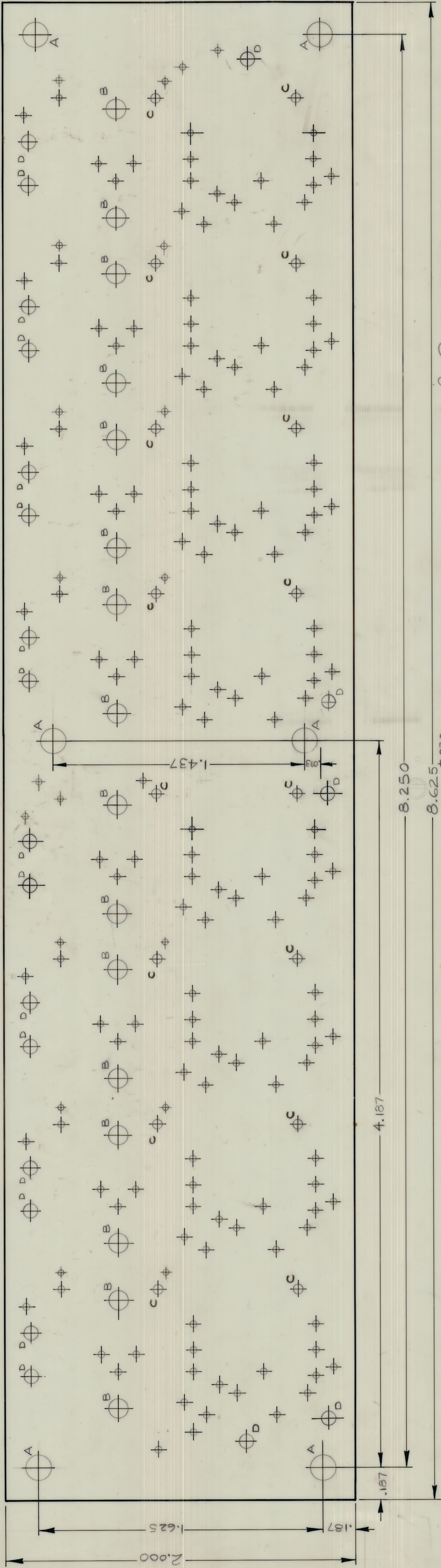


ZONE	SYM	REVISIONS	DATE	BY	CHKD	APP
Ø		RELEASED TO PRODUCTION	2/23/69	PS		MM
A		REVISED AS PER CEMN	27RE 447	PS		MM
B		REVISED AS PER CEMN	27RE 464	PS		MM
C		REVISED AS PER CEMN	28APR 473	PS		MM
D		REVISED AS PER CEMN	8 JULY 508 AP	PS		MM
E		REVISED PER CEMN	10 APR 71	FR		MM
F		REVISED PER CEMN	10 APR 984	MM		MM
G		ONE 'D' HOLES ADDED ON THE BOTTOM	1-784 220/10/50L			MM



OBSSO LETS USE A10791

NOTES:
(1) MATERIAL: PLASTIC SHEET, LAMINATED COPPER CLAD FL-GE-062-C-2/2 PER MIL-P-13949
(2) ALL HOLES TO BE PLATED THROUGH WITH A MINIMUM WALL THICKNESS OF .001 OF COPPER
(3) CONDUCTIVE PATTERN TO BE PLATED WITH A MINIMUM OF .0003 INCH OF TIN LEAD
(4) THIS BOARD SHALL MEET THE REQUIREMENTS OF TMC'S SPEC. 735

HOLE	DESCRIPTION	REQ'D
A	.140 DIA.	6
B	.109 DIA.	16
C	.053 DIA.	16
D	.063 ± .005 DIA	21
UNMARKED	.035 DIA	72

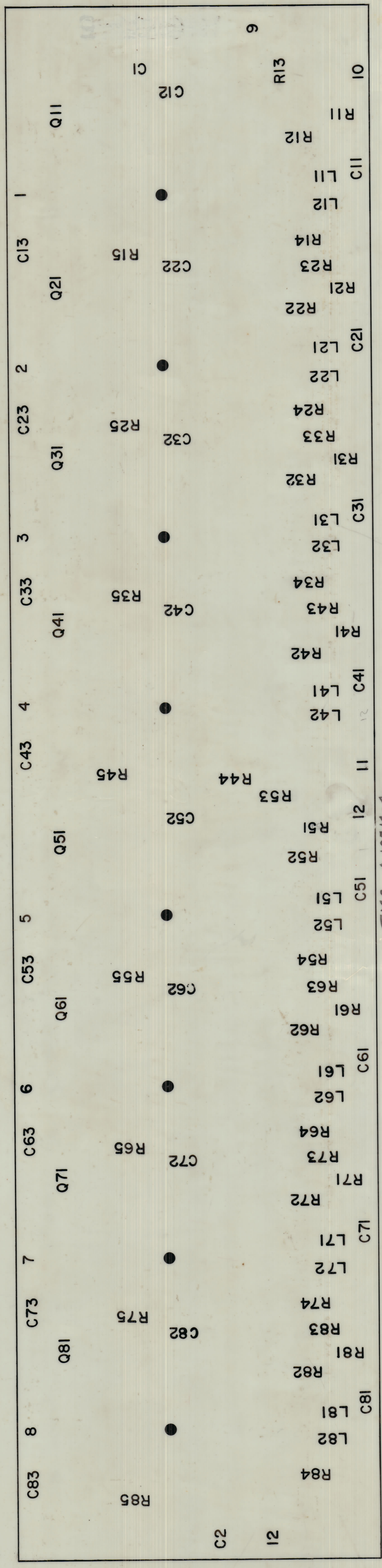
DATE: 07/14/68
PROJECT NO: 0747/68
REVISED: 07/14/68
DATE: 07/14/68
DATE: 07/14/68

SEE NOTES
MATERIAL: PC. ASSY. OUTPUT
TYPE & QUANTITY
CHECKED: RPL
DATE: 07/14/68
BY: [Signature]

TMC (Canada) LIMITED
OTTAWA, ONTARIO

SHEET 20F 6 A10714-2 6

MARK	ITEM	CHANGED FROM	DATE	BY	CHKD BY	APP.
A	REVISED TO PROD	2175	67	ES		
B	REV AS PER CDAN	447		ES		
C	REV AS PER CEMU	464		ES		
D	REV AS PER CDMU	473		ES		
E	REV PER CEMM	508		AP		
F	REV PER CEMM	944		RV		
G	NO. 13 ADD. MARGINS	984		UMT		
	REVISED	2048		GDJ		



SCALE - 4:1
 NEGATIVE - 1:1
 REF. TOP PATTERN

- LETTERING NOTES
1. WHITE EPOXY PAINT
 2. HEIGHT OF LETTERS - .062 ± .005
 3. WIDTH OF LINES - .015 ± .005
 4. MACHINING TO MEET REQUIREMENTS OF TMC SPEC 737
 5. HOLES TO BE 1/16 DIA
 6. HEIGHT OF BOARD NOT CHARACTERIZED - .125 ± .005
 7. WIDTH OF LINES FOR BOARD NOS - .020 ± .005

TMC A 10714-4

OBSOLETE USE
 A10791

STOCK SIZE	
MATERIAL	POINTED CIRCUIT BOARD
TYPE & TEMPER	B OUTPUT (LETTERING)
HEAT TREAT SPEC	BASTLETT
FINISH & SPEC. NO.	SIMPSON

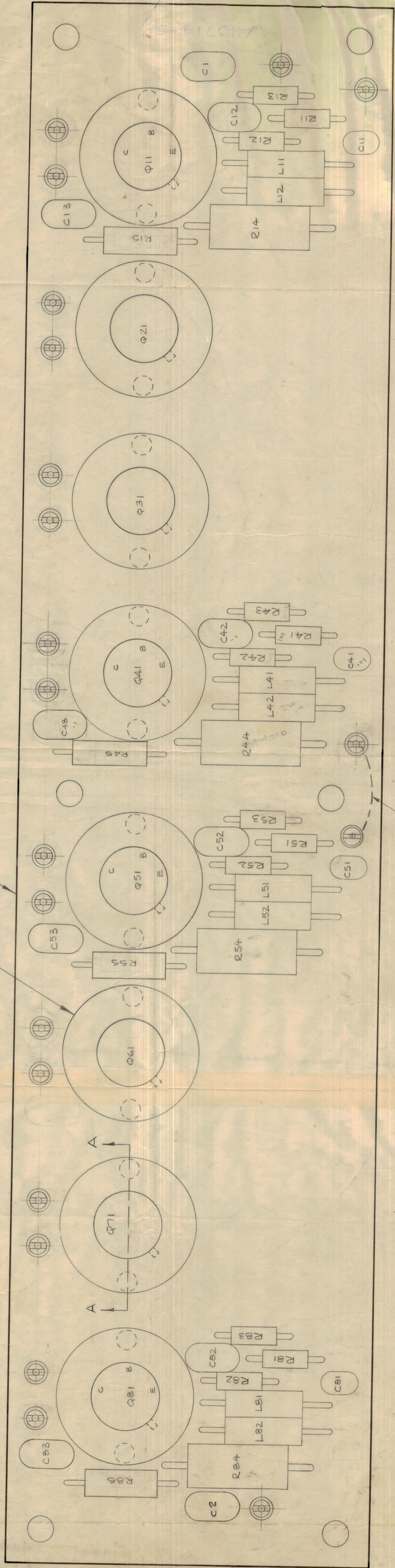
MODEL	AMC B
PROJECT NO.	074/69
ASBY. NO.	
DATE	18 DEC 68
SHEET NO.	6
TOTAL SHEETS	6

TOLEANCES UNLESS OTHERWISE SPECIFIED	SCALE	4:1
ALL DIM. ±		
OTHER		

A10714-5 F

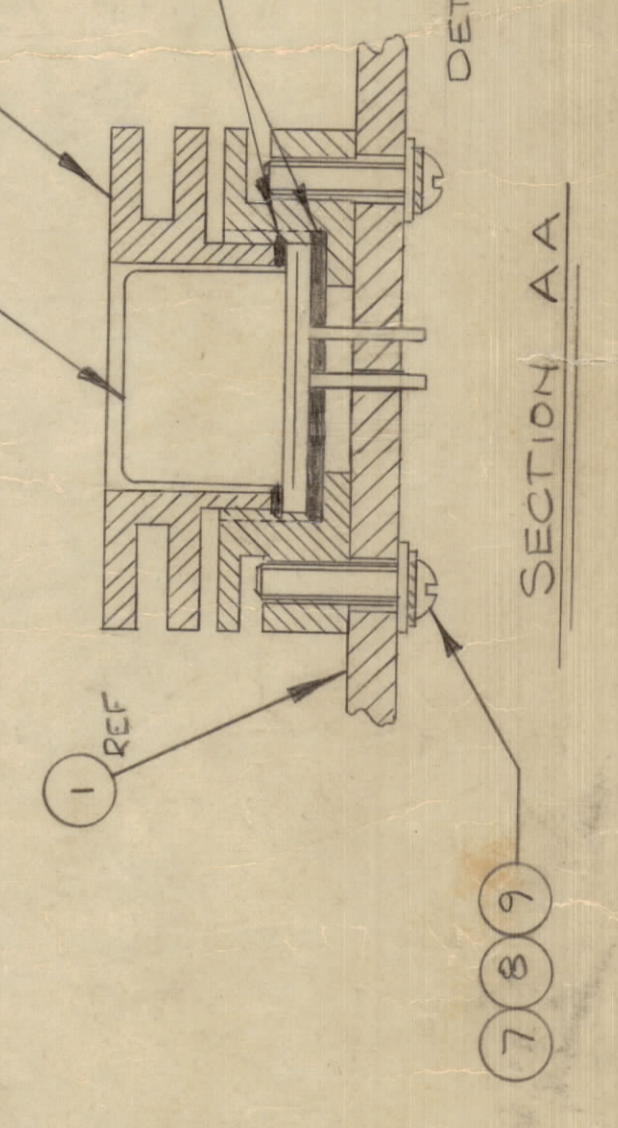
DRAWING NO.	REVISION	CHANGED FROM		DATE	BY	CHECKED BY	APPROVED BY
		DATE	BY				
10714-5	0						
A	REV AS PER CEMN	8/2/65	WJ		WJ		
B	REV AS PER CEMN	8/2/65	WJ		WJ		
C	REV AS PER CEMN	8/2/65	WJ		WJ		
D	REV AS PER CEMN	8/2/65	WJ		WJ		
E	REV PER CEMN	8/2/65	WJ		WJ		
F	ADD ONE TE, NUMBER 38	8/2/65	WJ		WJ		
G	2-NOTES	8/2/65	WJ		WJ		

ITEM	QUANTITY	PART NO.	DESCRIPTION
1	1	A10714-4	PC. ASSY OUTPUT
2	2	HDI0004	HEAT SINK
3	8		TRANSISTOR
4	160		RESISTOR, FIXED
5	26		CAPACITOR, FIXED
6	16		COIL, RF
7	16	FWD2.H55	WASHER, FLAT
8	16	LWED2.M55	LOCK EXTERNAL
9	16	SPR254.S54	SCREW MACHINE
10	16	GL13.B	COMPOND SILICONE HEAT SINK
11	16	BS100	SOLDER, SPT



FOR 10714-6 ADD JUMPER
FOR 10714-65 REMOVE JUMPER

APPLY HEAT SINK COMPOUND GL13B (ITEM 10)
TO BOTH FACES OF THE TRANSISTOR FLANGES



SECTION AA

STOCK SIZE		TMC (Canada) LIMITED OTTAWA ONTARIO
MATERIAL	PC ASSY OUTPUT	
TYPE & TEMPER	RPL	
HEAT TREAT SPEC	CHECKED	
PROJECT NO.	AMC 8 75 J	
DATE	AMC 22	
PROJECT NO.	AZ10001	
DATE	SEPT 20 1965	
DRAWN BY		
CHECKED BY		
SHEET NO.	696	56
TOTAL SHEETS		

TOLERANCES UNLESS OTHERWISE SPECIFIED	SCALE	DRAWING
ALL DIMENSIONS	1:1	PC. ASSY OUTPUT
HOLE DIA. ± .005		
POSITION ± .010		
ANGLES ± .5°		
THREADS PER INCH		
FINISHES ARE NOT INCLUDED		