

ISSUE	ITEM	CHANGED FROM	DATE	CH. NO.	DRAFTS	CHECKER	ENG. APP.
0		REL TO PROD	JULY 22/69		AP		

BOTTOM PATTERN



NOTES:

1. THIS BOARD MUST MEET THE REQUIREMENT OF TMC SPECIFICATION 735
- 2 MATERIAL : PLASTIC SHEET LAMINATED COPPER CLAD FL-GE-062-C-2/0
- 3 FINISH : CONDUCTIVE PATTERN TO BE PLATED WITH A MINIMUM OF .0003 THK TIN/LEAD

HOLE	DESCRIPTION	REQ'D
A	.140 DIA.	4
B	.125 DIA.	4
C	.063 $\begin{matrix} +.003 \\ -.000 \end{matrix}$	3
D	.046 DIA.	4
UNMARKED	.035 DIA.	2

MODEL: WAC-1		PROJECT NO: 074/69		DATE: 7-17-69		TMC (Canada) LIMITED OTTAWA ONTARIO	
USED ON				STOCK SIZE		PC. ASS'Y OUTPUT	
MAXIMUM ALLOWABLE TOLERANCES HAVE BEEN DETERMINED AND DEVIATIONS WILL BE CAUSE FOR REJECTION. REMOVE ALL BURRS AND SHARP EDGES.				IF IT IS FOUND DESIRABLE TO CHANGE ANY TOLERANCE OR OTHER DETAIL SPECIFIED ON THIS DRAWING NOTIFY THE PURCHASER PROMPTLY.			
TOLERANCES		SCALE: 4:1		MATERIAL		WEIGHT PER PC	
DEC. DIM. ± .005		DIMENSIONS IN INCHES UNLESS OTHERWISE SPECIFIED		TYPE & TEMPER		DRAWN: GR	
FRACTIONAL DIM. ± 1/100		.XX = .01		HEAT TREAT. SPEC.		ELEC. DES. APP. SIMPSON	
ANGULAR DIM. ± 0°30'		.XXX = .005		CHECKED		MECH. DES. APP.	
OTHERS: DRILL: PUNCH: COMMERCIAL STOCK DIMS AND MANUFACTURERS TOLERANCES ARE NOT INCLUDED.				FINISH & SPEC. NO.		FINAL APPROVAL	
				Sht 2 of 5		A107562	

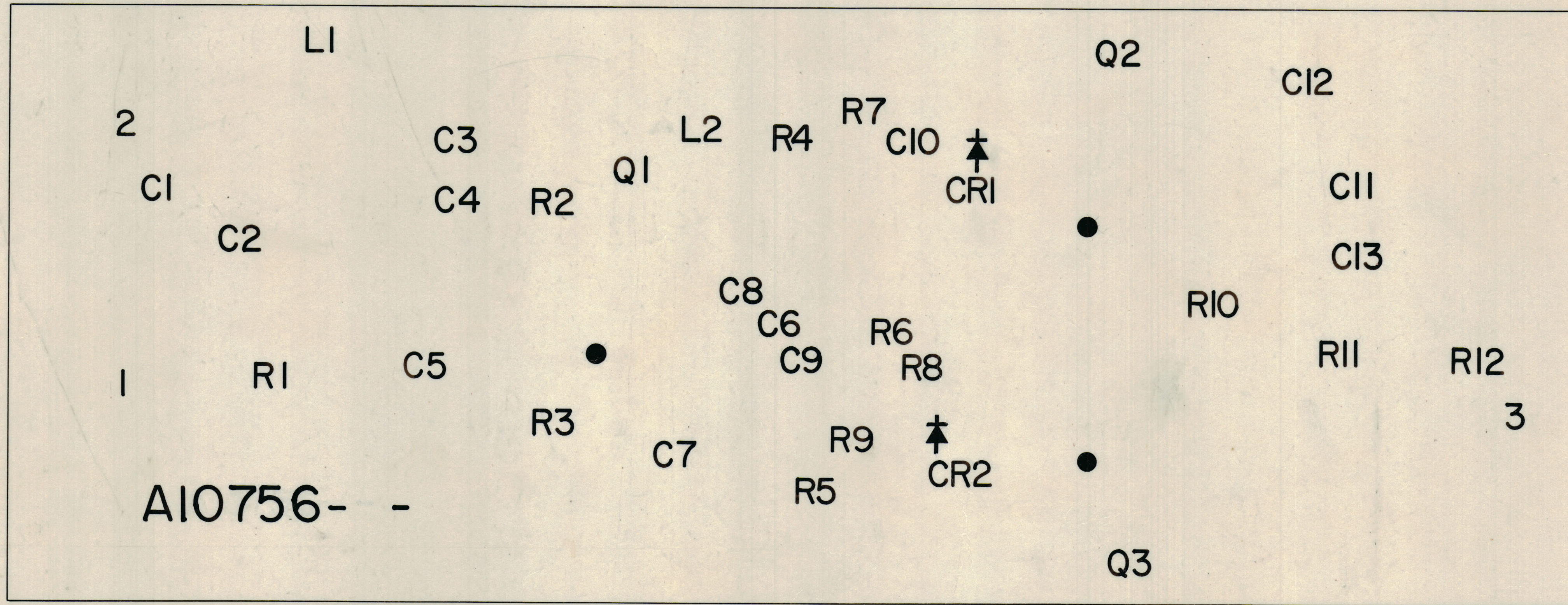
IF IT IS FOUND DESIRABLE TO CHANGE ANY TOLERANCE OR OTHER DETAIL SPECIFIED ON THIS DRAWING NOTIFY THE PURCHASER PROMPTLY.

MAXIMUM ALLOWABLE TOLERANCES HAVE BEEN DETERMINED AND DEVIATIONS WILL BE CAUSE FOR REJECTION. REMOVE ALL BURRS AND SHARP EDGES.

ISSUE	ITEM	CHANGED FROM	DATE	CN. NO.	DRAFTS	CHECKER	ENG. APP.
0		REL TO PROD	JULY 22/69			AP	

A10756-3

REQ	ITEM	PART NO.	DESCRIPTION	SYMBOL
-----	------	----------	-------------	--------



SCALE 4:1
 NEGATIVE 1:1
 REF. TOP PATTERN

LETTERING NOTES:

- 1) WHITE EPOXY PAINT
- 2) HEIGHT OF CHARACTERS .093 ⁺⁰¹⁵ ₋₀₀₀
- 3) WIDTH OF LINES .015 ⁺⁰¹⁰ ₋₀₀₀
- 4) AS PER TMC SPEC. S-727
- 5) DOT 1/16 DIA.
- 6) HEIGHT OF BOARD NO. CHARACTERS .125 ⁺⁰¹⁵ ₋₀₀₀
- 7) LINE WIDTH OF BOARD NO CHARACTERS .020 ⁺⁰¹⁰ ₋₀₀₅

TOLERANCES UNLESS OTHERWISE SPECIFIED SCALE: 4:1

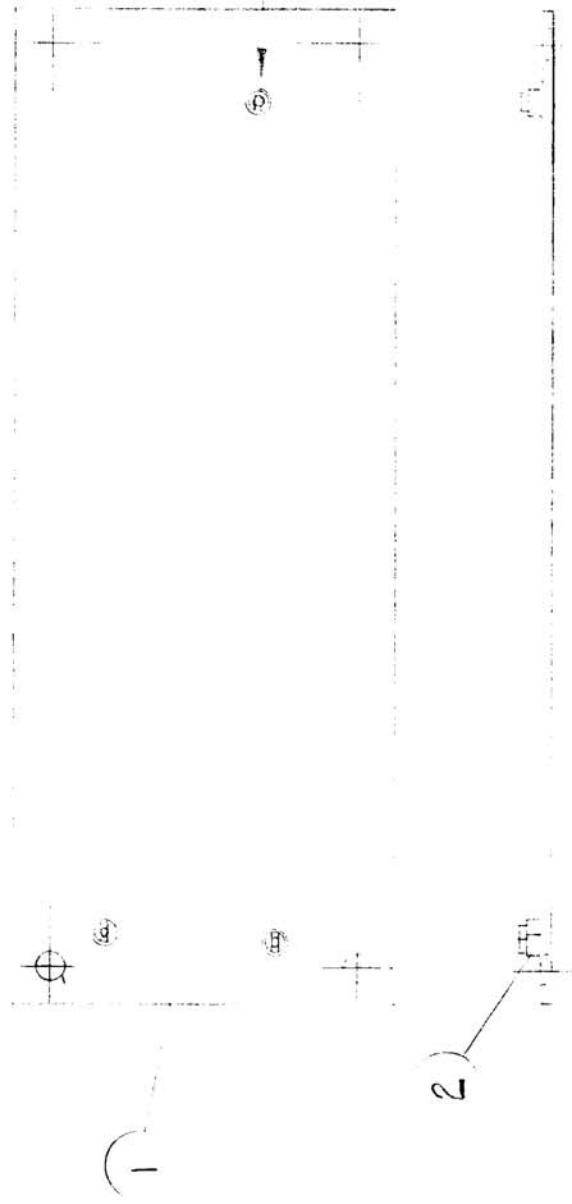
ALL OTHERS	DEC. DIM. ± .005	FRAC. DIM. ± 1/64	ANGULAR DIM. ± 0° 30'	DRILL, PUNCH, COMMERCIAL STOCK SIZES AND MANUFACTURERS TOLERANCES ARE NOT INCLUDED
------------	------------------	-------------------	-----------------------	--

MODEL	PROJECT NO.	ASSY. NO.	DATE
MAC-1	074-69		7-16-69

STOCK SIZE		TMC (Canada) LIMITED OTTAWA ONTARIO	
MATERIAL		PC. ASS'Y OUTPUT	
WEIGHT PER PC			
TYPE & TEMPER			
DRAWN	ELEC. DES. APP.	MECH. DES. APP.	
HEAT TREAT SPEC.		FINISH & SPEC. NO.	
CHECKED		FINAL APPROVAL	
		Sht 3 of 5 A10756-3	

A 111564

ISSUE	ITEM	CHANGED FROM	DATE	CH. NO.	DRAFTS	CHECKER	ENB. APP.	REQ.	ITEM	PART NO.	DESCRIPTION	SYMBOL
Ø		REL TO PROD	JULY 22/69		AP			1		A10756-3	P.C. ASSY OUTPUT	
								2		A100015-3	TEMP. S. (DOCUMENTATION)	



(USE 1/16" (2) AS
MATERIAL FUNCTION
OF SLOTT)

MODEL		PROJECT NO.	ASSY. NO.	DATE
HAC-1		074/63		7-16-69

STOCK SIZE		WEIGHT PER PC.

MATERIAL	TYPE & TEMPER	ELEC. DES. APP.	MECH. DES. APP.

HEAT TREAT. SPEC.		FINISH & SPEC. NO.	

TOLERANCES		SCALE	
DEC. DIM. ± .X = .05		UTS	
FRAC. DIM. ± 1/64 .XX = .01			
ANGULAR DIM. ± 0' 30' .XXX = .005			

USED ON	
TMC (Canada) LIMITED OTTAWA ONTARIO	

DRAWN		CHECKED	
SR			

P.C. ASSY OUTPUT	
(SUB)	

FINAL APPROVAL	
SHT 4 of 5	A-10156-4 Ø

A10756-5

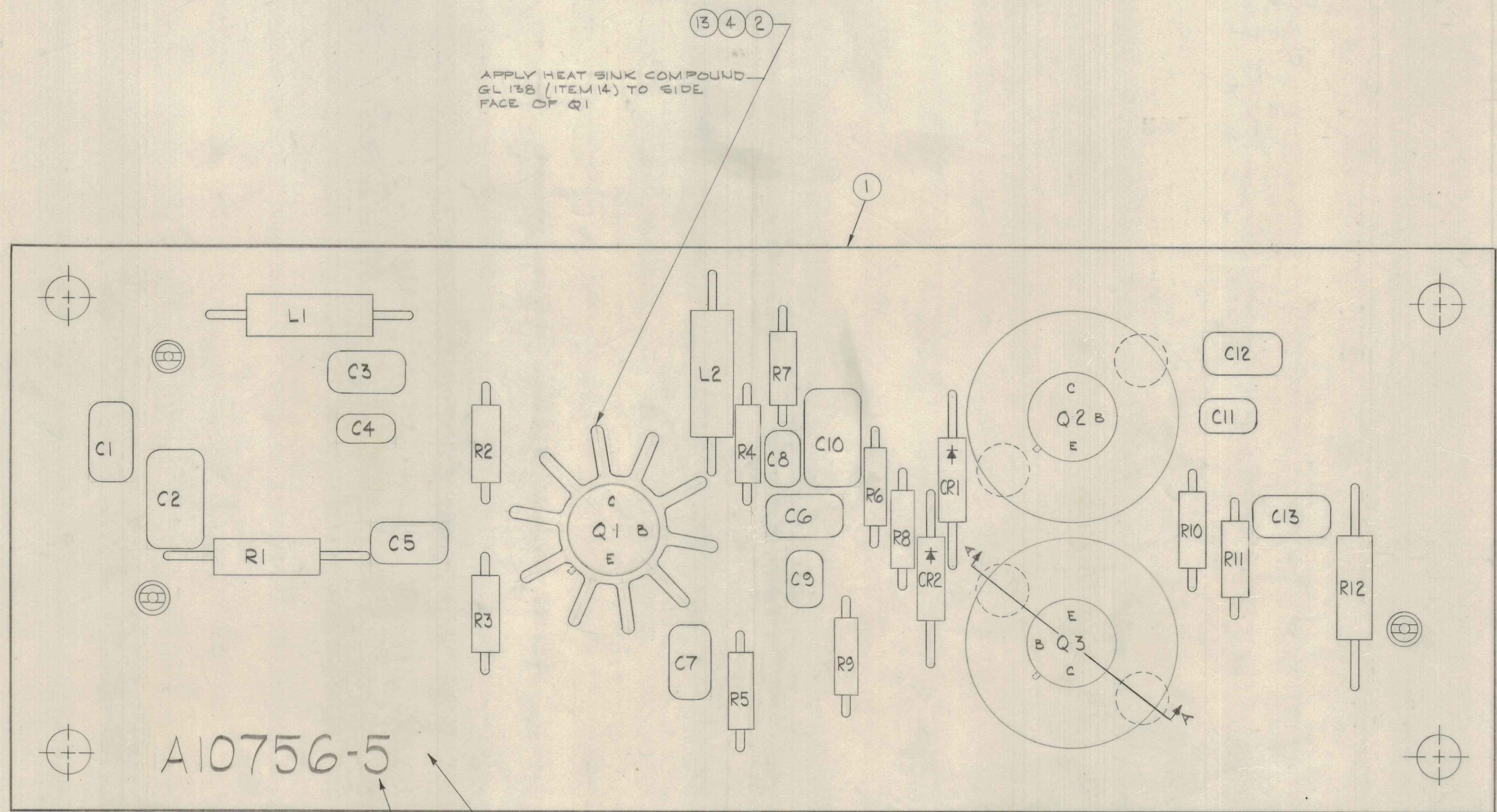
IF IT IS FOUND DESIRABLE TO CHANGE ANY TOLERANCE OR OTHER DETAIL SPECIFIED ON THIS DRAWING NOTIFY THE PURCHASER PROMPTLY.						DIMENSIONS IN INCHES UNLESS OTHERWISE SPECIFIED	
MAXIMUM ALLOWABLE TOLERANCES HAVE BEEN DETERMINED AND DEVIATIONS WILL BE CAUSE FOR REJECTION. REMOVE ALL BURRS AND SHARP EDGES.							
ISSUE	ITEM	CHANGED FROM	DATE	CH. NO.	DRAFTS	CHECKER	ENG. APP.
1		REL TO PROD	JULY 22/69		AP		

REQ.	ITEM	PART NO.	DESCRIPTION	SYMBOL
1	1	A10756-5	PC ASSY OUTPUT	
1	2	HD-10002-7	HEAT SINK	
2	3	HD-10004	HEAT SINK	
3	4	2N3006	TRANSISTOR	Q1, Q2
12	5	100K	RESISTOR	
	6			
13	7		CAPACITOR	
2	8		DIODE	CR1, CR2
2	9		COIL RF	L1, L2
4	10	FW 02 H3N	WASHER - FLAT	
4	11	LWS 02 MRU	WASHER - LOCK - SPLIT	
4	12	SCR P0256BUN4	SCREW	
1	13	PX-629-1	PAD TRANSISTOR MTF	
AR	14	GL-138	COMPOUND SILICONE H.S.	

R1, R2, R3, R4, R5, R6, R7, R8, R9, R10, R11, R12

C1, C2, C3, C4, C5, C6, C7, C8, C9, C10, C11, C12, C13

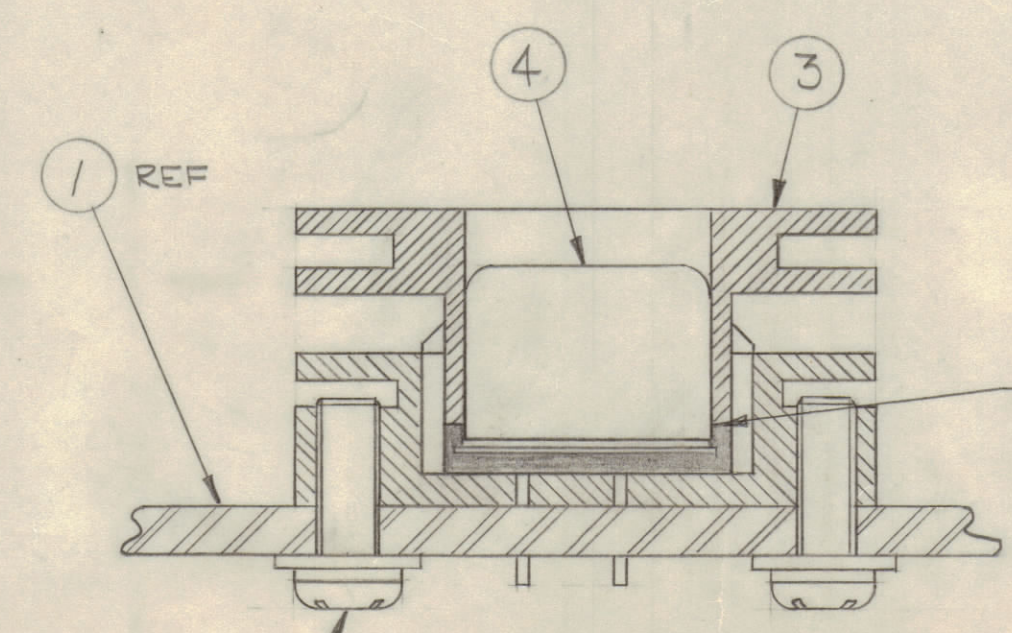
APPLY HEAT SINK COMPOUND - GL 138 (ITEM 14) TO SIDE FACE OF Q1



A10756-5

ADD DASH NO. TMC PART NO. COMPLETE WITH LATEST REV LETTER

NOTE: FOR ELECTRICAL PART NO'S REF. TO NUMERICAL PARTS LIST



APPLY HEAT SINK COMPOUND - GL 138 (ITEM 14) TO BOTH FACES OF TRANSISTOR FLANGE

SECTION A-A TYPICAL ASS'Y FOR Q2 & Q3

TOLERANCES UNLESS OTHERWISE SPECIFIED		SCALE: 4:1
ALL DEC. DIM. ± .XX = .05	DRILL, PUNCH, COMMERCIAL STOCK SIZES AND MANUFACTURERS TOLERANCES ARE NOT INCLUDED	
OTHERS FRACTIONAL DIM. ± 1/32 .XX = .01		
ANGULAR DIM. ± 0° 30' .XXX = .005		

MODEL	PROJECT NO.	ASSY. NO.	DATE
MAC-1	074169		7-16-69

STOCK SIZE		TMC (Canada) LIMITED	
MATERIAL		OTTAWA ONTARIO	
WEIGHT PER PC		PRINTED CIRCUIT ASSY	
TYPE & TEMPER		OUTPUT	
DRAWN		ELEC. DES. APP. MECH. DES.	
HEAT TREAT SPEC.		CHECKED FINAL APPROVAL	
FINISH & SPEC. NO.		Sht 5 of 5 A10756	