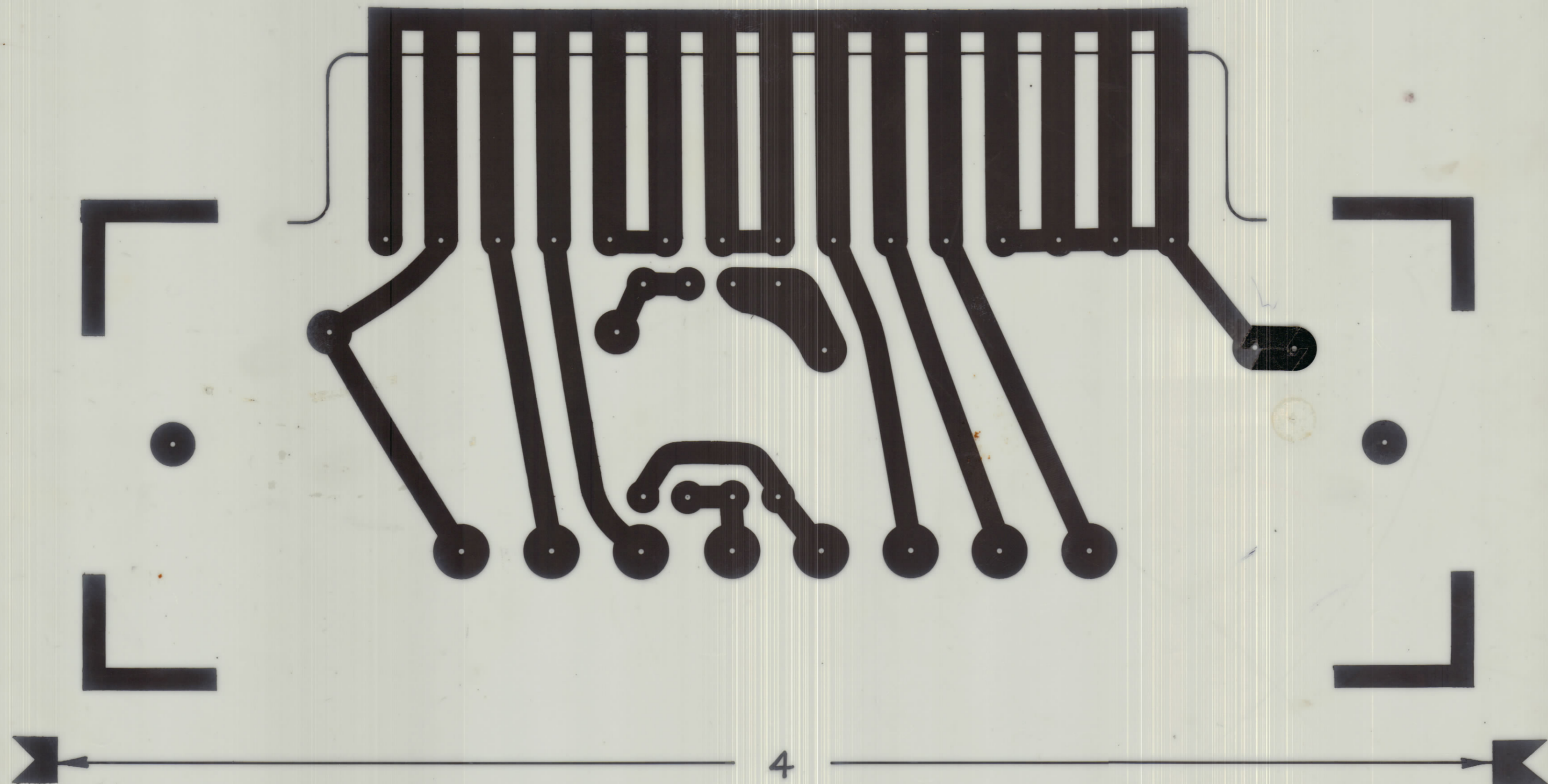


REVISIONS							
ZONE	SYM	DESCRIPTION	DATE	E.M.N. NO.	DRAFT	CHKD	APPD
Ø		REL. TO PROD.	DEC 6/67		RPL	J	WA
A		REV AS PER CEMN	JAN 30/68	339	AD	J	J
B		REV AS PER CEMN	FEB 20/68	347	RPL	J	J
C		REVISED PER CEMN.	MAR 10/70	732	J	J	J
D		REVISED PER CEMN	DEC 29/70	886	R	J	J
E		REVISED PER CEMN	1 SEPT 71	1054	LB	J	J
F		REVISED PER CEMN	4 JAN 73	1209	AM	Hcl	son



SCALE 4:1

NEGATIVE 1:1

BOTTOM PATTERN

(SEE A10672-2 FOR PLATING SPECIFICATIONS)

MODEL	062/68	PROJECT NO.	ASSY. NO.	DATE	AUG 16/67	TMC (Canada) LIMITED OTTAWA ONTARIO	
USED ON					STOCK SIZE	POWER SUPPLY BD. AC (ETCHING)	
MAXIMUM ALLOWABLE TOLERANCES HAVE BEEN DETERMINED AND DEVIATIONS WILL BE CAUSE FOR REJECTION. REMOVE ALL BURRS AND SHARP EDGES					MATERIAL	WEIGHT PER PC.	RPL
IF IT IS FOUND DESIRABLE TO CHANGE ANY TOLERANCE OR OTHER DETAIL SPECIFIED ON THIS DRAWING NOTIFY THE PURCHASER PROMPTLY.					TYPE & TEMPER		DRAWN
TOLERANCES					HEAT TREAT. SPEC		ELEC. DES. APP.
SCALE					FINISH & SPEC. NO.		MECH. DES. APP.
ALL DIM. ±					DIMENSIONS IN INCHES		FINAL APPROVAL
OTHERS					UNLESS OTHERWISE SPECIFIED		
FRAC. DIM. ±					DRILL PUNCH COMMERCIAL STOCK		
ANGULAR DIM. ±					SIZES AND MANUFACTURERS		
					TOLERANCES ARE NOT INCLUDED.		
SHEET 1 of 7 A10672-1						F	

REVISIONS							
ZONE	SYM	DESCRIPTION	DATE	E.M.N. NO.	DRAFT	CHKD	APPD
Ø		REL. TO PROD.	DEC 6/67		RPL	W	W
A		REV. AS PER CEMN	JAN 30/68	339	AP	W	W
B		REV AS PER CEMN	FEB 20/68	347	RPL	W	W
C		REVISED PER CEMN	MAR 10/70	732	RPL	W	W
—	D	REVISED PER CEMN	DEC 29/70	886	RPL	W	W
	E	REVISED PER CEMN	1 SEPT 71	1054	LB	W	W
	F	REVISED PER CEMN	4 JAN 73	1209	PIM	HCL	SOW



SCALE 4:1

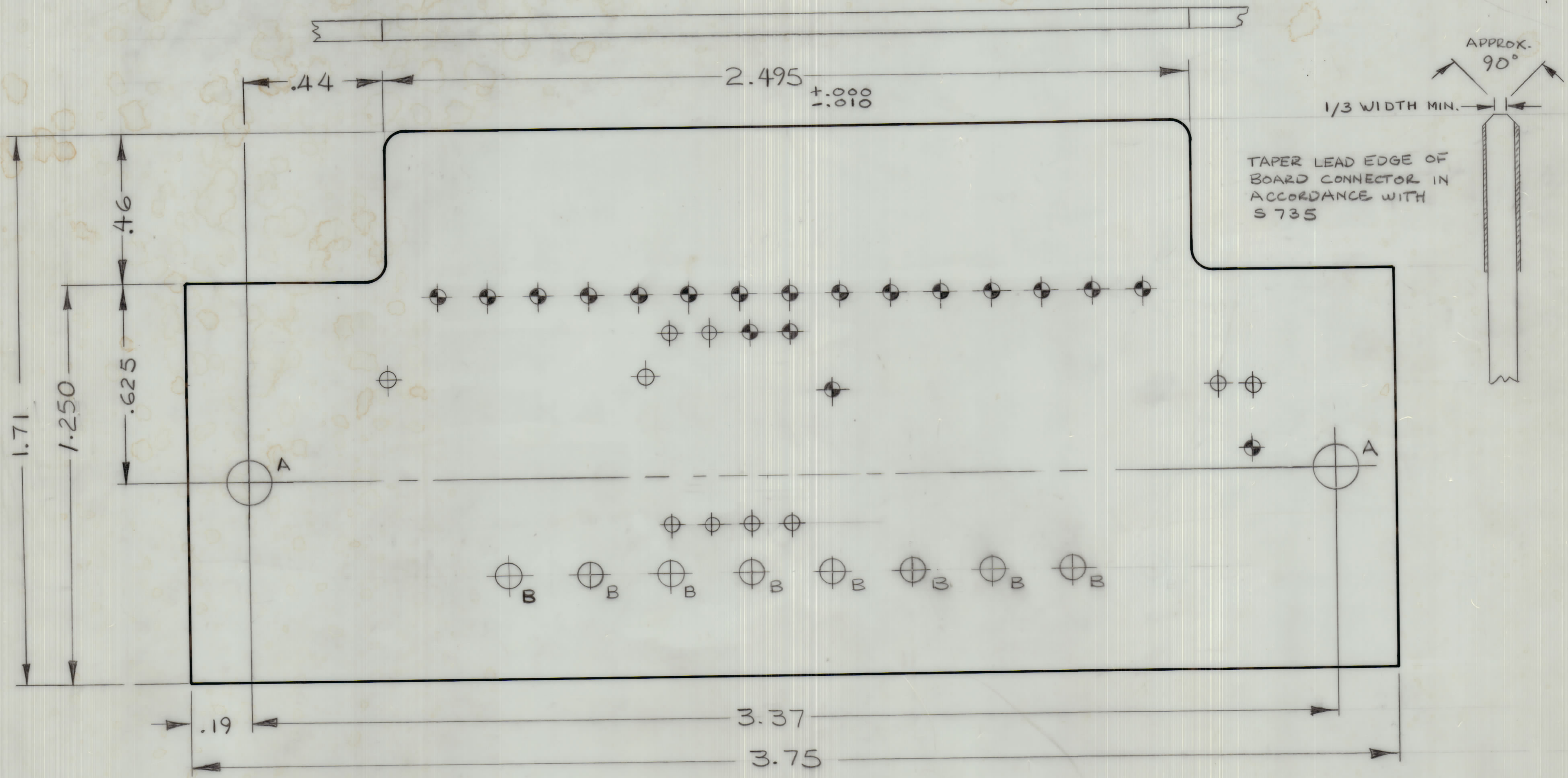
NEGATIVE 1:1

TOP PATTERN (COMPONENT SIDE)

MODEL		PROJECT NO. 062/68		ASSY. NO.		DATE AUG 16/67		STOCK SIZE		TMC (Canada) LIMITED OTTAWA ONTARIO	
USED ON								MATERIAL		POWER SUPPLY BD AC (ETCHING)	
MAXIMUM ALLOWABLE TOLERANCES HAVE BEEN DETERMINED AND DEVIATIONS WILL BE CAUSE FOR REJECTION. REMOVE ALL BURRS AND SHARP EDGES.								WEIGHT PER PC.		DRAWN RPL	
IF IT IS FOUND DESIRABLE TO CHANGE ANY TOLERANCE OR OTHER DETAIL SPECIFIED ON THIS DRAWING NOTIFY THE PURCHASER PROMPTLY.								TYPE & TEMPER		ELEC. DES. APP. W	
TOLERANCES				SCALE				HEAT TREAT. SPEC.		MECH. DES. APP. W	
ALL OTHERS		DEC. DIM. ±		DIMENSIONS IN INCHES UNLESS OTHERWISE SPECIFIED		FINISH & SPEC. NO.		CHECKED 30		FINAL APPROVAL W	
		FRAC. DIM. ±		DRILL PUNCH, COMMERCIAL STOCK SIZES AND MANUFACTURERS TOLERANCES ARE NOT INCLUDED.				SHEET 2 OF 7		A10672-1 F	
		ANGULAR DIM. ±									

- NOTES:**
- (1) MATERIAL: PLASTIC SHEET LAMINATED COPPER CLAD, FL-GE062 C2/2
 - (2) CONTACTS ON EDGE BOARD CONNECTOR TO BE PLATED WITH A MINIMUM OF .0001 OF GOLD
 - (3) BALANCE ON CONDUCTIVE PATTERN TO BE:
 - (A) PLATED WITH A MINIMUM OF .0003 TIN LEAD
 - (B) COATED WITH A MINIMUM OF .0003 SOLDER ON BOTTOM PATTERN ONLY
 - (4) TO BE IN ACCORDANCE WITH TMC SPEC. S735

REVISIONS						
ZONE	SYM	DESCRIPTION	DATE	E.M.N. NO.	DF FT	CHKD APPD
Ø		REL. TO PROD.	DEC 6/67		RPL	W W
A		REV. AS PER CEMN	JAN 30/68	339	AP	W W
B		REV AS PER CEMN	FEB 20/68	347	RPL	W W
C		REVISED PER CEMN	MAR 6/70	732	W	W
D		REVISED PER CEMN	DEC 29/70	886	RW	W
E		REVISED PER CEMN	1 SEPT 71	1054	LB	W
F		REVISED PER CEMN	4 JAN 73	1209	AWW	W ACS SOW



INDICATES INTERFACIAL CONNECTION DIA. IN HOLE TABLE INDICATES MIN DIA. AFTER PLATING OR EYLETING AS PER SUPPLIERS OPTION

(REF: A10672-1 FOR ETCHING)

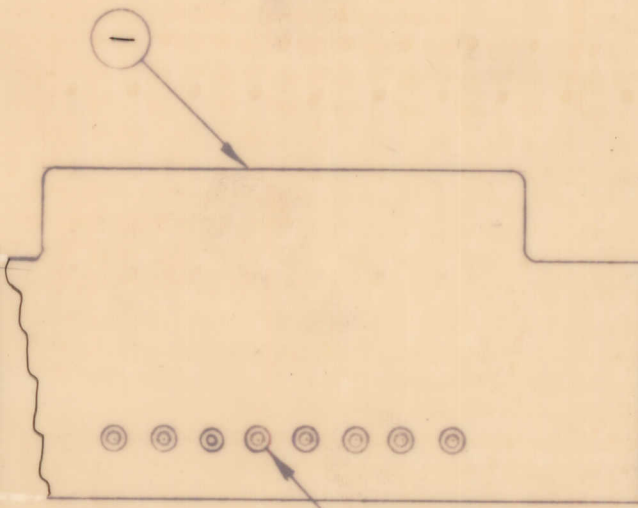
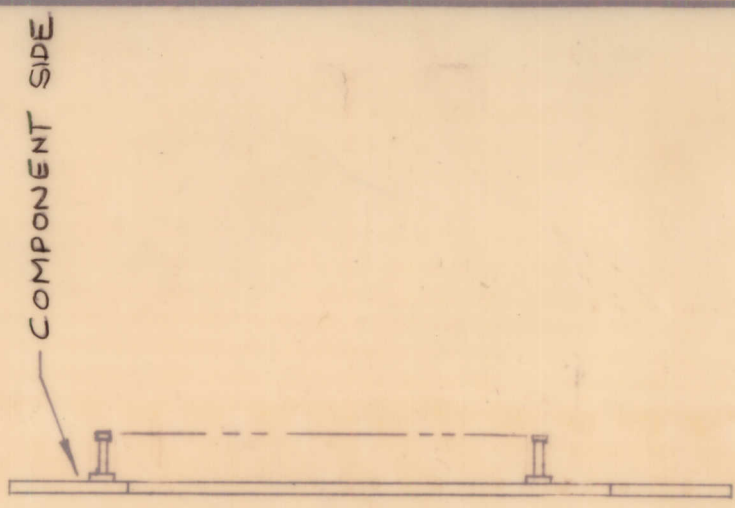
HOLE	DESCRIPTION	REQ'D
A	9/64 DIA.	2
B	.078 DIA.	8
UNMARKED	.052 DIA.	29

SCALE 4:1

REF. BOTTOM PATTERN

MODEL		062/68	PROJECT NO.	DATE	AUG 16/67	STOCK SIZE		TMC (Canada) LIMITED OTTAWA ONTARIO	
ASSY. NO.			USED ON			MATERIAL		POWER SUPPLY BD. AC (MACHINING)	
WEIGHT PER PC.			MAXIMUM ALLOWABLE TOLERANCES HAVE BEEN DETERMINED AND DEVIATIONS WILL BE CAUSE FOR REJECTION. REMOVE ALL BURRS AND SHARP EDGES			SEE NOTE 1		DRAWN RPL	
TYPE & TEMPER			IF IT IS FOUND DESIRABLE TO CHANGE ANY TOLERANCE OR OTHER DETAIL SPECIFIED ON THIS DRAWING NOTIFY THE PURCHASER PROMPTLY.			HEAT TREAT. SPEC.		ELEC. DES. APP. MECH. DES. APP.	
TOLERANCES			SCALE			FINISH & SPEC. NO.		CHECKED	
DEC. DIM. ±		.X = .05	DIMENSIONS IN INCHES UNLESS OTHERWISE SPECIFIED			SHEET 3 OF 7		FINAL APPROVAL	
FRAC. DIM. ± 1/64		.XXX = .01	DRILL PUNCH, COMMERCIAL STOCK SIZES AND MANUFACTURERS TOLERANCES ARE NOT INCLUDED.			A10672-2		W	
ANGULAR DIM. ± 0° 30'		.XXX = .005				F			

ISSUE	ITEM	CHANGED FROM	DATE	CH. NO.	DRAFTS	CHECKER	ENG. APP.	REQ.	ITEM	PART NO.	DESCRIPTION	SYMBOL
D		REL. TO PRO.	DEC 6/67		RPL	<i>[Signature]</i>	<i>[Signature]</i>	1	1	A10672-3	POWER SUPPLY BD	AC
A		REV AS PER CEMN	JAN 28/68	339	AP	<i>[Signature]</i>	<i>[Signature]</i>	8	2	TE 127-2	TERMINAL STUD	
B		REV AS PER CEMN	FEB 20/68	347	RPL	<i>[Signature]</i>	<i>[Signature]</i>					
C		REVISED PER CEMN	MAR 6/70	732	<i>[Signature]</i>	<i>[Signature]</i>	<i>[Signature]</i>					
D		REV PER CEMN	DEC 29/70	886	RW	<i>[Signature]</i>	<i>[Signature]</i>					
E		REVISED PER CEMN	1 SEPT 71	1054	LB	AR.	<i>[Signature]</i>					
F		REVISED PER CEMN	4 JAN 73	1209	PHOT	HGS	SON					



NOTE:
MOUNT ITEM'S 2 IN ALL
"B" HOLES

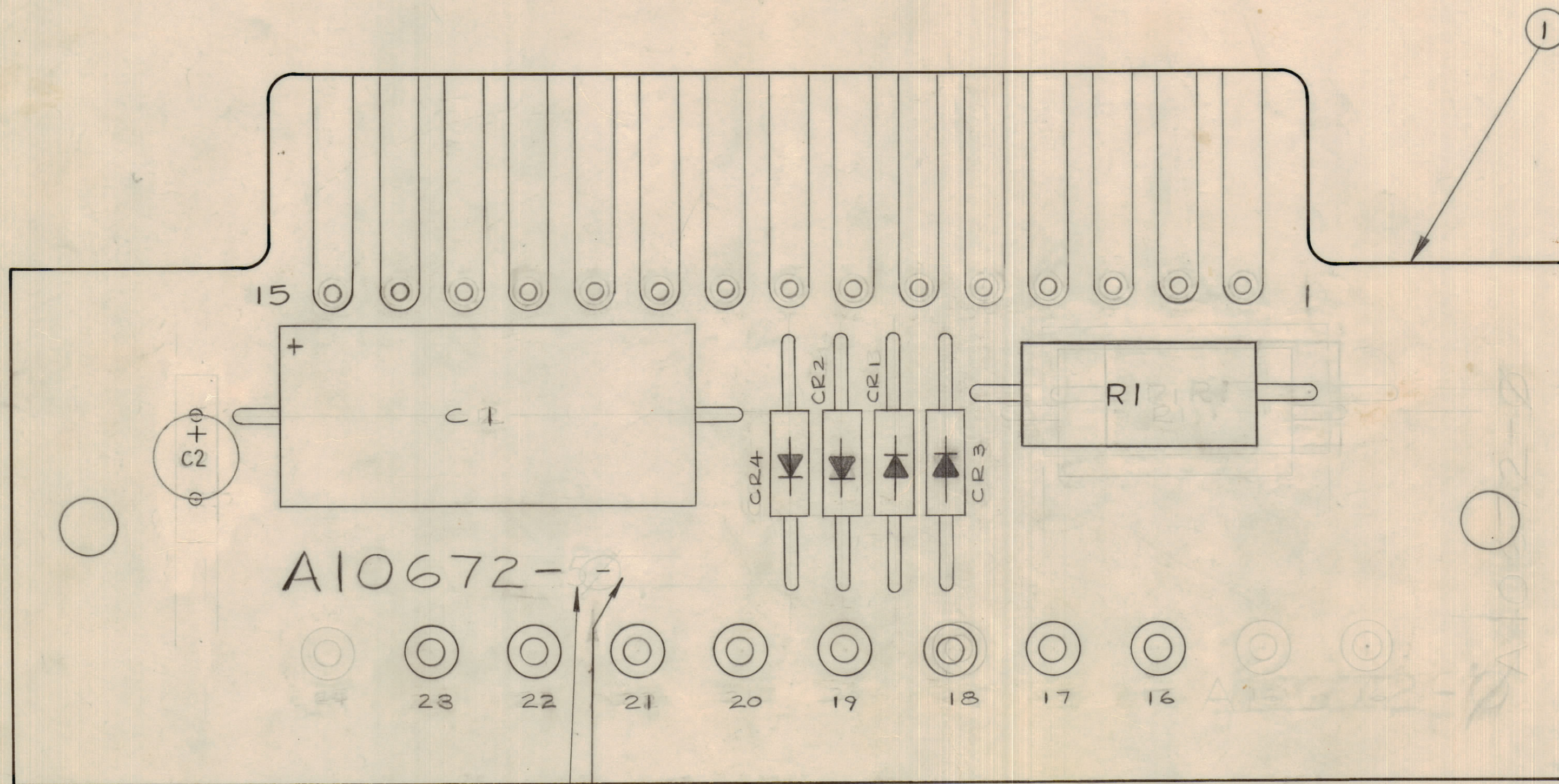
MODEL		PROJECT NO.		ASSY. NO.		DATE	
		062/68				OCT	
MAXIMUM ALLOWABLE TOLERANCES HAVE BEEN DETERMINED AND DEVIATIONS WILL BE CAUSE FOR REJECTION. REMOVE ALL BURRS AND SHARP EDGES				IF IT IS FOUND DESIRABLE TO CHANGE ANY TOLERANCE OR OTHER DETAIL SPECIFIED ON THIS DRAWING NOTIFY THE PURCHASER PROMPTLY.			
TOLERANCES				SCALE			
DEC. DIM. ±		FRAC. DIM. ±		ANGULAR DIM. ±		DIMENSIONS IN INCHES UNLESS OTHERWISE SPECIFIED	
ALL OTHERS						DRILL, PUNCH, COMMERCIAL STOCK SIZES AND MANUFACTURERS TOLERANCES ARE NOT INCLUDED.	
STOCK SIZE		MATERIAL		WEIGHT PER PC		TYPE & TEMPER	
DRAWN		CHECKED		ELEC. DES. APP.		MECH. DES. APP.	
RPL				<i>[Signature]</i>		<i>[Signature]</i>	
TMC (Canada) LIMITED		OTTAWA		ONTARIO			
POWER SUPPLY BD		(SUB ASS'Y)		AC			
SHEET 5 of 7		A10672-4		F			

IF IT IS FOUND DESIRABLE TO CHANGE ANY TOLERANCE OR OTHER DETAIL SPECIFIED ON THIS DRAWING NOTIFY THE PURCHASER PROMPTLY.		DIMENSIONS IN INCHES UNLESS OTHERWISE SPECIFIED					
MAXIMUM ALLOWABLE TOLERANCES HAVE BEEN DETERMINED AND DEVIATIONS WILL BE CAUSE FOR REJECTION. REMOVE ALL BURRS AND SHARP EDGES.							
ISSUE	ITEM	CHANGED FROM	DATE	CN. NO.	DRAFTS	CHECKER	ENG. APP.
Ø		REL. TO PROD.	DEC 6/67		RPL		
A		REV. AS PER CEMN	JAN 30/68	339	AP		
B		REV AS PER CE	FEB 20/68	347	RPL		
C		REVISED PER CEMN	MAR 6/70	732			
D		REVISED PER CEMN	DEC 29/70	886	RW		
E		REVISED PER CEMN	1 SEPT 71	1054	LB		
F		REVISED PER CEMN	4 JAN 73	1209	RMM	HES	SOW

REQ.	ITEM	PART NO.	DESCRIPTION	SYMBOL
1	1	A10672-4	POWER SUPPLY BD.	
1	2		RESISTOR FIXED, W. LEAD	R1
2	3		CAPACITOR, FILM	C1, C2
4	4		DIODE	

CR1, CR2, CR3, CR4

NOTE: REF TO MATERIAL LIST FOR ELECTRICAL COMPONENT PART NO'S.



THE LATEST REV. LETTER TO TMC PART NO.

A10672-5 F

REFERENCE SCHEMATIC CK10544 (STR-5)

ADD LATEST REV. LETTER TO TMC PART NO.
ADD ASSY DASH NO.

TOLERANCES		SCALE:
ALL OTHERS	DEC DIM ± FRAC DIM ± ANGULAR DIM ±	DRILL, PUNCH, COMMERCIAL STOCK SIZES AND MANUFACTURERS TOLERANCES ARE NOT INCLUDED.

MODEL	PROJECT NO.	ASSY. NO.	DATE
	062/68		OCT 25/67

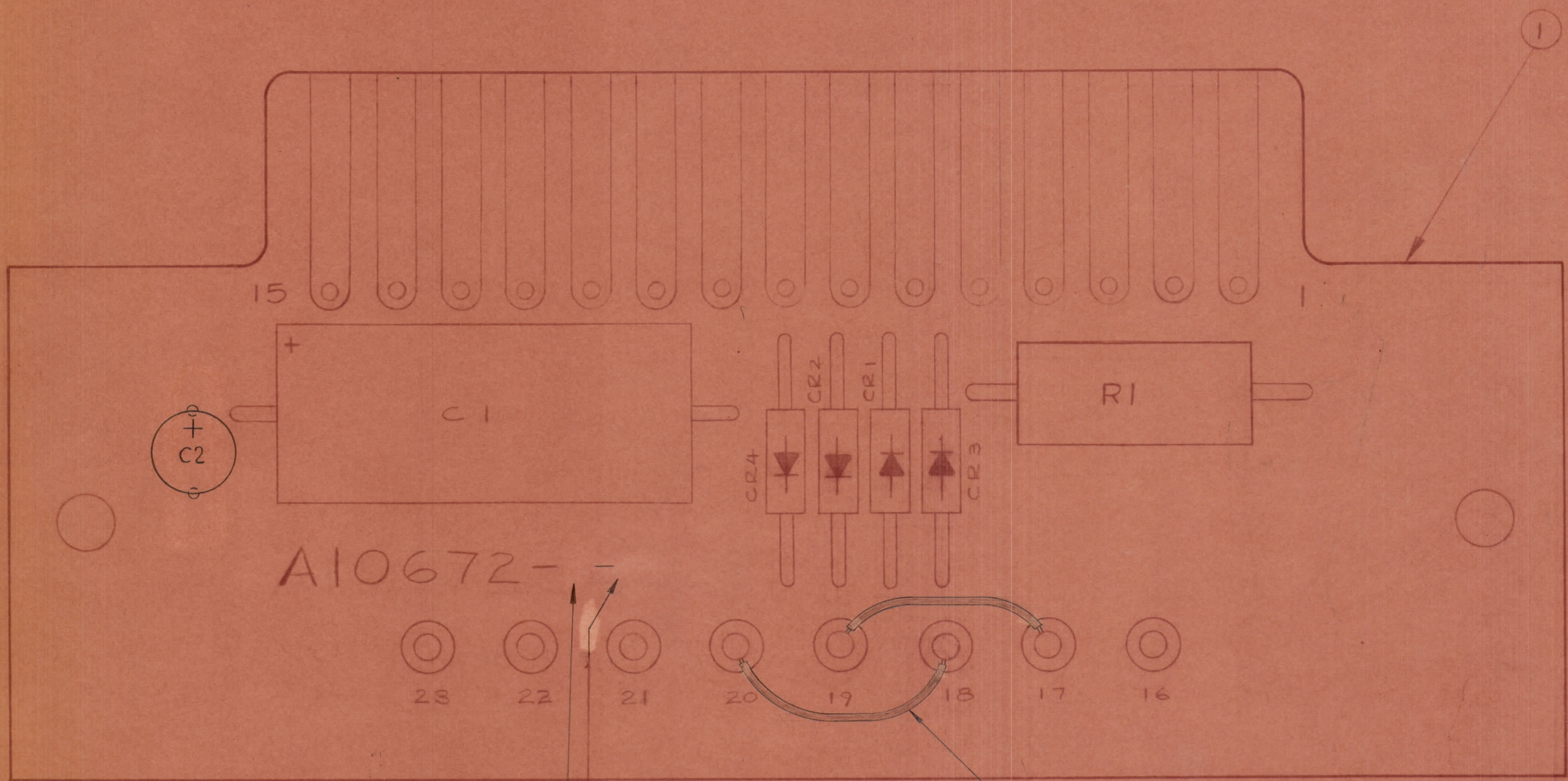
TMC (Canada) LIMITED OTTAWA ONTARIO			
POWER SUPPLY, PC BD. AC (FINAL ASS'Y)			
STOCK SIZE		RPL	
MATERIAL	WEIGHT PER PC.	DRAWN	ELEC. DES. APP. MECH. DES. APP.
TYPE & TEMPER			
HEAT TREAT. SPEC.	CHECKED	FINAL APPROVAL	
FINISH & SPEC. NO.	SHEET 6 OF 7 A10672-5 F		

IF IT IS FOUND DESIRABLE TO CHANGE ANY TOLERANCE OR OTHER DATA SPECIFIED ON THIS DRAWING NOTIFY THE PURCHASER PROMPTLY.		DIMENSIONS IN INCHES UNLESS OTHERWISE SPECIFIED.					
MAXIMUM ALLOWABLE TOLERANCES HAVE BEEN DETERMINED AND DEVIATIONS WILL BE SAID TO BE REJECTION. REMOVE ALL BURRS AND SHARP EDGES.							
REV.	ITEM	CHANGED FROM	DATE	EN. NO.	DRAFTS	CHECKER	ENG. APP.
E		ADDED PER CEMN	SEPT 71	1054	LB	JR	
F		REVISED PER CEMN	4 JAN 73	1209	RAM	HEB	30W

REQ.	ITEM	PART NO.	DESCRIPTION	SYMBOL
1	1	A10672-4	POWER SUPPLY BD.	
1	2		RESISTOR FIXED	R1
2	3		CAPACITOR	C1, C2
4	4		DIODE	
X	5	PX104-7-034	INSULATION SLEEVING, ELECT.	
X	6	WL-100-6-1	WIRE BUS-BAR, TINNED	

CR1, CR2, CR3, CR4 →

NOTE: REF TO MATERIAL LIST FOR ELECTRICAL COMPONENT PART NO.'S.



A10672-6 F

REFERENCE SCHEMATIC CK 10555 (SMR-5)

ADD LATEST REV. LETTER TO TMC PART NO.
ADD ASSY DASH NO. (5) (6) TYP

TOLERANCES		RECALL
ALL DIM.	±0.005	DRILL PUNCH COMMERCIAL STOCK
ANGULAR DIM.	±0.010	SIZES AND MANUFACTURERS
		DIMENSIONS ARE NOT INCLUDED

NO. 1	062/68	1 SEPT 71
PROJECT NO.	ASSY. NO.	DATE
USED ON		

STOCK SIZE		TMC (Canada) LIMITED OTTAWA ONTARIO	
MATERIAL		POWER SUPPLY, PC BD AC (FINAL ASSY)	
WEIGHT PER PC		L. BROWN	
TYPE & TEMPER		DRAWN	ELEC. DES. APP.
HEAT TREAT. SPEC.		CHECKED	FINAL APPROVAL
FINISH & SPEC. NO.		SHEET 7 of 7 A10672-6 F	