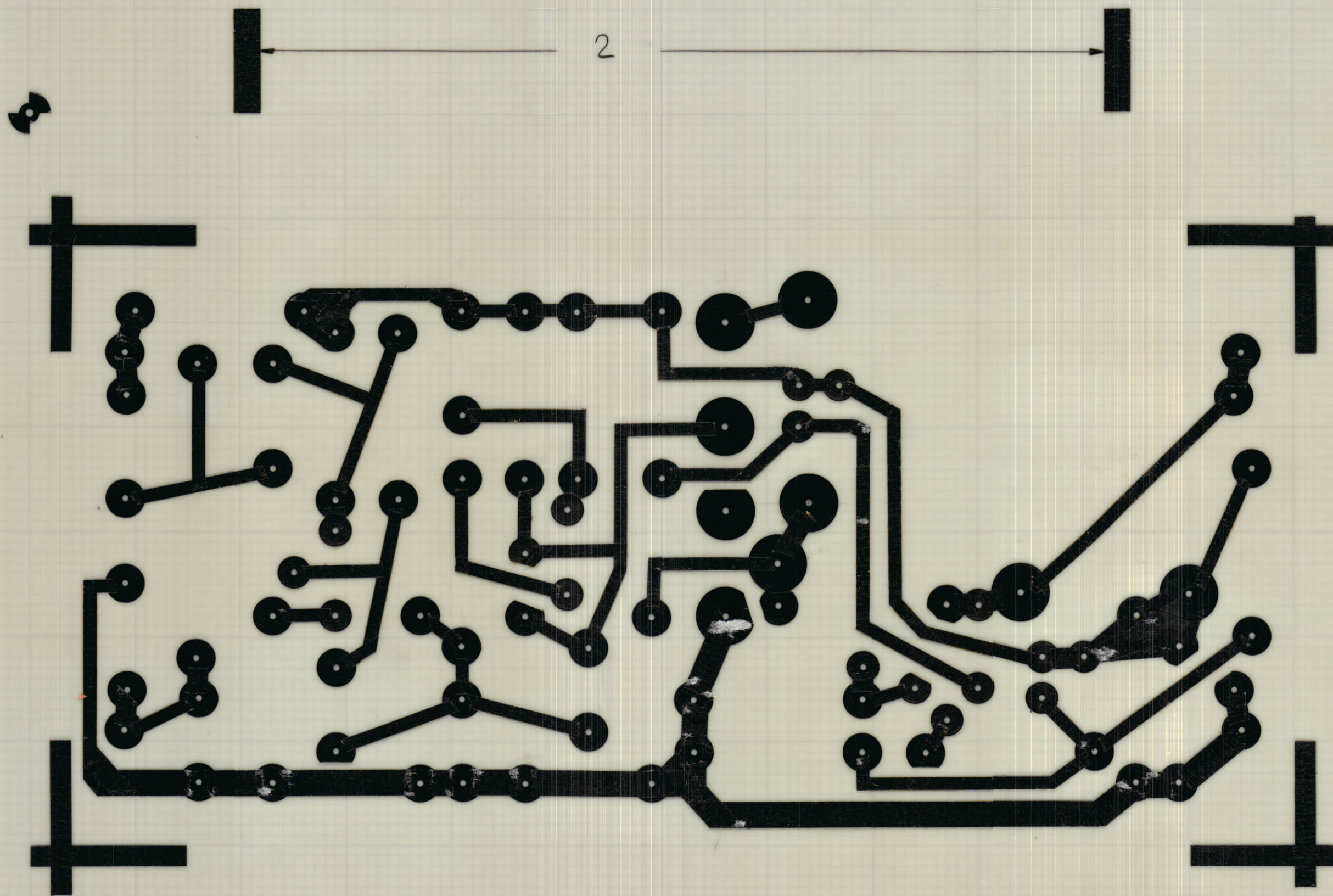


IF IT IS FOUND DESIRABLE TO CHANGE ANY TOLERANCE OR OTHER DETAIL SPECIFIED ON THIS DRAWING NOTIFY THE PURCHASER PROMPTLY.		DIMENSIONS IN INCHES UNLESS OTHERWISE SPECIFIED					
MAXIMUM ALLOWABLE TOLERANCES HAVE BEEN DETERMINED AND DEVIATIONS WILL BE CAUSE FOR REJECTION. REMOVE ALL BURRS AND SHARP EDGES.							
ISSUE	ITEM	CHANGED FROM	DATE	CH. NO.	DRAFTS	CHECKER	ENG. APP.
B		REDRAWN PER CEMN 1087	NOV 18/71	1087	PL	[Signature]	[Signature]

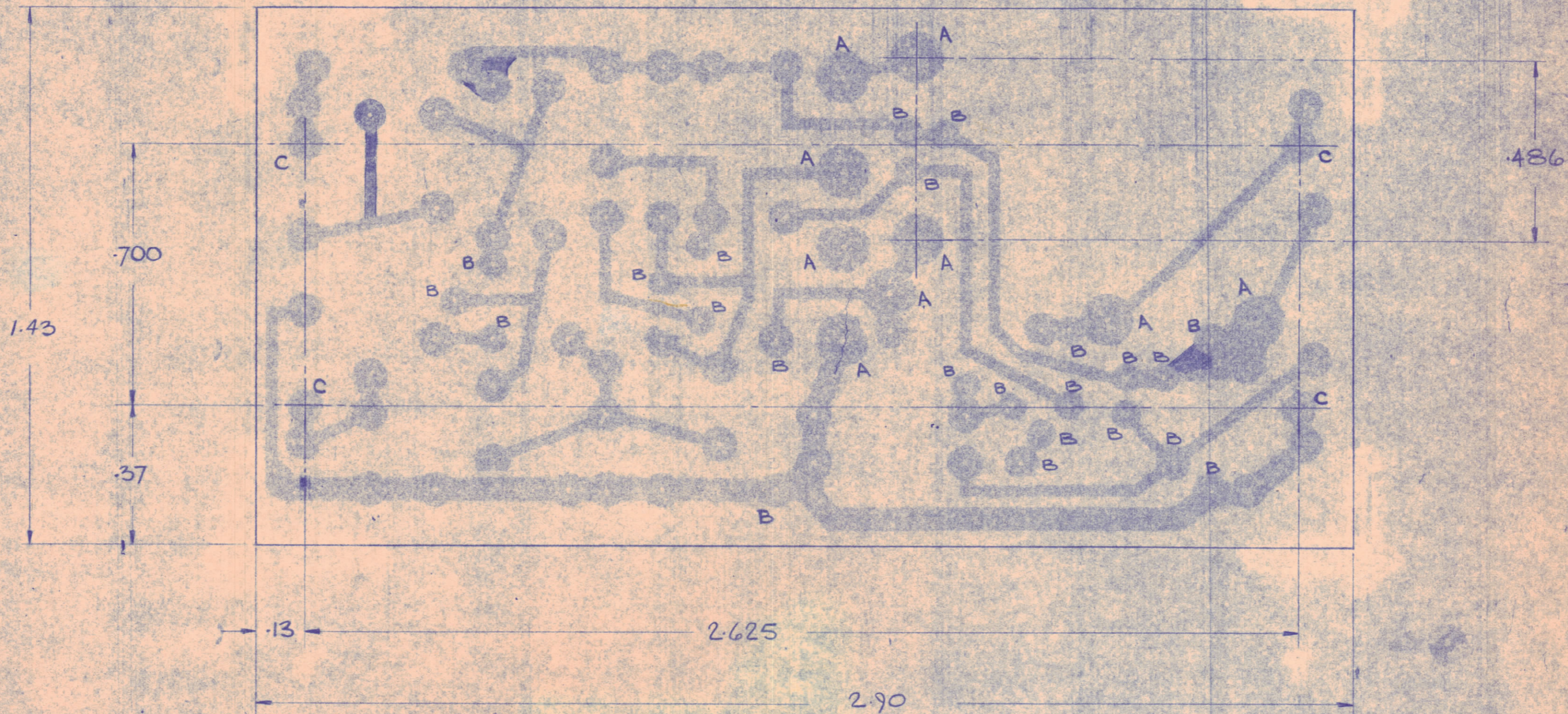


A-10638-1 B

FOIL SIDE
SCALE 4:1

				TMC (Canada) LIMITED OTTAWA ONTARIO		
				P.C. BD., OSCILLATOR ETCHING		
STOCK SIZE				P. LINDSAY		
MATERIAL				DRAWN		
WEIGHT PER PC.				ELEC. DES. APP.		
TYPE & TEMPER.				MECH. DES. APP.		
HEAT TREAT. SPEC.				A PROCTOR		
FINISH & SPEC. NO.				CHECKED		
MODEL				FINAL APPROVAL		
TCXO	068/67	A10638-5	NOV. 18/71	SHEET 1 of 4 A10638-1 B		
PROJECT NO.	ASSY. NO.	DATE				
USED ON						

USE AS ORIGINAL



HOLE	DESCRIPTION	REQ'D.
A	.062 DIA.	9
B	.032 DIA.	23
C	.052	4
UNMARKED	.042	50

.062 THK.
EPOXY-GLASS
FL-GE-062-C2 MACHINING

BOARD TO BE IN ACCORDANCE WITH TMC SPEC. S-735

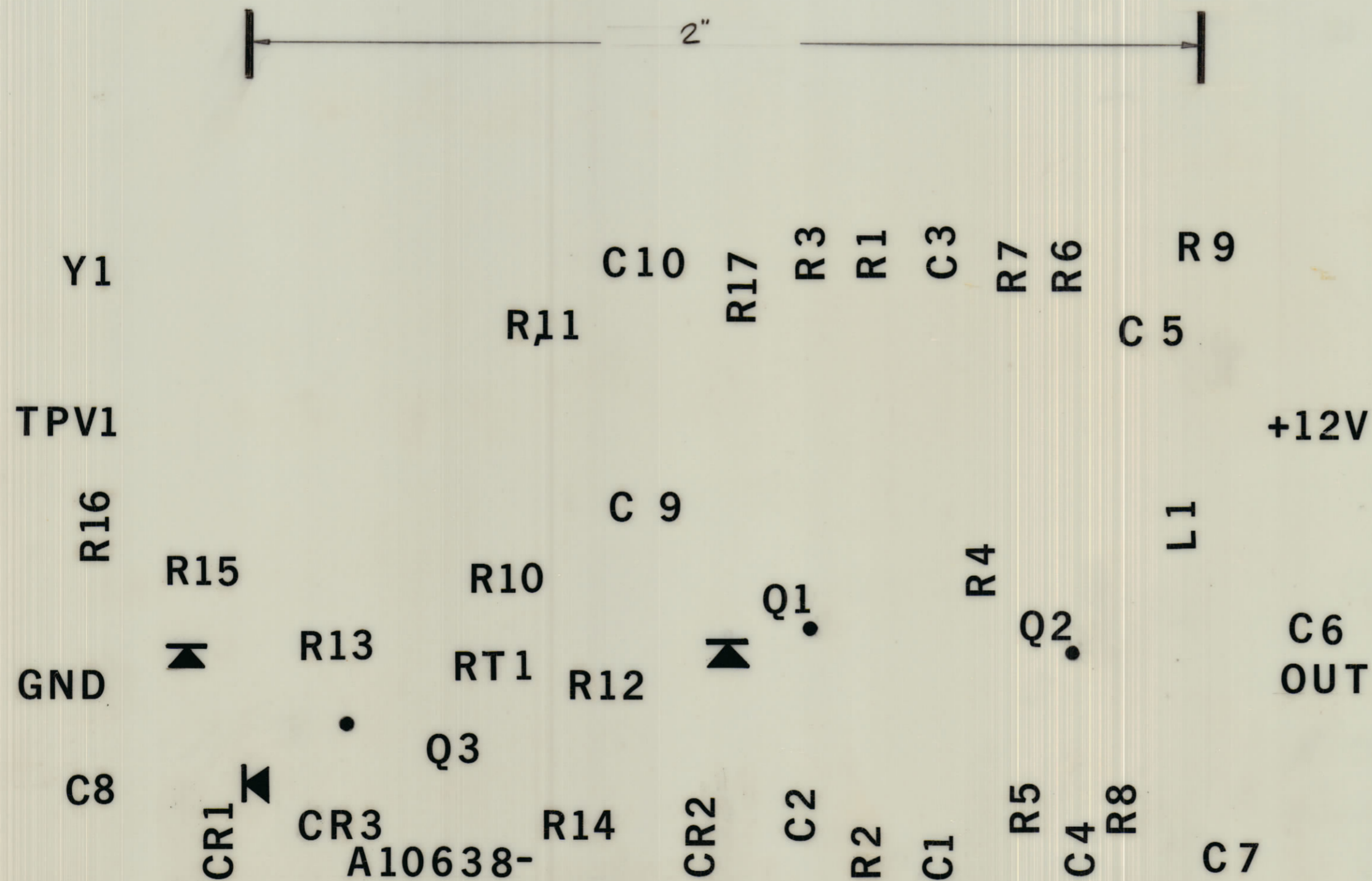
TIN-LEAD PLATE
.0003 THK. MIN. 2 OF 4 A10638-2

IF IT IS FOUND DESIRABLE TO CHANGE ANY TOLERANCE OR OTHER DETAIL SPECIFIED ON THIS DRAWING NOTIFY THE PURCHASER PROMPTLY.

DIMENSIONS IN INCHES UNLESS OTHERWISE SPECIFIED

MAXIMUM ALLOWABLE TOLERANCES HAVE BEEN DETERMINED AND DEVIATIONS WILL BE CAUSE FOR REJECTION. REMOVE ALL BURRS AND SHARP EDGES.

ISSUE	ITEM	CHANGED FROM	DATE	CH. NO.	DRAFTS	CHECKER	ENG. APP.
B		REDRAWN PER CEMN 1087	Nov. 23/71	1087	PL	<i>A.P.</i>	<i>J.M.</i>

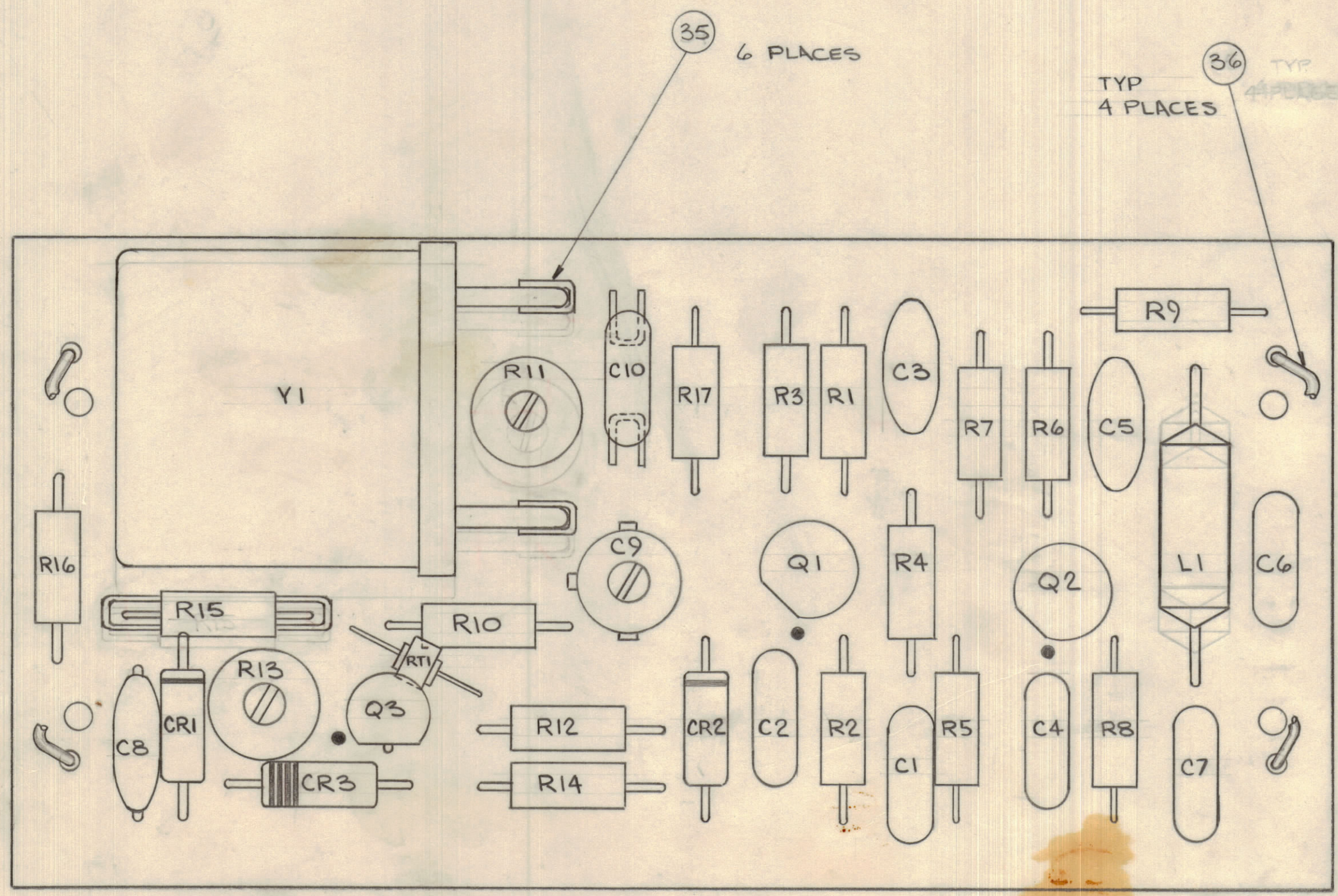
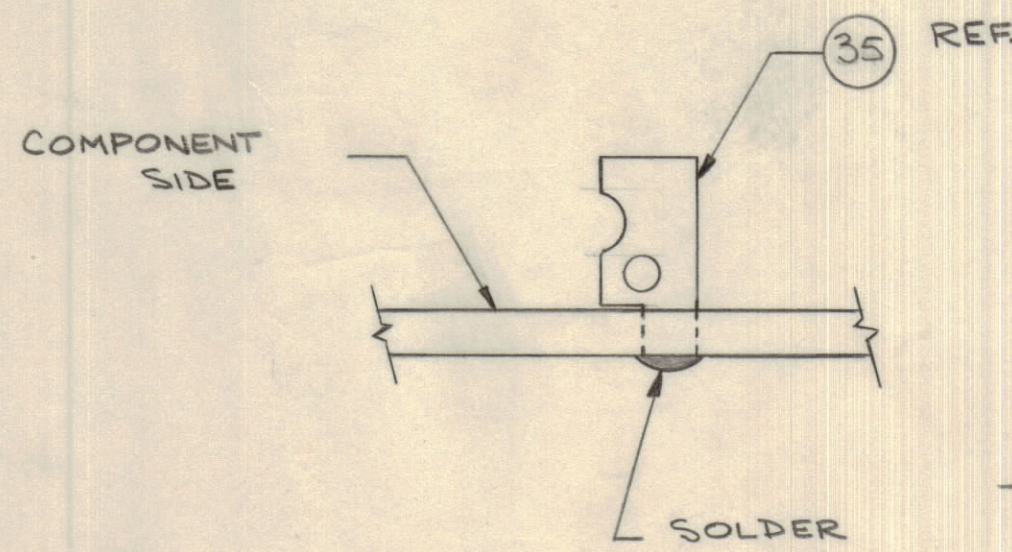


A10638-3 B

SCALE 4:1
COMPONENT SIDE

STOCK SIZE		TMC (Canada) LIMITED OTTAWA ONTARIO	
MATERIAL		P.C. BD. OSCILLATOR LETTERING	
WEIGHT PER PC.		P. LINDSAY	
TYPE & TEMPER		DRAWN	MECH. DES. APP.
HEAT TREAT. SPEC.		A. PROCTOR	ELEC. DES. APP.
FINISH & SPEC. NO.		FINAL APPROVAL	
TCXO	068/67	A10638-5	NOV. 23/71
MODEL	PROJECT NO.	ASS'Y. NO.	DATE
USED ON		SHEET 3 of 4 A10638-3 B	

IF IT IS FOUND DESIRABLE TO CHANGE ANY TOLERANCE OR OTHER DETAIL SPECIFIED ON THIS DRAWING NOTIFY THE PURCHASER PROMPTLY.		DIMENSIONS IN INCHES UNLESS OTHERWISE SPECIFIED					
MAXIMUM ALLOWABLE TOLERANCES HAVE BEEN DETERMINED AND DEVIATIONS WILL BE CAUSE FOR REJECTION. REMOVE ALL BURRS AND SHARP EDGES.		OTHERWISE SPECIFIED					
ISSUE	ITEM	CHANGED FROM	DATE	CH. NO.	DRAFTS	CHECKER	ENG. APP.
B		REDRAWN PER CEMN. 1087	NOV. 19/71	1087	PL	<i>[Signature]</i>	<i>[Signature]</i>



REQ.	ITEM	PART NO.	DESCRIPTION	USED ON	REMARKS
1		A10638-1	P.C. BD. ETCH.	A10638-2	
1		A10638-2	P.C. BD. MACH.	A10638-3	
1	1	A10638-3	P.C. BD. LETTERING	A10638-5	
	2				
	3				
2	4	CC100-29	CAP. FXD., CER.	A10638-5	C3,5
1	5	CC10012	CAP. FXD., CER.		C8
1	6	CL275-470	COIL, RF, FXD.		L1
2	7	CM1002C101J	CAP. FXD., MICA		C4 C10*
1	8	CM10002C151J			*C10, S1200 NOTE 34
1	8	CM10002C181J			C10*
1	9	CM10002C201J			C2
3	10	CM10002C331J	CAP. FXD. MICA		C1,6,7
1	11	CR10007	CRYSTAL UNIT, QTZ.		Y1
1	12	CV10001	CAP. FXD., VAR.		C9
1	13	DD10003-1	DIODE, VVC		CR2
2	14	RC07GF101J	RES., FXD. COMP.		R4, B
1	15	RC07GF102J			R3
2	16	RC07GF103J			R14, R16
1	17	RC07GF104J			R10
1	18	RC07GF152J			R17
1	19	RC07GF333J			R1
1	20	RC07GF472J			R12
1	21	RC07GF473J			R2
2	22	RC07GF562J			R5,6
1	23	RC07GF683J	RES., FXD., COMP.	A10638-5	R7
					A10638-5 B
1	24	RC07GF821J	RES., FXD., COMP.	A10638-5	R9
1	25	RC07GFXXXJ	RES., FXD., COMP.		R15, S1200 NOTE 34
1	26	RR10003	THERMISTOR		RT1
1	27	RV10007-7P	RES., VAR., COMP.		R11
1	28	RV10007-9P	RES., VAR., COMP.		R13
1	29	1N456	DIODE		CR3
1	30	1N756A	DIODE		CR1
1	31	2N3640	TRANSISTOR		Q3
2	32	2N3646	TRANSISTOR	A10638-5	Q1, Q2
	33				
	34				
6	35	TE10019	TERM., SOLDER	A10638-5	
X	36	WL100-7	WIRE, BUSS	A10638-5	
					CK10536 SCHEMATIC, TCXO REF.

TOLERANCES		SCALE: 4:1
ALL OTHERS	DEC. DIM. ± .XX*.05 FRAC. DIM. ± 1/64 ANGULAR DIM. ± 0° 30'	DRILL, PUNCH, COMMERCIAL STOCK SIZES AND MANUFACTURERS TOLERANCES ARE NOT INCLUDED.

TCXO	068/67	NF10002	NOV. 19/71
MODEL	PROJECT NO.	ASS'Y. NO.	DATE

TMC (Canada) LIMITED OTTAWA ONTARIO			
P.C. BD., OSCILLATOR ASSEMBLY			
STOCK SIZE	MATERIAL	WEIGHT PER PC.	TYPE & TEMPER.
DRAWN: PLINDSAY		ELEC. DES. APP.	MECH. DES. APP.
CHECKED: A PROCTOR		FINAL APPROVAL	
HEAT TREAT. SPEC.		FINISH & SPEC. NO.	
SHEET 4 OF 4		A10638-5 B	