

IF IT IS FOUND DESIRABLE TO CHANGE ANY TOLERANCE OR OTHER DETAIL SPECIFIED ON THIS DRAWING NOTIFY THE PURCHASER PROMPTLY.

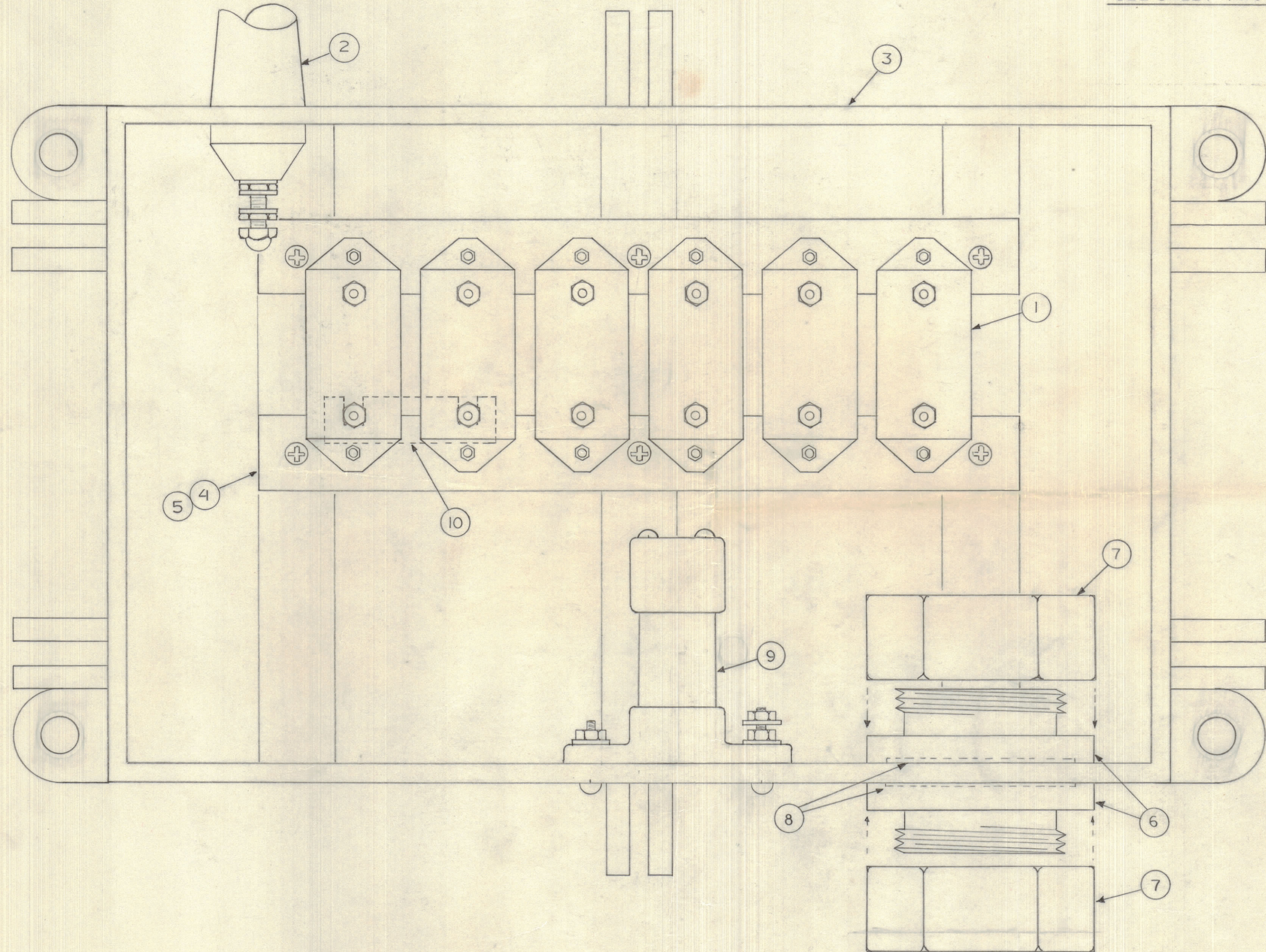
MAXIMUM ALLOWABLE TOLERANCES HAVE BEEN DETERMINED AND DEVIATIONS WILL BE CAUSE FOR REJECTION. REMOVE ALL BURRS AND SHARP EDGES.

DIMENSIONS IN INCHES UNLESS OTHERWISE SPECIFIED

ISSUE	ITEM	CHANGED FROM	DATE	CN. NO.	DRAFTS	CHECKER	ENG. APP.

REQ.	ITEM	PART NO.	DESCRIPTION	SYMBOL

SEE SHEET TWO FOR MATERIAL LIST



A 10621 ∅

TOLERANCES		SCALE:
ALL OTHERS	DEC. DIM. ±	DRILL, PUNCH, COMMERCIAL STOCK SIZES AND MANUFACTURERS TOLERANCES ARE NOT INCLUDED.
	FRAC. DIM. ±	
	ANGULAR DIM. ±	

MODEL	PROJECT NO.	ASS'Y. NO.	DATE
	C 10756		6 APR 67

TMC (Canada) LIMITED OTTAWA ONTARIO			
ASSEMBLY TUNING CASE			
MATERIAL		WEIGHT PER P.C.	
TYPE & TEMPER			
DRAWN		MECH. DES. APP.	
HEAT TREAT. SPEC.		CHECKED	
FINISH & SPEC. NO.		FINAL APPROVAL	
SHT 1 OF 2		A 10621 ∅	

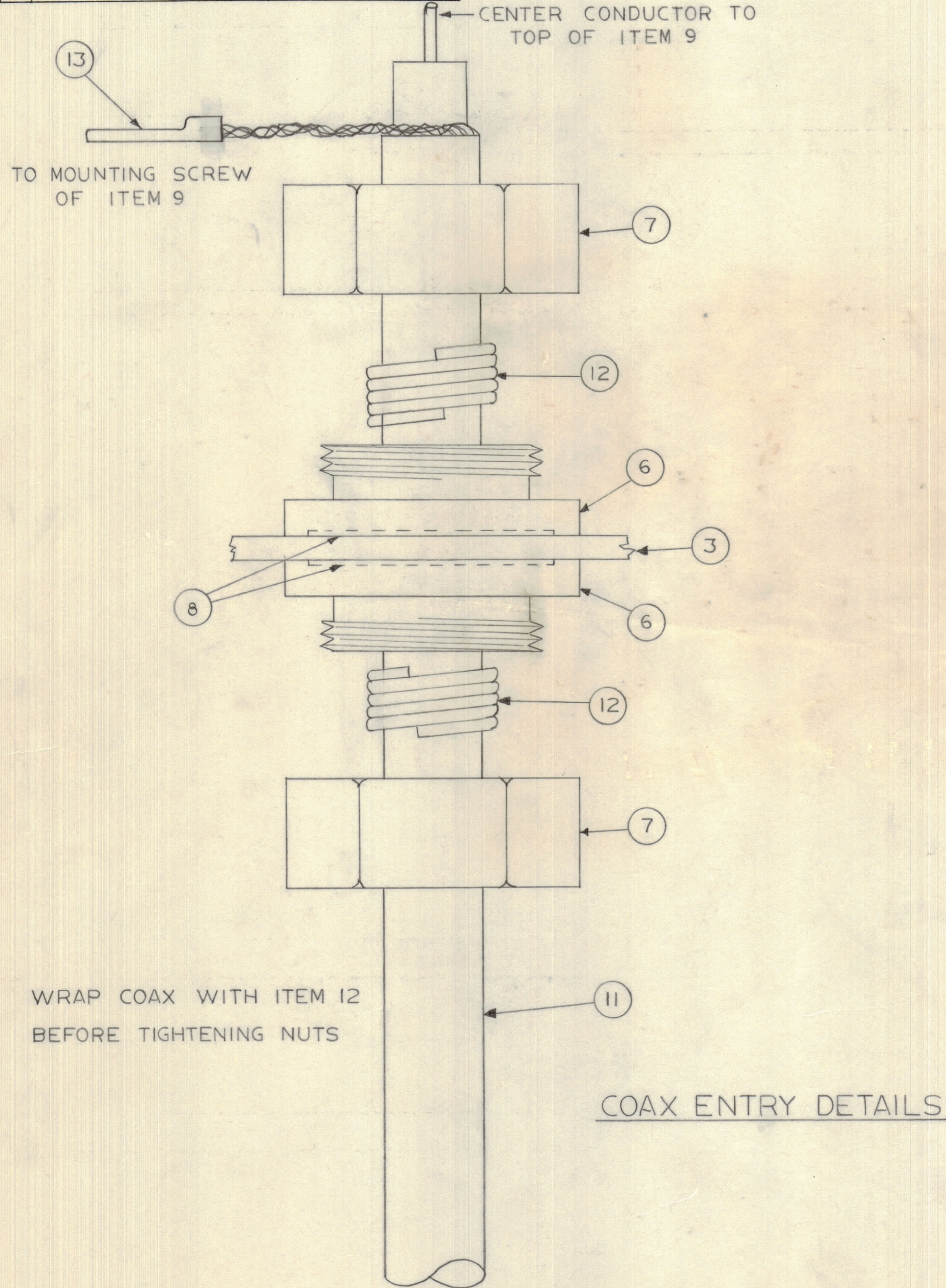
IF IT IS FOUND DESIRABLE TO CHANGE ANY TOLERANCE OR OTHER DETAIL SPECIFIED ON THIS DRAWING NOTIFY THE PURCHASER PROMPTLY.

MAXIMUM ALLOWABLE TOLERANCES HAVE BEEN DETERMINED AND DEVIATIONS WILL BE CAUSE FOR REJECTION. REMOVE ALL BURRS AND SHARP EDGES.

DIMENSIONS IN INCHES UNLESS OTHERWISE SPECIFIED

ISSUE	ITEM	CHANGED FROM	DATE	CN. NO.	DRAFTS	CHECKER	ENG. APP.

REQ.	ITEM	PART NO.	DESCRIPTION	SYMBOL
6	1	CM70B10IJM	CAPACITOR 100 PF	
1	2	A-102	INSULATOR ASSEMBLY	
1	3	PM-10085	CASE	
2	4	PX-10445	MOUNTING BOARD	
2	5	PX-10446	INSULATING BOARD	
2	6	PM-107	COUPLING, FLANGE	
2	7	PM-10086	NUT, SEALING	
2	8	GA-102	GASKET	
1	9	NS-125-1	INSULATOR	
12	10	MS-10825	TUNING STRAP	
	11	RG-35/U	COAX	
	12		WATER PUMP PACKING 1/4"	
	13		LUG, SOLDER	
	14			
	15			



A 10621 ϕ

TOLERANCES		SCALE:
ALL OTHERS	DEC. DIM. \pm FRAC. DIM. \pm ANGULAR DIM. \pm	DRILL, PUNCH, COMMERCIAL STOCK SIZES AND MANUFACTURERS TOLERANCES ARE NOT INCLUDED.

MODEL	C-10756	PROJECT NO.	ASS'Y. NO.	DATE	6 APR 67
USED ON					

STOCK SIZE		TMC (Canada) LIMITED OTTAWA ONTARIO	
MATERIAL		ASSEMBLY	
WEIGHT PER PC.		TUNING CASE	
TYPE & TEMPER		LANGER	
HEAT TREAT. SPEC.		DRAWN	ELEC. DES. APP. <i>(Signature)</i>
FINISH & SPEC. NO.		CHECKED	FINAL APPROVAL
		SHT 2 OF 2 A 10621 ϕ	