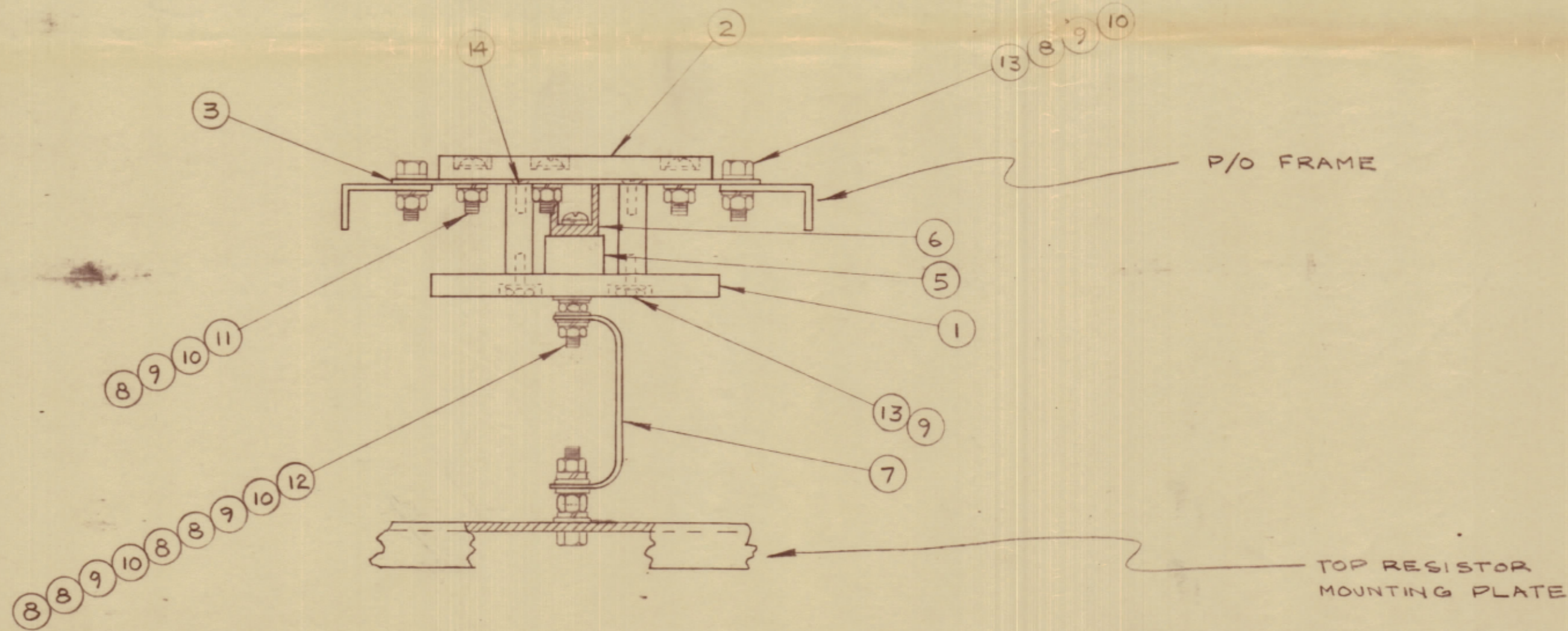
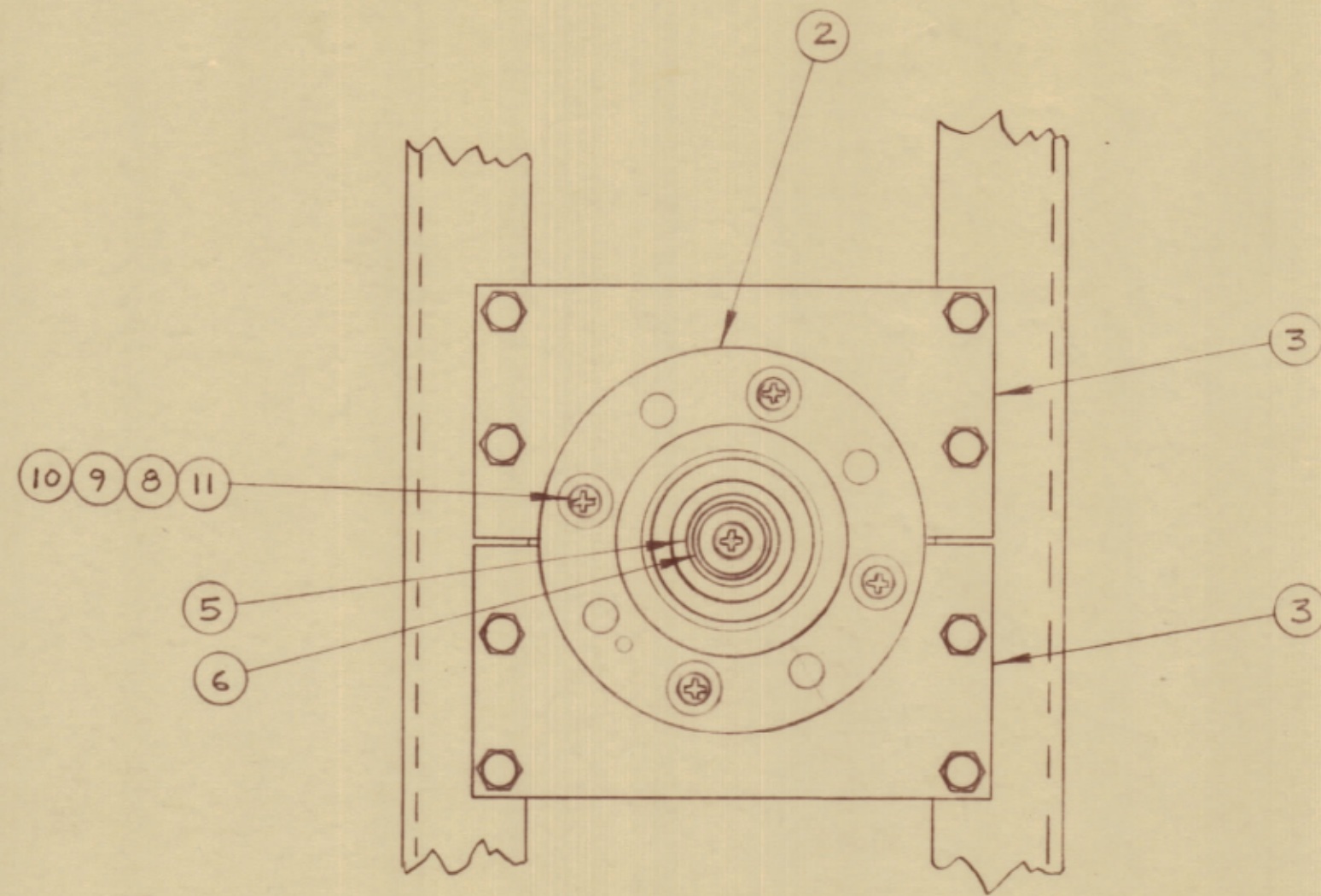


IF IT IS FOUND DESIRABLE TO CHANGE ANY TOLERANCE OR OTHER DETAIL SPECIFIED ON THIS DRAWING NOTIFY THE PURCHASER PROMPTLY.				DIMENSIONS IN INCHES UNLESS OTHERWISE SPECIFIED			
MAXIMUM ALLOWABLE TOLERANCES HAVE BEEN DETERMINED AND DEVIATIONS WILL BE CAUSE FOR REJECTION. REMOVE ALL BURRS AND SHARP EDGES.							
ISSUE	ITEM	CHANGED FROM	DATE	CH. NO.	DRAFTS	CHECKER	ENG. APP.
Ø		RELEASED TO PROD.	NOV 18/66		RPL		

REQ	ITEM	PART NO.	DESCRIPTION	SYMBOL
1	1	PX 630	PLATE, CONTACT CUP MTG.	
1	2	PM 708	PLATE, ADAPTOR	
2	3	MS10756	PLATE, MOUNTING	
4	4	TE2520GR59R	SPACER, THREADED	
1	5	MS10757	ADAPTOR, CONTACT	
1	6	PM 710-1	ADAPTOR, CONTACT 50 Ω	
1	7	MS202-25-7.00	LEAD, CONNECTING	
16	8	FW25HBN	WASHER, FLAT	
18	9	LWS25MRN	WASHER, LOCK SPLIT	
14	10	NTH2520BN14	NUT, HEX.	
4	11	SCBP2520BN16	SCREW, MACHINE	
1	12	SCBP2520BN36	SCREW, MACHINE	
12	13	SCHH2520BN10	BOLT, MACHINE	
4	14	SCFP2520BN12	SCREW, FLAT HEAD	



A10602 Ø

REF: ID10568

STOCK SIZE		TMC (Canada) LIMITED OTTAWA ONTARIO	
MATERIAL		ASS'Y. FLANGE	
WEIGHT PER PC.		RPL	
TYPE & TEMPER		ELEC. DES. APP. MECH. DES. APP.	
HEAT TREAT. SPEC.		CHECKED FINAL APPROVAL	
FINISH & SPEC. NO.		A10602 Ø	

TOLERANCES		SCALE: NTS:
ALL OTHERS	DEC. DIM. ± FRAC. DIM. ± ANGULAR DIM. ±	DRILL, PUNCH, COMMERCIAL STOCK SIZES AND MANUFACTURERS TOLERANCES ARE NOT INCLUDED.

TER-25K-A-50	KIT 10016	NOV 18/66
MODEL	PROJECT NO.	ASS'Y. NO.
		DATE