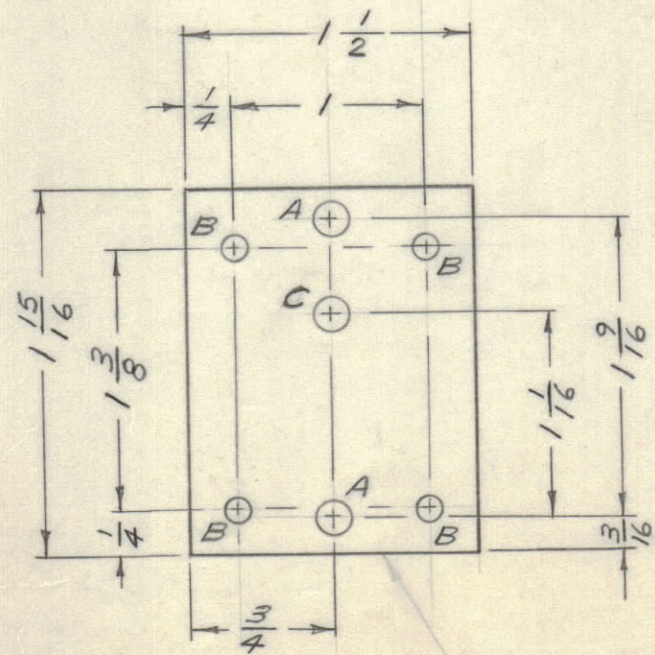
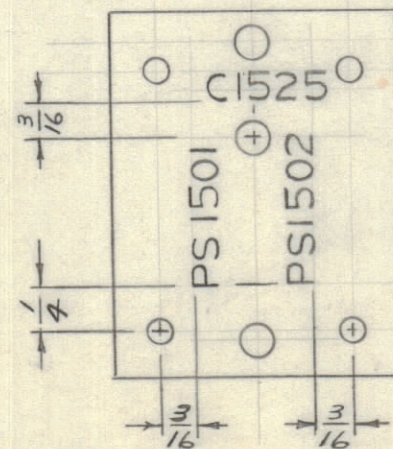


IF IT IS FOUND DESIRABLE TO CHANGE ANY TOLERANCE OR OTHER DETAIL SPECIFIED ON THIS DRAWING NOTIFY THE PURCHASER PROMPTLY.		DIMENSIONS IN INCHES UNLESS OTHERWISE SPECIFIED					
MAXIMUM ALLOWABLE TOLERANCES HAVE BEEN DETERMINED AND DEVIATIONS WILL BE CAUSE FOR REJECTION. REMOVE ALL BURRS AND SHARP EDGES.							
ISSUE	ITEM	CHANGED FROM	DATE	CN. NO.	DRAFTS	CHECKER	ENG. APP.
Ø		RELEASE TO PROD	2/10/67		AP		
A		REV. AS PER CEMN	1/4/68	353	S.P.		



HOLE DESCRIPTION REQ
 A 9/64 DIA 2
 B .113 DIA 4
 C 1/64 DIA NATURAL

MATERIAL: .125 THK SILICON (G-7)
 FINISH: NATURAL
 A10582-1
 MACHINING

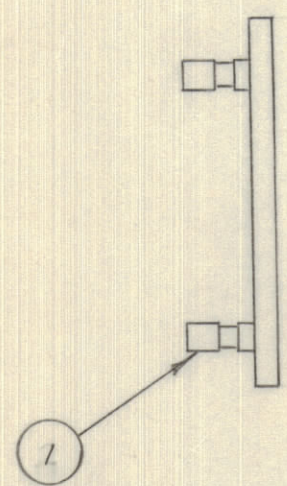


LETTERING: 1/8 HIGH BLACK GOTHIC PER TMC SPEC S737

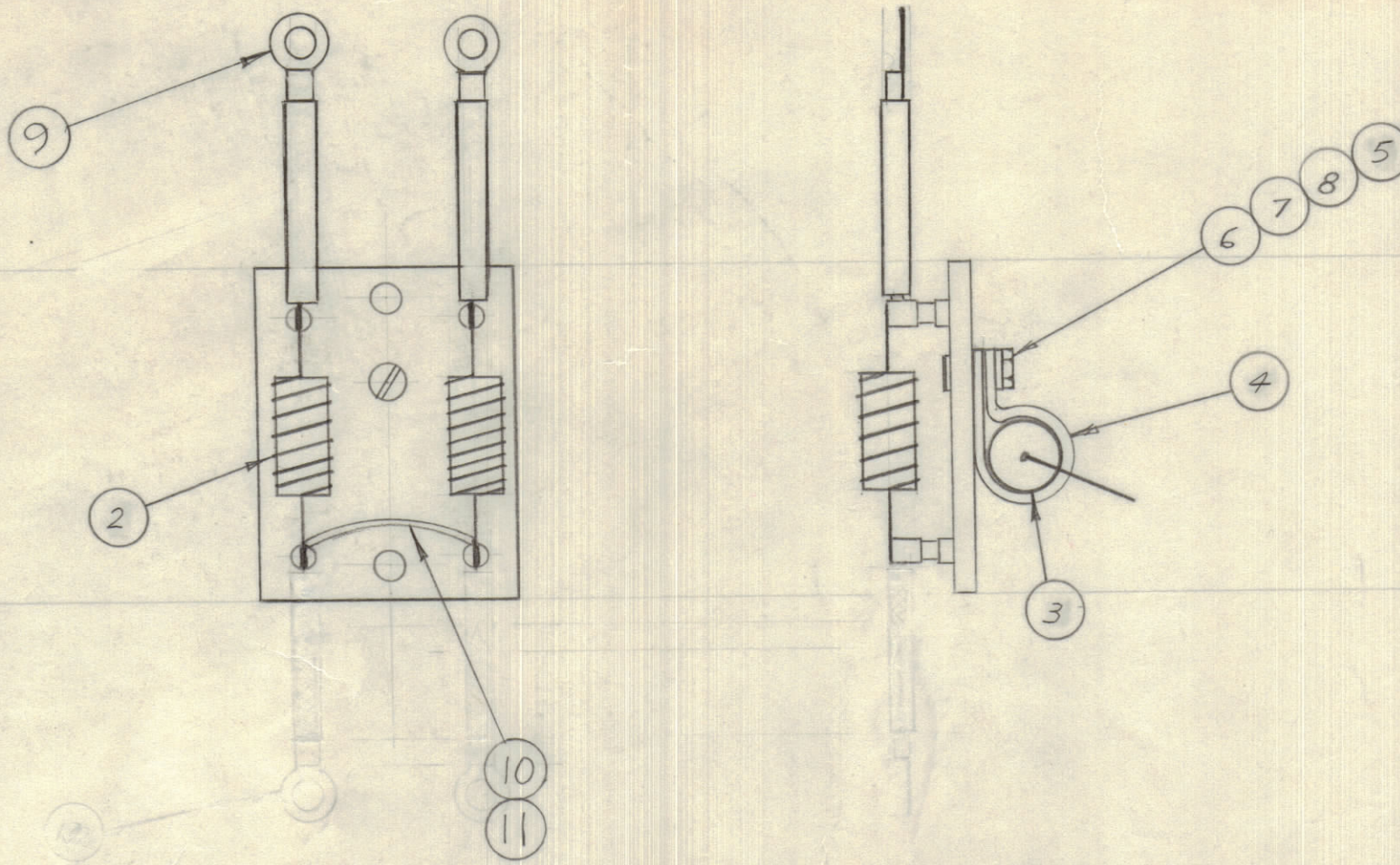
A10582-2
 LETTERING

REQ.	ITEM	PART NO.	DESCRIPTION	SYMBOL
4	1	TE109-3A	TERMINAL LUG SPLIT	
2	2	AX391	SUPP. PARASITIC	PS1501 PS1502
1	3	CX109-1	CAP, FIXED PLSTC	C1525
1	4	CU102-7	CLAMP LOOP	
1	5	SCBP0632BN9	SCREW MACHINE	
1	6	NTH0632BN8	NUT HEX	
1	7	FW06MBN	WASHER FLAT	
1	8	LWE06MRN	LOCKWASHER EXT	
2	9	CA10486	CABLE ASSY	
AR	10	PX370-15-7	SLEEVING, TEFLON	
AR	11	WL100-5	WIRE BUSS	

A10582 A



A10582-3
 SUB-ASSY



A10582-4
 FINAL ASSY

TOLERANCES		SCALE: 1:1
ALL OTHERS	DEC. DIM. ± .X=.05 FRAC. DIM. ± 1/64 .XX=.01 ANGULAR DIM. ± 0°30' .XXX=.005	DRILL, PUNCH, COMMERCIAL STOCK SIZES AND MANUFACTURERS TOLERANCES ARE NOT INCLUDED.

AX10033	053/67	15 MAR 67
MODEL	PROJECT NO.	ASSY. NO.
USED ON		

STOCK SIZE		TMC (Canada) LIMITED OTTAWA ONTARIO	
MATERIAL		ASSY, BOARD	
WEIGHT PER PC.		SUPPRESSOR	
TYPE & TEMPER		RD	
HEAT TREAT. SPEC.		DRAWN	ELEC. DES. APP. MECH. DES. APP.
FINISH & SPEC. NO.		CHECKED	FINAL APPROVAL
		A10582 A	