

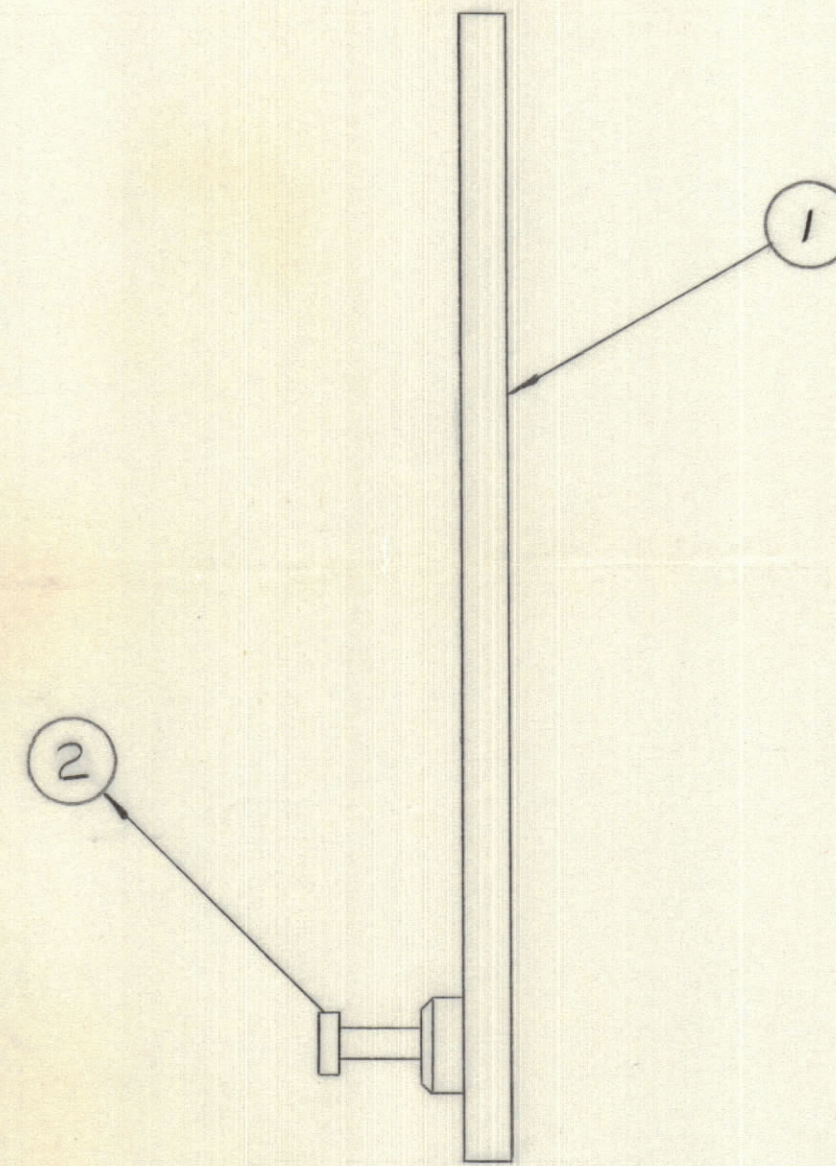
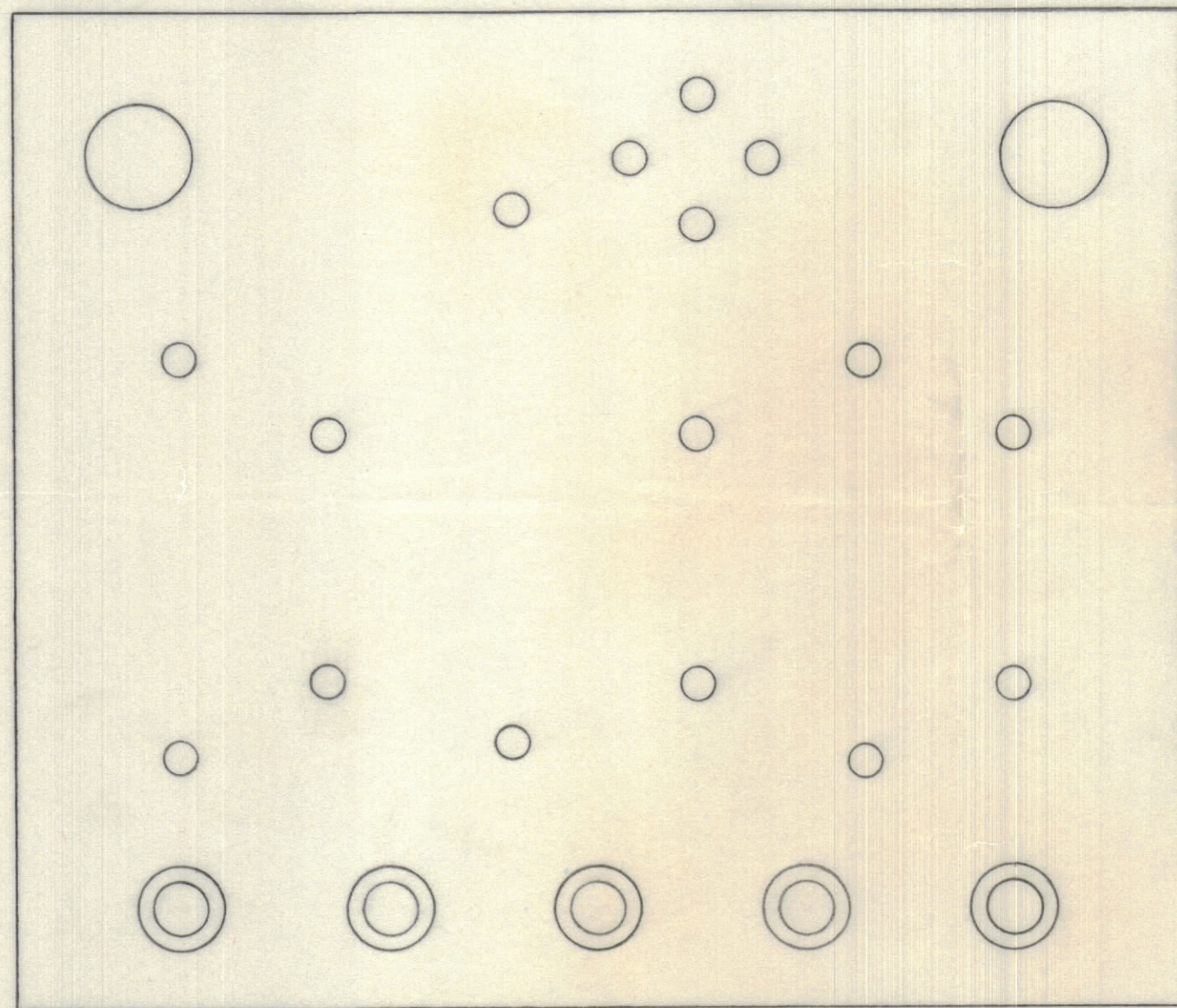
IF IT IS FOUND DESIRABLE TO CHANGE ANY TOLERANCE OR OTHER DETAIL SPECIFIED ON THIS DRAWING NOTIFY THE PURCHASER PROMPTLY.

MAXIMUM ALLOWABLE TOLERANCES HAVE BEEN DETERMINED AND DEVIATIONS WILL BE CAUSE FOR REJECTION. REMOVE ALL BURRS AND SHARP EDGES.

DIMENSIONS IN INCHES UNLESS OTHERWISE SPECIFIED

ISSUE	ITEM	CHANGED FROM	DATE	CN. NO.	DRAFTS	CHECKER	ENG. APP.
A		REDRAWN	12/1/66		RA		

REQ.	ITEM	PART NO.	DESCRIPTION	SYMBOL
1	1	A10537-3	CW KEYING BOARD	
5	2	TE127-2	TERMINAL, STUD	



A10537-4 A

TOLERANCES		SCALE: 4:1
ALL OTHERS	DEC. DIM. ± FRAC. DIM. ± ANGULAR DIM. ±	DRILL, PUNCH, COMMERCIAL STOCK SIZES AND MANUFACTURERS TOLERANCES ARE NOT INCLUDED.

TTR-10	005/67	A10537-5	15 NOV 66
MODEL	PROJECT NO.	ASS'Y. NO.	DATE

STOCK SIZE		TMC (Canada) LIMITED OTTAWA ONTARIO	
MATERIAL		CW KEYING BOARD (SUB ASSEMBLY)	
WEIGHT PER PC.		RA	
TYPE & TEMPER		DRAWN	ELEC. DES. APP. MECH. DES. APP.
HEAT TREAT. SPEC.		 CHECKED FINAL APPROVAL	
FINISH & SPEC. NO.		SHEET 4 OF 5 A10537-4 A	