

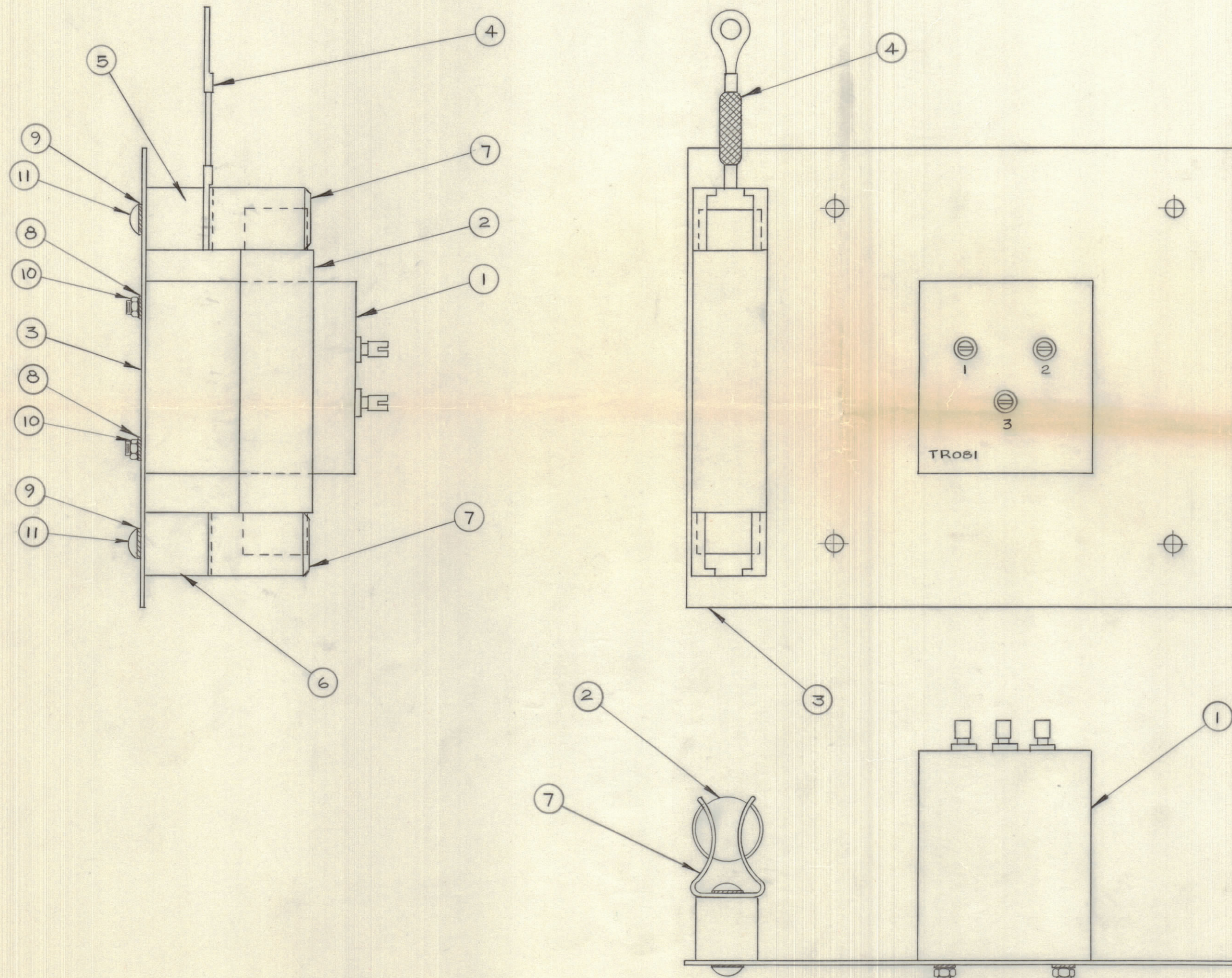
IF IT IS FOUND DESIRABLE TO CHANGE ANY TOLERANCE OR OTHER DETAIL SPECIFIED ON THIS DRAWING NOTIFY THE PURCHASER PROMPTLY.

DIMENSIONS IN INCHES UNLESS OTHERWISE SPECIFIED

MAXIMUM ALLOWABLE TOLERANCES HAVE BEEN DETERMINED AND DEVIATIONS WILL BE CAUSE FOR REJECTION. REMOVE ALL BURRS AND SHARP EDGES.

ISSUE	ITEM	CHANGED FROM	DATE	CN. NO.	DRAFTS	CHECKER	ENG. APP.
Ø		RELEASED TO PROD.	Nov/22/66		RPL		<i>[Signature]</i>

REQ.	ITEM	PART NO.	DESCRIPTION	SYMBOL
1	1	TRO81	TRANSFORMER R/F	
1	2	SW176	LIGHTING ARRESTOR	
1	3	MS10589	PLATE, MOUNTING	
1	4	CA409-23-200	LEAD, ELECTRICAL	
1	5	NS3W0306	STANDOFF, INSULATOR	
1	6	TE1032BN62R	SPACER, THREADED	
2	7	FH102	CLIP, FUSE	
4	8	LWE06MRN	WASHER, LOCK EXTERNAL	
4	9	LWE10MRN	WASHER, LOCK EXTERNAL	
4	10	NTH0632BN8	NUT, HEX.	
4	11	SCBPI032BN6	SCREW, MACHINE	



A10533 Ø

TOLERANCES SCALE: N.T.S.

ALL OTHERS	DEC. DIM. ±	FRAC. DIM. ±	ANGULAR DIM. ±	DRILL, PUNCH, COMMERCIAL STOCK SIZES AND MANUFACTURERS TOLERANCES ARE NOT INCLUDED.

VRA-12		A10531	OCT. 27/66
MODEL	PROJECT NO.	ASS'Y. NO.	DATE
USED ON			

STOCK SIZE		TMC (Canada) LIMITED OTTAWA ONTARIO	
MATERIAL		TRANSFORMER PLATE ASS'Y.	
WEIGHT PER PC.			
TYPE & TEMPER		RPL	
HEAT TREAT. SPEC.		<i>[Signature]</i>	<i>[Signature]</i>
FINISH & SPEC. NO.		CHECKED	FINAL APPROVAL
			A10533 Ø