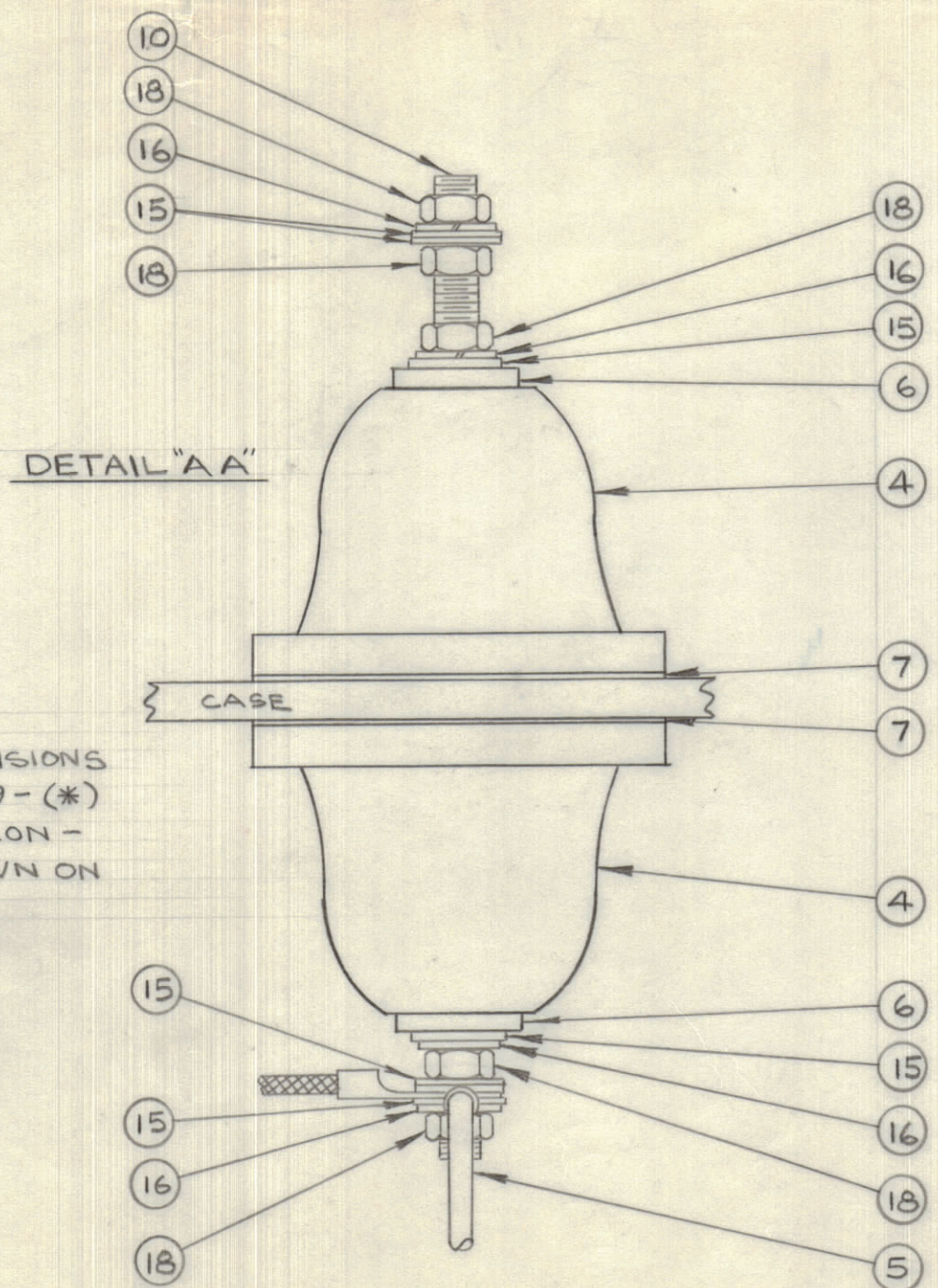
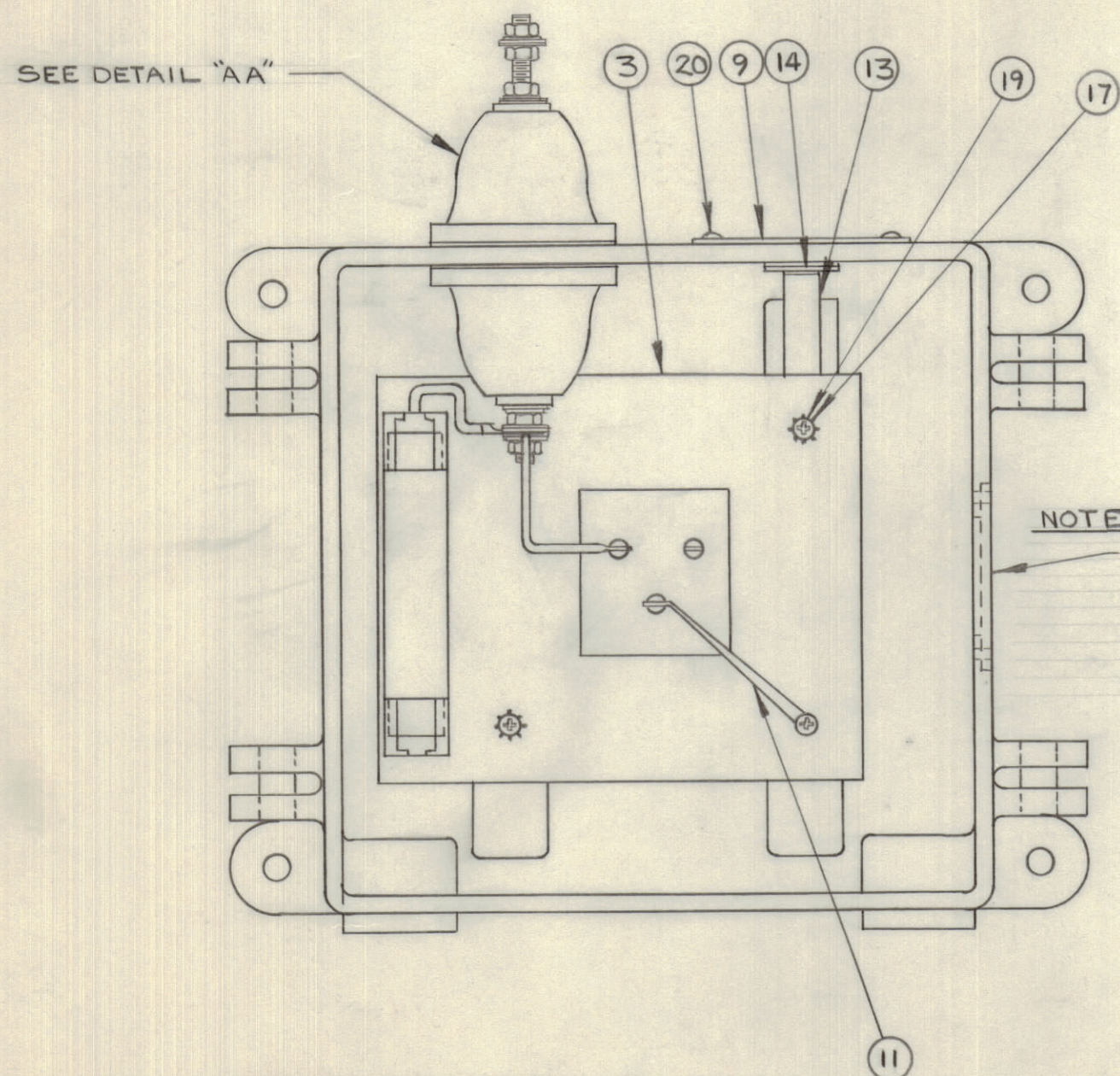
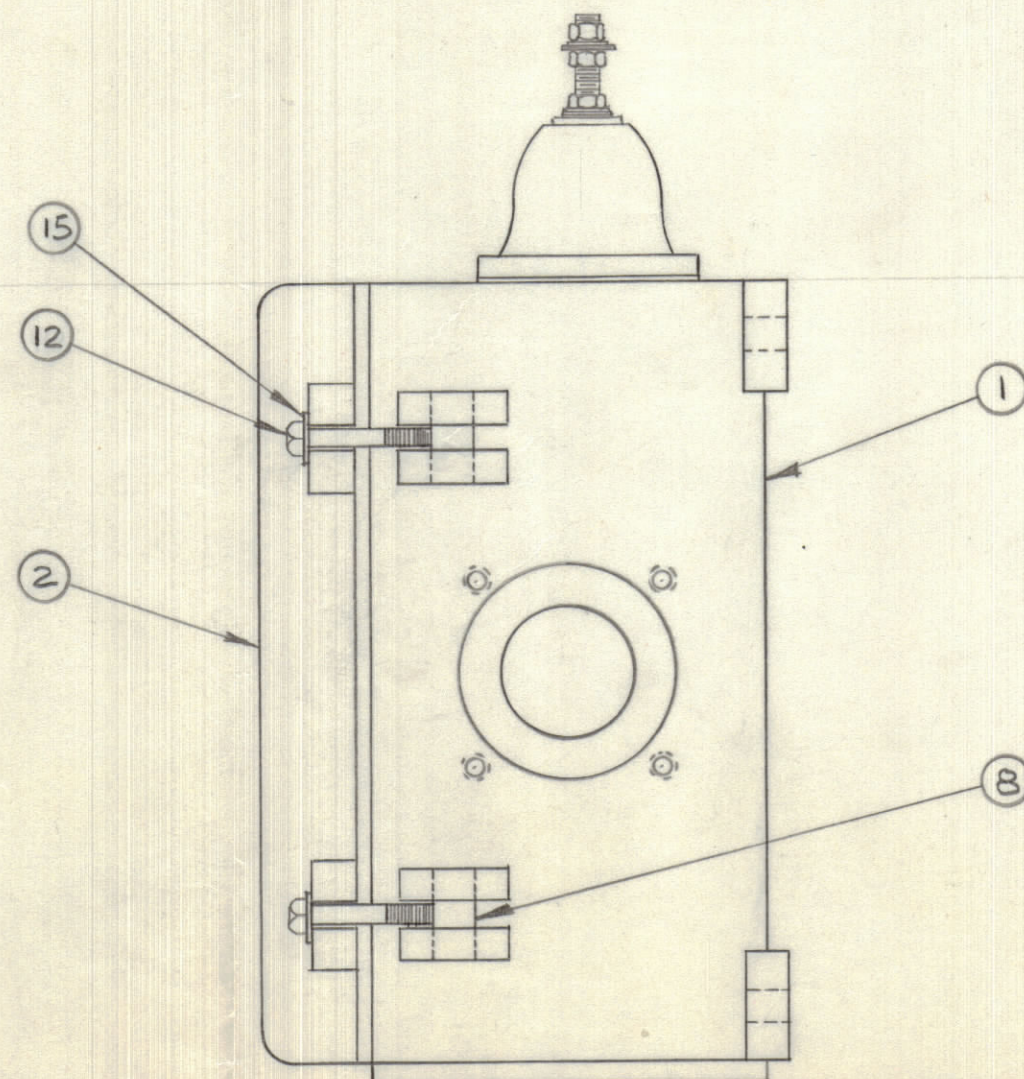
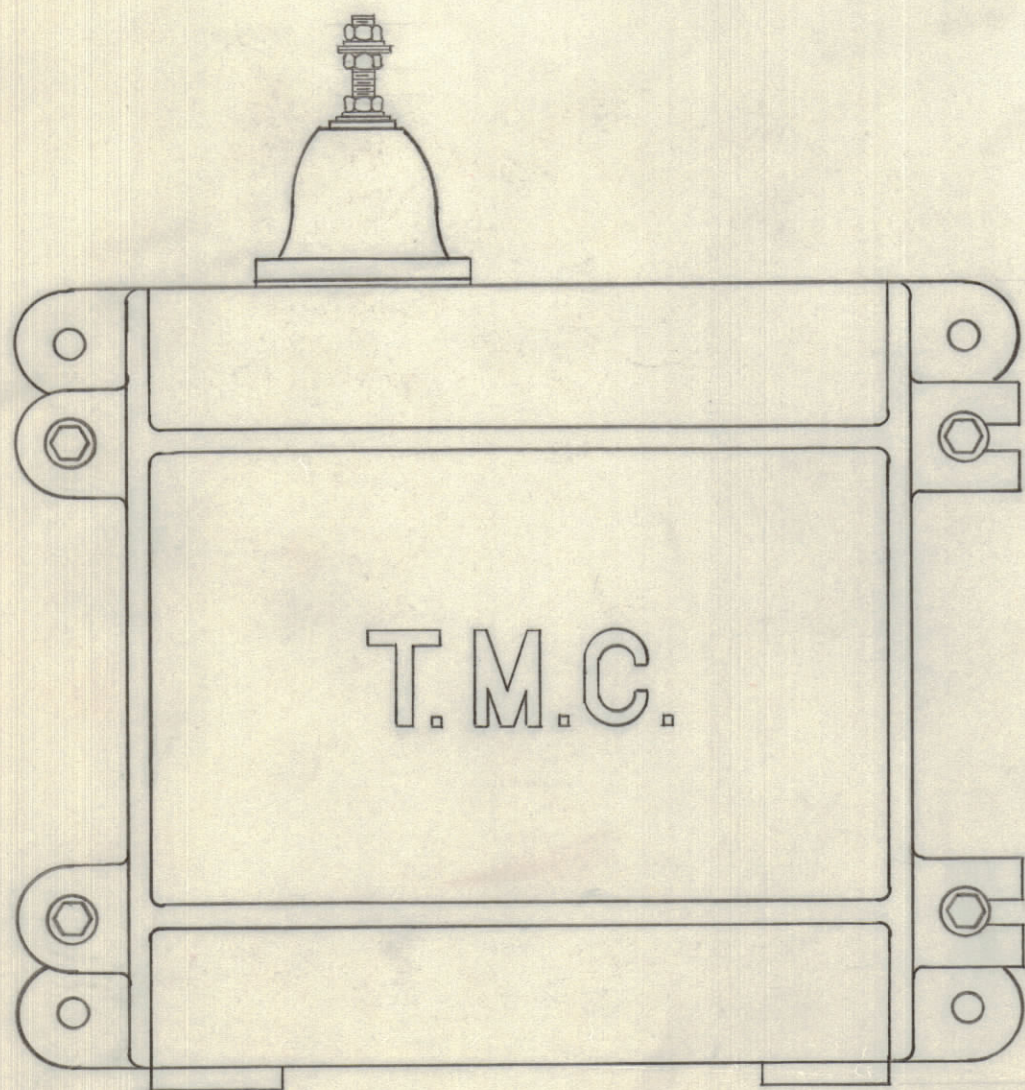


IF IT IS FOUND DESIRABLE TO CHANGE ANY TOLERANCE OR OTHER DETAIL SPECIFIED ON THIS DRAWING NOTIFY THE PURCHASER PROMPTLY.		DIMENSIONS IN INCHES UNLESS OTHERWISE SPECIFIED					
MAXIMUM ALLOWABLE TOLERANCES HAVE BEEN DETERMINED AND DEVIATIONS WILL BE CAUSE FOR REJECTION. REMOVE ALL BURRS AND SHARP EDGES.							
ISSUE	ITEM	CHANGED FROM	DATE	CN. NO.	DRAFTS	CHECKER	ENG. APP.
Ø		RELEASED TO PROD	NOV. 25/64		RPL		

REQ.	ITEM	PART NO.	DESCRIPTION	SYMBOL
1	1	PM 717	CASE, MACHINING	
1	2	A10532	COVER, ASS'Y.	
1	3	A10533	TRANSFORMER, MTG. PLATE ASS'Y	
2	4	NS 115	CAP, INSULATING	
1	5	CA 10425	CABLE, CONNECTOR	
2	6	RY 112	GLAND, MODIFIED	
2	7	GA 126	GASKET, INNER	
4	8	PM 100	PIN COVER BOLT	
1	9	NP10081-509	NAMEPLATE	
1	10	A 100	STUD, ASS'Y	
1	11	FP 144	CONNECTOR, GROUND	
4	12	SC 108-9	BOLT, HEX.	
1	13	MS 933	HOLDER, DESSICANT	
2	14	AD 101-1/6	DESSICANT	
10	15	FW 25 HSS	WASHER, FLAT	
4	16	LWS 25 MSS	LOCKWASHER, SPLIT	
4	17	LWE 08 MRN	LOCKWASHER, EXTERNAL	
5	18	NTH 25 20SS1A	NUT, HEX.	
4	19	SCBP0832BN6	SCREW, MACHINE	
4	20	SFB0256AW4	SCREW, SELF TAPPING	



NOTE:
FOR CABLE ENTRY PROVISIONS SEE TMC MODEL AX 259- (*) OR MOUNTING PLATE CONNECTOR ASS'Y AS SHOWN ON SALES ORDER

A10531 Ø

TOLERANCES		SCALE: NTS.
ALL OTHERS	DEC. DIM. ± FRAC. DIM. ± ANGULAR DIM. ±	DRILL, PUNCH, COMMERCIAL STOCK SIZES AND MANUFACTURERS TOLERANCES ARE NOT INCLUDED.

VRA-12			NOV 24/64
MODEL	PROJECT NO.	ASS'Y. NO.	DATE
USED ON			

STOCK SIZE		TMC (Canada) LIMITED OTTAWA ONTARIO	
MATERIAL			
WEIGHT PER PC.		CASE, ASS'Y.	
TYPE & TEMPER		RPL	
HEAT TREAT. SPEC.			
FINISH & SPEC. NO.		CHECKED	FINAL APPROVAL
		A10531 Ø	