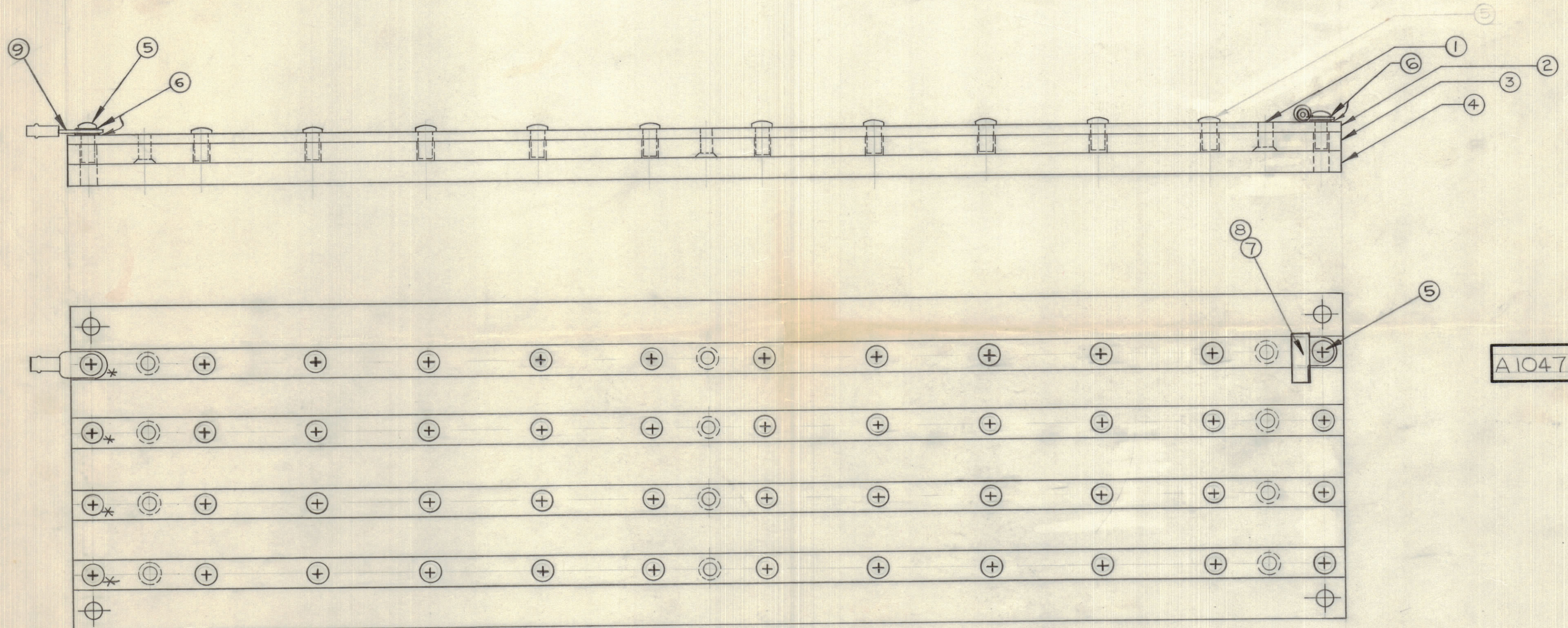


IF IT IS FOUND DESIRABLE TO CHANGE ANY TOLERANCE OR OTHER DETAIL SPECIFIED ON THIS DRAWING NOTIFY THE PURCHASER PROMPTLY.		DIMENSIONS IN INCHES UNLESS OTHERWISE SPECIFIED					
MAXIMUM ALLOWABLE TOLERANCES HAVE BEEN DETERMINED AND DEVIATIONS WILL BE CAUSE FOR REJECTION. REMOVE ALL BURRS AND SHARP EDGES.							
ISSUE	ITEM	CHANGED FROM	DATE	CN. NO.	DRAFTS	CHECKER	ENG. APP.
Ø		REL. TO PROD.	MAY 12/66		GM		
A		ITEMS 6,7,8,9 ADDED	JUNE 28/66		GM		

REQ.	ITEM	PART NO.	DESCRIPTION	SYMBOL
12	1	SCFP08-32.BN6	SCREW, MACHINE, FLAT HEAD	
4	2	MS10698	BAR, BUSS	
1	3	MS10699	PLATE, BUSS BAR INSULATING	
1	4	MS10700	PLATE, INSULATING	
48	5	SCBP0832.BN6	SCREW, MACHINE, BINDER HEAD	
96	6	FW08.HBN	WASHER, FLAT	
44	7	BURNDY YBV14	CONNECTOR,	
44	8	BURNDY CYB	INSULATOR	
4	9	BURNDY AEV8CL	CONNECTOR	



NOTE:
 MOUNT ITEM 9 ON SCREWS MARKED *
 MOUNT ITEM 7 & 8 ON REMAINING SCREWS

TOLERANCES		SCALE: 1:1
ALL OTHERS	DEC. DIM. ± .05 FRAC. DIM. ± 1/64 XXX = -.01 ANGULAR DIM. ± 1/2° XXX = -.005	DRILL, PUNCH, COMMERCIAL STOCK SIZES AND MANUFACTURERS TOLERANCES ARE NOT INCLUDED.

ACG10001	050/66		MAY 12/66
MODEL	PROJECT NO.	ASSY. NO.	DATE

STOCK SIZE		TMC (Canada) LIMITED OTTAWA ONTARIO	
MATERIAL		ASSEMBLY, DISTRIBUTION BLOCK	
WEIGHT PER PC.			
TYPE & TEMPER		GAM	
HEAT TREAT. SPEC.		DRAWN: [Signature] ELEC. DES. APP. [Signature] MECH. DES. APP.	
FINISH & SPEC. NO.		CHECKED: AUBREY FINAL APPROVAL: [Signature]	
		A-10472 A	