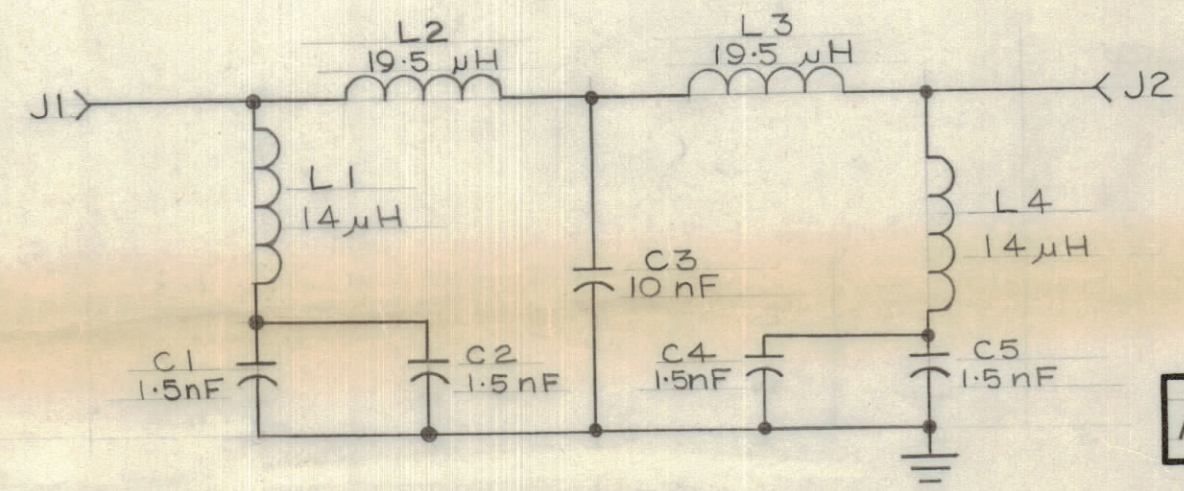
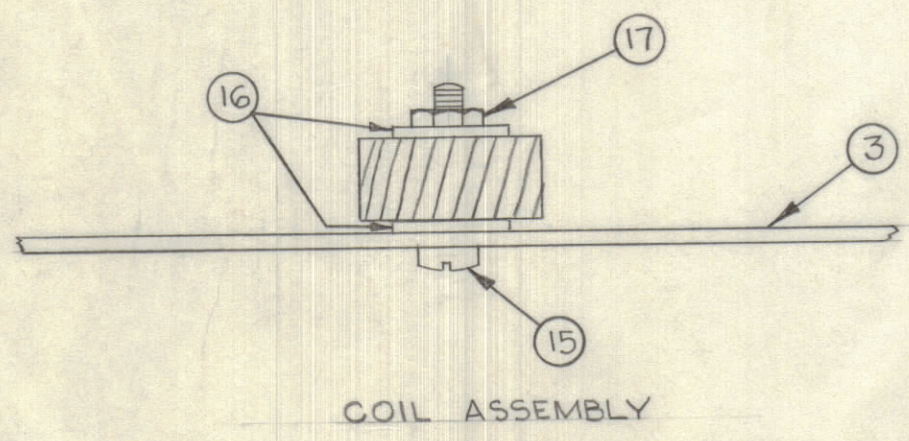
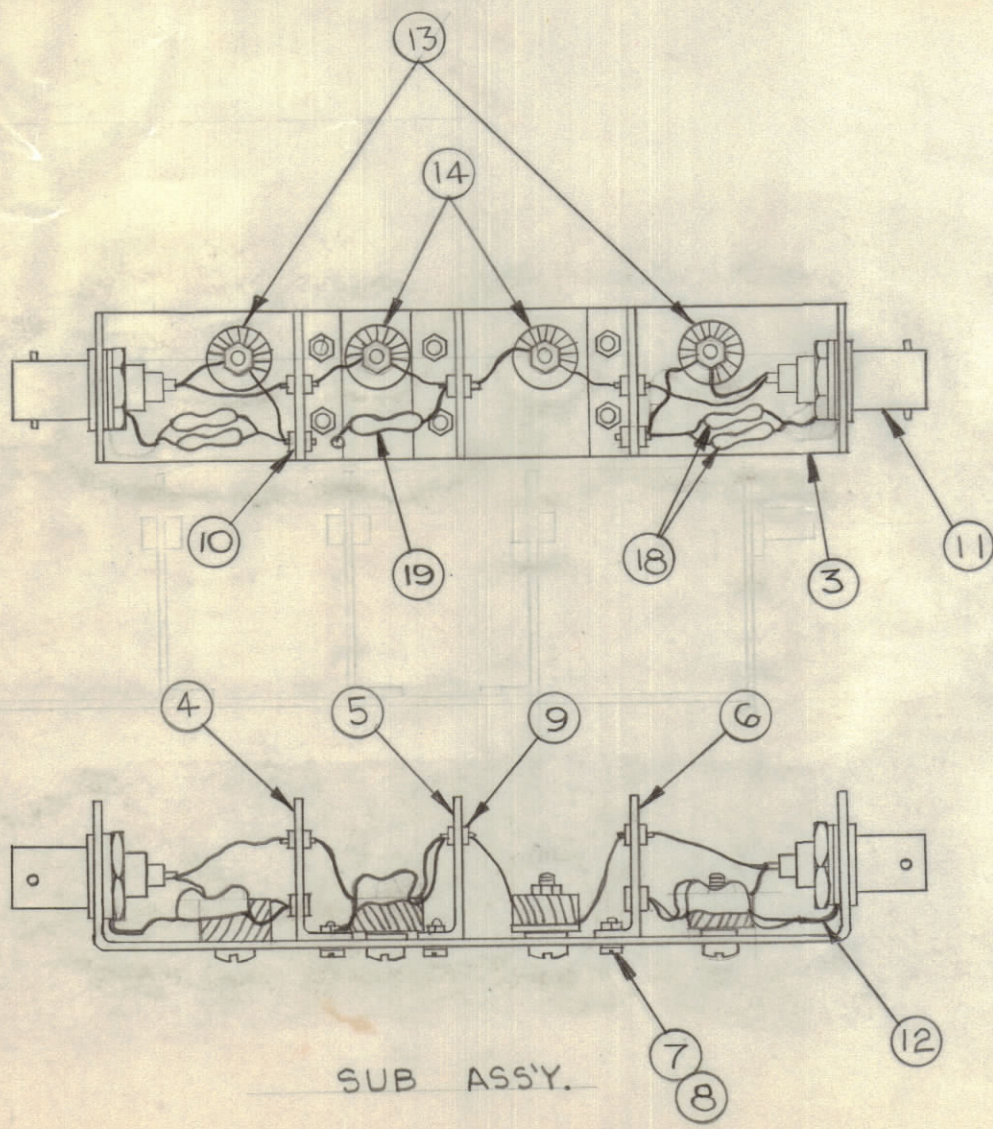


IF IT IS FOUND DESIRABLE TO CHANGE ANY TOLERANCE OR OTHER DETAIL SPECIFIED ON THIS DRAWING NOTIFY THE PURCHASER PROMPTLY.

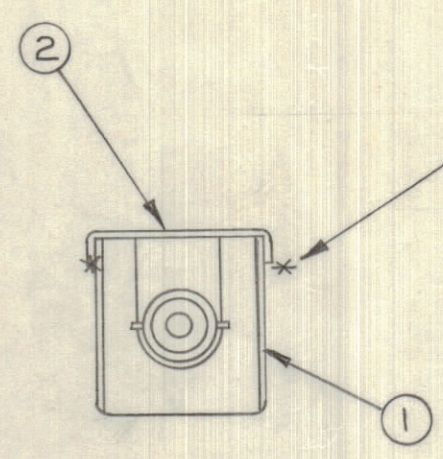
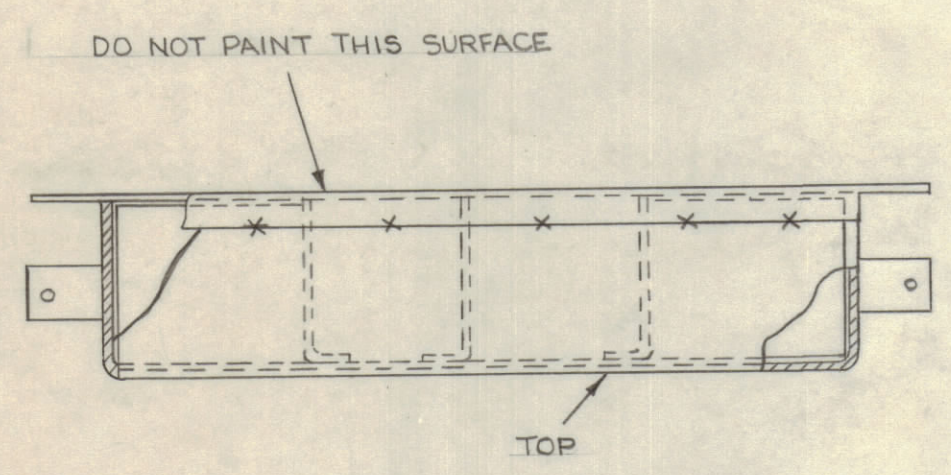
MAXIMUM ALLOWABLE TOLERANCES HAVE BEEN DETERMINED AND DEVIATIONS WILL BE CAUSE FOR REJECTION. REMOVE ALL BURRS AND SHARP EDGES.

DIMENSIONS IN INCHES UNLESS OTHERWISE SPECIFIED

ISSUE	ITEM	CHANGED FROM	DATE	CN. NO.	DRAFTS	CHECKER	ENG. APP.
Ø		REL. TO PROD.	3-5-66		RD		



REQ.	ITEM	PART NO.	DESCRIPTION	SYMBOL
1	1	MS 3944	CASE, FIL.	
1	2	MS 3945	PLATE, BOTTOM	
1	3	MS 3947	CHASSIS, SUB	
1	4	MS 3943	SHEILD, R.F.	
1	5	MS 3946	SHEILD, R.F.	
1	6	MS 4112	SHEILD, R.F.	
6	7	SCBP0256BN4	SCREW, MACHINE	
6	8	LW502MRN	WASHER, LOCK, SPLIT	
3	9	TE193B459	TERMINAL, F.D., THRU, INS.	
2	10	TE192A3R9	TERMINAL, STUD, INS.	
2	11	UG 625 /U	CONNECTOR, RECEPTACLE	J1,2
2	12	TE 111-2	TERMINAL, LUG	
2	13	CL10030-1	COIL, RF	L1,4
2	14	CL10030-2	COIL, RF	L2,3
4	15	SC143-0632B10	SCREW, MACHINE, NYLON	
8	16	FW101-5	WASHER, NM, NYLON	
4	17	NT137-0632	NUT, PLAIN, HEX, NYLON	
4	18	CM112F152F35	CAPACITOR, FIXED, MICA	C1,2,4,5
1	19	CM112F103J15	CAPACITOR, FIXED, MICA	C3
A.R.	20	BS-100	SOLDER, TIN ALLOY	



- SEE PROCEDURE #9
- ASSEMBLY PROCEDURE
1. PRESS ITEMS 9 & 10 INTO ITEMS 4, 5, & 6 AS SHOWN
 2. ASSEMBLE ITEMS 11, 12, 4, 5, & 6 TO ITEM 3 AS SHOWN, USING ITEMS 7 & 8.
 3. ASSEMBLE ITEMS 13 & 14 USING ITEMS 15, 16, 17, 13 & 20 AS SHOWN.
 4. CONNECT ITEMS 13 & 14 (SEE CK 81), CONNECT ITEMS 18 & 19 AND POSITION AS SHOWN. GROUND LEAD OF 19 IS SOLDERED DIRECTLY TO CHASSIS.
 5. PLACE COMPLETE SUB-ASSEMBLY INTO ITEM 1 AS SHOWN.
 6. PLACE ITEM 2 OVER ITEM 1 AND TEST.
 7. SOLDER AT SEAMS INDICATED BY * AND RETEST.
 8. MASK ITEM 11 AND BOTTOM SURFACE & PAINT TMC GREY PER 5115 ALLOVER.
 9. MARK TOP OF CASE AS SHOWN IN BLACK.



SEE PROCEDURE #9

FINAL ASSY.

STOCK SIZE		TMC (Canada) LIMITED OTTAWA ONTARIO	
		ASSEMBLY, FX10016	
MATERIAL	WEIGHT PER PC.	GAM	
		DRAWN	ELEC. DES. APP. MECH. DES. APP.
		CHECKED	FINAL APPROVAL
		JUTASI	
		A-10465 Ø	

MODEL	PROJECT NO.	ASSY. NO.	DATE
VLRE-1	035/66		MAY 3/66

TOLERANCES		SCALE: NTS
ALL OTHERS	DEC. DIM. ± FRAC. DIM. ± ANGULAR DIM. ±	DRILL, PUNCH, COMMERCIAL STOCK SIZES AND MANUFACTURERS TOLERANCES ARE NOT INCLUDED.