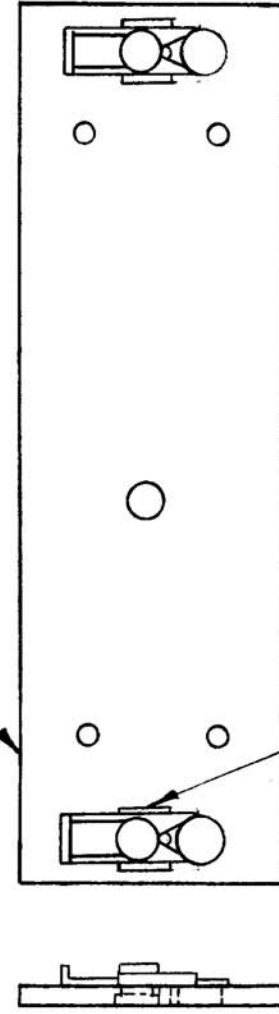


A16428

| ISSUE | ITEM | CHANGED FROM | DATE    | CN. NO. | DRAFTS | CHECKER | ENG. APP. | REQ. | ITEM | PART NO.  | DESCRIPTION                    | SYMBOL |
|-------|------|--------------|---------|---------|--------|---------|-----------|------|------|-----------|--------------------------------|--------|
| Ø     |      | REL. TO PROD | 29-3-66 |         |        |         |           | 2    | 1    | FS119-2   | LATCHGUIDE, SNAPSIDE, FASTENER |        |
|       |      |              |         |         |        |         |           | 2    | 2    | FS118-1   | LATCH, SNAPSIDE, FASTENER      |        |
|       |      |              |         |         |        |         |           | 4    | 3    | WA-131-22 | WASHER, SPRING, TENSION        |        |
|       |      |              |         |         |        |         |           | 2    | 4    | FS 120-1  | POST, SNAPSIDE, FASTENER       |        |
|       |      |              |         |         |        |         |           | 1    | 5    | MS10687   | PANEL, FRONT                   |        |

**CANCELLED**  
 REFER TO MS 10687



ES:  
 - ZINC CHROMATE PRIMER  
 - SMOOTH GRAY ENAMEL

|  |   |                        |   |                                 |  |
|--|---|------------------------|---|---------------------------------|--|
| TTRT   |   | 005/66                 |   | MAR. 29/66                      |  |
| MODEL  | PROJECT NO.   | ASSY. NO.              | DATE  |                                 |  |
| USED ON  |   |                        |   |                                 |  |
| MAXIMUM ALLOWABLE TOLERANCES HAVE BEEN DETERMINED AND DEVIATIONS WILL BE CAUSE FOR REJECTION. REMOVE ALL BURRS AND SHARP EDGES |   |                        | IF IT IS FOUND DESIRABLE TO CHANGE ANY TOLERANCE OR OTHER DETAIL SPECIFIED ON THIS DRAWING NOTIFY THE PURCHASER PROMPTLY. |                                 |  |
|  |   |                        |   |                                 |  |
| TOLERANCES   |   |                        | HEAT TREAT. SPEC.   |                                 |  |
| DEC. DIM. ±  | DIMENSIONS IN INCHES  |                        | <b>SEE NOTE</b><br>FINISH & SPEC. NO.   |                                 |  |
| FRAC. DIM. ±   | UNLESS OTHERWISE SPECIFIED  |                        |   |                                 |  |
| ANGULAR DIM. ±   | DRILL, PUNCH, COMMERCIAL STOCK SIZES AND MANUFACTURERS TOLERANCES ARE NOT INCLUDED. |                        |   |                                 |  |
| TMC (Canada) LIMITED<br>OTTAWA   |   | ASSEMBLY, PANEL, FRONT |   |                                 |  |
| GAM  |   | DRAWN<br>PAP           |   | ELEC. DES. APP. MECH. DES. APP. |  |
| PLUMMER  |   | CHECKED                |   | FINAL APPROVAL                  |  |
| Ø  |   | A10428                 |   |                                 |  |