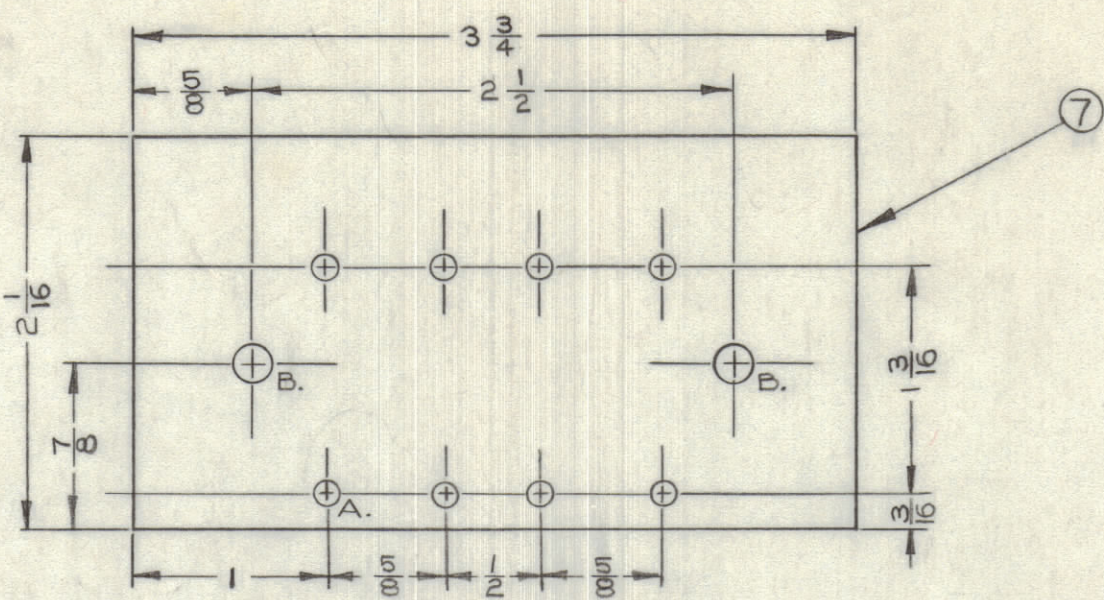
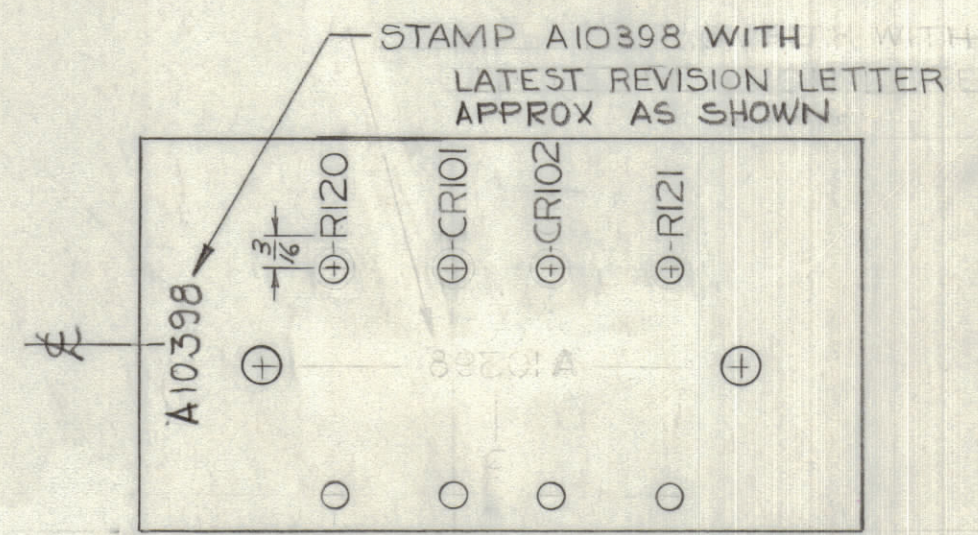


IF IT IS FOUND DESIRABLE TO CHANGE ANY TOLERANCE OR OTHER DETAIL SPECIFIED ON THIS DRAWING NOTIFY THE PURCHASER PROMPTLY.		DIMENSIONS IN INCHES UNLESS OTHERWISE SPECIFIED					
MAXIMUM ALLOWABLE TOLERANCES HAVE BEEN DETERMINED AND DEVIATIONS WILL BE CAUSE FOR REJECTION. REMOVE ALL BURRS AND SHARP EDGES.							
ISSUE	ITEM	CHANGED FROM	DATE	CN. NO.	DRAFTS	CHECKER	ENG. APP.
Ø		REL. FOR PROD.	26-1-66		GM		
A		ITEM 7 PART NO. ADDED	27-1-66		GM		
B		DIM'S ADDED, STAGE 2	4-3-66		RD		
C		LET. WAS BLACK	5-4-66		RD		
D		REV PER CEMN	14 FEB 73	1220	JWM	HCS	SDW



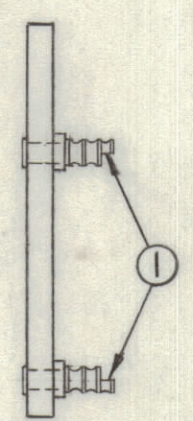
A.-NO 32 DRILL (116D) 8 REQ.
B.-1/16 (171D) 2 REQ.

STAGE 1 (MACHINING)



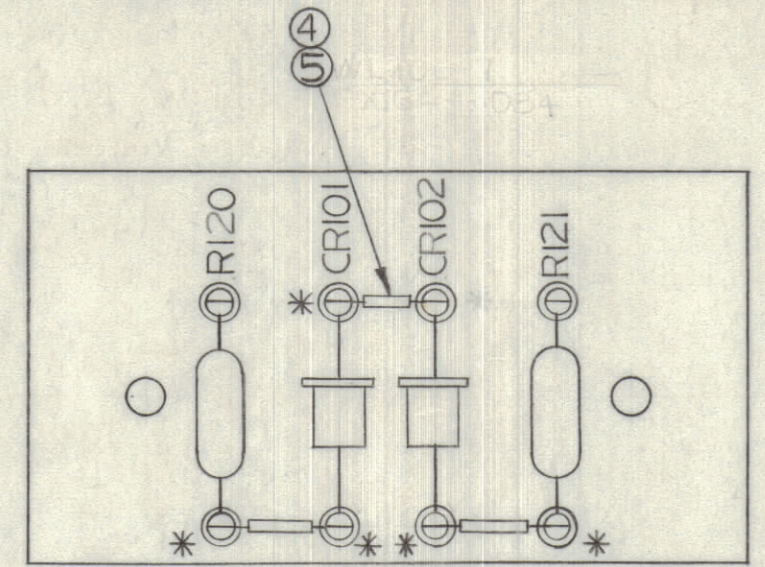
LETTERING TO BE 1/8 HIGH WHITE GOTHIC MARKING PROCESS AS PER TMC SPECIFICATION (S727)

STAGE 2 (STAMPING)



STAGE 3 (MECH. ASSY.)

NOTE: ON THIS ASSY., SOLDER ONLY THOSE CONNECTIONS MARKED*. ALL OTHER SOLDERING MUST BE DONE UPON ASSY. OF TERMINAL BD. INTO THE MAIN UNIT.



STAGE 4 ELECTRICAL ASSY.

A10398 D

TOLERANCES	SCALE: FULL SIZE
ALL OTHERS	DRILL, PUNCH, COMMERCIAL STOCK SIZES AND MANUFACTURERS TOLERANCES ARE NOT INCLUDED.
DEC. DIM. ± 1/64	
FRAC. DIM. ± 1/64	
ANGULAR DIM. ±	

PSP-500	028/66	26-1-66
MODEL	PROJECT NO.	DATE
	ASS'Y. NO.	

REQ.	ITEM	PART NO.	DESCRIPTION	SYMBOL
8	1	TE10003-1	TERMINAL, SOLDER	
2	2	RW123-100J	RESISTOR WW	R120 R121
2	3	RX10004	RECTIFIER	CR101 CR102
A.R.	4	PX104-1-034	SLEEVING, BLACK	
A.R.	5	WL100-7	WIRE, BUSS	
A.R.	6	B5-100	SOLDER, SOFT	
1	7	A-10398-1	PHENOLIC, XXXP	1/8THK.

STOCK SIZE		TMC (Canada) LIMITED OTTAWA ONTARIO	
MATERIAL		TERMINAL BOARD (ALL STAGES)	
WEIGHT PER PC.		TB103	
TYPE & TEMPER		GAM	
HEAT TREAT. SPEC.		DRWN	ELEC. DES. APP.
FINISH & SPEC. NO.		CHECKED	MECH. DES. APP.
		FINAL APPROVAL	
		A10398 D	