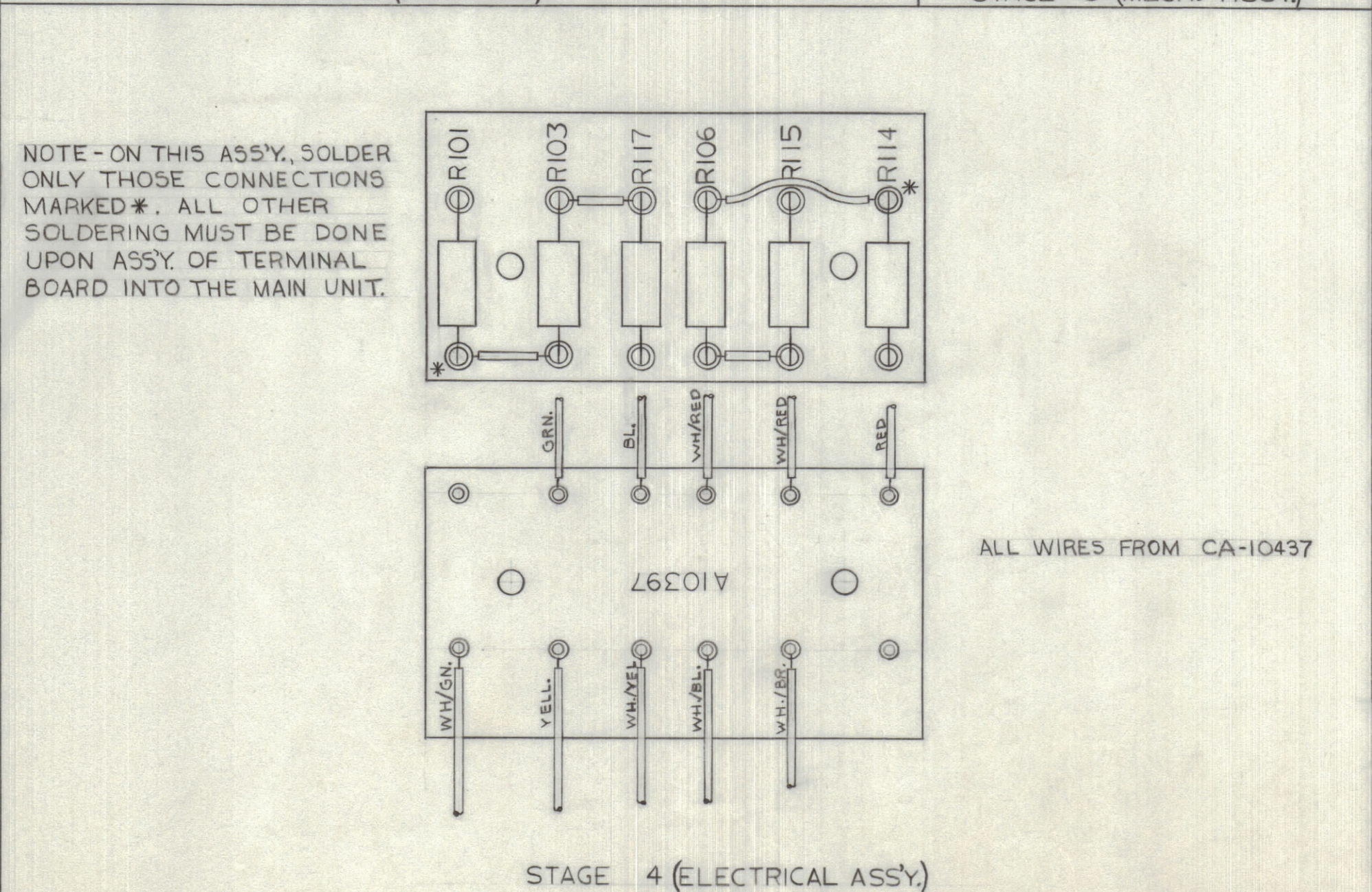
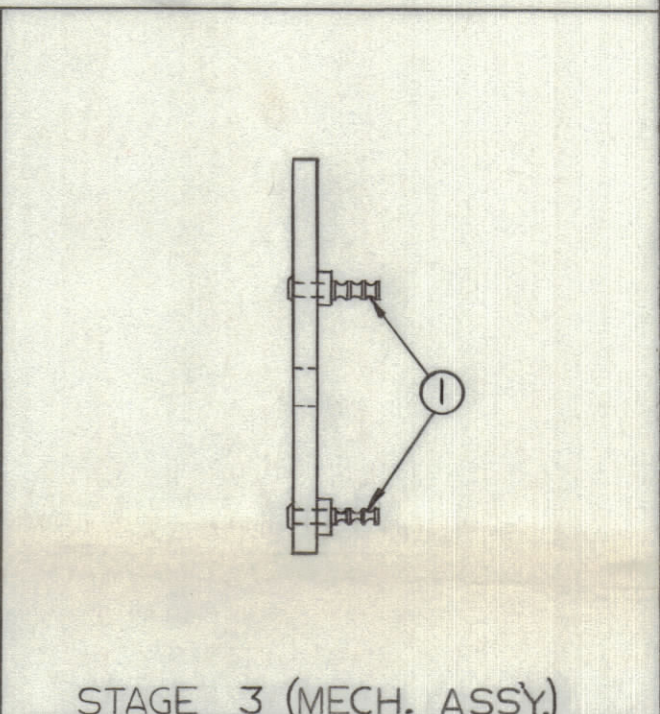
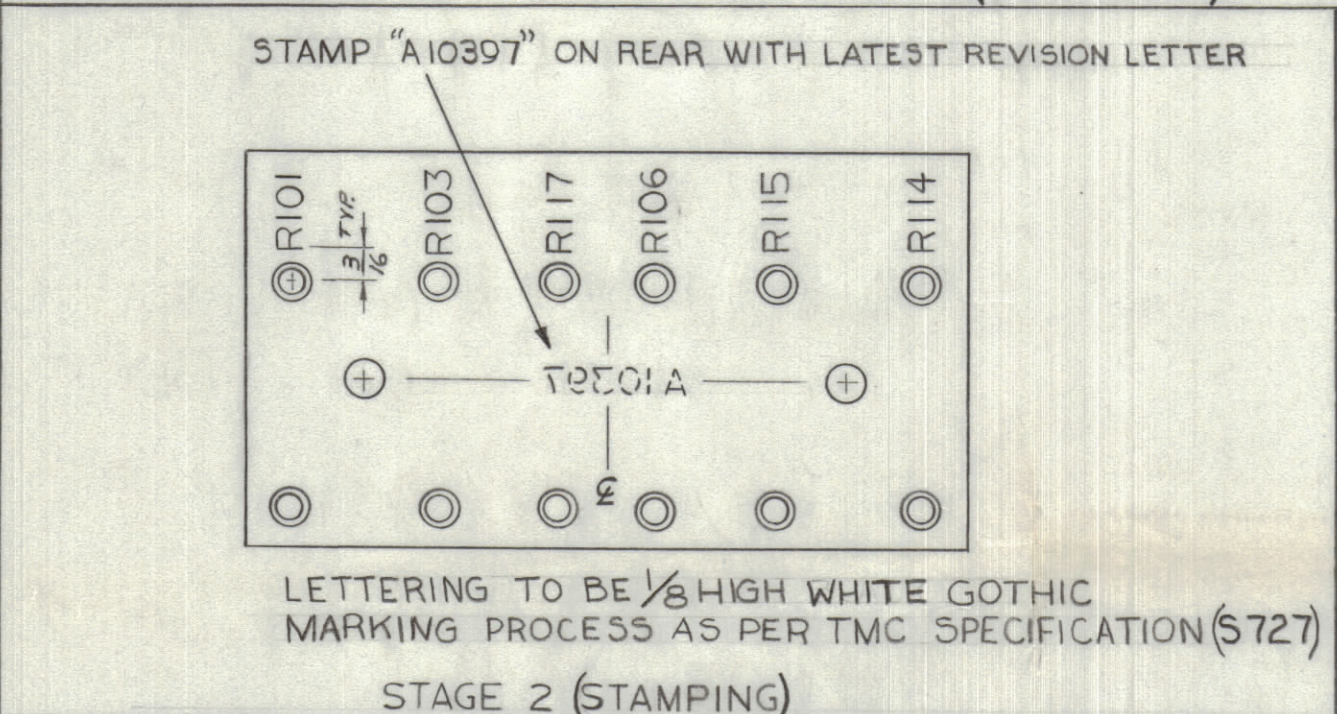
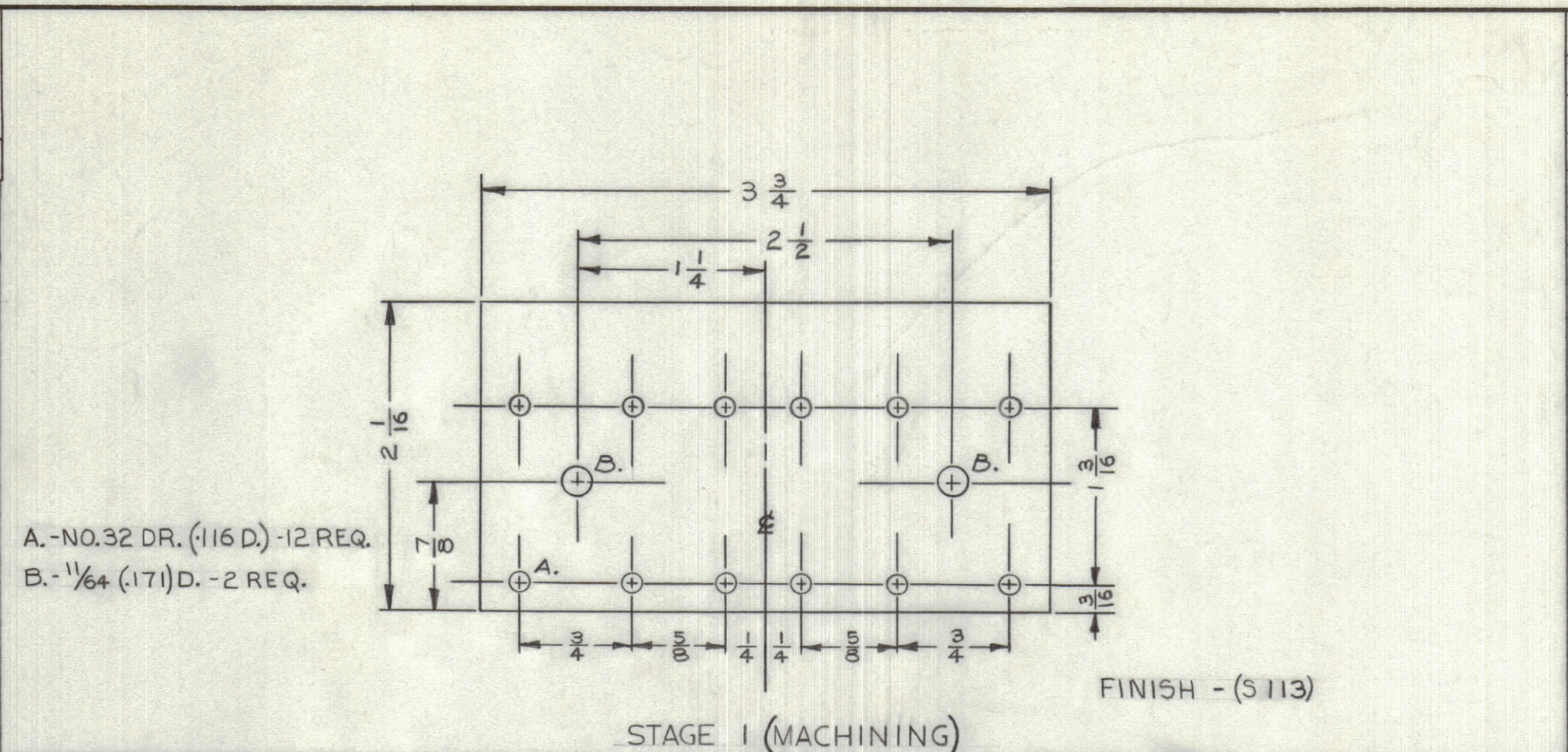


IF IT IS FOUND DESIRABLE TO CHANGE ANY TOLERANCE OR OTHER DETAIL SPECIFIED ON THIS DRAWING NOTIFY THE PURCHASER PROMPTLY.		DIMENSIONS IN INCHES UNLESS OTHERWISE SPECIFIED					
MAXIMUM ALLOWABLE TOLERANCES HAVE BEEN DETERMINED AND DEVIATIONS WILL BE CAUSE FOR REJECTION. REMOVE ALL BURRS AND SHARP EDGES.		OTHERWISE SPECIFIED					
ISSUE	ITEM	CHANGED FROM	DATE	CN. NO.	DRAFTS	CHECKER	ENG. APP.
Ø		REL. FOR PROD.	26-1-66		GM		<i>[Signature]</i>
A		DIM'S ADDED, STAGE 2	4-3-66		RD		<i>[Signature]</i>
B		ITEM 4 WAS RC42GF430J & ALL J'S WERE K'S	MNR. 8/66		RPL		<i>[Signature]</i>
C		LET. WAS BLACK	5-4-66		RD		<i>[Signature]</i>



REQ.	ITEM	PART NO.	DESCRIPTION	SYMBOL
12	1	TE-10003-1	LUG, TERMINAL	
1	2	RC42GF222J	RESISTOR, FIXED, COMP	R101
1	3	RC42GF104J	" " "	R103
1	4	RC42GF430J	" " "	R117
1	5	RC42GF560J	" " "	R106
1	6	RC42GF224J	RESISTOR, FIXED, COMP.	R114
X	7	WL-100-7	WIRE, BUSS	
X	8	PX104-1-034	INSULATION, SLEEVING	BLK
X	9	B5-100	SOLDER, SOFT	
1	10	RW-107-11	RESISTOR, FIXED, W.W.	R115
1	11	A10397-1	PHENOLIC XXXP 1/8 THK	

A10397 C

TOLERANCES		SCALE: FULL SIZE
ALL OTHERS	DEC. DIM. ± 1/64 FRAC. DIM. ± 1/64 ANGULAR DIM. ±	DRILL, PUNCH, COMMERCIAL STOCK SIZES AND MANUFACTURERS TOLERANCES ARE NOT INCLUDED.

PSP-500	028/66	24-1-66
MODEL	PROJECT NO.	ASS'Y. NO.
USED ON		

1/8 THK.	TMC (Canada) LIMITED OTTAWA ONTARIO	
STOCK SIZE	TERMINAL BOARD (ALL STAGES)	
XXX P	TB102	
MATERIAL	WEIGHT PER PC.	
LE	GAM	
TYPE & TEMPER	DRAWN	ELC. DES. APP.
	<i>[Signature]</i>	<i>[Signature]</i>
HEAT TREAT. SPEC.	CHECKED	FINAL APPROVAL
NATURAL		
FINISH & SPEC. NO.	A10397 C	