

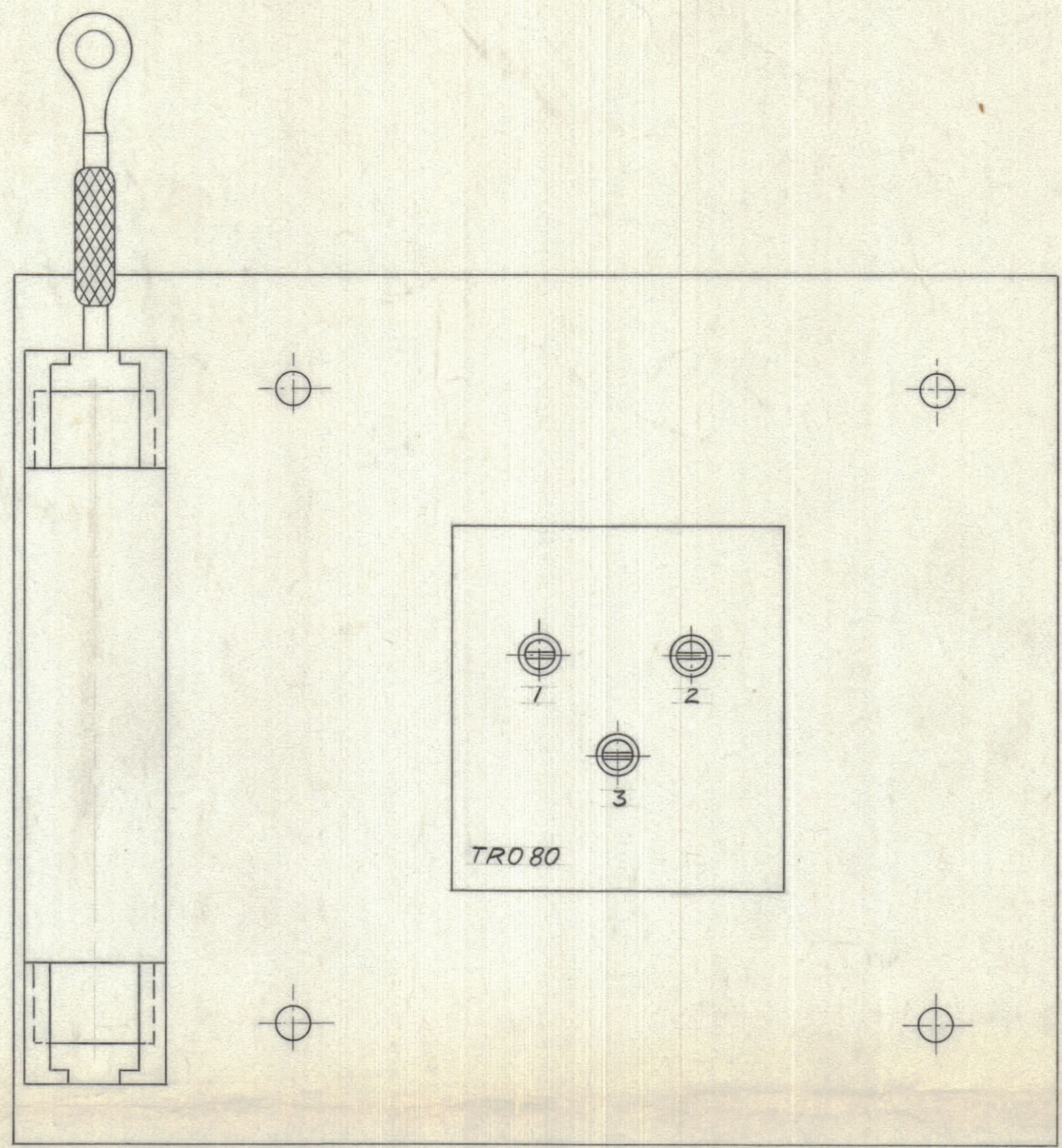
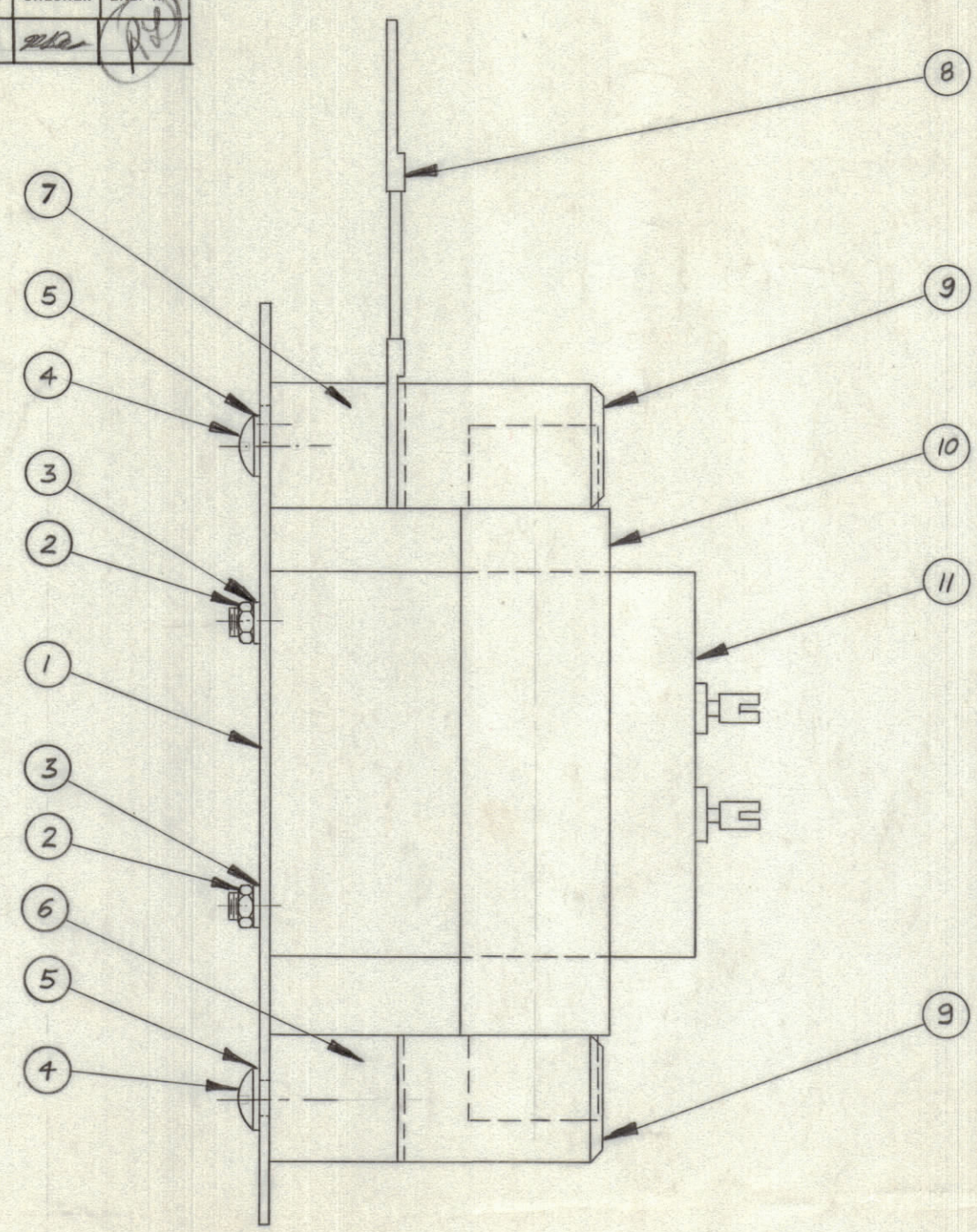
IF IT IS FOUND DESIRABLE TO CHANGE ANY TOLERANCE OR OTHER DETAIL SPECIFIED ON THIS DRAWING NOTIFY THE PURCHASER PROMPTLY.

DIMENSIONS IN INCHES UNLESS OTHERWISE SPECIFIED

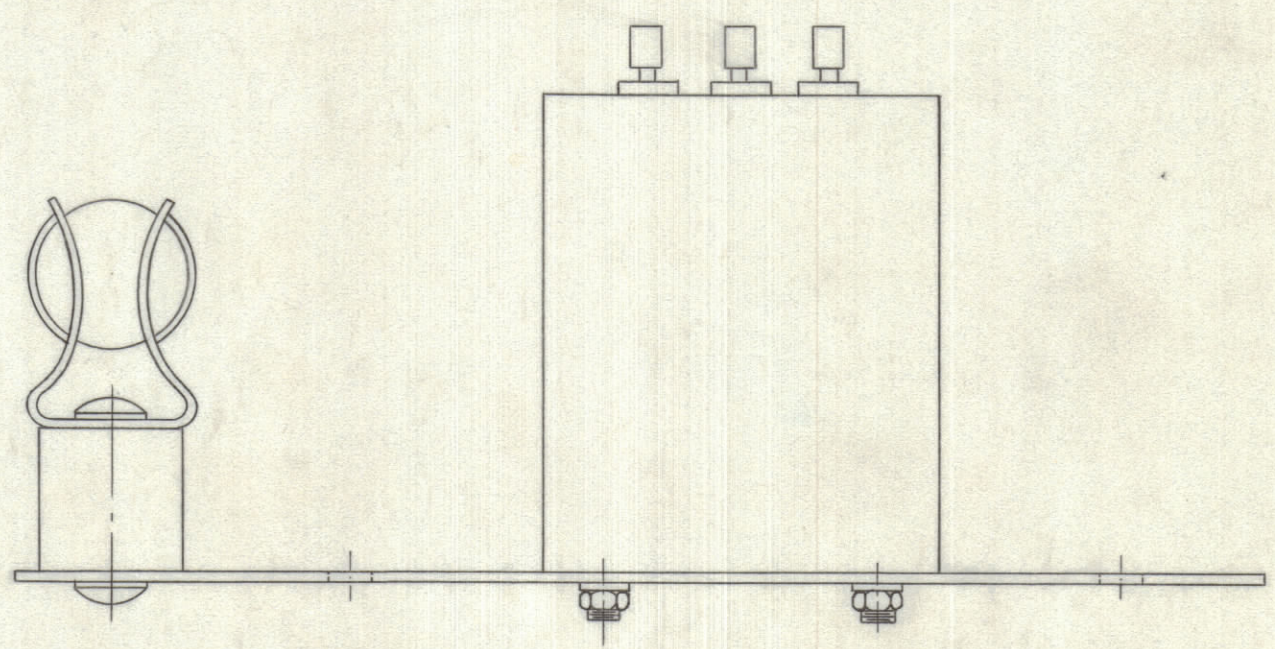
MAXIMUM ALLOWABLE TOLERANCES HAVE BEEN DETERMINED AND DEVIATIONS WILL BE CAUSE FOR REJECTION. REMOVE ALL BURRS AND SHARP EDGES.

ISSUE	ITEM	CHANGED FROM	DATE	CN. NO.	DRAFTS	CHECKER	ENG. APP.
A		ARROWHEADS ADDED	MAY 10/66		GM	<i>[Signature]</i>	<i>[Signature]</i>

REQ.	ITEM	PART NO.	DESCRIPTION	SYMBOL
------	------	----------	-------------	--------



A 10 363 A



REQ.	ITEM	PART NO.	DESCRIPTION	SYMBOL
1	11	TRO 80	TRANSFORMER R/F	
1	10	SW-176	LIGHTNING ARRESTOR	
2	9	FH-102	FUSE CLIP	
1	8	CA 409-23-2.00	LEAD, ELECTRICAL	
1	7	NS 3 W 0306	INSULATOR, STANDOFF	
1	6	TE 1032 BN 62R	SPACER, THREADED	
4	5	LWE 10 MRN	WASHER, LOCK, EXTERNAL	
4	4	SCBP 1032 BN 6	SCREW, MACHINE	
4	3	LWE 06 MRN	WASHER, LOCK	
4	2	NTH 0632 BN 8	NUT, HEX	
1	1	MS 10 589	MOUNTING PLATE	

TOLERANCES: DEC. DIM. ±, FRAC. DIM. ±, ANGULAR DIM. ±

SCALE: 1:1

DRILL, PUNCH, COMMERCIAL STOCK SIZES AND MANUFACTURERS TOLERANCES ARE NOT INCLUDED.

MODEL	PROJECT NO.	ASS'Y. NO.	DATE
VRA-11	026/65	A 10 361	2-6-1965

STOCK SIZE		TMC (Canada) LIMITED OTTAWA ONTARIO	
MATERIAL		TRANSFORMER MOUNTING PLATE	
WEIGHT PER PC.		ASS'Y.	
TYPE & TEMPER		Drawn	<i>[Signature]</i>
HEAT TREAT. SPEC.		ELEC. DES. APP.	MECH. DES. APP.
FINISH & SPEC. NO.		CHECKED	FINAL APPROVAL
		A 10 363 A	