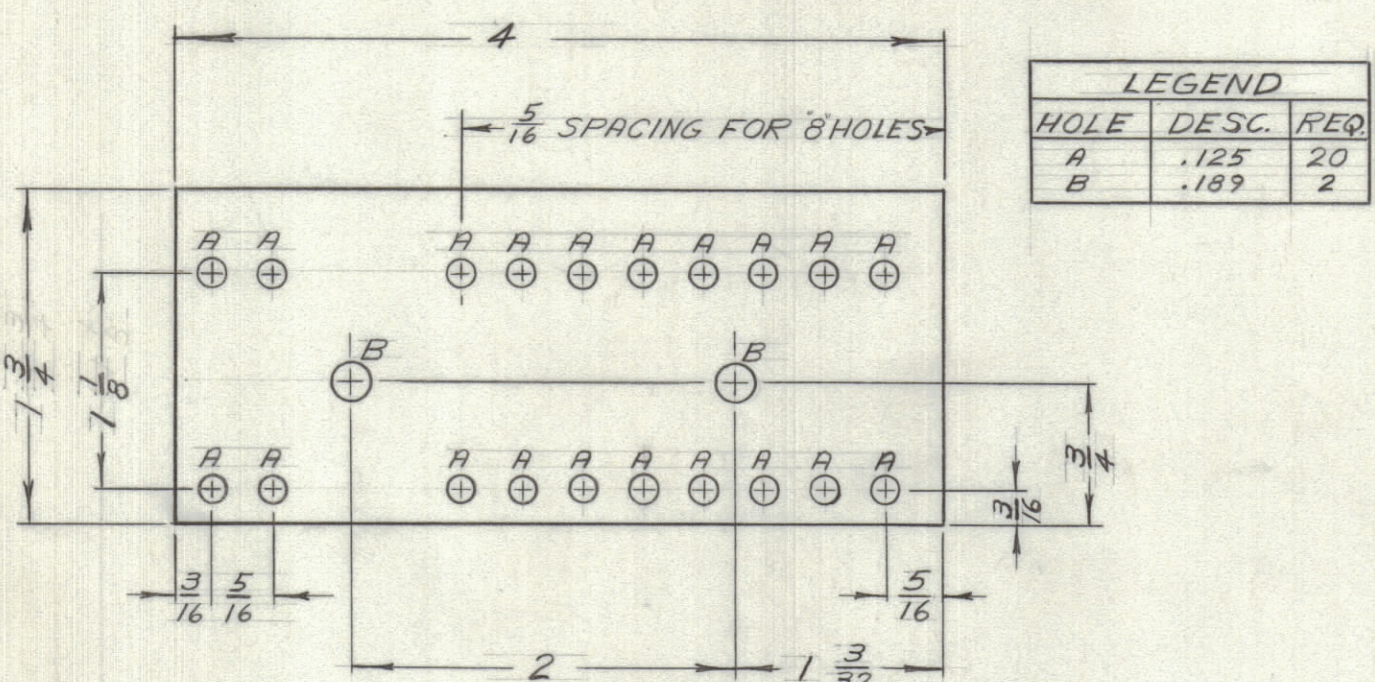


IF IT IS FOUND DESIRABLE TO CHANGE ANY TOLERANCE OR OTHER DETAIL SPECIFIED ON THIS DRAWING NOTIFY THE PURCHASER PROMPTLY.		DIMENSIONS IN INCHES UNLESS OTHERWISE SPECIFIED					
MAXIMUM ALLOWABLE TOLERANCES HAVE BEEN DETERMINED AND DEVIATIONS WILL BE CAUSE FOR REJECTION. REMOVE ALL BURRS AND SHARP EDGES.		OTHERWISE SPECIFIED					
ISSUE	ITEM	CHANGED FROM	DATE	CN. NO.	DRAFTS	CHECKER	ENG. APP.

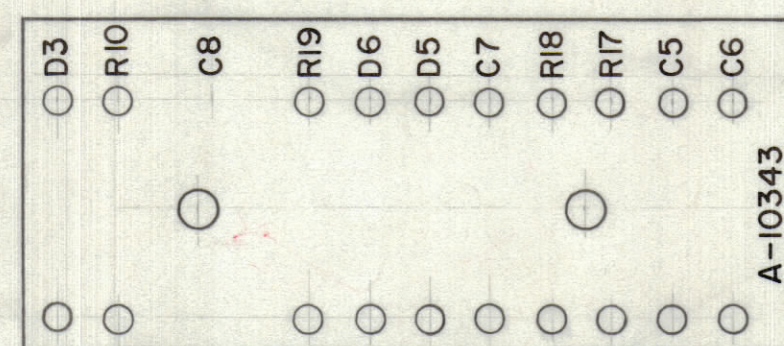
REQ.	ITEM	PART NO.	DESCRIPTION	SYMBOL
20	1	TE-10003-1	TERMINAL, SOLDER	
2	2	TE-108-13	STAND OFF, RIVET TYPE	
3	3	1N-478	DIODE	D3, D5, D6
3	4	RC20GF224K	RESISTOR, FIXED COMPS'N	R17, R18, R19
1	5	RC32GF273K	RESISTOR, FIXED COMPS'N	R10
2	6	CC-10002-1	CAPACITOR, DISC, CERAMIC	C5, C7
1	7	CC-100-15	CAPACITOR, DISC, CERAMIC	C6
1	8	CN-10005-3	CAPACITOR, PAPER	C8
AR	9	WL-100-7	WIRE, #22 TINNED BUSS	
AR	10	PX-100-1-034	INSULATION, SLEEVING, BLACK	
AR	11	PX-100-2-034	INSULATION, SLEEVING, RED	
AR	12	PX-100-5-034	INSULATION, SLEEVING, GREEN	
AR	13	PX-100-6-034	INSULATION, SLEEVING, BLUE	



MATERIAL: 1/8" THK, XXXP PHENOLIC

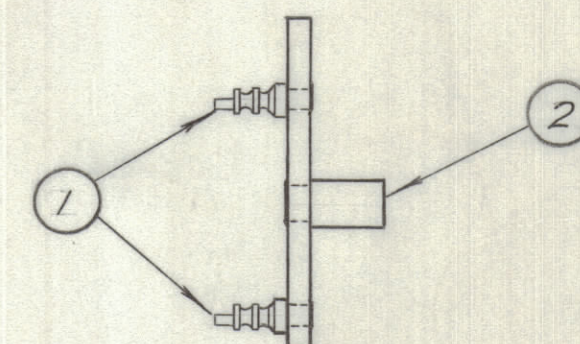
TOL: ± 1/64

A-10343-1

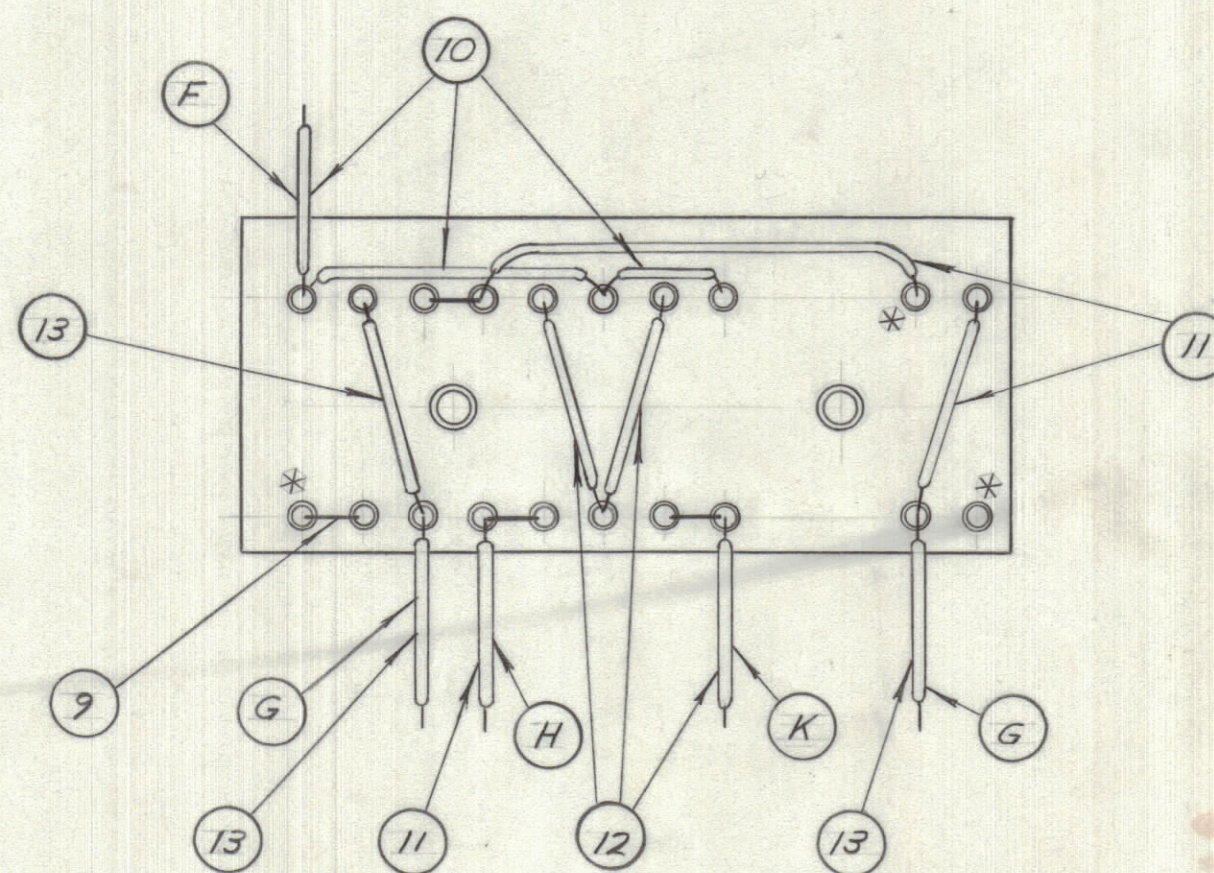
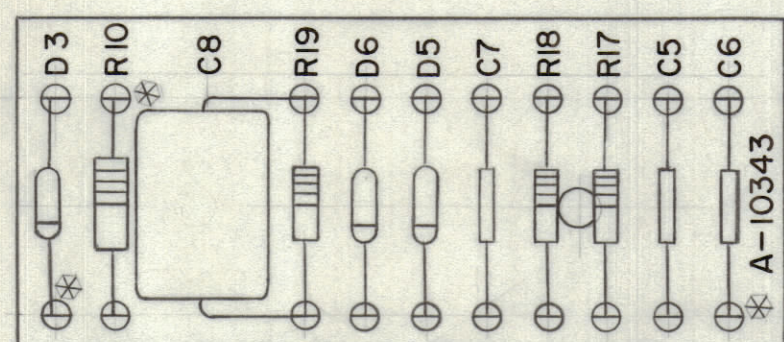


LETTERING: 1/8 INCH HIGH, BLACK LUSTERLESS GOTHIC
MARKING PROCESS: AS PER TMC SPEC. S-727

A-10343-2



A-10343-3



INSULATED SLEEVING

WIRE	REQ.	LENGTH	ITEM NO.
F	1	2 1/2	10
G	2	2 1/2	13
H	1	2	11
K	1	2 3/4	12

NOTES:

- BAND ON DIODE USED TO INDICATE END OF DIODE WITH RED MARKING
- WIRE OF LEADS TO EXTEND 3/4" BEYOND SLEEVING
- * LEAVE UNSOLDERED

A-10343-4

TOLERANCES		SCALE:
ALL OTHERS	DEC. DIM. ± FRAC. DIM. ± ANGULAR DIM. ±	DRILL, PUNCH, COMMERCIAL STOCK SIZES AND MANUFACTURERS TOLERANCES ARE NOT INCLUDED.

MID 3 SPL.			20-11-63
MODEL	PROJECT NO.	ASS'Y. NO.	DATE
USED ON			

STOCK SIZE		TMC (Canada) LIMITED OTTAWA ONTARIO	
MATERIAL		TERMINAL BOARD	
WEIGHT PER PC.		NO. 2	
TYPE & TEMPER		RD	4
		DRAWN	ELEC. DES. APP. MECH. DES. APP.
HEAT TREAT. SPEC.		CHECKED	FINAL APPROVAL
FINISH & SPEC. NO.		A-10343	