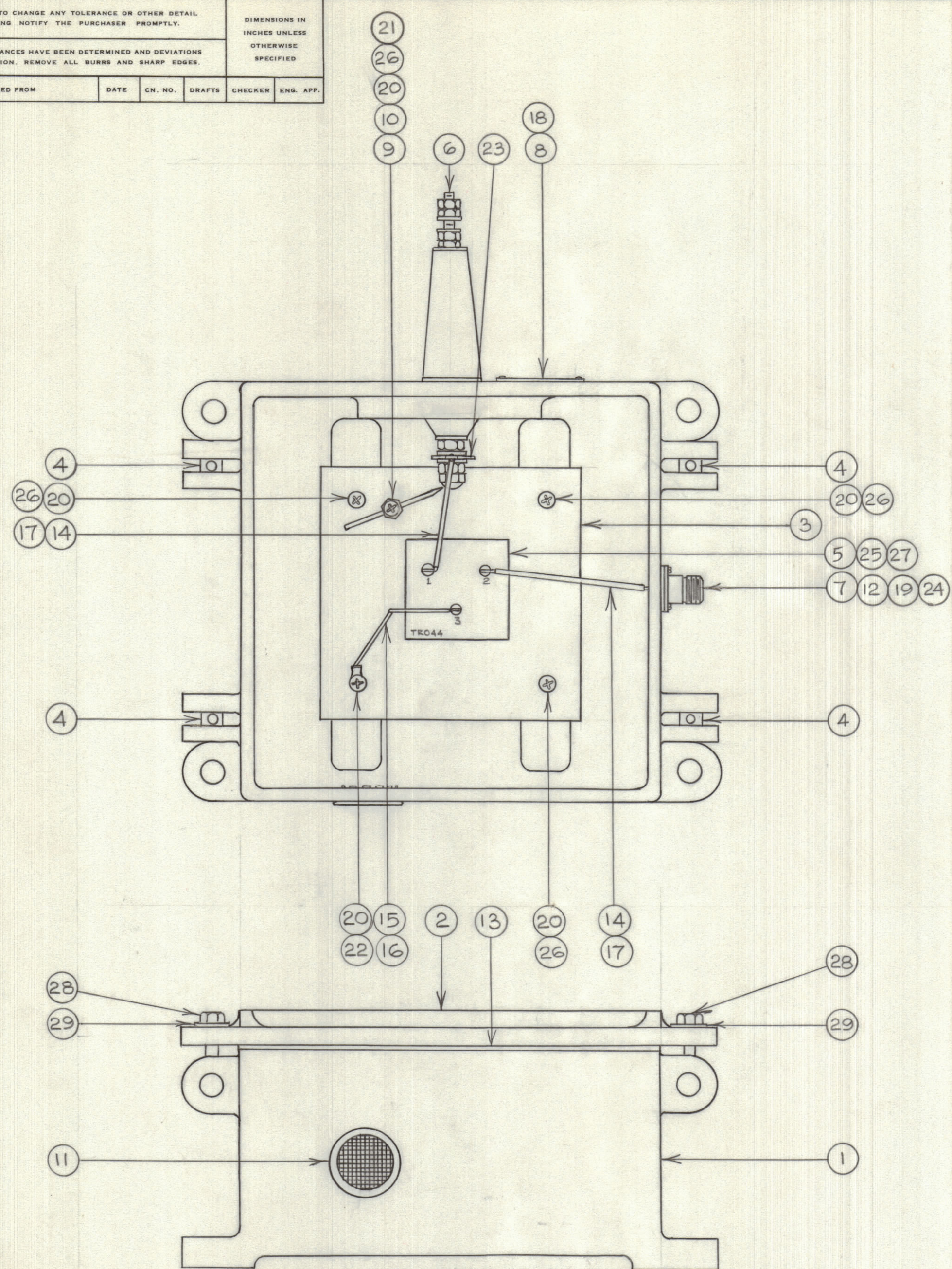


IF IT IS FOUND DESIRABLE TO CHANGE ANY TOLERANCE OR OTHER DETAIL SPECIFIED ON THIS DRAWING NOTIFY THE PURCHASER PROMPTLY.

MAXIMUM ALLOWABLE TOLERANCES HAVE BEEN DETERMINED AND DEVIATIONS WILL BE CAUSE FOR REJECTION. REMOVE ALL BURRS AND SHARP EDGES.

DIMENSIONS IN INCHES UNLESS OTHERWISE SPECIFIED

ISSUE	ITEM	CHANGED FROM	DATE	CH. NO.	DRAFTS	CHECKER	ENG. APP.



REQ.	ITEM	PART NO.	DESCRIPTION	SYMBOL
1	1	PM-10079	Case, machining, REF: CS-101	
1	2	PM-105	Cover, machining REF:CS-100	
1	3	MS-10551	Mounting Plate	
4	4	PM-100	Pin, Cover Bolt	
1	5	TR-044	Transformer, REF: A-1012	
1	6	A-102	Insulator Assembly	
1	7	SO-239	Connector, Receptacle	
1	8	NP-10060	Nameplate	
1	9	PM721-2BNI.875	Post, Spark Rod	
1	10	PM-103	Spark Rod	
1	11	HB-III-1	Button, Plug	
1	12	GA-106	Gasket for SO-239	
1	13	GA-103	Gasket - Cover	
AR	14	WL-100-1	Wire, Buss-Bar, Tinned	
AR	15	WL-100-4	Wire, Buss-Bar, Tinned	
AR	16	PX-100-1.034	Insulation, Sleeving	
AR	17	PX-100-1.106	Insulation, Sleeving	
4	18	SFBO256SN3	Screw, Machine, u/o NP-10060	
4	19	SCBP0440BN5	Screw, u/o SO-239	
5	20	SCBP0832BN5	Screw, u/o PM-721 & MS-10551	
1	21	SCBP0832BN12	Screw, u/o PM-721	
1	22	TE-104-4	Solder, Lug u/o MS-10551	
1	23	TE-129	Solder, Lug u/o A-102	
4	24	LWS04MRN	Lockwasher, Split u/o SO-239	
4	25	LWS06MRN	Lockwasher, Split u/o TR044	
4	26	LWS08MRN	Lockwasher, Split u/o PM-721 & MS-10551	
4	27	NTH0632BN8	Nut, Hexagon u/o TR-044	
4	28	SC-108-9	Bolt, Hexagon	
4	29	FW25MSS	Washer, Flat	

A10336

NOTICE TO PERSONS RECEIVING THIS DRAWING

THE TECHNICAL MATERIEL CORPORATION claims proprietary right in the material disclosed hereon. This drawing is issued in confidence for engineering information only and may not be reproduced or used to manufacture anything shown hereon without permission from THE TECHNICAL MATERIEL CORPORATION to the user. This drawing is loaned for mutual assistance and is subject to recall at any time.

Property of:
THE TECHNICAL MATERIEL CORPORATION
 MAMARONECK, NEW YORK

TOLERANCES		SCALE:
ALL OTHERS	DEC. DIM. ± FRAC. DIM. ± ANGULAR DIM. ±	DRILL, PUNCH, COMMERCIAL STOCK SIZES AND MANUFACTURERS TOLERANCES ARE NOT INCLUDED.

VRA-SPECIAL		MAY, 11, 1962	
MODEL	PROJECT NO.	ASS'Y. NO.	DATE
USED ON			

STOCK SIZE		TMC (Canada) LIMITED OTTAWA ONTARIO	
MATERIAL		VRA (SPECIAL)	
TYPE & TEMPER		JPC	
HEAT TREAT. SPEC.		DRW. JPC	ELEC. DES. APP. [Signature]
FINISH & SPEC. NO.		CHECKED [Signature]	MECH. DES. APP. [Signature]
		FINAL APPROVAL	
		A10336	