

IF IT IS FOUND DESIRABLE TO CHANGE ANY TOLERANCE OR OTHER DETAIL SPECIFIED ON THIS DRAWING NOTIFY THE PURCHASER PROMPTLY.		DIMENSIONS IN INCHES UNLESS OTHERWISE SPECIFIED					
MAXIMUM ALLOWABLE TOLERANCES HAVE BEEN DETERMINED AND DEVIATIONS WILL BE CAUSE FOR REJECTION. REMOVE ALL BURRS AND SHARP EDGES.							
ISSUE	ITEM	CHANGED FROM	DATE	CN. NO.	DRAFTS	CHECKER	ENG. APP.
A		REDRAWN	AUG 23/61	1	JPC	Jle.	RWJ
B		PICTORIAL CLARIFICATION	DEC 20/61	2	JPC	Jle.	Woe
C		IT. 12 WAS SCB50632BN4 IT. 16 ADD. TO B/M & PICT.	8.20.64	12158	WJB	@	MMK
D		CHART REVISED	3.15.72	21011	GE	EJ	EJ

NOTICE TO PERSONS RECEIVING THIS DRAWING

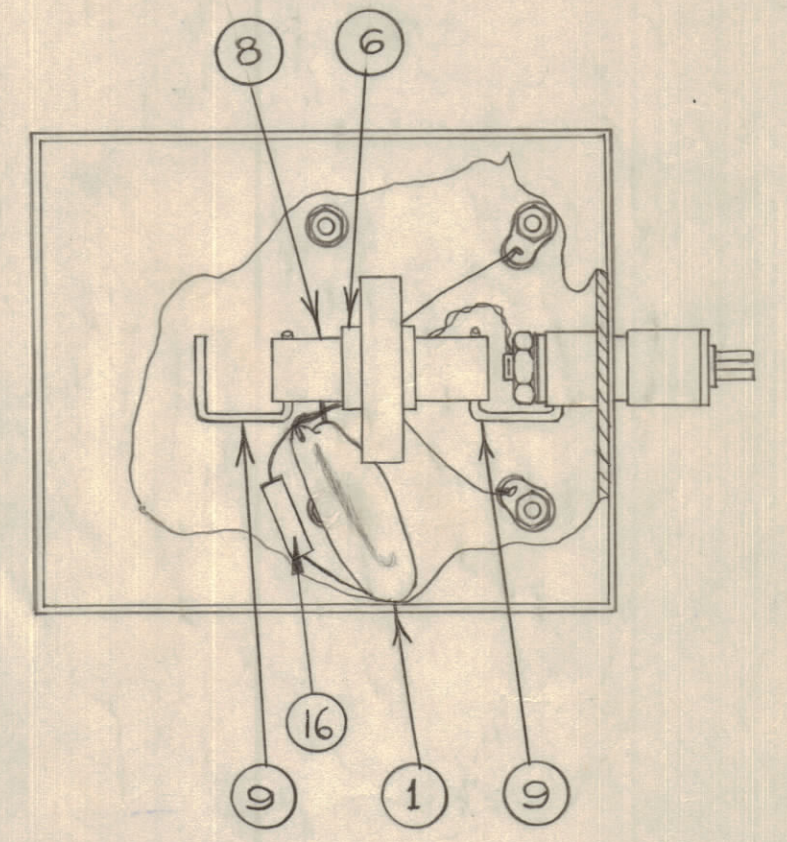
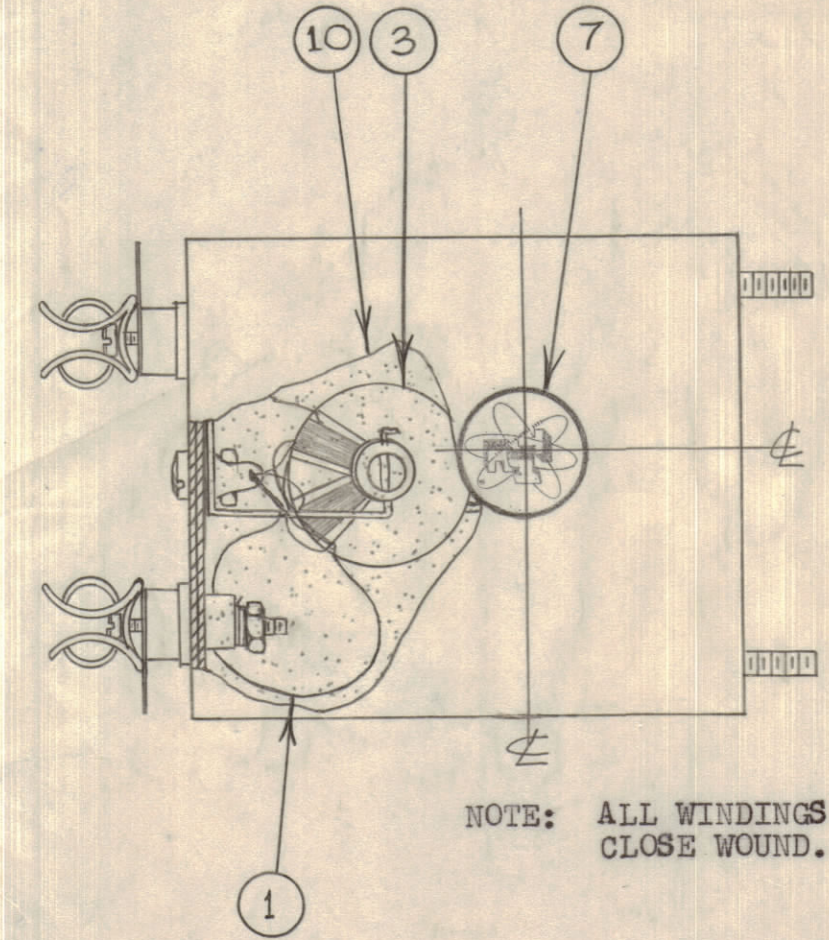
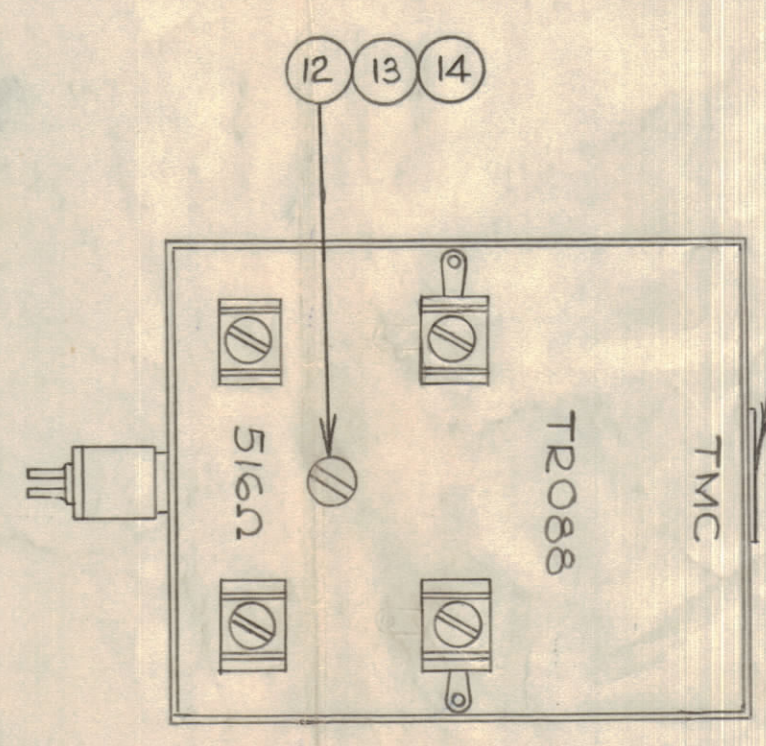
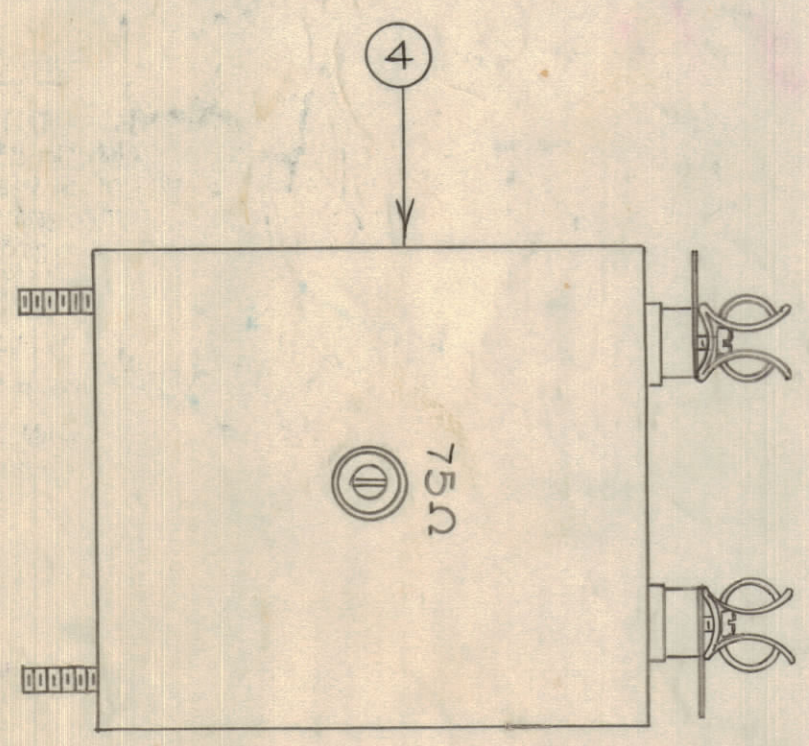
THE TECHNICAL MATERIEL CORPORATION claims proprietary right in the material disclosed herein. This drawing is issued in confidence for engineering information only and may not be reproduced or used to manufacture anything shown herein without permission from THE TECHNICAL MATERIEL CORPORATION to the user. This drawing is loaned for mutual assistance and is subject to recall at any time.

Property of:
THE TECHNICAL MATERIEL CORPORATION
MAMARONECK, NEW YORK

NOT TO BE RELEASED W/O AUTHORIZATION

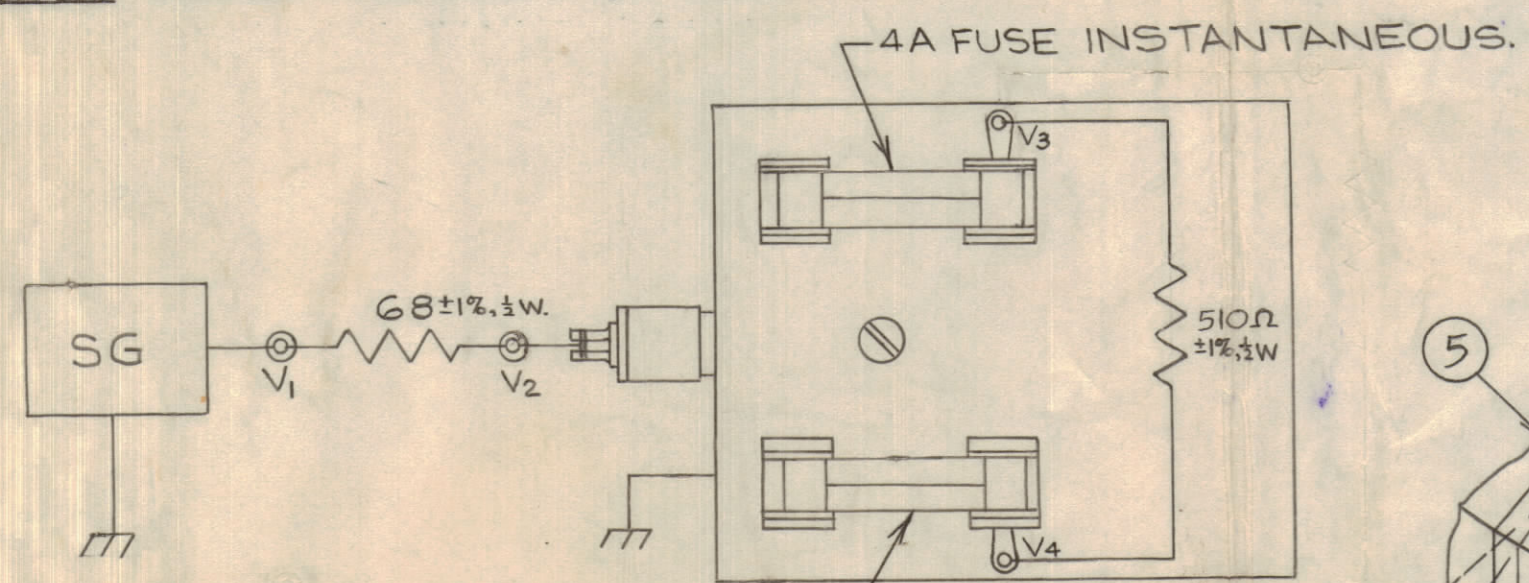
AUTH. BY _____
DATE: _____

REQ.	ITEM	PART NO.	DESCRIPTION	SYMBOL
1	1	CC-10006-1	Capacitor, disc., 0.05 uf	
24	2	WI-10007	Wire: 30 g single poly, single nylon covered.	
1	3	CI-10001-3	Core: ferrite, 3 C material	
1	4	BX-197	Box: assembled	
3	5	TA-10002-1	Tape: mylar, yellow	
AR	6	TA-10001-1	Tape: masking 3/8"	
1	7	NP-228-.6875	Decal: adhesive, T.M.C. Insignia	
1	8	CF-10012	Coil form	
2	9	MS-10259	Stabilizer	
*	10	GL-120	Compound: potting, STYCAST 1090	
AR	11	GL-10001	Radio Cement	
1	12	SCBP0632BN4	Screw	
1	13	NTH0632BN4	Nut	
1	14	TE-104-2	Solder Lug	
AR	15	GL-10001	Radio Cement	
1	16	RC206F103K	RESISTOR, FIXED, COMPOSITION	



NOTE: STAMPING TO BE BLACK & 1/8" HIGH.

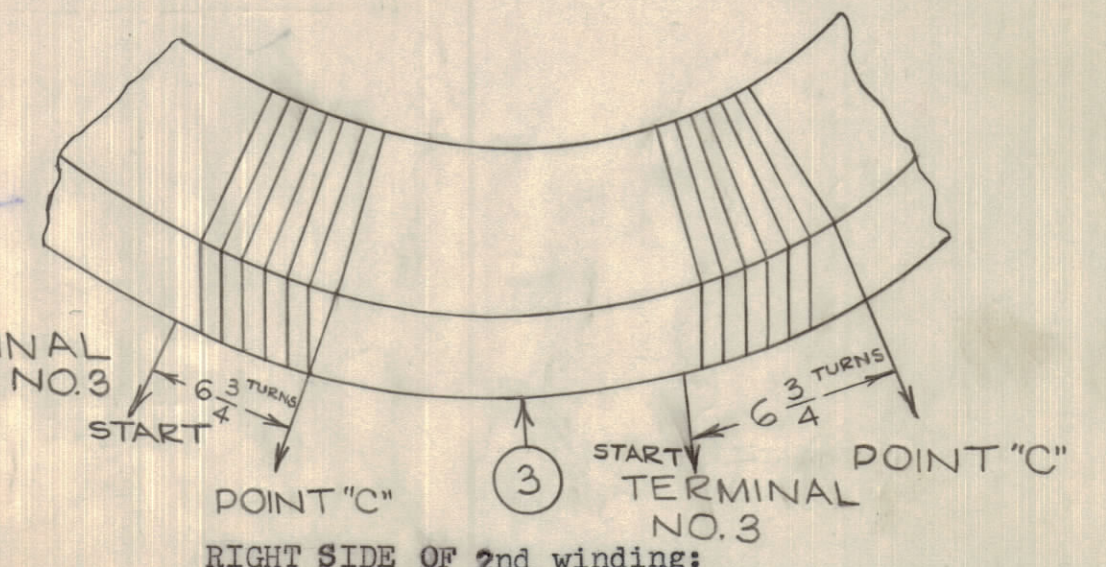
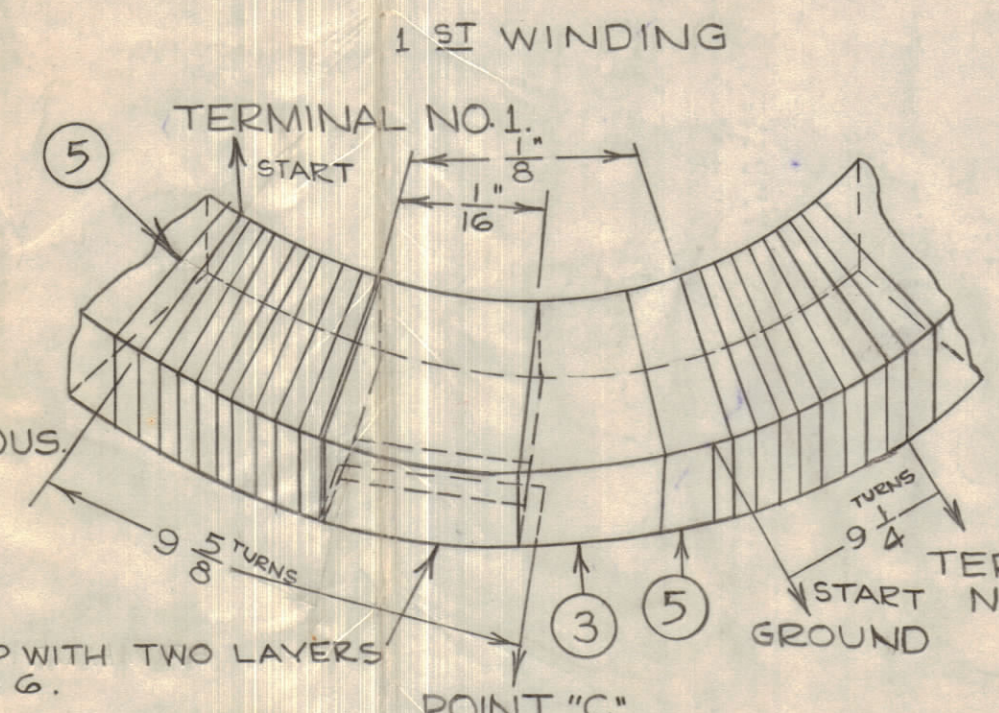
NOTE: ALL WINDINGS TO BE CLOSE WOUND.



ALL VOLTAGES MEASURED BETWEEN GROUND AND TEST POINTS.

F(MC/S)	V1 (V)	V2 (V)	V3 (V)	V4 (V)
2		.5 ± .02	.66 ± .01	.66 ± .01
8	1	.5 ± .02	.66 ± .02	.66 ± .02
6	1	.5 ± .02	.66 ± .03	.66 ± .03

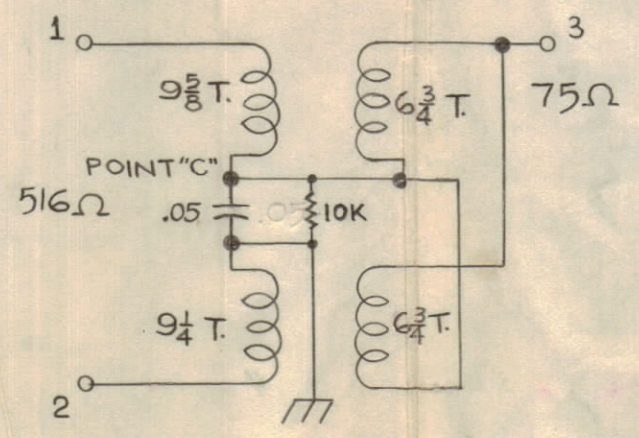
Measurements made with VIVM, Hewlet-Packard, Model 410B or equiv.



BUILD UP WITH TWO LAYERS OF ITEM 6.

LEFT SIDE OF 2nd. WINDING:
1st. turn of 2nd. winding to be over 5th. turn of 1st. winding.

RIGHT SIDE OF 2nd winding:
1st. turn of 2nd. winding to be over 1st. turn of 1st. winding.



WINDING NOTES:

1. Use one layer only of item 5 overlapping 1/16" Stretch tape to avoid wrinkles.
2. Coat the 1st. winding lightly with item 11.
3. Coat the 2nd. winding liberally with item 11.

* NOTE: WEIGHT OF RESIN ONLY - 165 gm.

TOLERANCES	SCALE:
DEC. DIM. ± FRAC. DIM. ± ANGULAR DIM. ±	DRILL, PUNCH, COMMERCIAL STOCK SIZES AND MANUFACTURERS TOLERANCES ARE NOT INCLUDED.

TRO88	E2570-4/5/6	AUG. 28/61
MODEL	PROJECT NO.	ASS'Y. NO.
USED ON		

STOCK SIZE		TMC (Canada) LIMITED OTTAWA ONTARIO	
MATERIAL		TRANSFORMER TRO88	
TYPE & TEMPER		JPC DRAWN	RWJ ELEC. DES. APP.
HEAT TREAT. SPEC.		MECH. DES. APP.	
FINISH & SPEC. NO.		CHECKED	FINAL APPROVAL
		AIO328	