

TOP SECRET

IF IT IS FOUND DESIRABLE TO CHANGE ANY TOLERANCE OR OTHER DETAIL SPECIFIED ON THIS DRAWING NOTIFY THE PURCHASER PROMPTLY.		DIMENSIONS IN INCHES UNLESS OTHERWISE SPECIFIED					
MAXIMUM ALLOWABLE TOLERANCES HAVE BEEN DETERMINED AND DEVIATIONS WILL BE CAUSE FOR REJECTION. REMOVE ALL BURRS AND SHARP EDGES.							
ISSUE	ITEM	CHANGED FROM	DATE	CN. NO.	DRAFTS	CHECKER	ENG. APP.
A		TEST DATA REVISED WINDING NOTES ADDED	July 5 1961		JPC		R.W.J.
B		DWG REPLACED	11/14/61	10392			

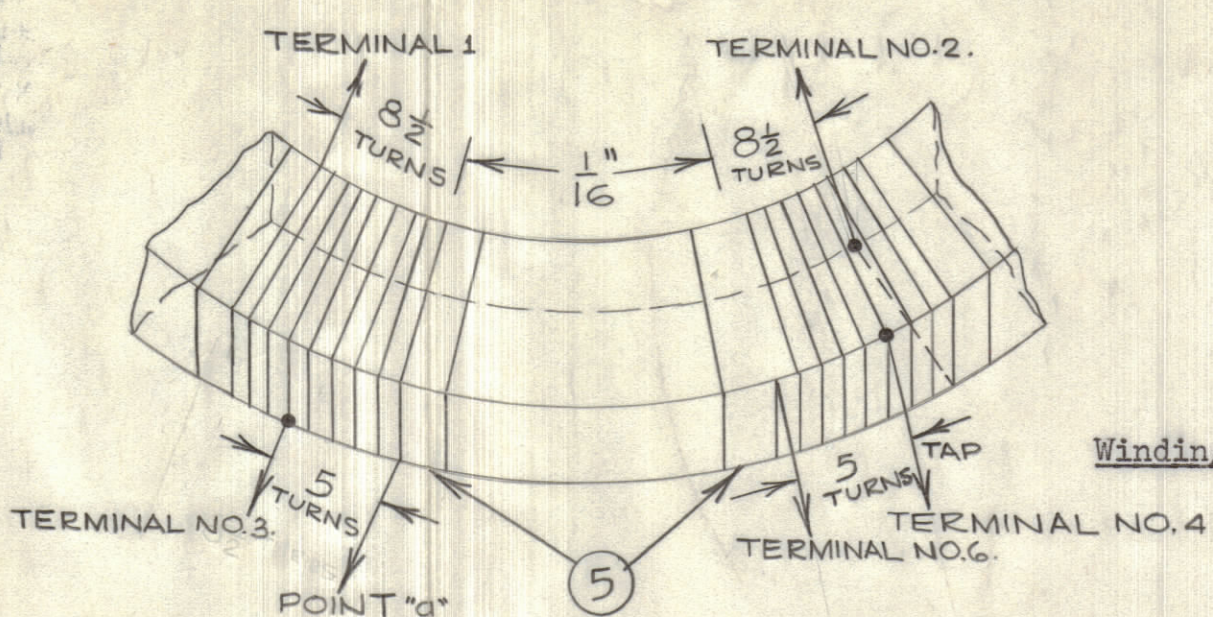
NOTICE TO PERSONS RECEIVING THIS DRAWING

THE TECHNICAL MATERIEL CORPORATION claims proprietary right in the material disclosed herein. This drawing is issued in confidence for engineering information only and may not be reproduced or used to manufacture anything shown hereon without permission from THE TECHNICAL MATERIEL CORPORATION to the user. This drawing is loaned for mutual assistance and is subject to recall at any time.

Property of:
THE TECHNICAL MATERIEL CORPORATION
MAMARONECK, NEW YORK

REQ.	ITEM	PART NO.	DESCRIPTION	SYMBOL
1	1	BX-107	Case	
AR	2	BS-100	Solder	
AR	3	GL-10003	Laminac: cold potting	
AR	4	TA-10001	Tape: masking	
AR	5	TA-10002-1-Y	Tape: mylar, yellow	
1	6	CF-10012	Former	
1	7	CI-10001-3	Core	
2	8	MS-10259	Stabilizer	
1	9	RC32GF103K	Resistor: 10K, 1 watt	
1	10	CC-10006-1	Capacitor: .05 uf	
AR	11	WI-10007	Wire: # 30, single nylon, single polyester	
1	12	NP-228-.6875	Insignia: T.M.C., circular	
AR	13	GL-10001	Radio Cement	

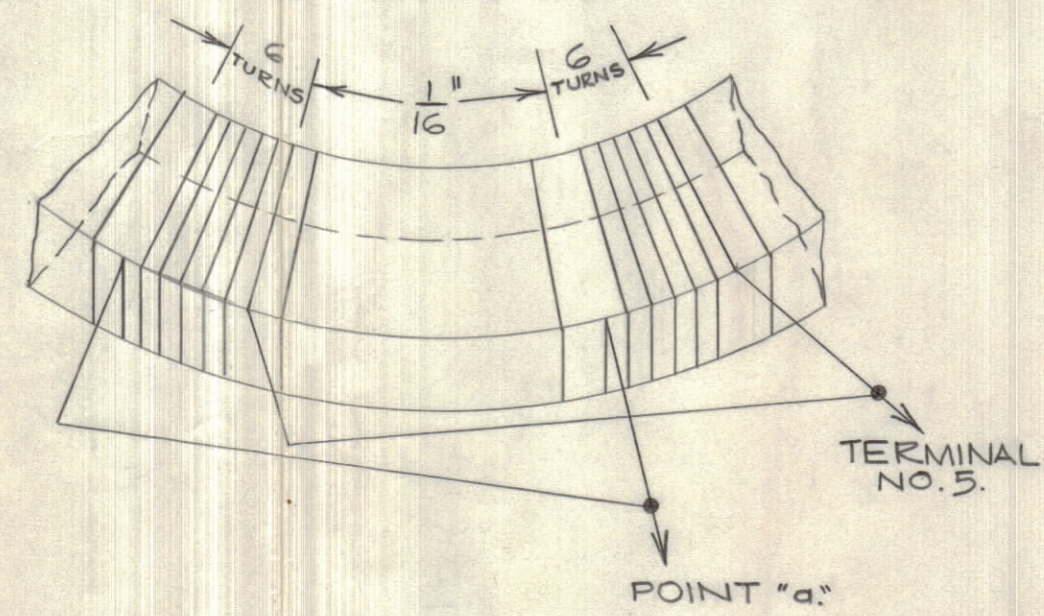
1ST WINDING



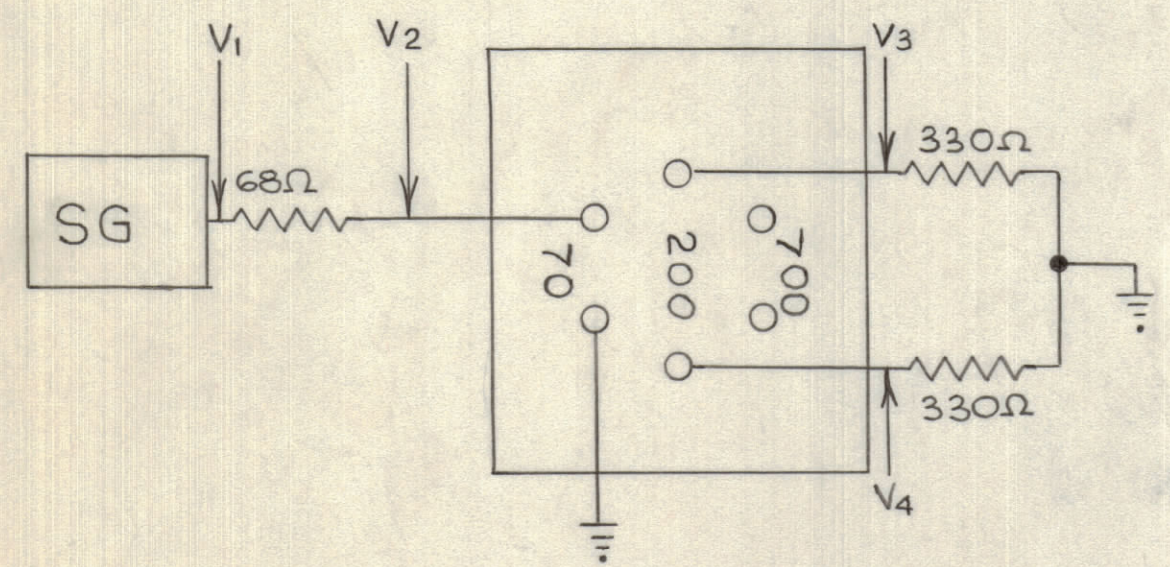
Winding Notes:

- Use one layer only of item 5 overlapping $\frac{1}{16}$ "
- Stretch tape to avoid wrinkles.
- Coat the 1st winding lightly with item 13.
- Coat the 2nd winding liberally with item 13.

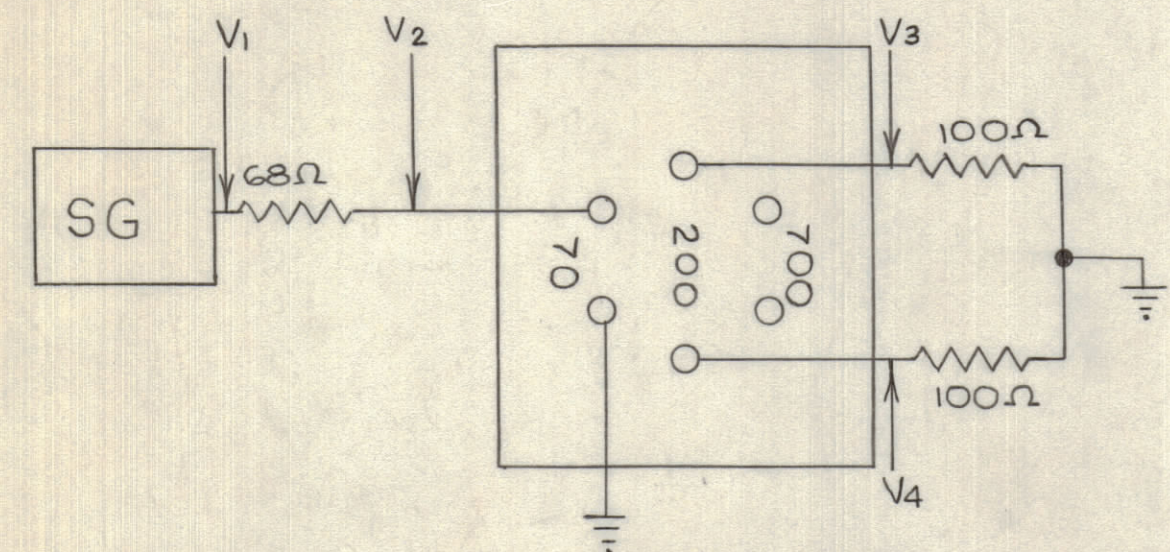
2ND WINDING



TEST ARRANGEMENT FOR 700Ω SIDE.

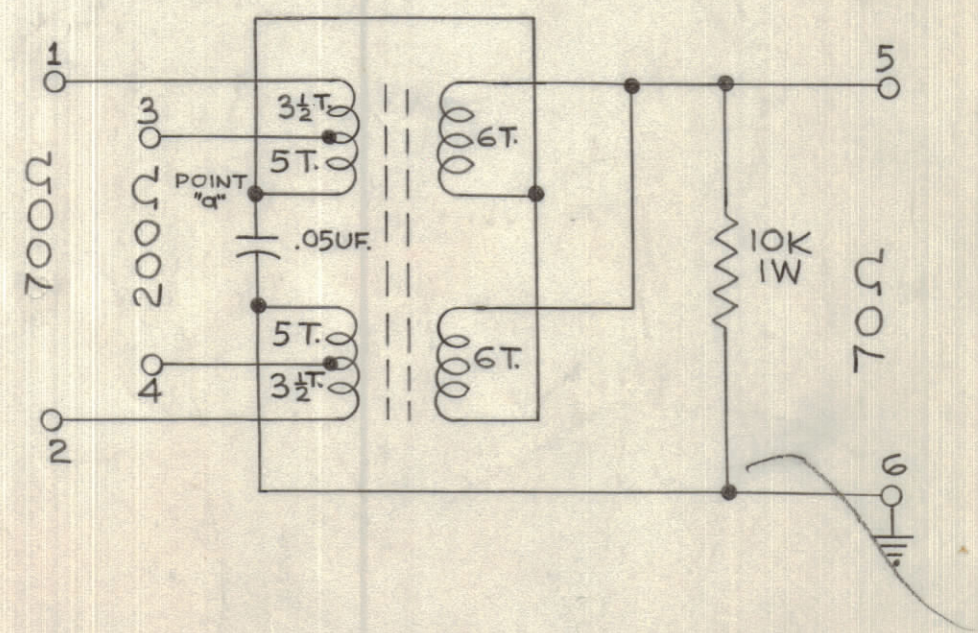
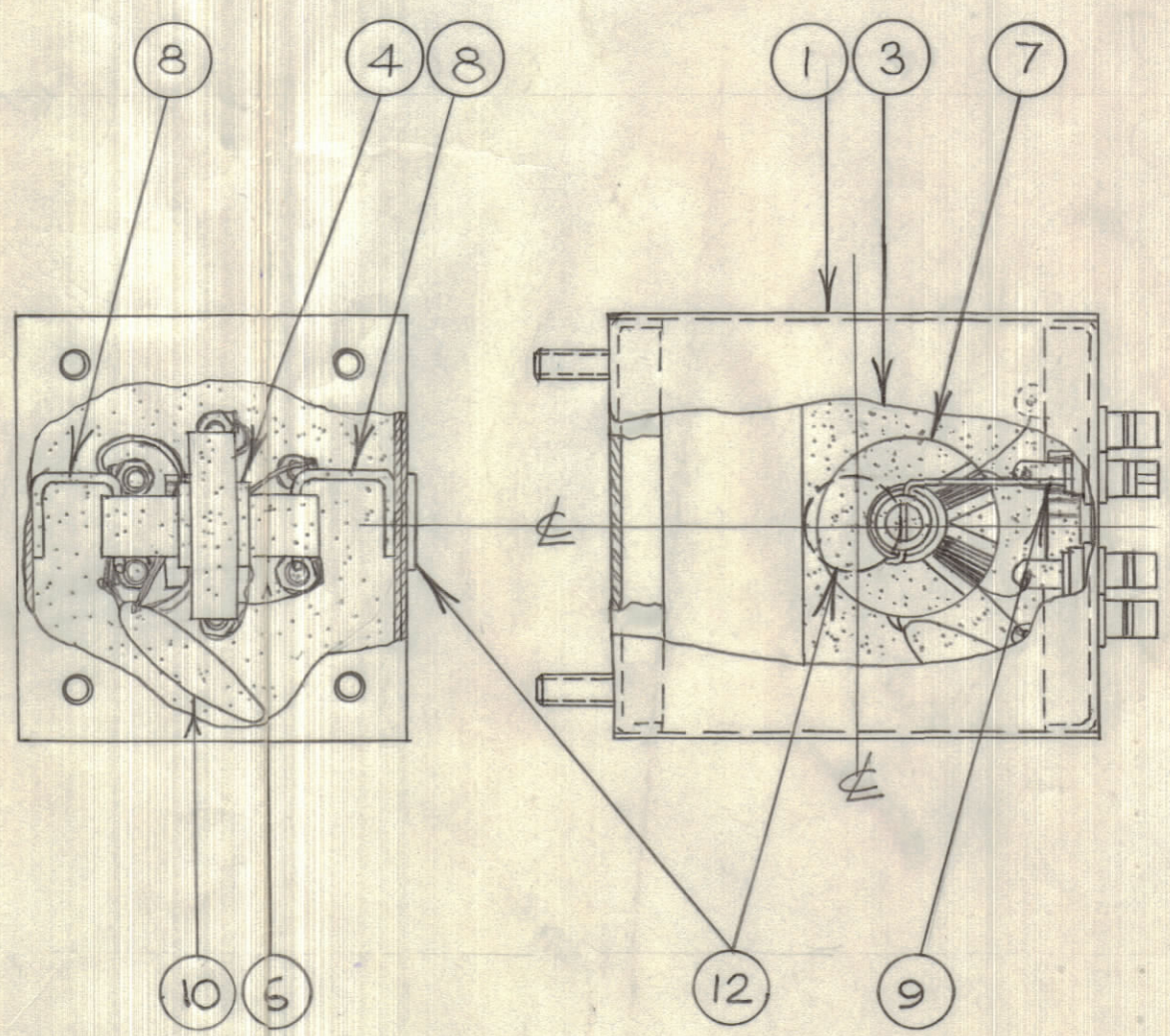


TEST SIGNAL UNMODULATED

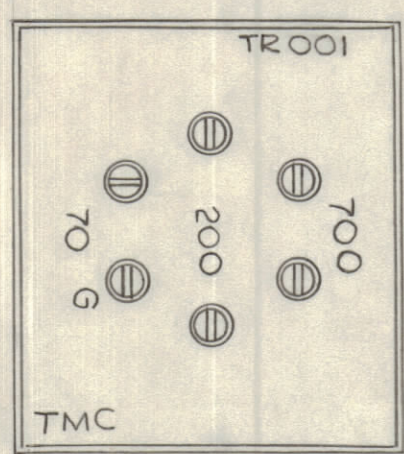


TEST ARRANGEMENT FOR 200Ω SIDE

TEST DATA TR-001		
Test frequencies in mc/s: 2, 8, 30		
	200 ohm side	700 ohm side
Set Level	$V_1 = 1.000V$	$V_1 = 1.000V$
VSWR = 1.2 max.	$0.52 > V_2 > 0.46$	$0.52 > V_2 > 0.44$
Insertion Loss ± 1 db max.	$0.42 > V_3 > 0.37$ $0.42 > V_4 > 0.37$	$0.74 > V_3 > 0.69$ $0.74 > V_4 > 0.69$
Response ± 0.5 db max.	$1.059 > \frac{V_3 \text{ max.}}{V_3 \text{ min.}} > 1.000$ $1.059 > \frac{V_4 \text{ max.}}{V_4 \text{ min.}} > 1.000$	$1.059 > \frac{V_3 \text{ max.}}{V_3 \text{ min.}} > 1.000$ $1.059 > \frac{V_4 \text{ max.}}{V_4 \text{ min.}} > 1.000$



A10327 B



SUPERSEDED
DIRECTLY REPLACED BY A-142

NOT TO BE RELEASED
W/O AUTHORIZATION
AUTH. BY _____
DATE: _____

STOCK SIZE		T.M.C. (Canada) LIMITED OTTAWA ONTARIO	
MATERIAL		R.F. TRANSFORMER	
TYPE & TEMPER		TMOO1	
HEAT TREAT. SPEC.		JPC DRAWN	R.W.J. ELEC. DES. APP.
FINISH & SPEC. NO.		Checked	MECH. DES. APP.
		FINAL APPROVAL	
		A10327 B	

TMOO1	E 2570	JUNE 22/61
MODEL	PROJECT NO.	DATE