

IF IT IS FOUND DESIRABLE TO CHANGE ANY TOLERANCE OR OTHER DETAIL SPECIFIED ON THIS DRAWING NOTIFY THE PURCHASER PROMPTLY.

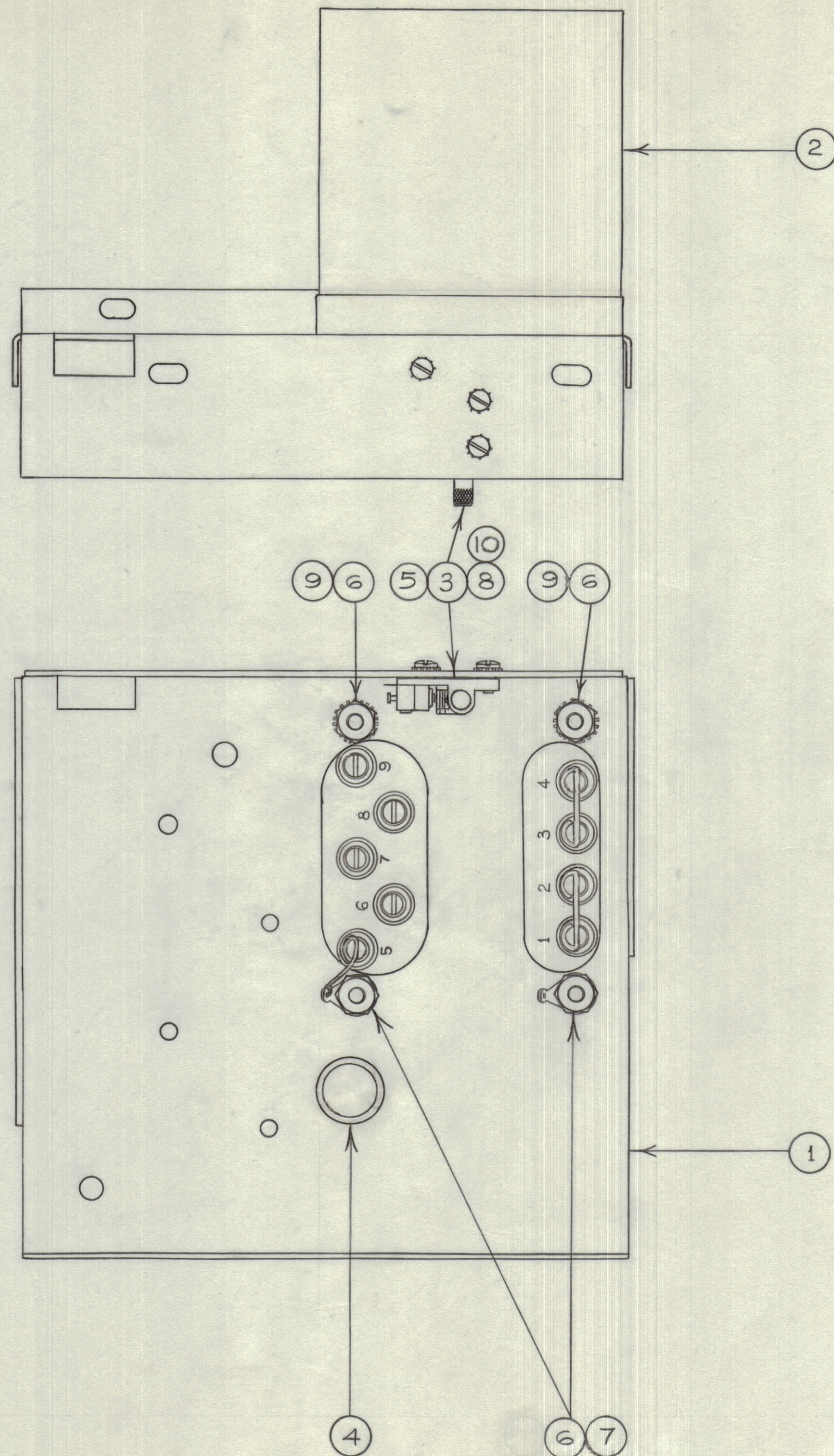
MAXIMUM ALLOWABLE TOLERANCES HAVE BEEN DETERMINED AND DEVIATIONS WILL BE CAUSE FOR REJECTION. REMOVE ALL BURRS AND SHARP EDGES

**NOTICE TO PERSONS RECEIVING THIS DRAWING**

THE TECHNICAL MATERIEL CORPORATION claims proprietary right in the material disclosed hereon. This drawing is issued in confidence for engineering information only and may not be reproduced or used to manufacture anything shown hereon without permission from THE TECHNICAL MATERIEL CORPORATION to the user. This drawing is loaned for mutual assistance and is subject to recall at any time.

Property of:

THE TECHNICAL MATERIEL CORPORATION  
MAMARONECK, NEW YORK



A10310

REQ.	ITEM	PART NO.	DESCRIPTION	SYMBOL
3	10	WAI09-17	WASHER, FIBER	
2	9	LWEO8MRN	LOCKWASHER	
3	8	LWEO4MRN	LOCKWASHER	
2	7	TE 104-3	GROUND LUG	
4	6	NTH0832BNII	NUT, HEXAGON	
3	5	SCBS0440BN5	SCREW	
1	4	EY 102-15	GROMMET	
1	3	SW 219	SWITCH, MICRO	
1	2	TF 180	TRANSFORMER, POWER	
1	1	LDI0093	CHASSIS	

STOCK SIZE		TMC (Canada) LIMITED	
MATERIAL		OTTAWA ONTARIO	
TYPE & TEMPER		FIL. TRANS. CHASSIS ASSEMBLY	
HEAT TREAT. SPEC.		JPC	
FINISH & SPEC. NO.		DRAWN	
		ELEC. DES. APP.	
		MECH. DES. APP.	
		CHECKED	
		FINAL APPROVAL	
		A10310	

ISSUE	ITEM	CHANGED FROM	DATE	CN. NO.	DRAFTS	CHECKER	ENG. APP.
TOLERANCES							
ALL OTHERS				SCALE: 1:1			
DEC. DIM. ±				DRILL, PUNCH, COMMERCIAL STOCK			
FRAC. DIM. ±				SIZES AND MANUFACTURERS			
ANGULAR DIM. ±				TOLERANCES ARE NOT INCLUDED.			

RFA-1			3/2/61
MODEL	PROJECT NO.	ASS'Y. NO.	DATE
USED ON			