

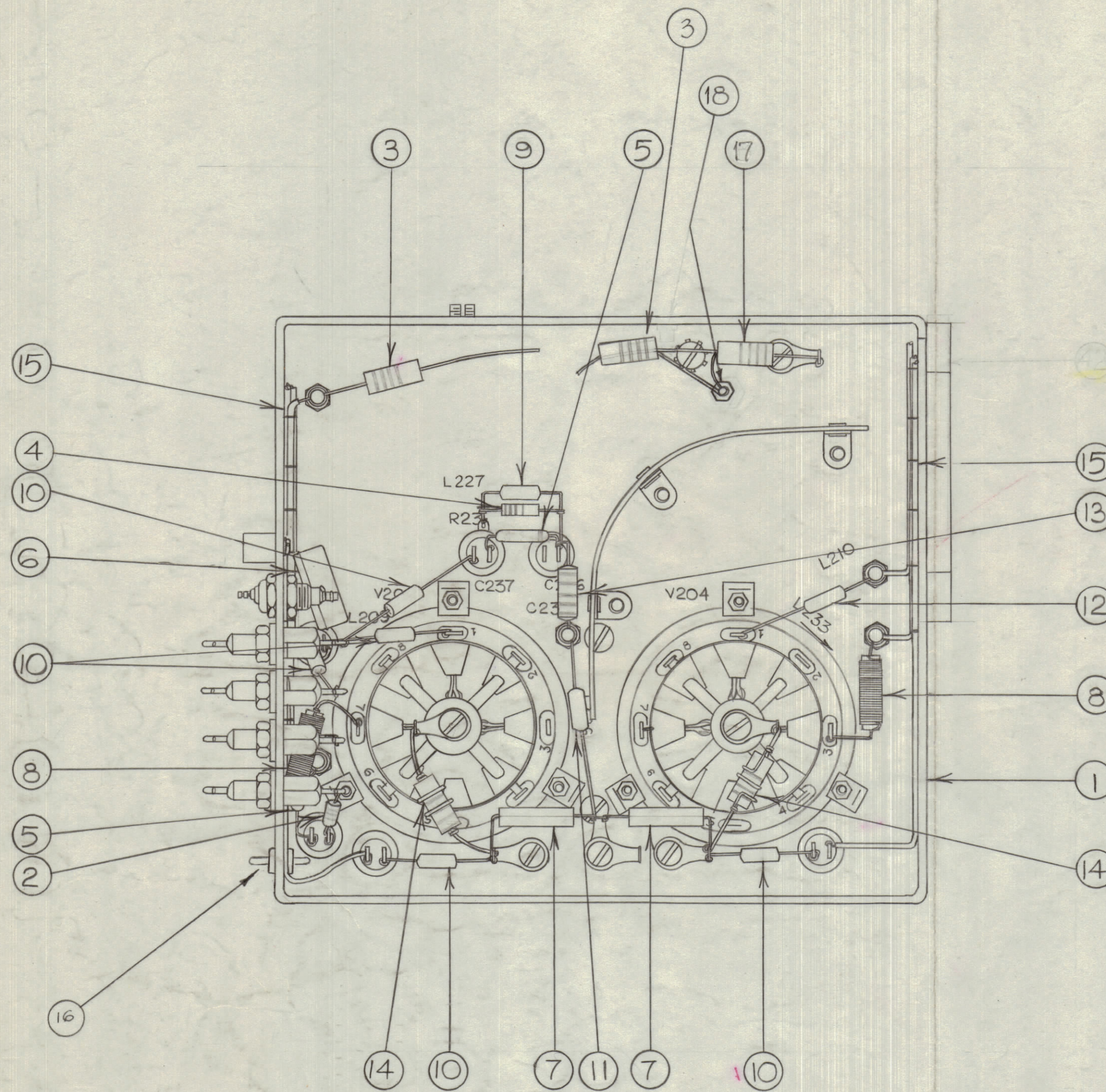
IF IT IS FOUND DESIRABLE TO CHANGE ANY TOLERANCE OR OTHER DETAIL SPECIFIED ON THIS DRAWING NOTIFY THE PURCHASER PROMPTLY.

MAXIMUM ALLOWABLE TOLERANCES HAVE BEEN DETERMINED AND DEVIATIONS WILL BE CAUSE FOR REJECTION. REMOVE ALL BURRS AND SHARP EDGES

NOTICE TO PERSONS RECEIVING THIS DRAWING

THE TECHNICAL MATERIEL CORPORATION claims proprietary right in the material disclosed hereon. This drawing is issued in confidence for engineering information only and may not be reproduced or used to manufacture anything shown hereon without permission from THE TECHNICAL MATERIEL CORPORATION to the user. This drawing is loaned for mutual assistance and is subject to recall at any time.

Property of:
THE TECHNICAL MATERIEL CORPORATION
MAMARONECK, NEW YORK



A10303 D

1	18	TE 102-2	TERM, STUD, INS.	
1	17	RC32GF473J	RES, FXD, COMP.	
1	16	TE 114-2	TERM, FEED THRU.	
1	15	CA-10137	Cable Assembly	
2	14	A-1546-1	Suppressor, parasitic	
1	13	CG21S1030C	Capacitor, fixed	
1	12	CL-10006-2	Inductor	
1	11	CL-10006-3	Inductor	
5	10	CL-10006-6	Inductor	
1	9	CL-10006-7	Inductor	
2	8	CL-10023-1	Inductor	
2	7	CM20E102J	Capacitor, mica	
1	6	CM35C103J	Capacitor, mica	
2	5	1N-675A	Diode	
1	4	RC20GF222K	Resistor, Fixed	
2	3	RC30GF223K	Resistor, Fixed	
1	2	RC30GF823K	Resistor, Fixed	
1	1	A-10303Sh.1	R.F. Section Mechanical Assembly	
REQ. ITEM	PART NO.	DESCRIPTION		SYMBOL
TMC (Canada) LIMITED OTTAWA ONTARIO				
STOCK SIZE				
GENERAL ASS'Y.				
MATERIAL WEIGHT PER PC. RF SECTION				
TYPE & TEMPER				
DRAWN ELEC. DES. APP MECH. DES. APP.				
HEAT TREAT. SPEC.				
CHECKED FINAL APPROVAL				
FINISH & SPEC. NO.				

D	IT IT WAS RC32GF104K	6.1.66	6318	WHD	JCB	JCB	
C	18 WAS 8. IT 18 RELOC.	11/5/63	15200	P.V.	JCB	JCB	
B	ADD. ITS. 16, 17, 18. ITS WAS IN 478	7/6/63	14396	P.V.	JCB	JCB	
A	2 ADDED # 42	2-4-64	10816	A.M	TR	JCB	
ISSUE	ITEM	CHANGED FROM	DATE	CN. NO.	DRAFTS	CHECKER	ENG. APP.
TOLERANCES							
SCALE: 1:1							
DRILL, PUNCH, COMMERCIAL STOCK SIZES AND MANUFACTURERS TOLERANCES ARE NOT INCLUDED.							
ALL OTHERS DEC. DIM. ± FRAC. DIM. ± ANGULAR DIM. ±							

RFA-1			3/27/61
MODEL	PROJECT NO.	ASS'Y. NO.	DATE
USED ON			