

IF IT IS FOUND DESIRABLE TO CHANGE ANY TOLERANCE OR OTHER DETAIL SPECIFIED ON THIS DRAWING NOTIFY THE PURCHASER PROMPTLY.

MAXIMUM ALLOWABLE TOLERANCES HAVE BEEN DETERMINED AND DEVIATIONS WILL BE CAUSE FOR REJECTION. REMOVE ALL BURRS AND SHARP EDGES

A10295 A

USED ON

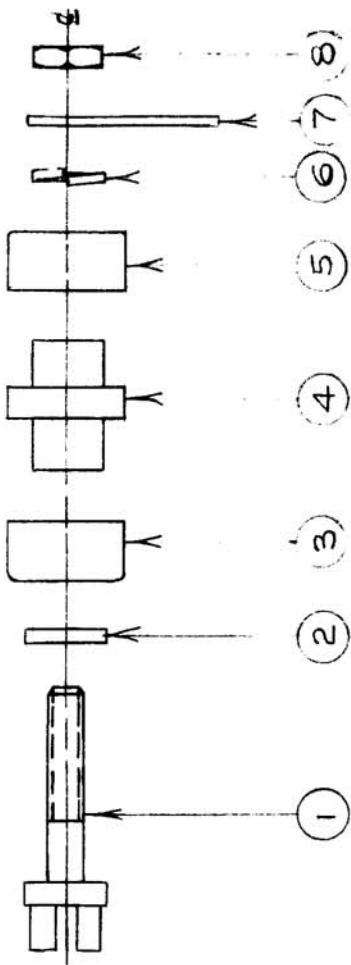
DATE

11/14/60

ASS'Y. NO.

PROJECT NO.

MODEL



REQ. ITEM	PART NO.	DESCRIPTION	SYMBOL
1	8	NTH0440BNG	NUT
1	7	TE113-.120	SOLDER LUG
1	6	LWS04MRR	WASHER SPLIT (OR MRN)
1	5		CUP, UPPER
1	4		SEAL NEOPRENE
1	3		CUP, LOWER
1	2		WASHER NEOPRENE.
1	1		STUD

TMC(Canada) LIMITED
OTTAWA ONTARIO

ASS'Y OF TE101-1&2

MATERIAL	WEIGHT PER PC
TYPE & TEMPER	
HEAT TREAT. SPEC.	
FINISH & SPEC. NO.	

DELETED	JAN. 5 1961	JPC
PT. NO. FROM 1 TO 5	DATE	CN. NO. DRAFTS CHECKER ENG. APP.
TE101-1&2 WAS TE101-2	CHANGED FROM	SCALE 2:1
ISSUE ITEM	TOLERANCES	DIMENSIONS IN INCHES UNLESS OTHERWISE SPECIFIED
ALL OTHERS	DEC. DIM. ±	FRAC. DIM. ±
	ANGULAR DIM. ±	SIZES AND MANUFACTURERS TOLERANCES ARE NOT INCLUDED.

JPC

DRAWN

ELEC. DES. APP.

MECH. DES. APP.

CHECKED

FINAL APPROVAL

A10295

A