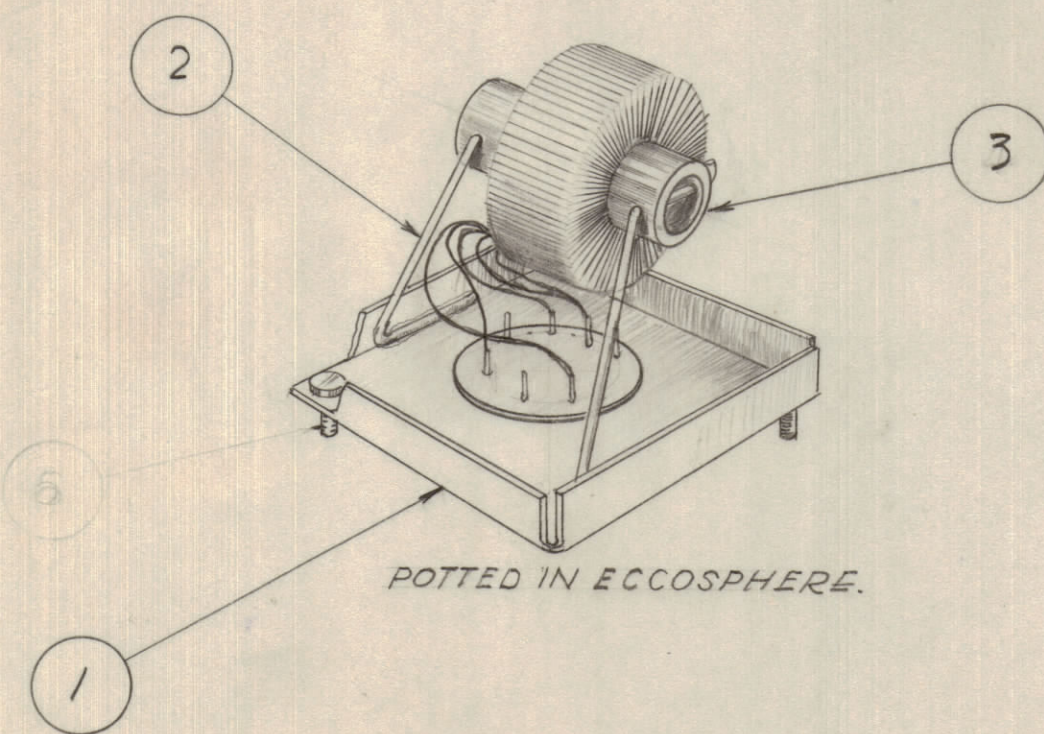
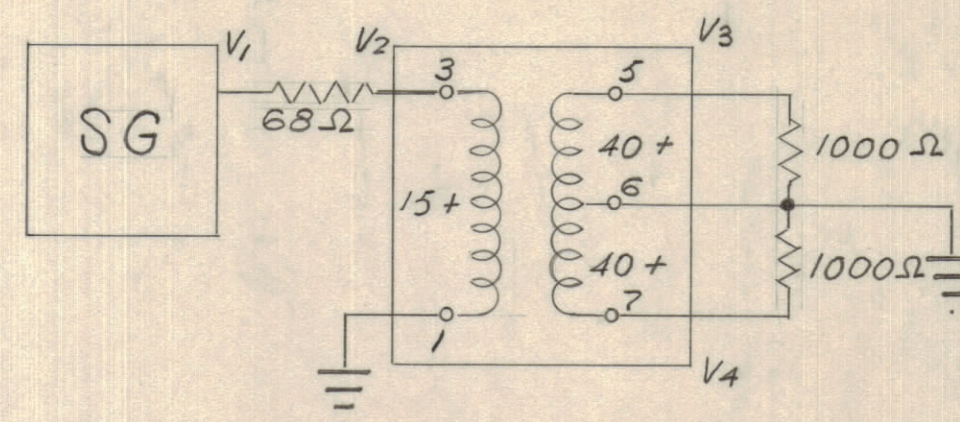
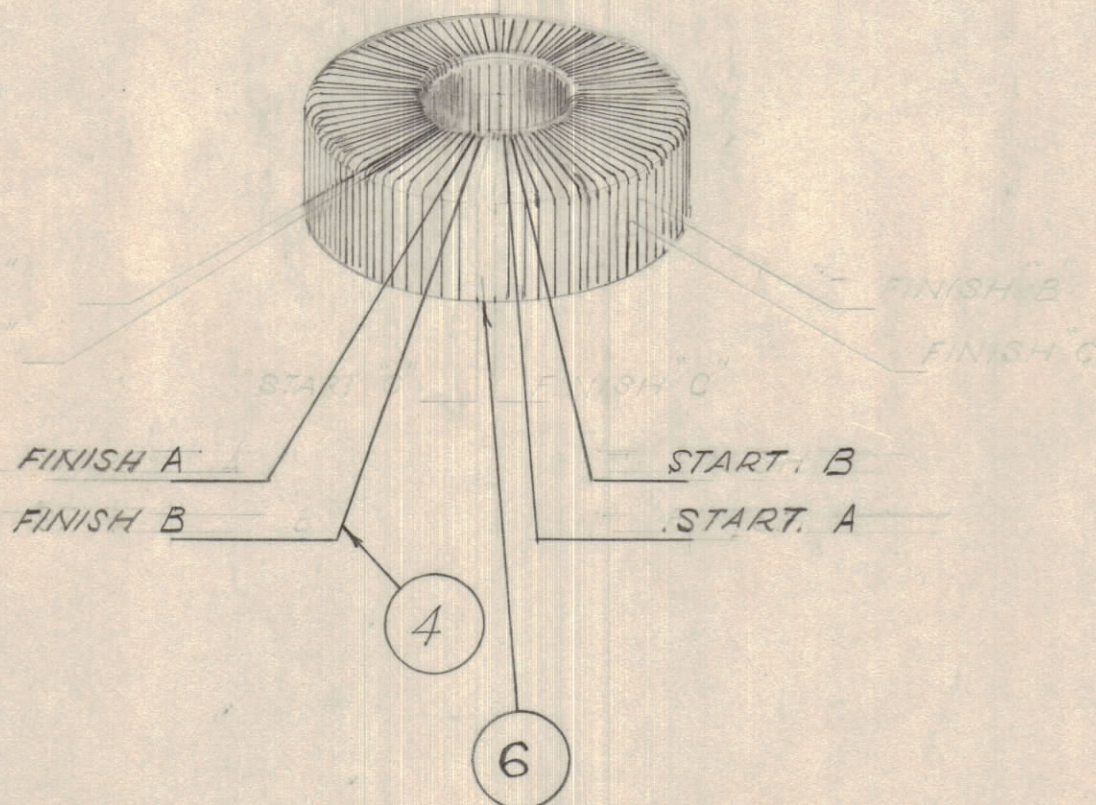
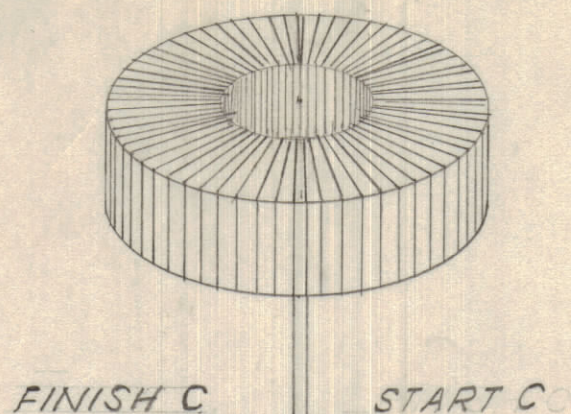
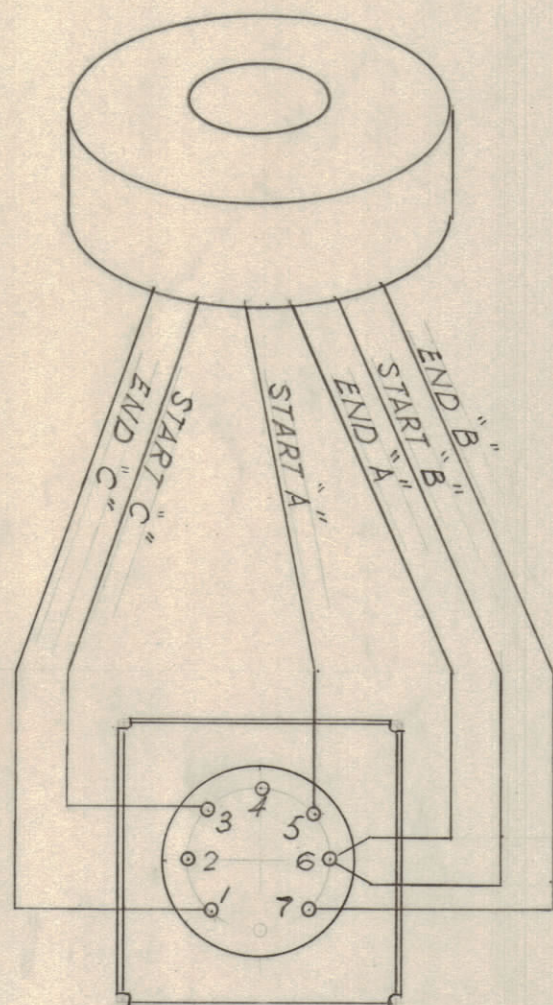


IF IT IS FOUND DESIRABLE TO CHANGE ANY TOLERANCE OR OTHER DETAIL SPECIFIED ON THIS DRAWING NOTIFY THE PURCHASER PROMPTLY.

MAXIMUM ALLOWABLE TOLERANCES HAVE BEEN DETERMINED AND DEVIATIONS WILL BE CAUSE FOR REJECTION. REMOVE ALL BURRS AND SHARP EDGES



TEST DATA

FREQ MODS	V ₁	V ₂	V ₃	V ₄	MAX. DIF V ₃ V ₄
.1	.6	.30 ± .02	.78 ± .03	.78 ± .06	.04
1.0	.6	.30 ± .02	.78 ± .02	.78 ± .02	.01
2.0	.6	.30 ± .04	.78 ± .05	.78 ± .05	.01

MEASURED WITH VTVM MOD 410B. HEWLETT-PACKARD.

STEP N°1

BIFILAR WINDING (2 WIRES SIDE BY SIDE) 2x34 TURNS # 30 DCC DISTRIBUTED OVER THE WHOLE CORE, CONTINUE WITH SAME TWO WIRES WINDING 2x6 TURNS EVENLY DISTRIBUTED OVER WHOLE CORE & SECURE WITH RADIO CEMENT.

STEP N°2.

WIND 1x15 TURNS # 30 DCC WIRE EVENLY DISTRIBUTED OVER CORE, COAT WINDING WITH RADIO CEMENT.

NOTICE TO PERSONS RECEIVING THIS DRAWING

THE TECHNICAL MATERIEL CORPORATION claims proprietary right in the material disclosed hereon. This drawing is issued in confidence for engineering information only and may not be reproduced or used to manufacture anything shown hereon without permission from THE TECHNICAL MATERIEL CORPORATION to the user. This drawing is loaned for mutual assistance and is subject to recall at any time.

Property of:
THE TECHNICAL MATERIEL CORPORATION
MAMARONECK, NEW YORK

NOT TO BE RELEASED
W/O AUTHORIZATION
AUTH. BY _____
DATE: _____

REQ.	ITEM	PART NO.	DESCRIPTION	SYMBOL
1	8	BX-100-35	CAN, BODY, LID	
			BASE MOUNTING	
1	7	TS-10004	HEADER; MULTI-TERMINAL	
1	6	CI-10007	CORE, MN-31	
1	3	CF-10012	COIL FORM	
3	7	MS-10259	STAB LINES	
2	6	SC-10001	STUD, 6-32 x 3/8	
A/R	4	WI-10007	WIRE # 30 DCC BRIDGEPORT INSULATED WIRE CO.	
3		CF-10012	COIL FORM	
2		MS-10259	STABILIZER	
1		MS-10258	BASE, MOUNTING	

ISSUE	ITEM	CHANGED FROM	DATE	CN. NO.	DRAFTS	CHECKER	ENG. APP.
A	1	WINDING INSTRUCTIONS REVISED WINDING VIEW ADDED POTTING INSTRUCTIONS ADDED BALLOONS ADDED BOM REVISED	27 OCT 1960			WHD	LKB WKA

TOLERANCES		SCALE:
ALL OTHERS	DEC. DIM. ± FRAC. DIM. ± ANGULAR DIM. ±	DRILL, PUNCH, COMMERCIAL STOCK SIZES AND MANUFACTURERS TOLERANCES ARE NOT INCLUDED.

DA-101	CE-5107	8 SEPT 1960
MODEL	PROJECT NO.	DATE
USED ON		

REQ.	ITEM	PART NO.	DESCRIPTION	SYMBOL
TMC (Canada) LIMITED OTTAWA ONTARIO				
ASSEMBLY TR-084				
DRAWN		MECH. DES. APP.		
CHECKED		FINAL APPROVAL		
A-10283 A				

A-10283 A