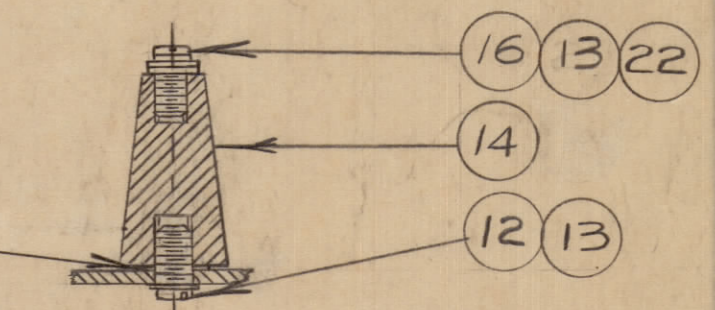
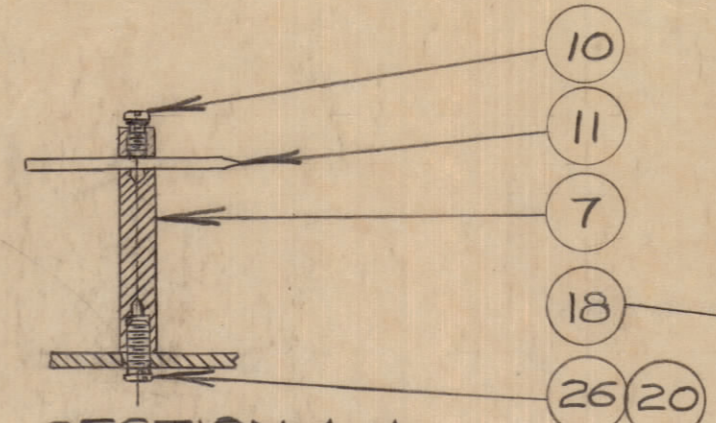
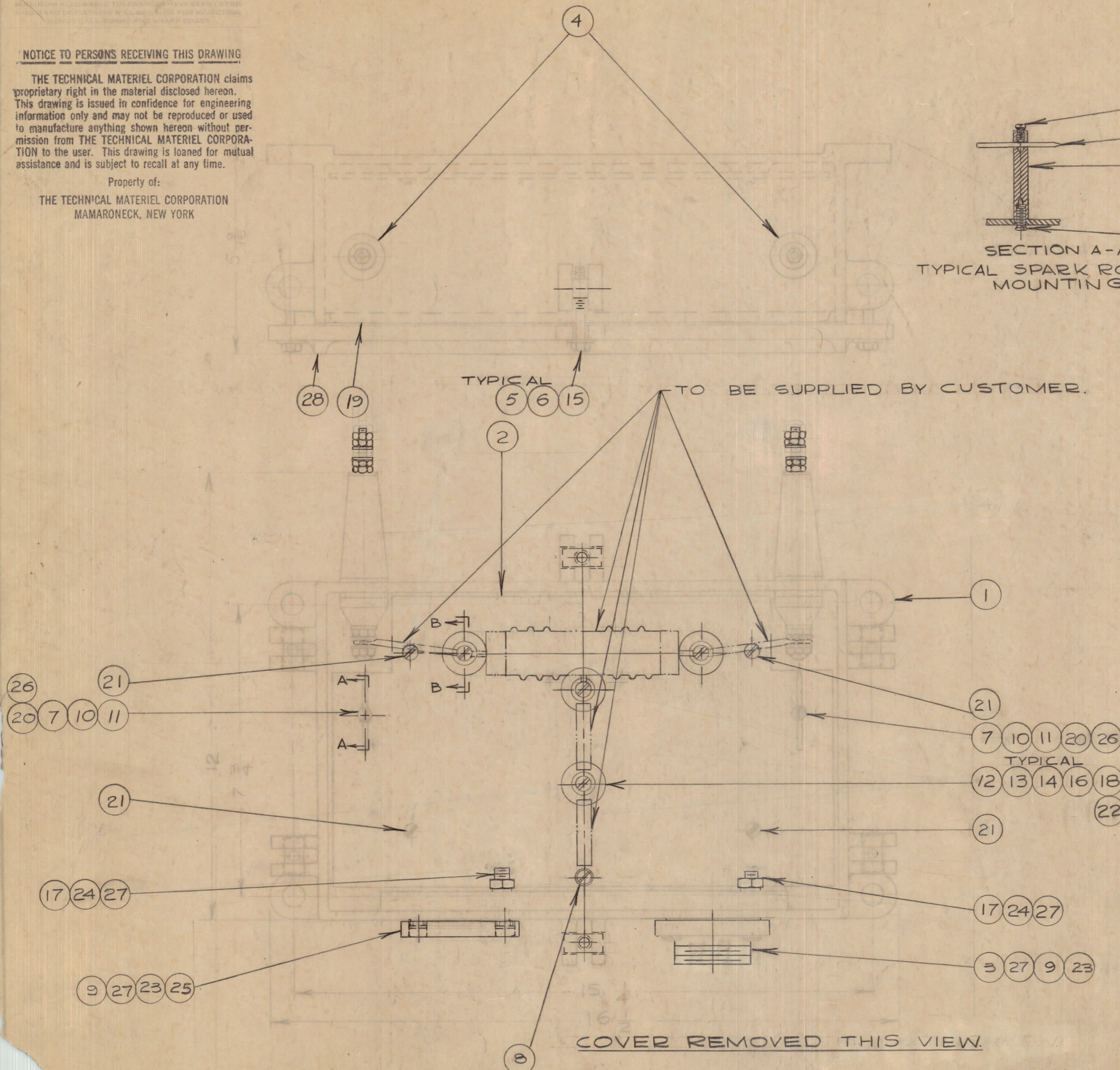


**NOTICE TO PERSONS RECEIVING THIS DRAWING**

THE TECHNICAL MATERIEL CORPORATION claims proprietary right in the material disclosed hereon. This drawing is issued in confidence for engineering information only and may not be reproduced or used to manufacture anything shown hereon without permission from THE TECHNICAL MATERIEL CORPORATION to the user. This drawing is loaned for mutual assistance and is subject to recall at any time.

Property of:  
THE TECHNICAL MATERIEL CORPORATION  
MAMARONECK, NEW YORK



1	28	PM114-B	COVER
10	27	LWS25MRN	LOCKWASHER
2	26	SCBS0632BN6	SCREW
1	25	PM10067	BLANKING PLATE
2	24	NT2520BN14	NUT
2	23	GA104	GASKET
8	22	FW1032LBN	WASHER
4	21	SCBS1032BN6	SCREW
2	20	LWS06MN	LOCKWASHER
1	19	GA107	GASKET
4	18	WA109-56	WASHER
2	17	SCI000224	SCREW
4	16	LW110MRN	LOCKWASHER
6	15	FW25M55	WASHER
4	14	NS10004	STAND-OFF POST
8	13	SCBS1032BN6	SCREW
4	12	LWE10MRN	LOCKWASHER
2	11	PM103-B	SPARK ROD
2	10	SCBS0632BN6	SCREW
6	9	SCI0002-10	SCREW
1	8	A10238	GROUND POST ASS'Y
2	7	PM10064	SPARK ROD HOLDER
6	6	SCI08-9	BOLT HEX. HD.
6	5	PM100-B	PIN, COVER BOLT
2	4	A102 B	INSULATOR ASS'Y
1	3	PM107-F	FLANGE
1	2	MS10378	PLATE
1	1	MS10376	CASE

TMC (Canada) LIMITED  
OTTAWA ONTARIO  
ASSY OF HLC-5

JPC  
DCM

A10242

CHANGED FROM	DATE	CHK NO.	DRAWN	CHECKED	ENG. APP.

TOLERANCES: SCALE 1:2  
DRILL PUNCH COMMERCIAL STOCK  
SIZES AND MANUFACTURERS  
TOLERANCES ARE NOT INCLUDED.

HLC-5 ST1078 NOV. 24/58