

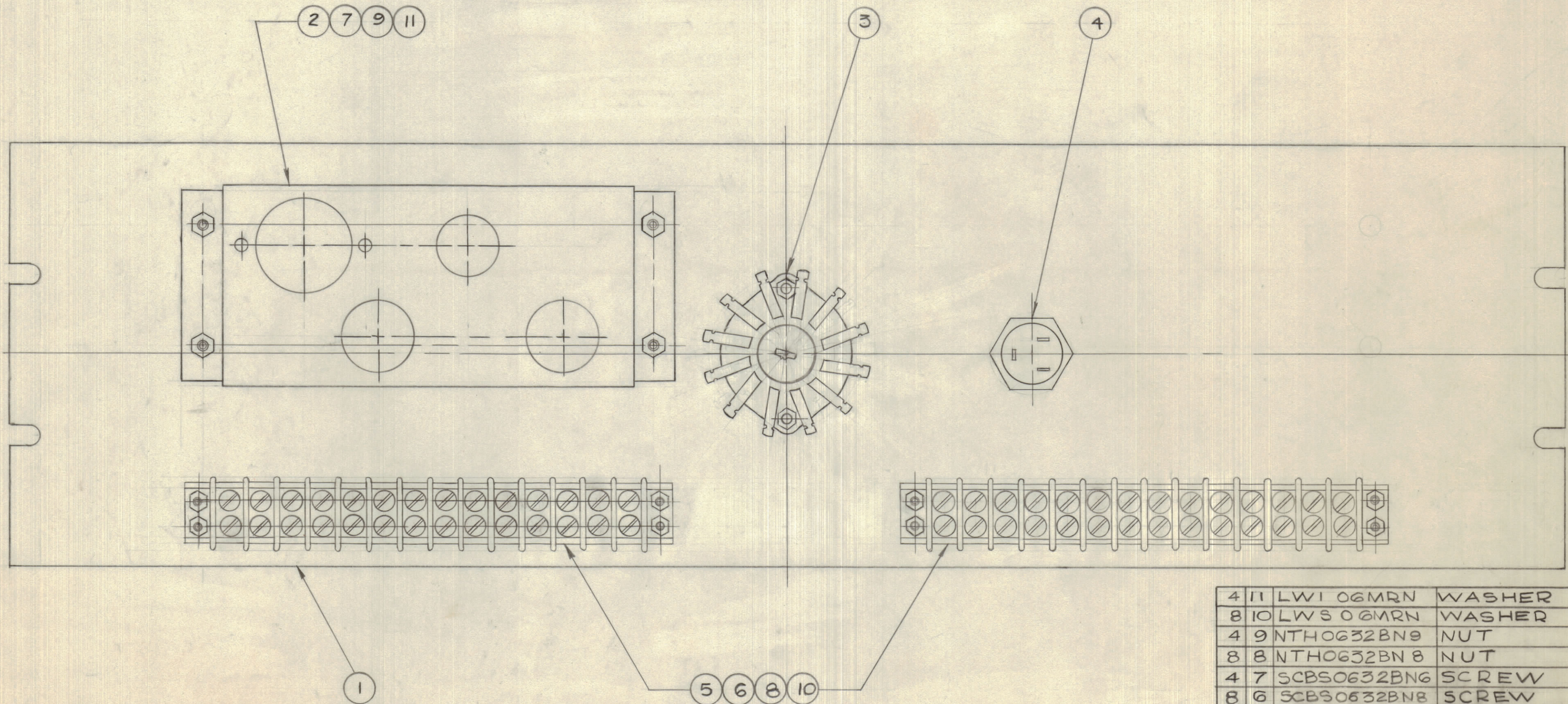
IF IT IS FOUND DESIRABLE TO CHANGE ANY TOLERANCE OR OTHER DETAIL SPECIFIED ON THIS DRAWING NOTIFY THE PURCHASER PROMPTLY.

MAXIMUM ALLOWABLE TOLERANCES HAVE BEEN DETERMINED AND DEVIATIONS WILL BE CAUSE FOR REJECTION. REMOVE ALL BURRS AND SHARP EDGES

NOTICE TO PERSONS RECEIVING THIS DRAWING

THE TECHNICAL MATERIEL CORPORATION claims proprietary right in the material disclosed hereon. This drawing is issued in confidence for engineering information only and may not be reproduced or used to manufacture anything shown hereon without permission from THE TECHNICAL MATERIEL CORPORATION to the user. This drawing is loaned for mutual assistance and is subject to recall at any time.

Property of:
THE TECHNICAL MATERIEL CORPORATION
MAMARONECK, NEW YORK



NOTE:
* SWITCH (ROTARY) 8 POLES 4 POSITIONS

4	11	LW1 06MRN	WASHER
8	10	LWS 06MRN	WASHER
4	9	NTH0632BN9	NUT
8	8	NTH0632BN8	NUT
4	7	SCBS0632BN6	SCREW
8	6	SCBS0632BN8	SCREW
2	5	TM102-14	TERMINAL STRIP
1	4	JJ133-3	JACK
1	3	SPECIAL	SWITCH
1	2	MS10352	CHASSIS
1	1	MS10344	PANEL

REQ.	ITEM	PART No.	DESCRIPTION	SYMBOL
TMC (Canada) LIMITED OTTAWA ONTARIO				
ASSEMBLY OF CTR-3				
DRAWN			ELEC. DES. APP.	MECH. DES. APP.
CHECKED			FINAL APPROVAL	
A10231				

ISSUE	ITEM	CHANGED FROM	DATE	CN. NO.	DRAFTS	CHECKER	ENG. APP.
TOLERANCES							
DEC. DIM. ±			SCALE: 1:1				
FRAC. DIM. ±			DRILL, PUNCH, COMMERCIAL STOCK				
ANGULAR DIM. ±			SIZES AND MANUFACTURERS				
			TOLERANCES ARE NOT INCLUDED.				

CTR-3 P-5002 AUG. 24/59			
MODEL	PROJECT No.	ASS'Y. No.	DATE
USED ON			

A10231