

IF IT IS FOUND DESIRABLE TO CHANGE ANY TOLERANCE OR OTHER DETAIL SPECIFIED ON THIS DRAWING NOTIFY THE PURCHASER PROMPTLY.

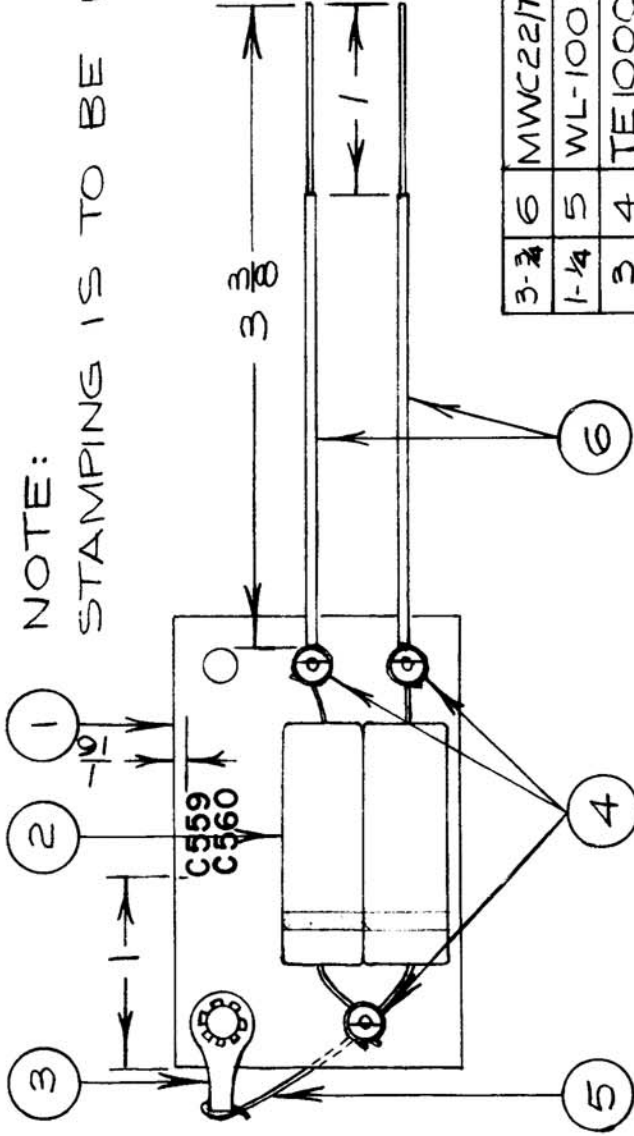
MAXIMUM ALLOWABLE TOLERANCES HAVE BEEN DETERMINED AND DEVIATIONS WILL BE CAUSE FOR REJECTION. REMOVE ALL BURRS AND SHARP EDGES

A10214 A

USED ON

MODEL PROJECT NO. ASS'Y. NO. DATE

AMC-65.CE646 A10219 5/27/60



NOTE:
STAMPING IS TO BE BLACK & 1/8 HIGH.

| REQ. | ITEM | PART NO. | DESCRIPTION | SYMBOL |
|-------|------|------------|-----------------------|--------|
| 3-2 | 6 | MWC22/7U90 | WIRE - WH/BLACK . | |
| 1-1/4 | 5 | WL-100-7 | WIRE -BUSS BAR NO.22. | |
| 3 | 4 | TE10003-1 | TERMINAL | |
| 1 | 3 | TE104-3 | SOLDER LUG | |
| 2 | 2 | CN100-17 | CAPACITOR | |
| 1 | 1 | PP10004 | TERMINAL BOARD | |

STOCK SIZE

TMC(Canada) LIMITED
OTTAWA ONTARIO

MATERIAL WEIGHT PER PC

ASS'Y

TYPE & TEMPER

JPC

HEAT TREAT. SPEC.

CHECKED

FINISH & SPEC. NO.

A10214 A

ISSUE ITEM

REDRAWN

5/27/60

JC

CHANGED FROM

DATE

CN. NO

DRAFTS

CHECKER

ENG. APP.

TOLERANCES

SCALE 1:1

DIMENSIONS IN INCHES UNLESS OTHERWISE SPECIFIED

DRILL, PUNCH, COMMERCIAL STOCK SIZES AND MANUFACTURERS TOLERANCES ARE NOT INCLUDED.