

IF IT IS FOUND DESIRABLE TO CHANGE ANY TOLERANCE OR OTHER DETAIL SPECIFIED ON THIS DRAWING NOTIFY THE PURCHASER PROMPTLY.

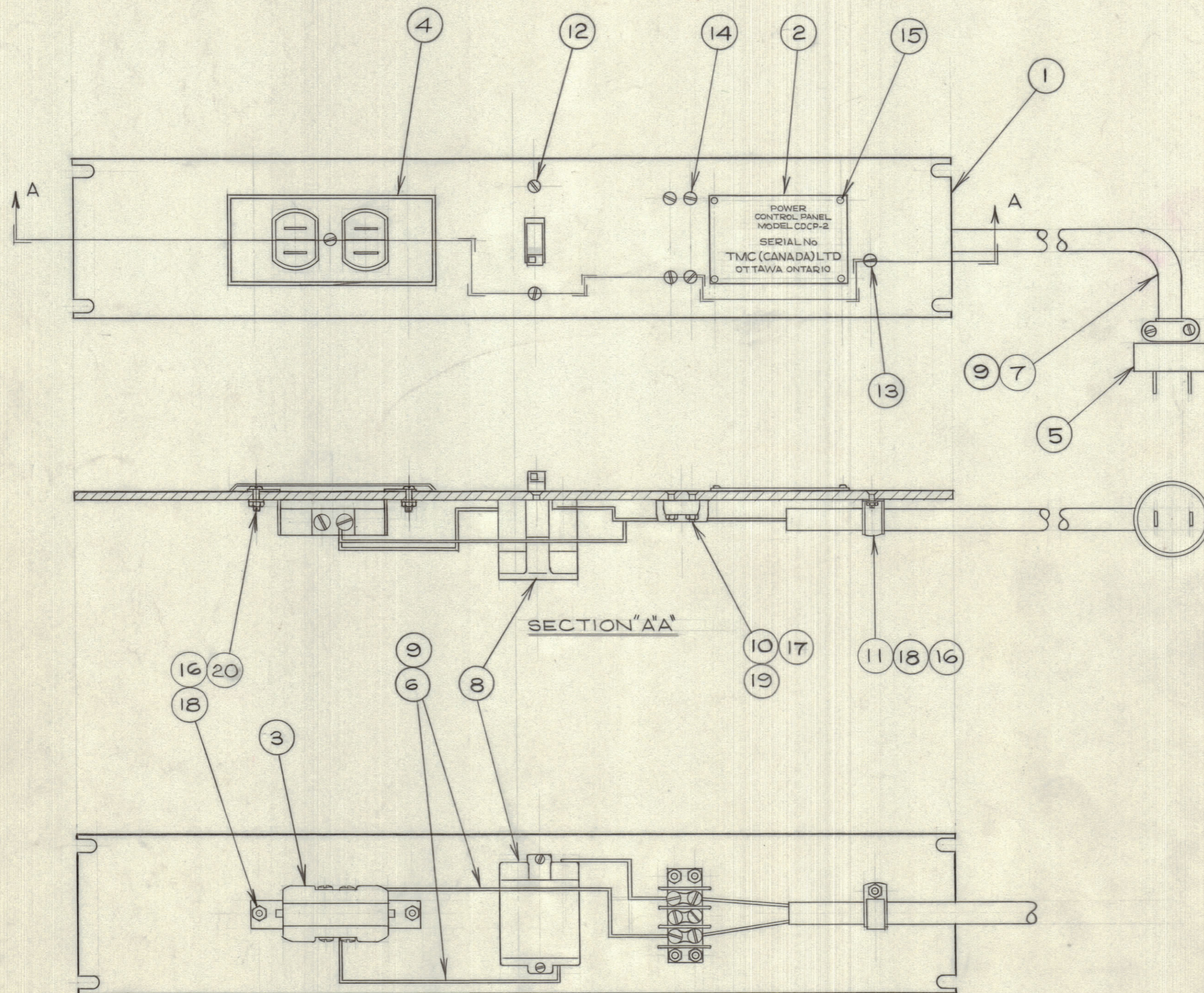
MAXIMUM ALLOWABLE TOLERANCES HAVE BEEN DETERMINED AND DEVIATIONS WILL BE CAUSE FOR REJECTION. REMOVE ALL BURRS AND SHARP EDGES

NOTICE TO PERSONS RECEIVING THIS DRAWING

THE TECHNICAL MATERIEL CORPORATION claims proprietary right in the material disclosed hereon. This drawing is issued in confidence for engineering information only and may not be reproduced or used to manufacture anything shown hereon without permission from THE TECHNICAL MATERIEL CORPORATION to the user. This drawing is loaned for mutual assistance and is subject to recall at any time.

Property of:

THE TECHNICAL MATERIEL CORPORATION
MAMARONECK, NEW YORK



NOTES:

- Δ #16 B&S GA. NORTHERN ELECTRIC FLAME SEAL
- * TYPE SJ LIGHT, 2 CONDUCTOR #16 B&S GA - NORTHERN ELECTRIC
- ⊙ GENERAL ELECTRIC - CR-1061-GE-POA WITH GE-9710-G HEATER
- ◇ CINCH JONES #3-141

2	20	SCBS0632BC8	SCREW	
4	19	LWS08MRC	WASHER	
3	18	LWS06MRC	"	
4	17	NTH0832BC8	NUT	
3	16	NTH0632BC8	"	
4	15	SC102-1	SCREW	
4	14	SCFS0832BC12	"	
1	13	SCFS0632BC8	"	
2	12	SCFS0632BC5	"	
1	11	CUI02-4	CLIP	
◇	1	10	TMI20-3	TERMINAL STRIP
8	9	TE120-2	LUG TERMINAL (STYLE II, FLANGED)	
⊙	1	8		CIRCUIT BREAKER
*	10	FT	7	CABLE
Δ	24"	6		WIRE
1	5	9754		PLUG - HUBBELL
1	4	6854		COVER - HUBBELL
1	3	HUBBELL 9690		RECEPTACLE - DUPLEX, FLUSH
REF	2	LD10055		NAMEPLATE
REF	1	MS10315		PANEL

REQ.	ITEM	PART NO.	DESCRIPTION	SYMBOL
TMC (Canada) LIMITED OTTAWA ONTARIO				
SERVICE PANEL				
CDCP-2				
STOCK SIZE			DCM	
MATERIAL			DRAWN	ELEC. DES. APP. MECH. DES. APP.
TYPE & TEMPER			CHECKED	FINAL APPROVAL
HEAT TREAT. SPEC.			A10181 A	
FINISH & SPEC. No.				

ISSUE	ITEM	CHANGED FROM	DATE	CN. NO.	DRAFTS	CHECKER	ENG. APP.
A	3	WAS MTD. BEHIND PANEL ADDED QTY WAS 3	AUG 12/1959		DM		
TOLERANCES		SCALE: 1/2					
ALL OTHERS	DEC. DIM. ± FRAC. DIM. ± ANGULAR DIM. ±	DRILL, PUNCH, COMMERCIAL STOCK SIZES AND MANUFACTURERS TOLERANCES ARE NOT INCLUDED.					

CDCP-2 P8966

APR20/59

MODEL	PROJECT No.	ASS'Y. No.	DATE

USED ON

A10181 A