

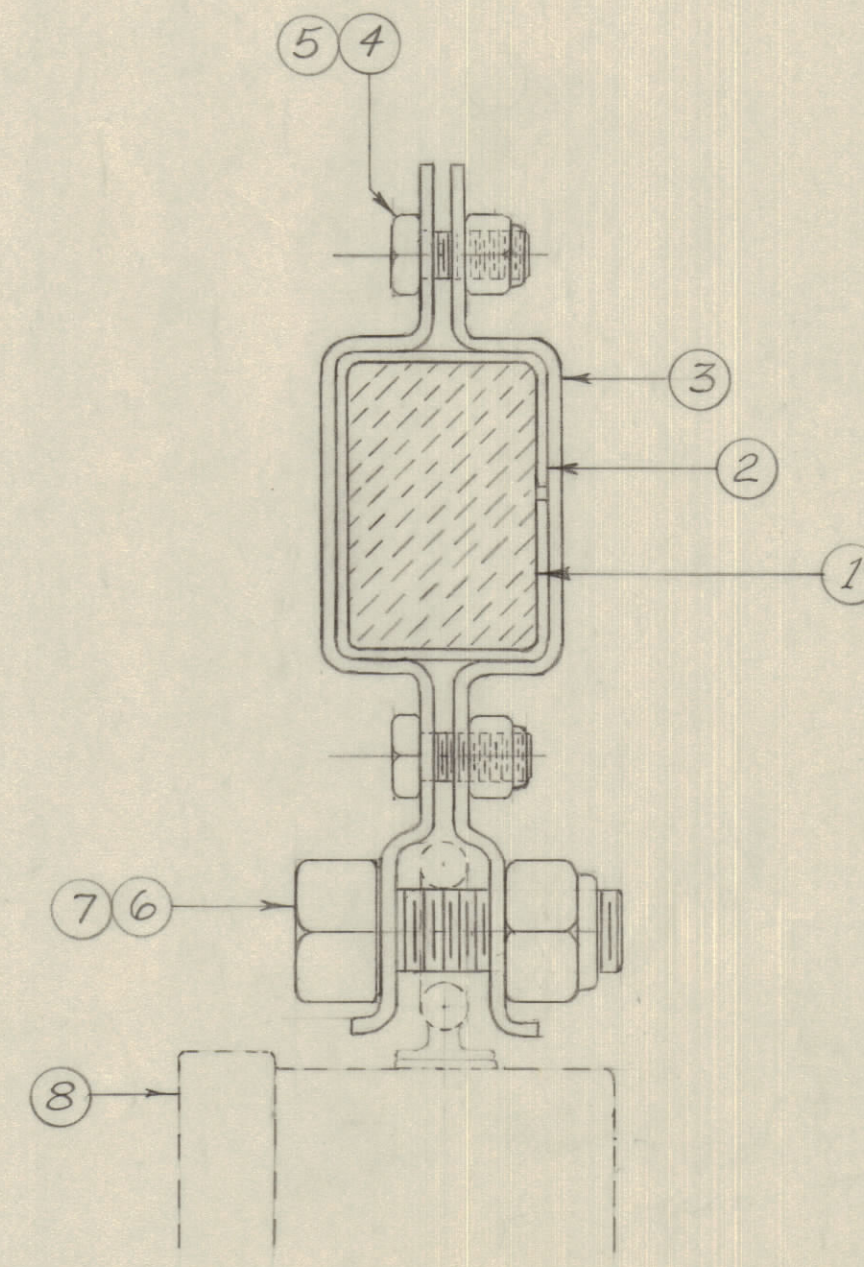
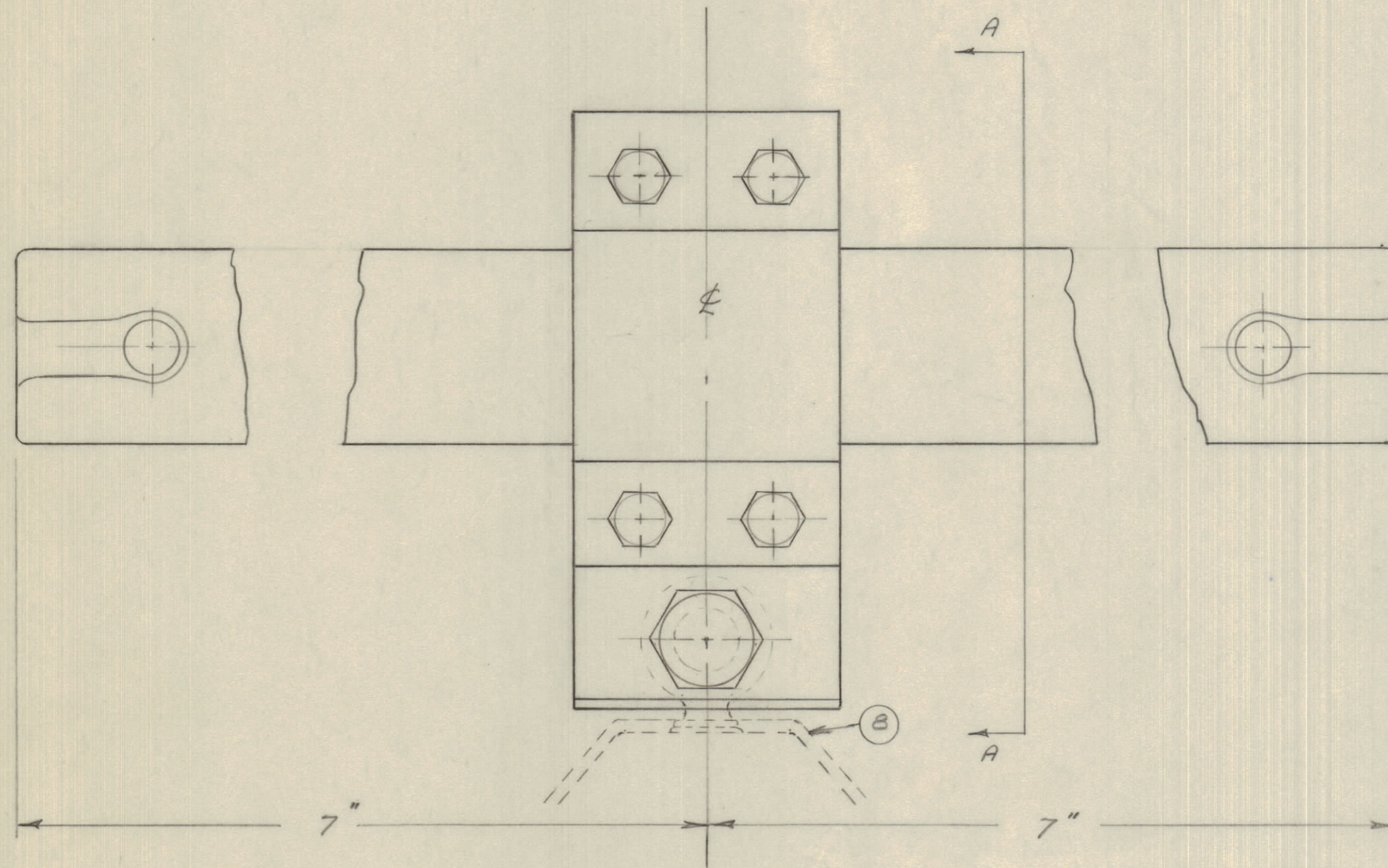
IF IT IS FOUND DESIRABLE TO CHANGE ANY TOLERANCE OR OTHER DETAIL SPECIFIED ON THIS DRAWING NOTIFY THE PURCHASER PROMPTLY.

MAXIMUM ALLOWABLE TOLERANCES HAVE BEEN DETERMINED AND DEVIATIONS WILL BE CAUSE FOR REJECTION. REMOVE ALL BURRS AND SHARP EDGES

NOTICE TO PERSONS RECEIVING THIS DRAWING

THE TECHNICAL MATERIEL CORPORATION claims proprietary right in the material disclosed hereon. This drawing is issued in confidence for engineering information only and may not be reproduced or used to manufacture anything shown hereon without permission from THE TECHNICAL MATERIEL CORPORATION to the user. This drawing is loaned for mutual assistance and is subject to recall at any time.

Property of:  
THE TECHNICAL MATERIEL CORPORATION  
MAMARONECK, NEW YORK



SECTION A-A

A-10083

1	8	A-10080	DIPOLE ANTENNA COUPLER
1	7		NUT 7/16-14 CADMIUM FIBRE INSERT
1	6		SCREW-MACHINE MILD STEEL 7/16-14x1/4
4	5		NUT 1/4-20 CADMIUM FIBRE INSERT
4	4		SCREW-MACHINE MILD STEEL 1/4-20x1/2
2	3	MS-10163	BRACKET
1	2	RY-10001	CUSHION - NEOPRENE
1	1	NS-10002	INSULATOR

REQ.	ITEM	PART NO.	DESCRIPTION	SYMBOL
			<b>TMC (Canada) LIMITED</b> OTTAWA ONTARIO	
STOCK SIZE			ANTENNA MATCHING TRANSFORMER	
MATERIAL			MOUNTING BRACKET ASSEMBLY	
WEIGHT PER PC.			L. MARION	
TYPE & TEMPER			DRAWN	
HEAT TREAT. SPEC.			ELEC. DES. APP. MECH. DES. APP.	
CHECKED			M. Jurbo	
FINISH & SPEC. NO.			FINAL APPROVAL	
			A-10083	

ISSUE	ITEM	CHANGED FROM	DATE	CN. NO.	DRAFTS	CHECKER	ENG. APP.
TOLERANCES							
SCALE: Full Size				DRILL, PUNCH, COMMERCIAL STOCK SIZES AND MANUFACTURERS TOLERANCES ARE NOT INCLUDED.			
ALL OTHERS	DEC. DIM. ±	FRAC. DIM. ±	ANGULAR DIM. ±				

MODEL	PROJECT NO.	ASS'Y. NO.	DATE
	A-10080		28/5/56
USED ON			