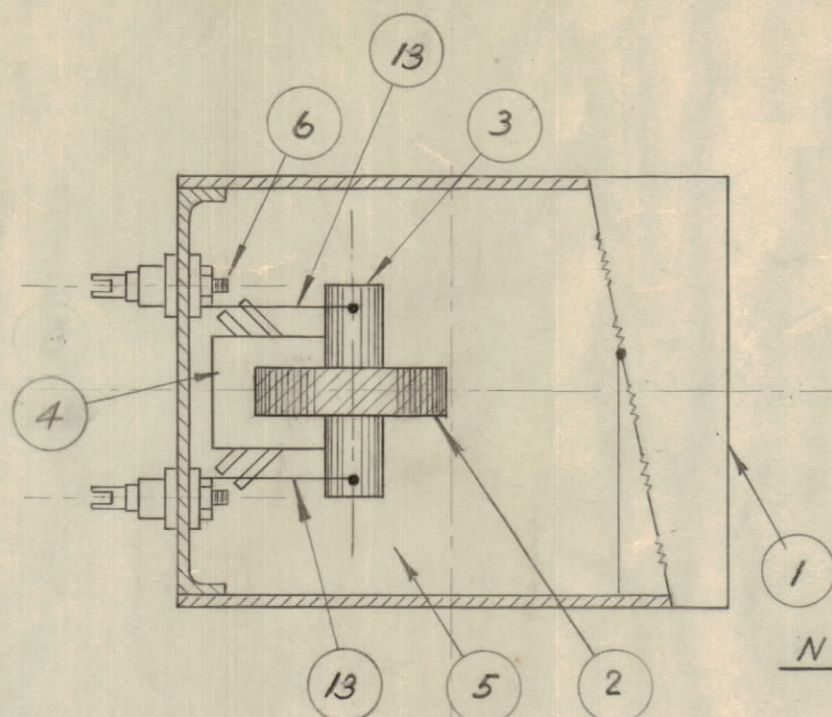
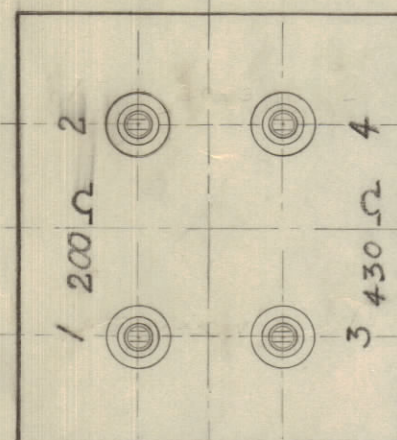


IF IT IS FOUND DESIRABLE TO CHANGE ANY TOLERANCE OR OTHER DETAIL SPECIFIED ON THIS DRAWING NOTIFY THE PURCHASER PROMPTLY.

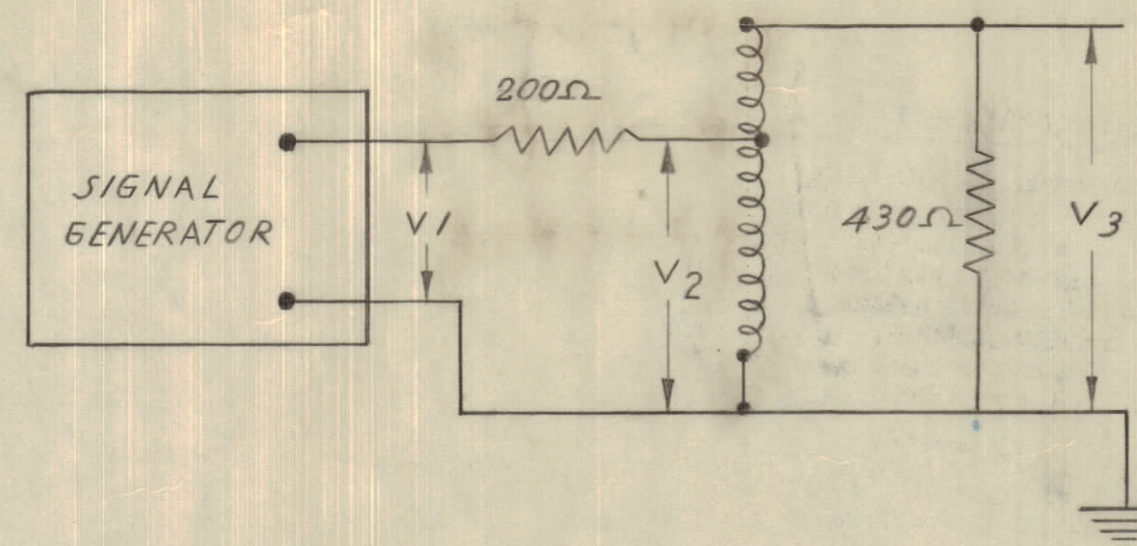
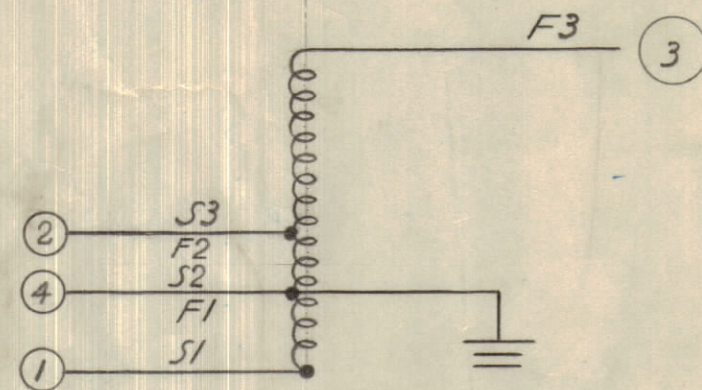
MAXIMUM ALLOWABLE TOLERANCES HAVE BEEN DETERMINED AND DEVIATIONS WILL BE CAUSE FOR REJECTION. REMOVE ALL BURRS AND SHARP EDGES

CONFIDENTIAL

ELECTRICAL TEST DATA



NOTE: S-114 ZINC CHROMATE PRIMER  
S-115 SMOOTH GREY ENAMEL.



FREQ.	* R.F. VOLTS			
	V1	V2	V3	DB
2 MC/S	1	.44	.40	4 DB
8 MC/S	1	.46	.42	—
28 MC/S	1	.36	.20	65 DB
32 MC/S	1	.29	.16	84 DB

\* VOLTAGES MEASURED WITH H.P.V.T.V. M.

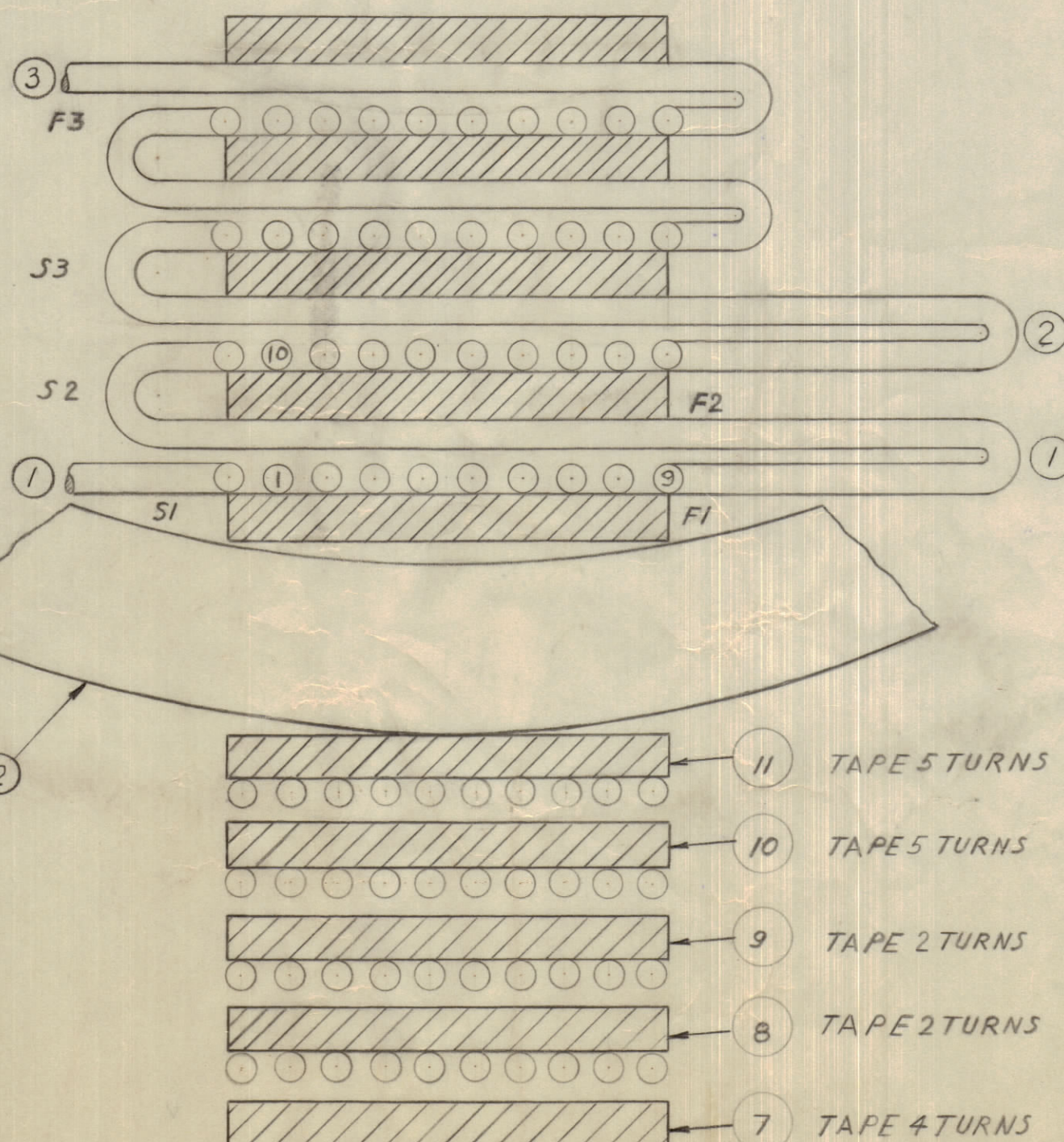
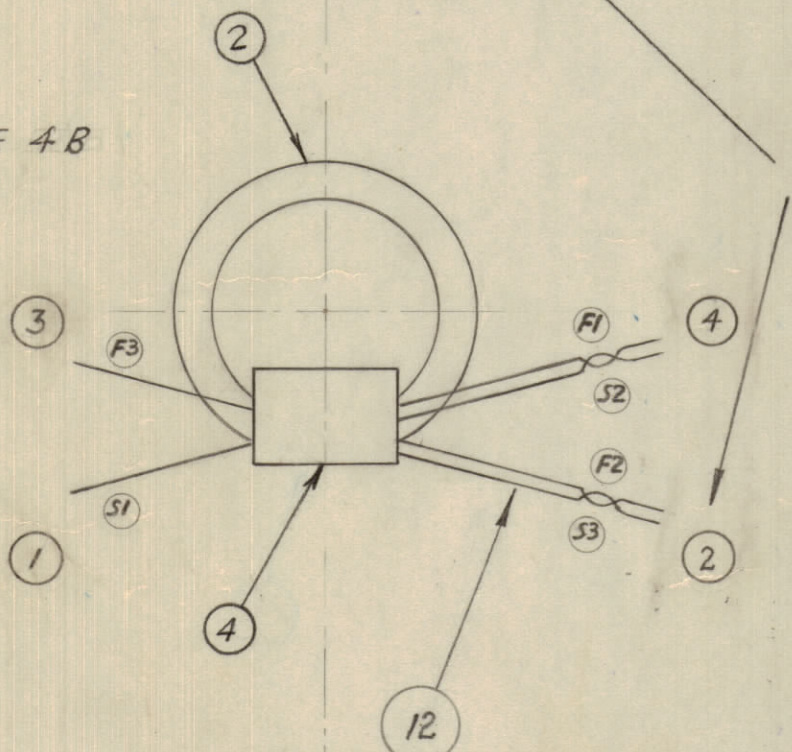
$$DB \text{ DOWN} = 20 \log_{10} \frac{V3(8mc)}{V3(28, 28, 32 mc)}$$

1-2 INPUT 200Ω BALANCED  
3-4 OUTPUT 430Ω UNBALANCED  
TOL. ± 8 DB

A-10075 A

NUMBERS IN CIRCLES INDICATE TERMINAL NUMBERS AS SHOWN ON COVER

CORE 4B



NOTICE TO PERSONS RECEIVING THIS DRAWING

THE TECHNICAL MATERIEL CORPORATION claims proprietary right in the material disclosed hereon. This drawing is issued in confidence for engineering information only and may not be reproduced or used to manufacture anything shown hereon without permission from THE TECHNICAL MATERIEL CORPORATION to the user. This drawing is loaned for mutual assistance and is subject to recall at any time.

Property of:

THE TECHNICAL MATERIEL CORPORATION  
MAMARONECK, NEW YORK

NOT TO BE RELEASED  
W/O AUTHORIZATION

AUTH. BY \_\_\_\_\_  
DATE: \_\_\_\_\_

REQ.	ITEM	PART NO.	DESCRIPTION	SYMBOL
2	13	MS-10259	STABILIZER	
A/R	12	WI-10007	No 30 D.C.C. WIRE	
1	11	TA-10004	5 LAYERS TAPE MASKING	
1	10	TA-10004	5 LAYERS TAPE MASKING	
1	9	TA-10004	2 LAYERS TAPE MASKING	
1	8	TA-10001-1	2 LAYER TAPE MASKING	
1	7	TA-10001-1	4 LAYERS TAPE MASKING	
A	6	TE-101-1	FEED THROUGH CERAMIC	
A/R	5	6L-106	POTTING COMPOUND	
1	4		TR067 WINDING	
1	3	CF10012	COIL FORM	
1	2	CI10001-2	CORE 4B	
1	1	BX-105	CAN, (BOTTOM, BODY, LID)	

REQ.	ITEM	PART NO.	DESCRIPTION	SYMBOL
<b>TMC (Canada) LIMITED</b> OTTAWA ONTARIO				
TRANSFORMER INPUT TR-067				
MATERIAL		WEIGHT PER PC.		
TYPE & TEMPER		DRAWN		
HEAT TREAT. SPEC.		ELEC. DES. APP.		
FINISH & SPEC. NO.		MECH. DES. APP.		
		CHECKED		
		FINAL APPROVAL		
		A-10075 A		

A	1	BILL OF MATERIAL REVISED	27 JAN 1961	WHD		
ISSUE	ITEM	CHANGED FROM	DATE	CN. NO.	DRAFTS	CHECKER
TOLERANCES		SCALE:				
ALL OTHERS	DEC. DIM. ±	DRILL, PUNCH, COMMERCIAL STOCK SIZES AND MANUFACTURERS TOLERANCES ARE NOT INCLUDED.				
	FRAC. DIM. ±					
	ANGULAR DIM. ±					

14 Aug 1956

MODEL	PROJECT NO.	ASS'Y. NO.	DATE
USED ON			