

IF IT IS FOUND DESIRABLE TO CHANGE ANY TOLERANCE OR OTHER DETAIL SPECIFIED ON THIS DRAWING NOTIFY THE PURCHASER PROMPTLY.

MAXIMUM ALLOWABLE TOLERANCES HAVE BEEN DETERMINED AND DEVIATIONS WILL BE CAUSE FOR REJECTION. REMOVE ALL BURRS AND SHARP EDGES

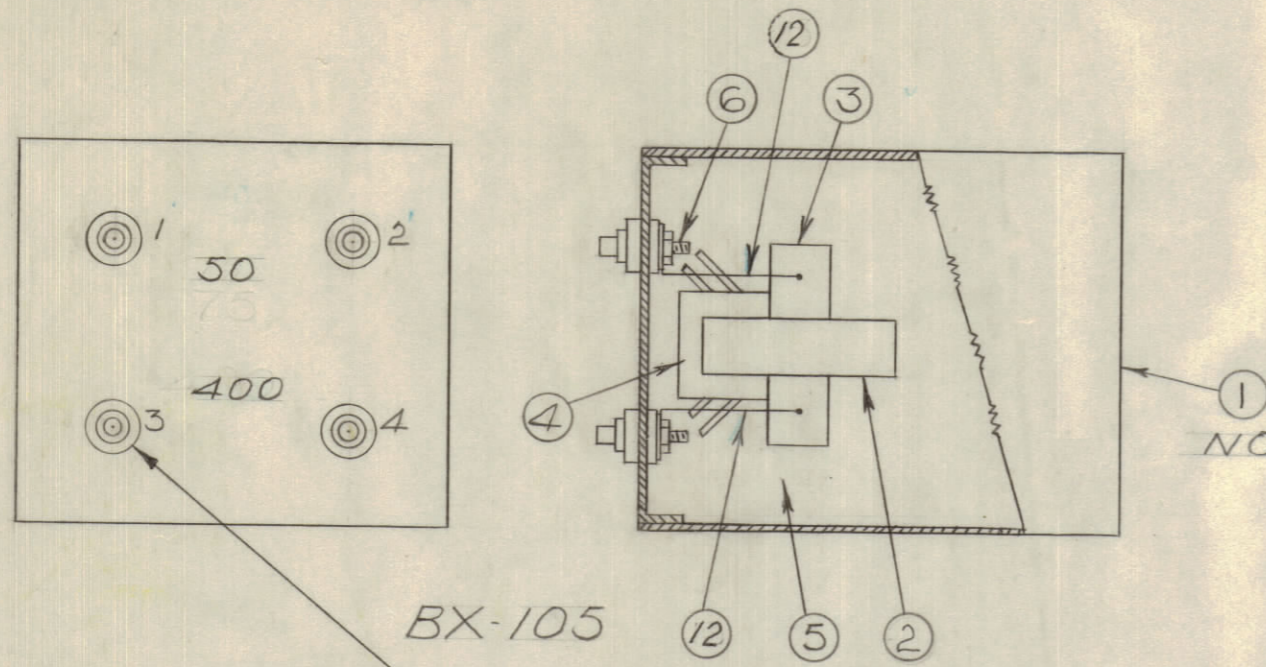
CONFIDENTIAL

ELECTRICAL TEST DATA

NOTICE TO PERSONS RECEIVING THIS DRAWING

THE TECHNICAL MATERIEL CORPORATION claims proprietary right in the material disclosed hereon. This drawing is issued in confidence for engineering information only and may not be reproduced or used to manufacture anything shown hereon without permission from THE TECHNICAL MATERIEL CORPORATION to the user. This drawing is loaned for mutual assistance and is subject to recall at any time.

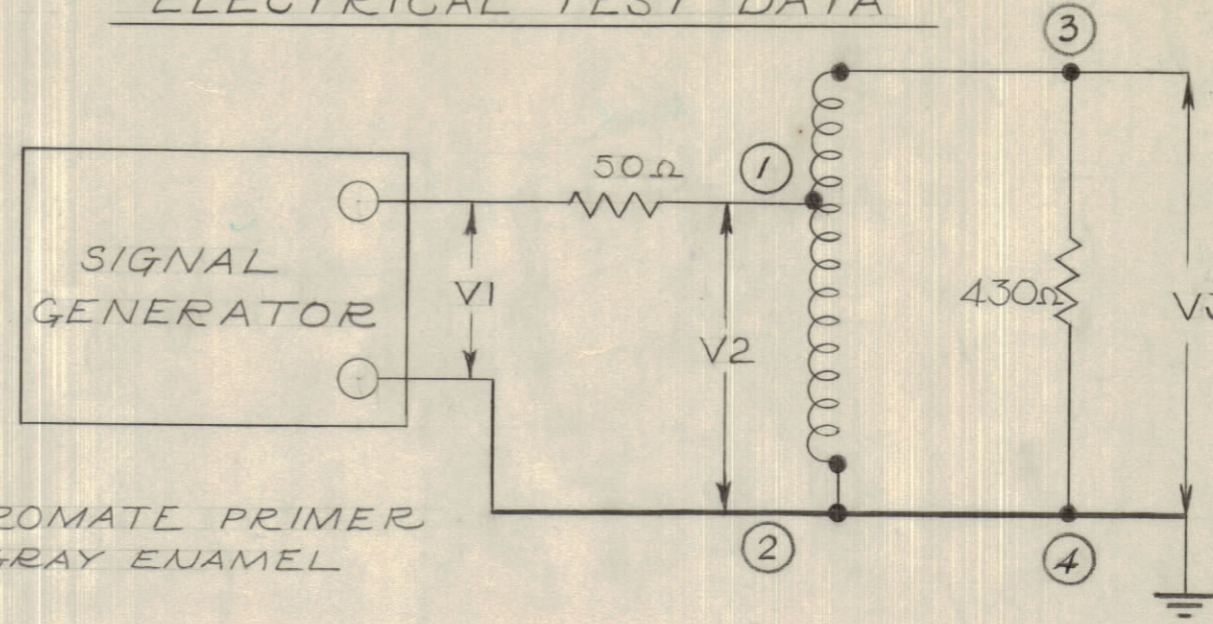
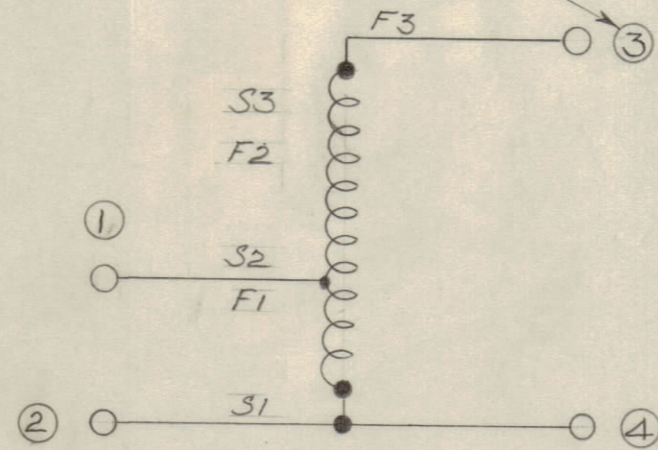
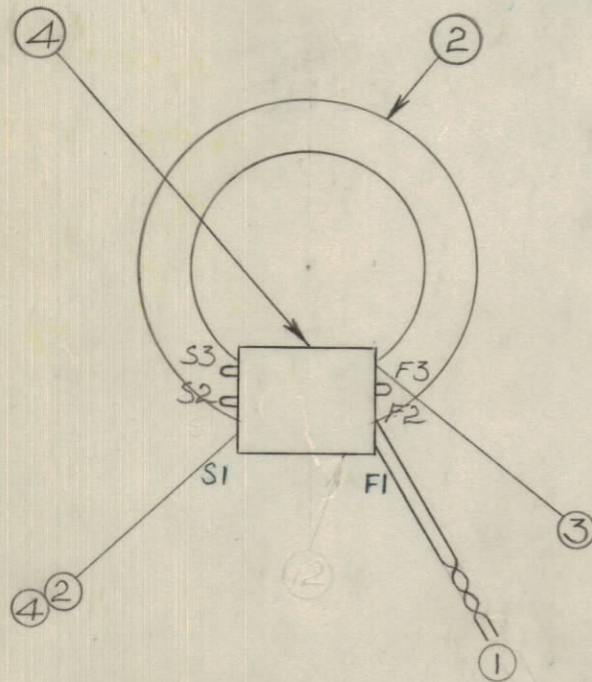
Property of:
THE TECHNICAL MATERIEL CORPORATION
MAMARONECK, NEW YORK



BX-105

NOTE: S-114 ZINC CHROMATE PRIMER
S-115 SMOOTH GRAY ENAMEL

NUMBERS IN CIRCLES INDICATE TERMINAL NUMBERS AS SHOWN ON COVER



RF VOLTAGES @ 2, 8, 24, & 32 MHz
(MEASURED WITH HP VTVM)

FREQ	VOL	V1	V2	V3	DB DOWN
2	1.0	1.0 ± 0.1	0.5 ± 0.05	1.4 ± 0.1	0
8	1.0	1.0 ± 0.1	0.5 ± 0.05	1.4 ± 0.1	0
24	1.0	1.0 ± 0.1	0.5 ± 0.05	1.4 ± 0.1	0.6 DB
32	1.0	1.0 ± 0.1	0.5 ± 0.05	1.4 ± 0.1	1.2 DB

* VOLTAGES MEASURED WITH HP VTVM

DB DOWN = 20 LOG₁₀ (V3 / (V1 * V2))

1-2 INPUT 50Ω UNBALANCED

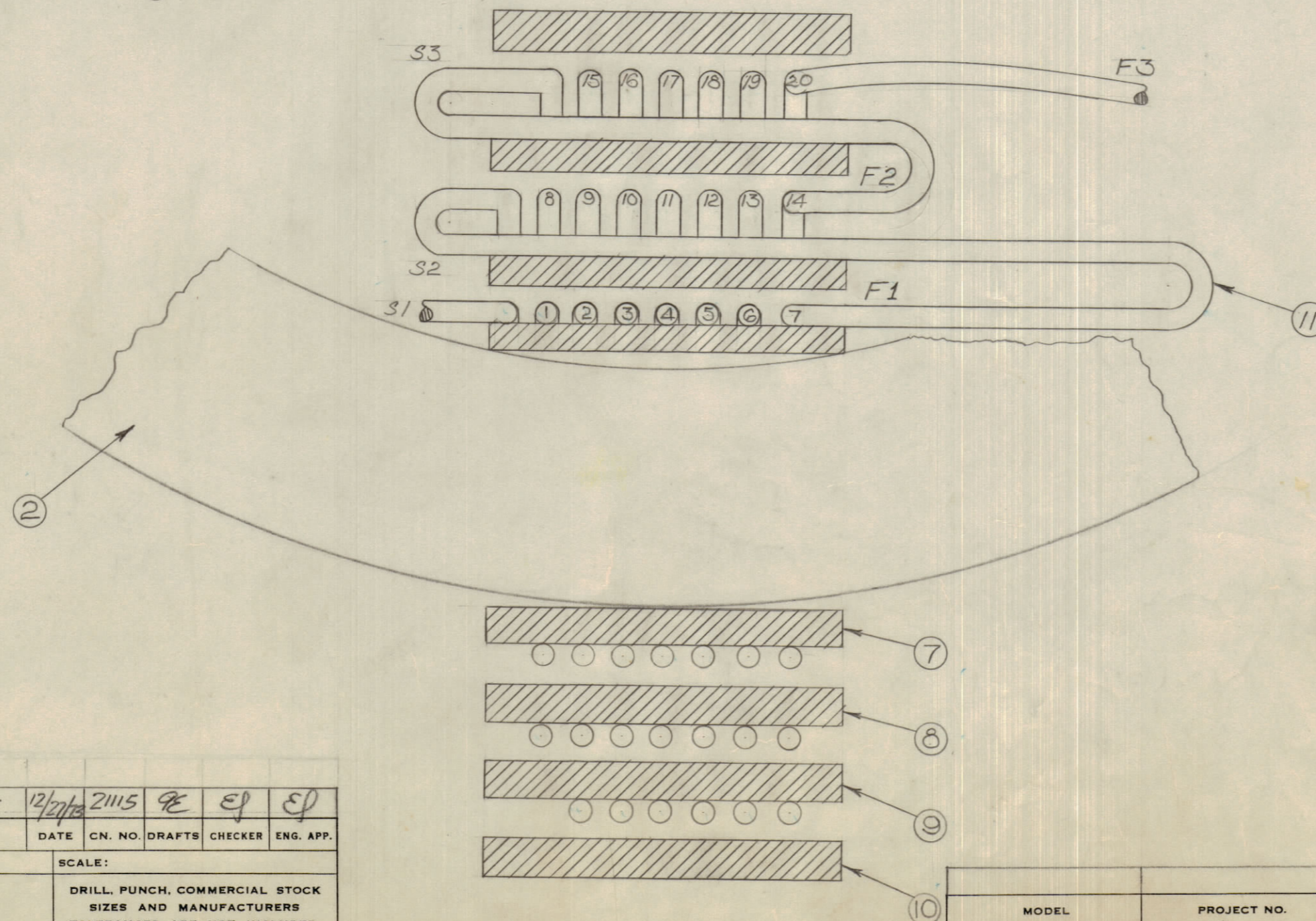
3-4 OUTPUT 400Ω UNBALANCED

APPLY TWO COATS OF RADIO CEMENT AFTER FINISHING ITEM 10

A-10074 A

NOT TO BE RELEASED
W/O AUTHORIZATION

AUTH. BY: _____
DATE: _____



REQ. ITEM	PART NO.	DESCRIPTION	SYMBOL
2	12	MS-10259	STABILIZER
1	11	WI-10007-1	Nº30 D.C.C. WIRE
1	10	TA-10001-1	7 LAYERS TAPE MASKING
1	9	TA-10001-1	6 LAYERS TAPE MASKING
1	8	TA-10001-1	2 LAYERS TAPE MASKING
1	7	TA-10001-1	5 LAYERS TAPE MASKING
4	6	TE-101-1	FEED THROUGH - CERAMIC
X	5	GL-106	POTTING COMPOUND
1	4		TR 063 WINDING
1	3	CF-10012	COIL FORM
1	2	CI10001-2	CORE 48
1	1	BX 105	CAN, (BOTTOM, BODY, LID).

STOCK SIZE		TMC(Canada) LIMITED OTTAWA ONTARIO	
MATERIAL			
WEIGHT PER PC.		TRANSFORMER INPUT	
TYPE & TEMPER		TR 063	
HEAT TREAT. SPEC.		T.HONG	
FINISH & SPEC. NO.		L.M.	
		DRAWN	
		ELEC. DES. APP.	
		MECH. DES. APP.	
		CHECKED	
		FINAL APPROVAL	
		A-10074 A	

ISSUE	ITEM	CHANGED FROM	DATE	CN. NO.	DRAFTS	CHECKER	ENG. APP.
A		DELE OLD REVLT CHT	12/27/56	21115	9E	EP	EP
TOLERANCES		SCALE:					
ALL OTHERS	DEC. DIM. ±	DRILL, PUNCH, COMMERCIAL STOCK					
	FRAC. DIM. ±	SIZES AND MANUFACTURERS					
	ANGULAR DIM. ±	TOLERANCES ARE NOT INCLUDED.					

MODEL	PROJECT NO.	ASS'Y. NO.	DATE
			9/8/56
USED ON			