

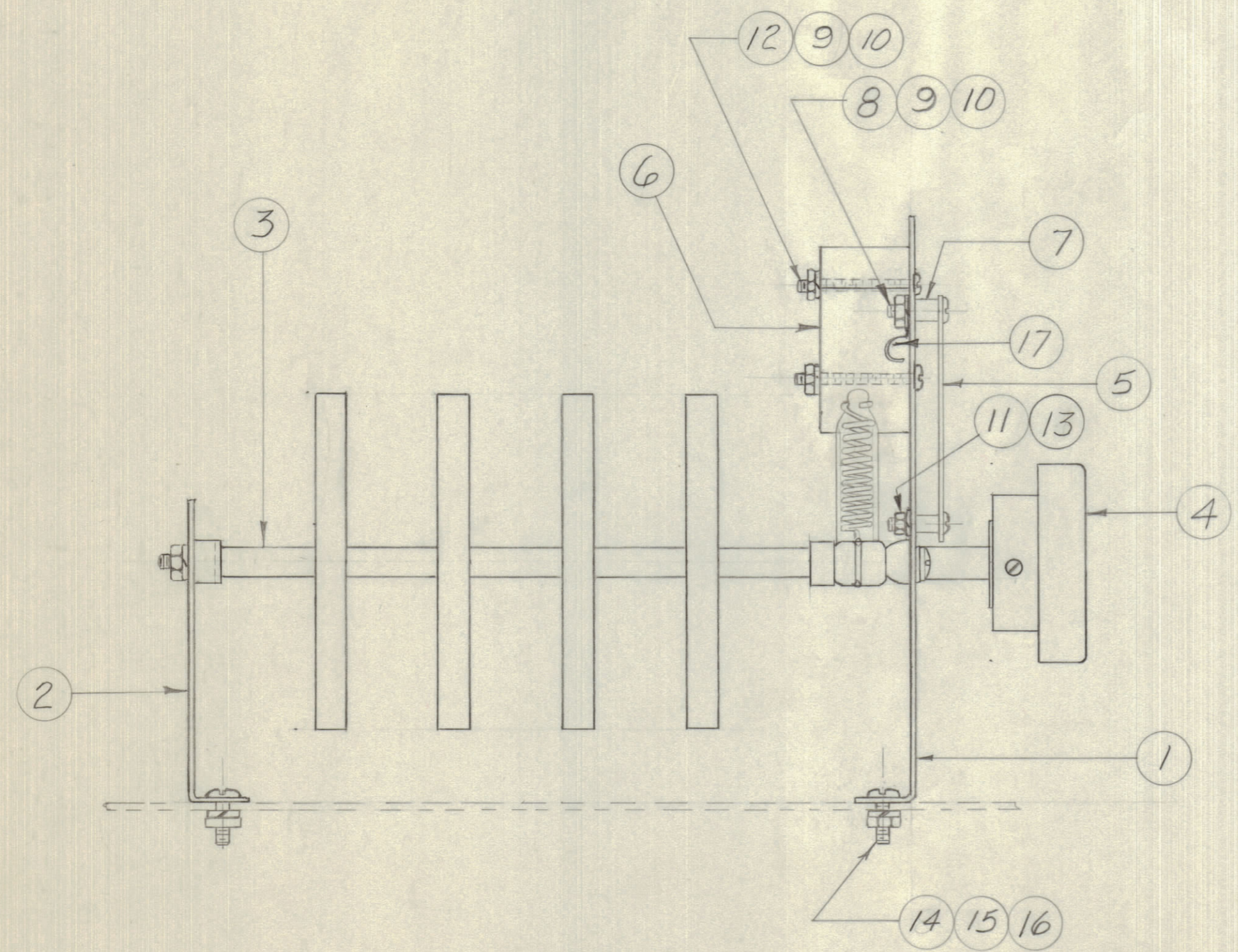
IF IT IS FOUND DESIRABLE TO CHANGE ANY TOLERANCE OR OTHER DETAIL SPECIFIED ON THIS DRAWING NOTIFY THE PURCHASER PROMPTLY.

MAXIMUM ALLOWABLE TOLERANCES HAVE BEEN DETERMINED AND DEVIATIONS WILL BE CAUSE FOR REJECTION. REMOVE ALL BURRS AND SHARP EDGES

**NOTICE TO PERSONS RECEIVING THIS DRAWING**

THE TECHNICAL MATERIEL CORPORATION claims proprietary right in the material disclosed hereon. This drawing is issued in confidence for engineering information only and may not be reproduced or used to manufacture anything shown hereon without permission from THE TECHNICAL MATERIEL CORPORATION to the user. This drawing is loaned for mutual assistance and is subject to recall at any time.

Property of:  
THE TECHNICAL MATERIEL CORPORATION  
MAMARONECK, NEW YORK



A-10066

1	17	CU-104-5	CLAMP
4	16	LWS06MRC	LOCKWASHER SPRING .06
4	15	NTH0632BC8	NUT HEX. 6-32
4	14	SCBS0632BC6	SCREW MACHINE 6-32 x 3/8
2	13	LWS04LEC	LOCKWASHER (SPRING .04)
2	12	SCBS0440BC16	SCREW MACHINE 4-40 x 1"
4	11	NTH0440BC6	NUT HEX. 4-40
4	10	LWS04MRC	LOCKWASHER (SPRING) .04
2	9	NTH0440BC8	NUT HEX. 4-40
4	8	SCBS0440BC6	SCREW MACHINE 4-40 x 3/8
4	7	TE-117-21	STAND-OFF SPACER
1	6	SW-10006	MICRO SWITCH
1	5	LD-10013 MS-10138	INDICATOR PLATE
1	4	MP-10001	KNOB
1	3	SW-10005	ROTARY SWITCH (SELECTOR)
1	2	MS-10134	BRACKET SELECTOR MOUNTING
1	1	LD-10019 MS-10135	BRACKET SELECTOR MOUNTING

REQ. ITEM	PART NO.	DESCRIPTION	SYMBOL
<b>TMC (Canada) LIMITED</b>			
STOCK SIZE		OTTAWA	ONTARIO
SELECTOR SUB ASSEMBLY			
MATERIAL		WEIGHT PER PC.	
TEMTR. R.F. SWITCHING UNIT			
L. MARION			
TYPE & TEMPER		DRAWN	ELEC. DES. APP. MECH. DES. APP.
HEAT TREAT. SPEC.		CHECKED	FINAL APPROVAL
FINISH & SPEC. NO.		A-10066	

ISSUE	ITEM	CHANGED FROM	DATE	CN. NO.	DRAFTS	CHECKER	ENG. APP.
TOLERANCES		SCALE: <i>Full Size</i>					
ALL OTHERS	DEC. DIM. ± FRAC. DIM. ± ANGULAR DIM. ±	DRILL, PUNCH, COMMERCIAL STOCK SIZES AND MANUFACTURERS TOLERANCES ARE NOT INCLUDED.					

MODEL	PROJECT NO.	ASS'Y. NO.	DATE
			<i>29/11/55</i>
USED ON			