

IF IT IS FOUND DESIRABLE TO CHANGE ANY TOLERANCE OR OTHER DETAIL SPECIFIED ON THIS DRAWING NOTIFY THE PURCHASER PROMPTLY.

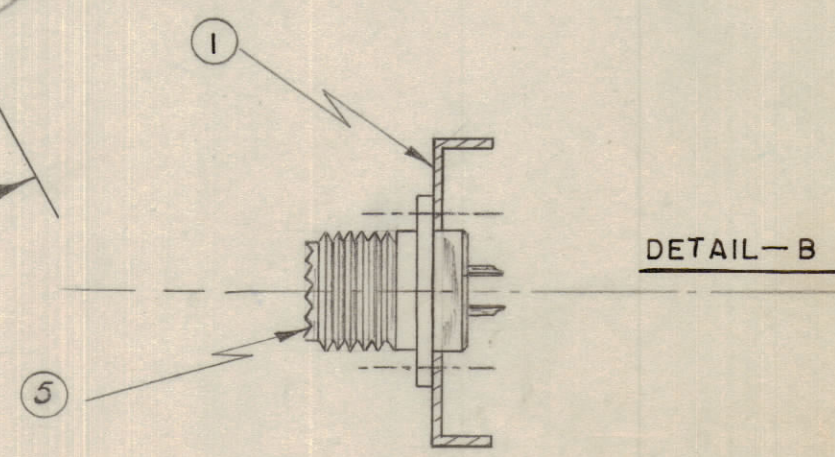
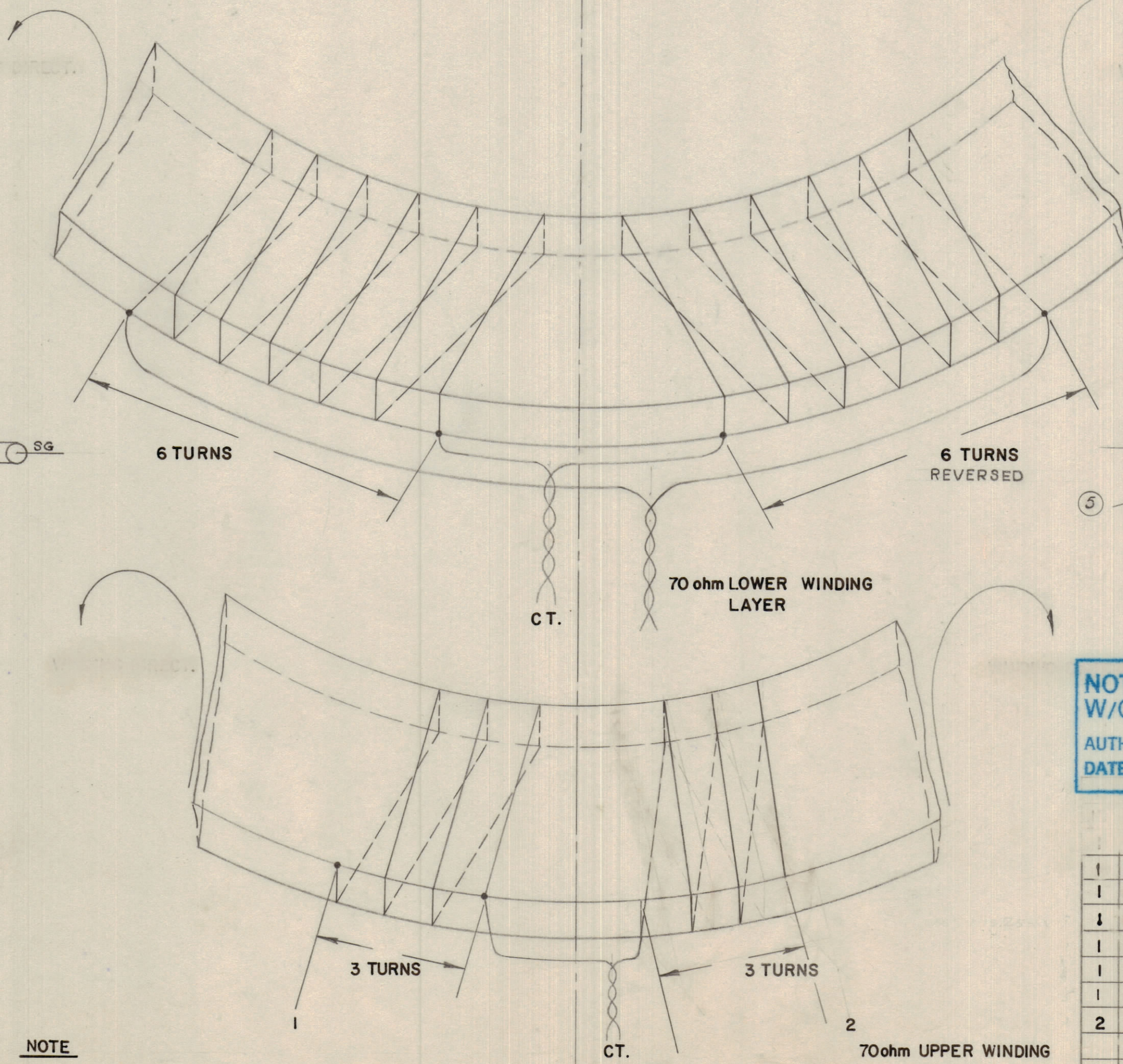
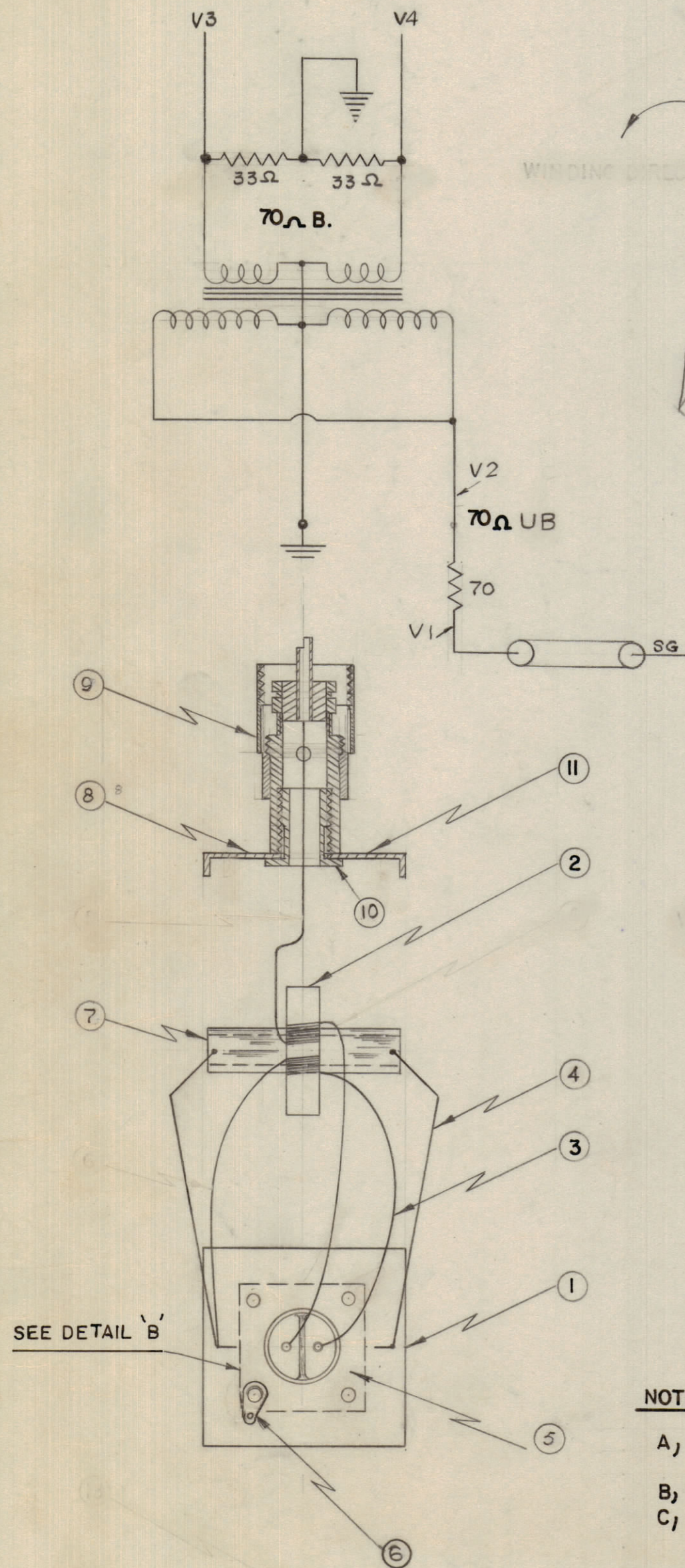
MAXIMUM ALLOWABLE TOLERANCES HAVE BEEN DETERMINED AND DEVIATIONS WILL BE CAUSE FOR REJECTION. REMOVE ALL BURRS AND SHARP EDGES

NOTICE TO PERSONS RECEIVING THIS DRAWING

THE TECHNICAL MATERIEL CORPORATION claims proprietary right in the material disclosed hereon. This drawing is issued in confidence for engineering information only and may not be reproduced or used to manufacture anything shown hereon without permission from THE TECHNICAL MATERIEL CORPORATION to the user. This drawing is loaned for mutual assistance and is subject to recall at any time.

Property of:  
THE TECHNICAL MATERIEL CORPORATION  
MAMARONECK, NEW YORK

**CONFIDENTIAL.**



A-10 042. 4

NOT TO BE RELEASED  
W/O AUTHORIZATION  
AUTH. BY \_\_\_\_\_  
DATE: \_\_\_\_\_

- NOTE**
- A, NO LAYER OF INSULATION IN BETWEEN WINDING LAYERS
  - B, WIRE SIZE IS NO 30 DCC
  - C, WINDINGS OF UPPER LAYER MUST BE LAID EXACTLY BETWEEN WINDINGS OF LOWER LAYER AS SHOWN IN DETAIL - 'A'.
  - D, CORE TYPE 3B OR 3C
  - E. CT OF UPPER AND LOWER LAYER SOLDER TO TERMINAL LID AND STABILISER.

TEST RESULTS

F/M/C	V <sub>1</sub>	V <sub>2</sub>	V <sub>3</sub>	V <sub>4</sub>
2	1.0	.50 ±.05	.24 <sup>±.05</sup>	.24 <sup>±.05</sup>
8	1.0	.50 ±.05	.24 <sup>±.05</sup>	.24 <sup>±.05</sup>
28	1.0	.55 ±.10	.2 <sup>±.06</sup>	.2 <sup>±.2</sup>

REQ.	ITEM	PART NO.	DESCRIPTION	SYMBOL
1	10	UG-176-U	CONNECTOR	
1	9	PL-259 A	JACK	
1	8	MS10525-1	TERMINAL LID UNBALANCED SIDE	
1	7	CF-10012	COIL FORM	
1	6	TE-110-2	LUG SOLDER	
1	5	UG 103/U	AMPHENOL JACK	
2	4	MS-10259	STABILISER	
A/R	3	WI-10001-11	WIRE #30 DCC	
1	2	CI-10001-3	" CORE GRADE 3C	
1	1	MS10525-2	TERMINAL LID BALANCED SIDE	

A	1	BOM ALTERED SCHEMATIC CHANGED TEST RESULTS ADDED	27 DEC 1960	WHD		
ISSUE	ITEM	CHANGED FROM	DATE	CN. NO.	DRAFTS	CHECKER
TOLERANCES		SCALE: —				
ALL OTHERS	DEC. DIM. ± FRAC. DIM. ± ANGULAR DIM. ±	DRILL, PUNCH, COMMERCIAL STOCK SIZES AND MANUFACTURERS TOLERANCES ARE NOT INCLUDED.				

MODEL	PROJECT NO.	ASS'Y. NO.	DATE
			7. 10. 58
USED ON			

STOCK SIZE			TMC (Canada) LIMITED OTTAWA ONTARIO		
MATERIAL			TRANSFORMER		
WEIGHT PER PC.			TR 061		
TYPE & TEMPER			<i>Paul M. P.</i> DRAWN      ELEC. DES. APP.      MECH. DES. APP.		
HEAT TREAT. SPEC.			CHECKED      FINAL APPROVAL		
FINISH & SPEC. NO.			A-10 042 4		