

IF IT IS FOUND DESIRABLE TO CHANGE ANY TOLERANCE OR OTHER DETAIL SPECIFIED ON THIS DRAWING NOTIFY THE PURCHASER PROMPTLY.

MAXIMUM ALLOWABLE TOLERANCES HAVE BEEN DETERMINED AND DEVIATIONS WILL BE CAUSE FOR REJECTION. REMOVE ALL BURRS AND SHARP EDGES

CONFIDENTIAL

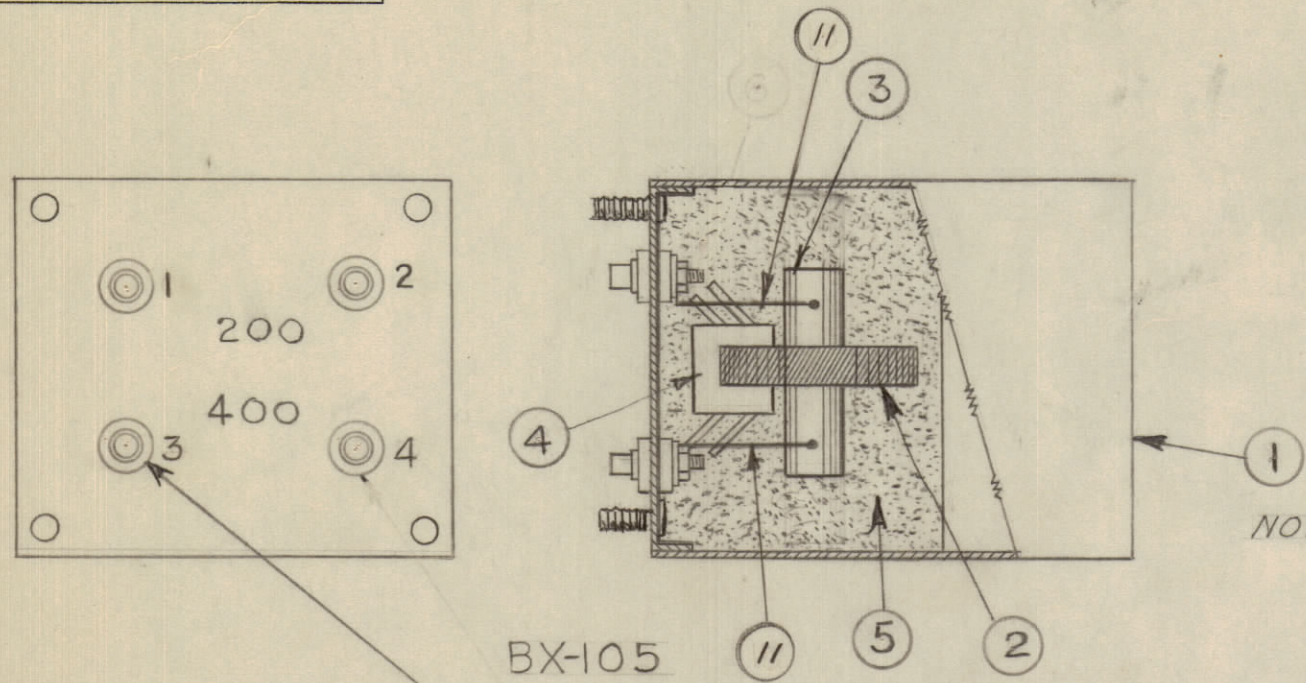
ELECTRICAL TEST DATA

NOTICE TO PERSONS RECEIVING THIS DRAWING

THE TECHNICAL MATERIEL CORPORATION claims proprietary right in the material disclosed hereon. This drawing is issued in confidence for engineering information only and may not be reproduced or used to manufacture anything shown hereon without permission from THE TECHNICAL MATERIEL CORPORATION to the user. This drawing is loaned for mutual assistance and is subject to recall at any time.

Property of:

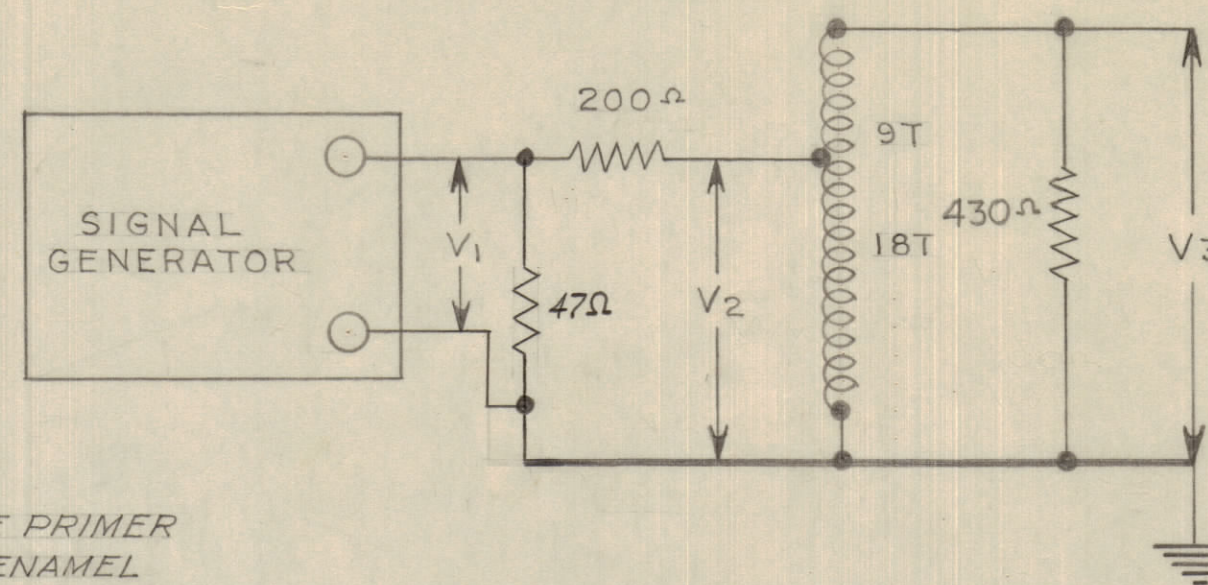
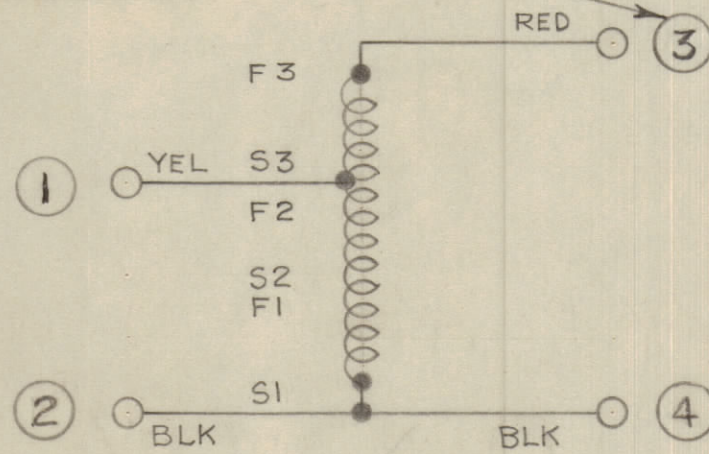
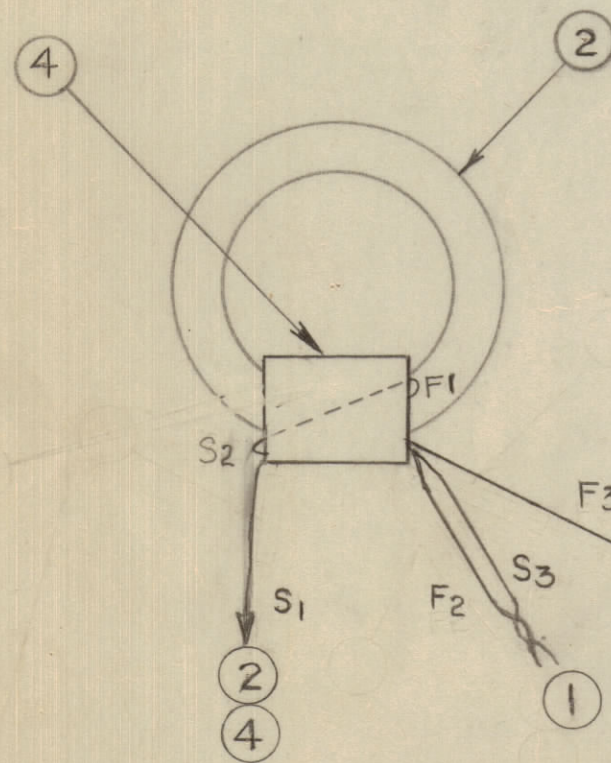
THE TECHNICAL MATERIEL CORPORATION
MAMARONECK, NEW YORK



NOTE: S-114 ZINC CHROMATE PRIMER
S-115 SMOOTH GREY ENAMEL

BX-105

NUMBERS IN CIRCLES INDICATE TERMINAL NUMBERS AS SHOWN ON COVER



f	R.F. VOLTS *				
f mcs	V ₁	V ₂	V ₃	V ₄	DB DOWN
2	1.0	.49	.72		*15DB _{up}
8	1.0	.48	.71		—
32	1.0	.43	.66		.6 DB

* VOLTAGES MEASURED WITH H.P.V.T.VM

$$DB \text{ DOWN} = 20 \log_{10} \frac{V_3 (8 \text{ mc.})}{V_3 (2, 24, 32 \text{ mc.})}$$

1-2 INPUT 200 Ω UNBALANCED

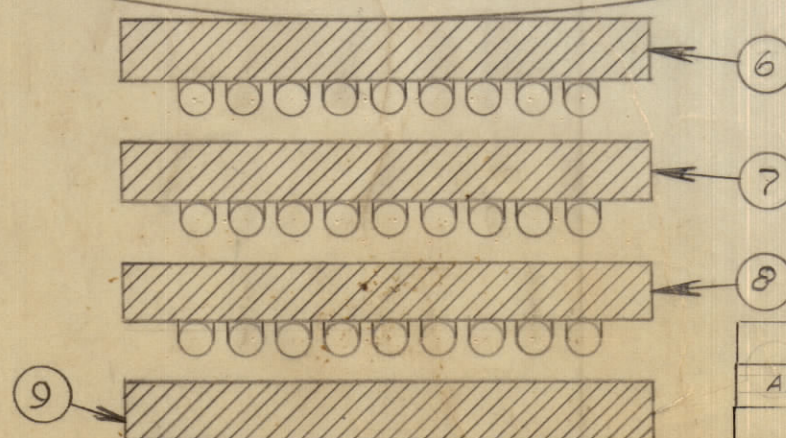
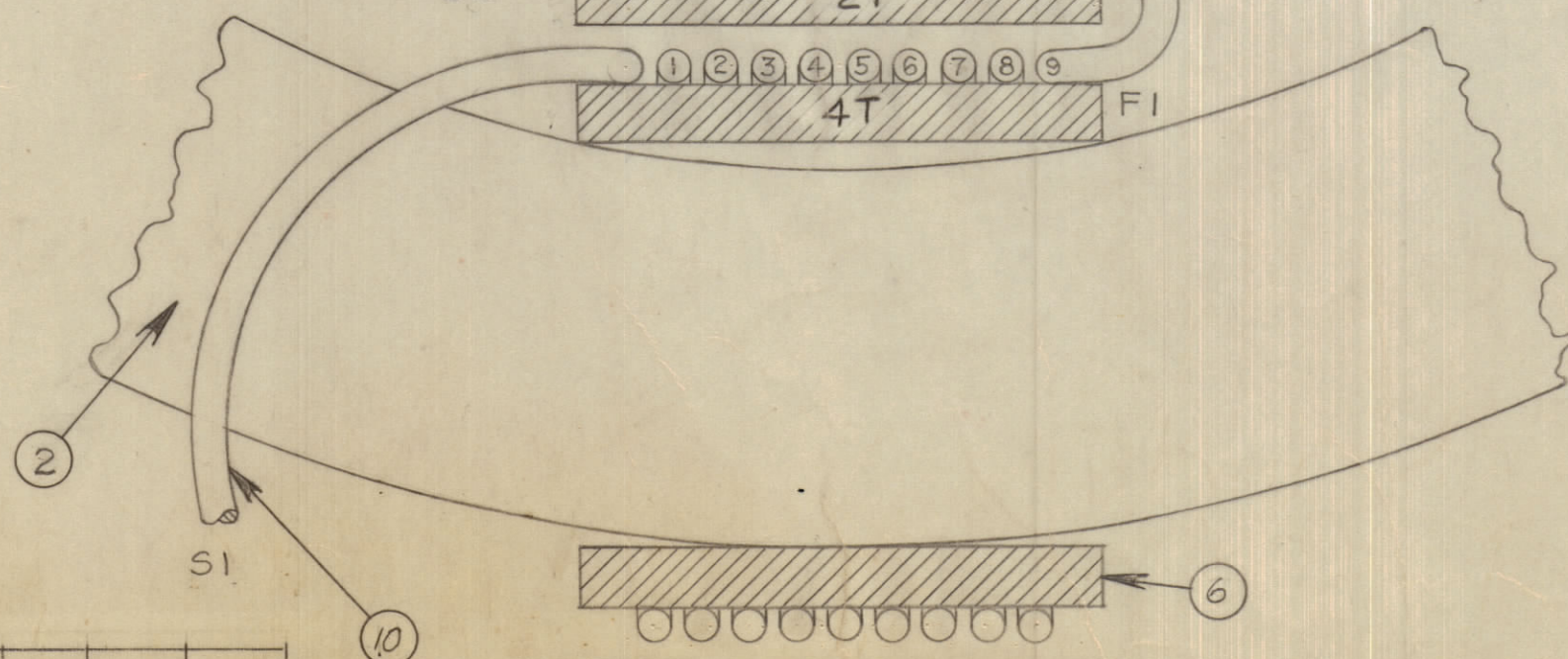
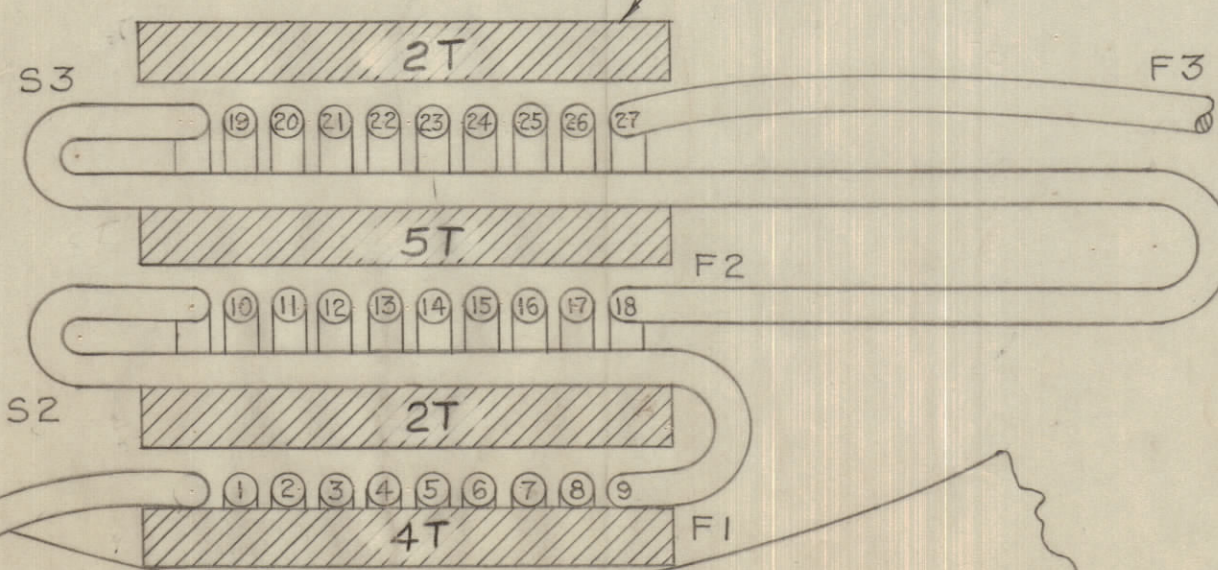
3-4 OUTPUT 400 Ω UNBALANCED

NOTE:

AFTER FINISHING ITEM 9
APPLY TWO COATS OF RADIO CEMENT

A-10041 C

NOT TO BE RELEASED
W/O AUTHORIZATION
AUTH. BY: _____
DATE: _____



C	3	RESISTOR 47 Ω ADDED TO ELECTRICAL TEST DATA BOM REVISED	27 JAN 1961	WHD	LENK	
B	2	ITEM 10 WAS 5 LAYERS TAPE	12/8/55	T.H.	Z.L.M.	
A	1	WL100-4 ADDED	29/6/55			
ISSUE	ITEM	CHANGED FROM	DATE	CN. NO. DRAFTS	CHECKER	ENG. APP.
TOLERANCES		SCALE:				
ALL OTHERS	DEC. DIM. \pm FRAC. DIM. \pm ANGULAR DIM. \pm	DRILL, PUNCH, COMMERCIAL STOCK SIZES AND MANUFACTURERS TOLERANCES ARE NOT INCLUDED.				

AMC6-2/200U			8-6-55
MODEL	PROJECT NO.	ASS'Y. NO.	DATE
USED ON			

1	11	MS-10259	STABILIZER	
1	10	WI-10007	36" No 30 DCC WIRE	
1	9	TA-10001	2 LAYERS TAPE MASKING	
1	8	TA-10001	5 LAYERS TAPE MASKING	
1	7	TA-10001	2 LAYERS TAPE MASKING	
	6	TA-10001	4 LAYERS TAPE MASKING	
	5	GL-106	POTTING COMPOUND	
1	4		TROGO WINDING	
1	3	CF-10012	COIL FORM	
1	2	CI 10001-2	CORE - GRADE IV B	
1	1	BX 105	CASE TRANSFORMER	
REQ. ITEM	PART NO.	DESCRIPTION		SYMBOL
STOCK SIZE		TMC(Canada)LIMITED OTTAWA ONTARIO		
MATERIAL		TRANSFORMER INPUT		
WEIGHT PER PC.		TR-060		
TYPE & TEMPER		EWBG	W 22	
HEAT TREAT. SPEC.		DRAWN	ELEC. DES. APP.	MECH. DES. APP.
FINISH & SPEC. NO.		CHECKED	FINAL APPROVAL	
		A10041 C		