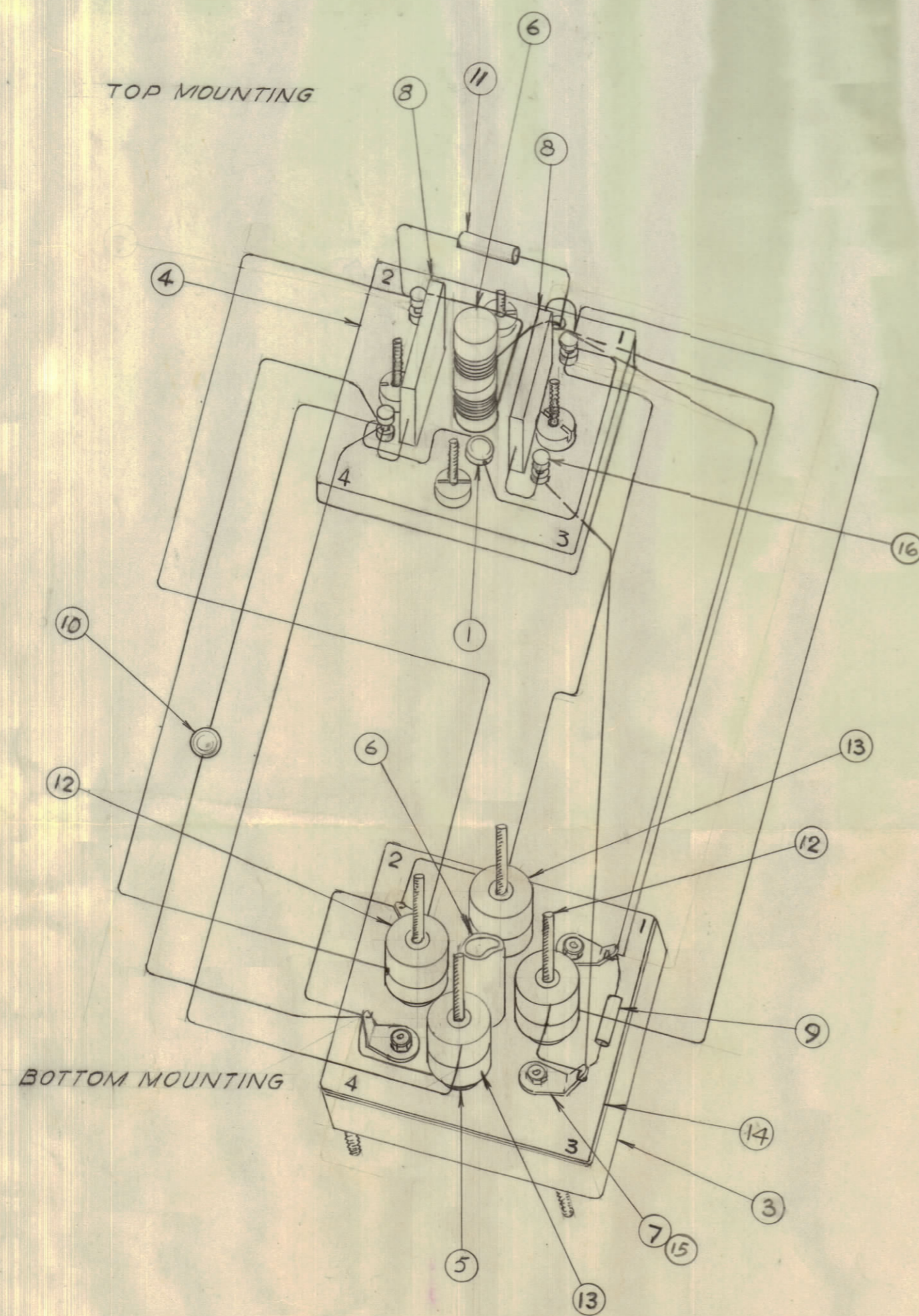
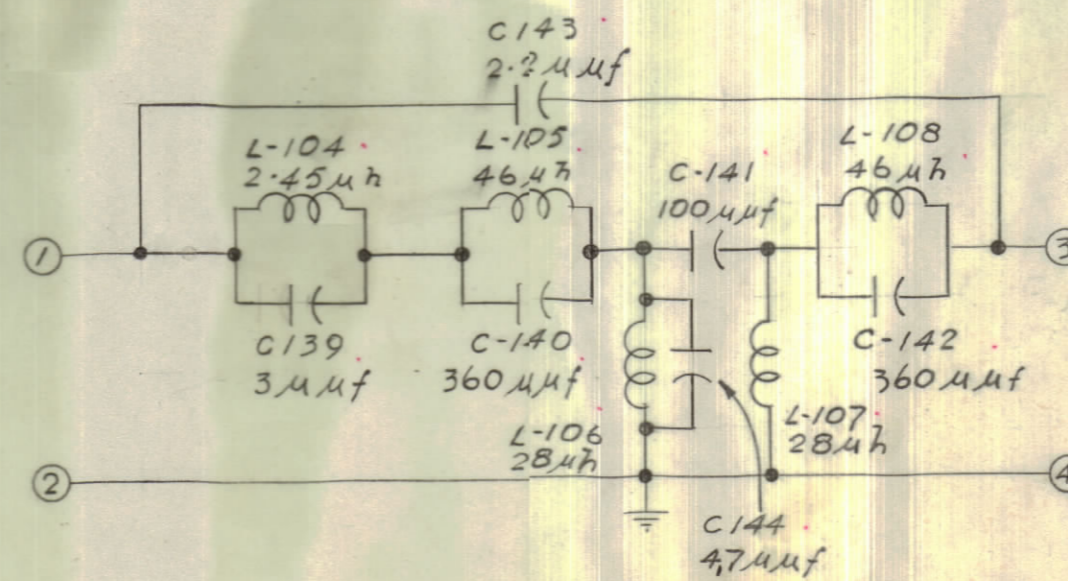


IF IT IS FOUND DESIRABLE TO CHANGE ANY TOLERANCE OR OTHER DETAIL SPECIFIED ON THIS DRAWING NOTIFY THE PURCHASER PROMPTLY.

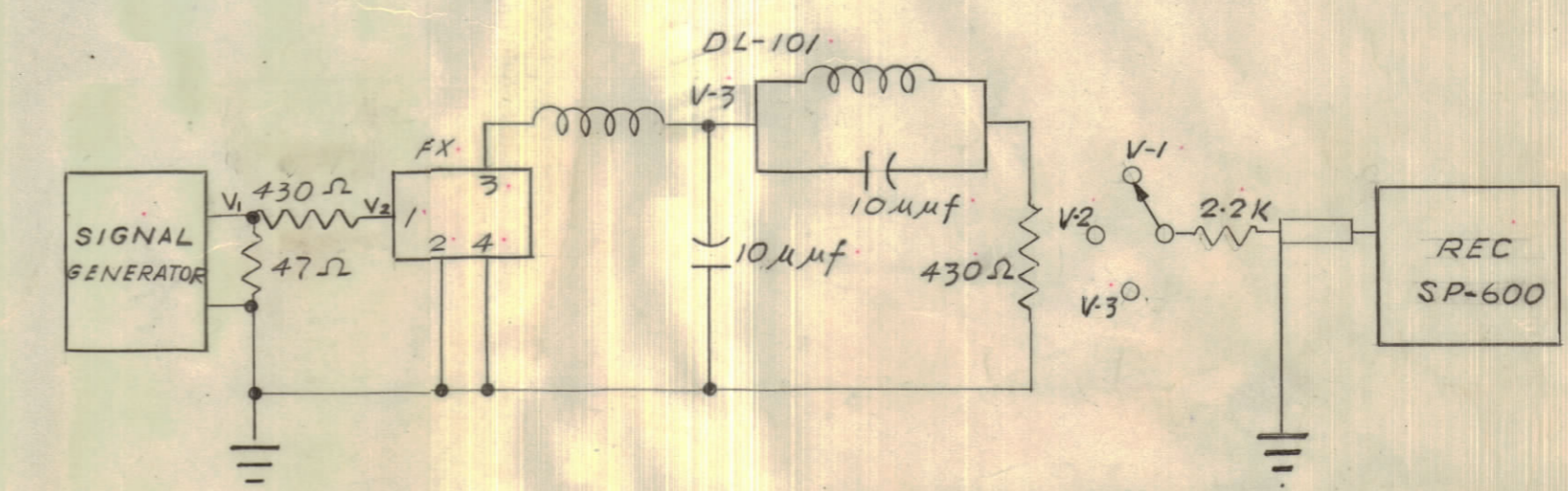
MAXIMUM ALLOWABLE TOLERANCES HAVE BEEN DETERMINED AND DEVIATIONS WILL BE CAUSE FOR REJECTION. REMOVE ALL BURRS AND SHARP EDGES



SCHEMATIC



TEST CONDITION



ELECTRICAL TEST DATA

1. DISCONNECT ONE SIDE OF CAPACITORS C140, C141, C142, & C144.
2. TUNE INDUCTORS, ITEM 12 TO 46 μh ON "Q" METER
3. " " " 13 " 28 μh " " "
4. CONNECT ALL CAPACITORS & TEST FILTER.
5. THE FOLLOWING READINGS SHOULD BE OBTAINED.

F	V ₁ (μv)	V ₂ (μv)	V ₃ (μv)
540 kc	0	100	>4k
800 kc	0	100	>3.5k
1.2 mc	0	100	>4.5k
1.8 mc	0	100	80 ± 20
2.0 mc	100	230 ± 20	V ₂ ± 15
5.0 mc	100	230 ± 10	V ₂ ± 15
24 mc	100	250 ± 25	V ₂ ± 40
28 mc	100	200 ± 60	V ₂ ± 70

NOT TO BE RELEASED W/O AUTHORIZATION
 AUTH. BY _____
 DATE: _____

6. COMPLETE ASSEMBLY BY SOLDERING CAN & PAINTING.

REQ.	ITEM	PART NO.	DESCRIPTION	SYMBOL
4	16	TE10003-1	TERMINAL SOLDER	
4	15	TE101-1	FEED THRU	
1	14	PP10058	MOUNTING PLATE, BOTTOM.	
2	13	A10113-2	POT CORE 40 TURNS	L106
2	12	A10113-1	POT CORE 50 TURNS	L105 L108
1	11	CC215L030C	CAPACITOR 3	C139
1	10	CC10003-9	CAPACITOR 4.7	C144
1	9	CC10003-8	CAPACITOR 2.2	C143
2	8	CM20C361G	CAPACITOR 360	C140 C142
4	7	TE113	SOLDER LUG	
1	6	CL10001	COIL	L104
4	5	RY10003	RUBBER CUSHION	
1	4	PP10059	MOUNTING PLATE, TOP	
1	3	BX100-8S	CAN	
1	1	CC265L101G	CAPACITOR 100 μmf DISC	C141

AMCG-1#3	10 JUNE 1960		
MODE	PROJECT NO.	ASS'Y. No.	DATE
USED ON			

TMC (Canada) LIMITED
 OTTAWA ONTARIO

ASSEMBLY, FX 10002

HIGH PASS FILTER

W.H. DAVISON
 DRAWN: [Signature] ELEC. DES. APP. [Signature] MECH. DES. APP. [Signature]

CHECKED: [Signature] FINAL APPROVAL: [Signature]

A-10014 G

ISSUE	ITEM	CHANGED FROM	DATE	CN. NO.	DRAFTS	CHECKER	ENG. APP.
G	1	IT 1 WAS CC10003-10	11/23/60	15199	M.V.V.	[Signature]	[Signature]
F		ITEM 3 WAS BX105 BX10003 DELETED	MAY 1962		JPC	[Signature]	[Signature]
E		V2 ± 90 WAS V2 ± 90	MAY 19/61	4	JPC	[Signature]	[Signature]
D		A10113-2 WAS A10277-2	7 NOV 1960	3	ENS	[Signature]	[Signature]
C		A10113-1 WAS A10277-1	7 NOV 1960	3	ENS	[Signature]	[Signature]
		CORRECTED	10/24/60	2	JPC	[Signature]	[Signature]
B		REDRAWN AT ISSUE A	10/6/60	1	ENS	[Signature]	[Signature]

SCALE: N.T.S.

DRILL, PUNCH, COMMERCIAL STOCK SIZES AND MANUFACTURERS TOLERANCES ARE NOT INCLUDED.