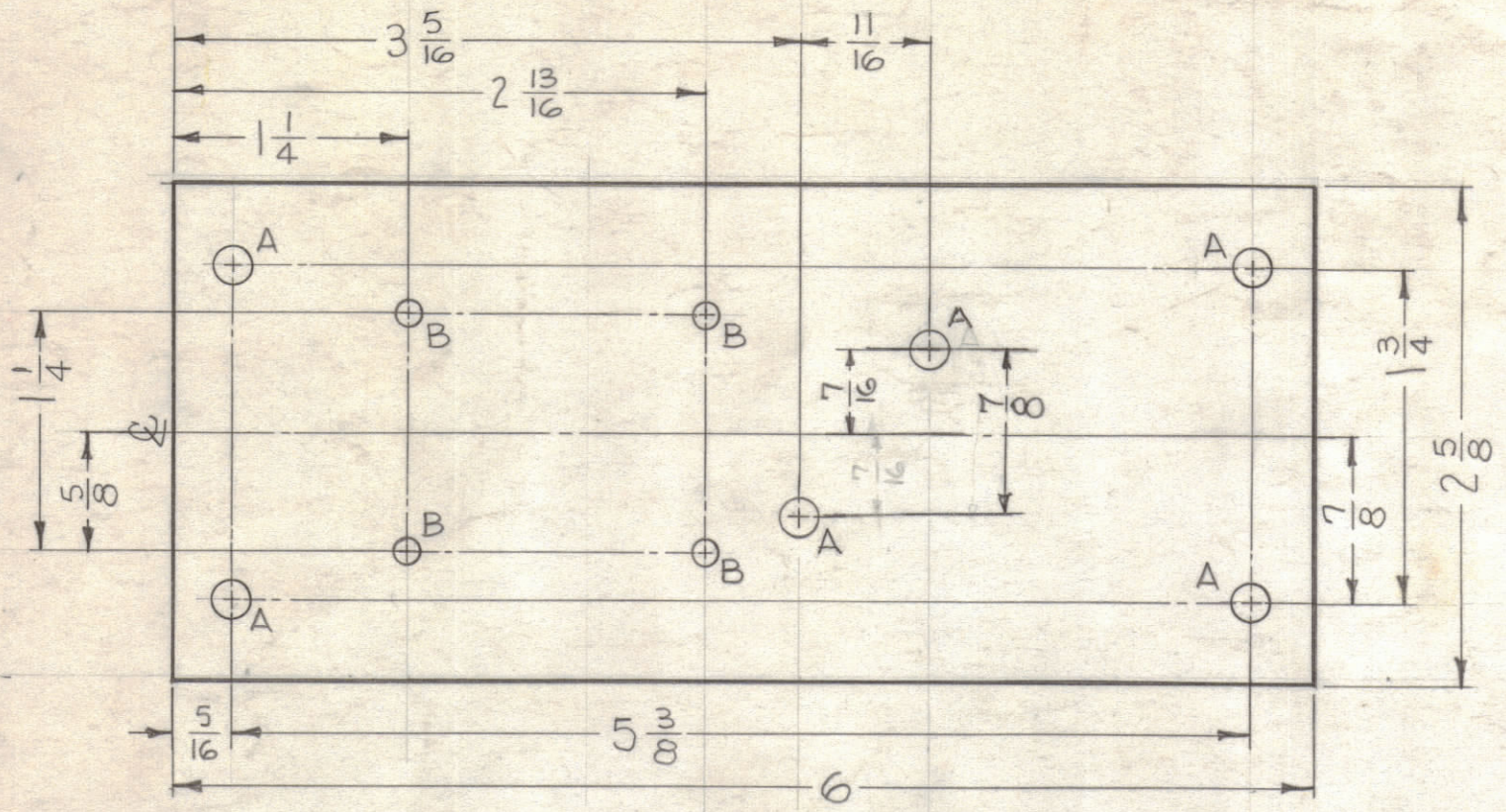
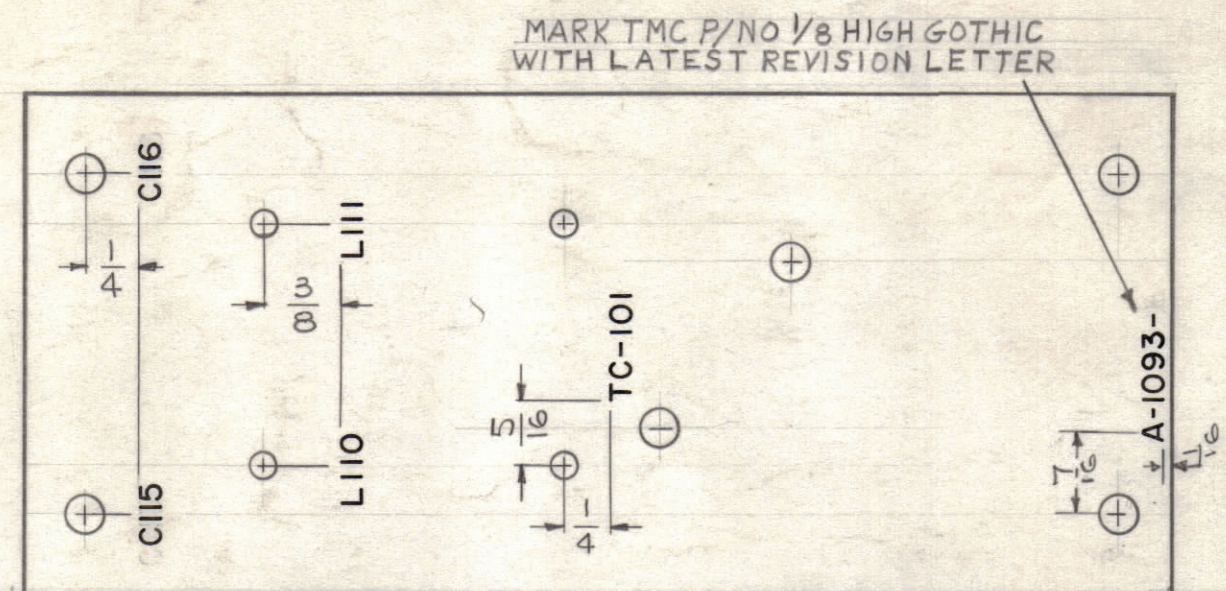


LEGEND		
HOLE	DESCRIPTION	REQ.
A	*12 DRILL (.189)D.	6
B	*33 DRILL (.113)D.	4
C	*34 DIA	6

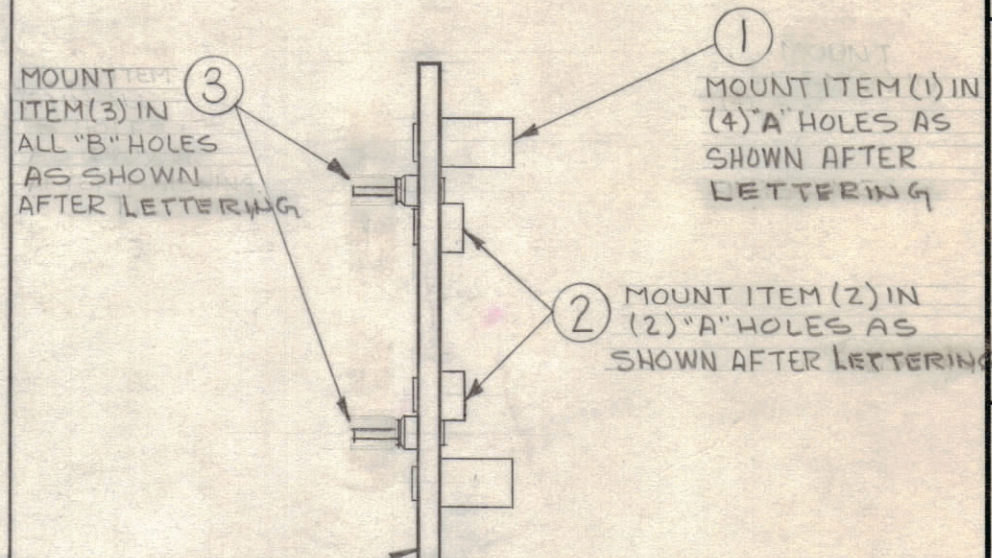
REVISIONS						
ZONE	SYM	DESCRIPTION	DATE	E.M.N. NO.	DRAFT	CHKD
-	B	REDRAWN & REVISED	2-5-63	8167		
D4,5	C	STAGE (4) IT. (1), JUMPER TO LINE LUG DELE.	12-28-64	13156	2L	
	D	IT 13 ADDED; IT 4 WAS CM 2085013 TITLE WAS "FINAL ASSEMBLY, AX143"; SPARE PARTS NOTE ADD CHG'D IT 8 FR TE 163 TO TE 117-30. ADDED IT'S. 14 TO 17	11.18.66	17263	440	
	E	IT. 18, 19 & *NOTE ADDED, PICTORIAL CLARIFIED	7-5-67	18363	L.A.K.	



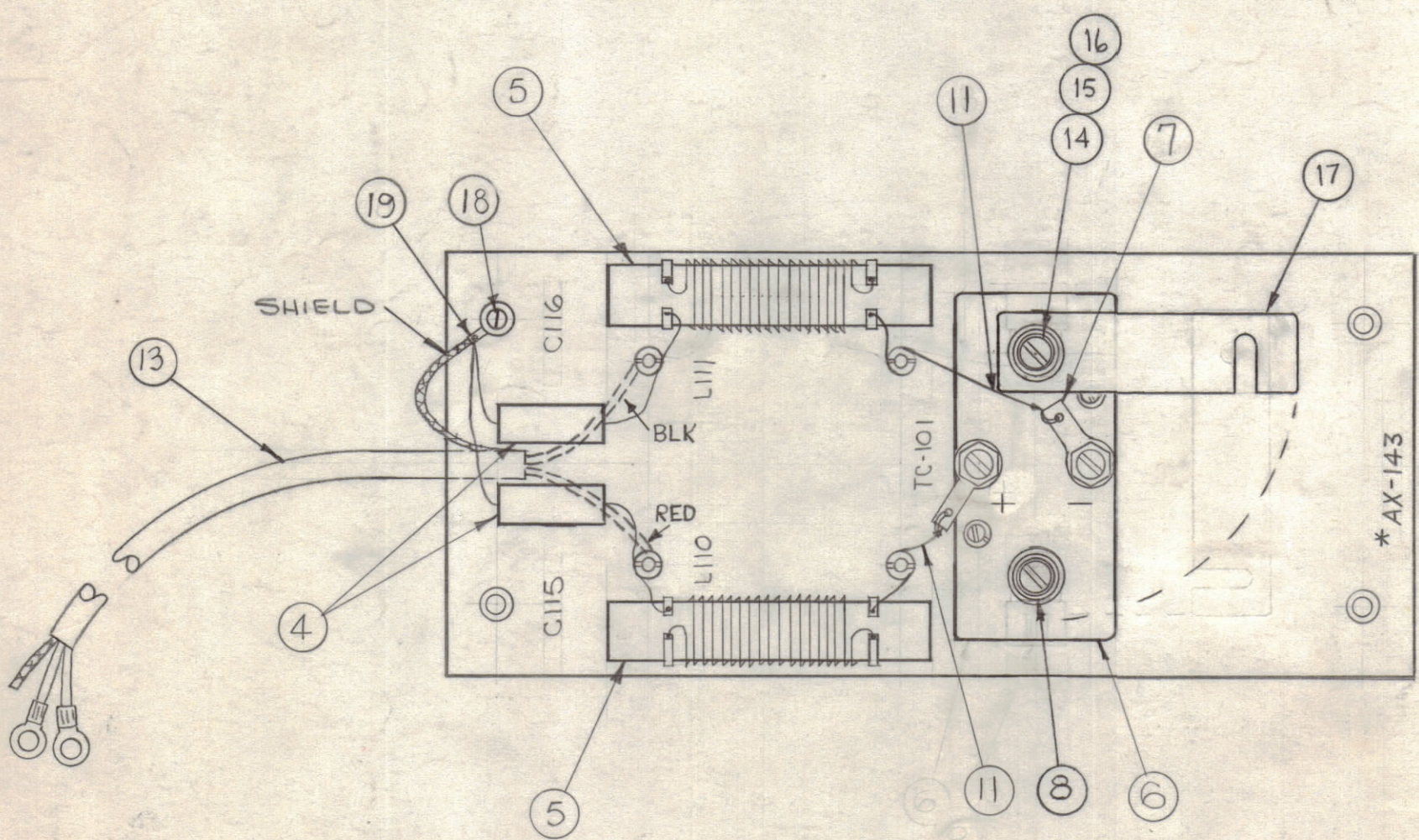
STAGE 1 - MACHINING - 1/8 THICK, PHENOLIC, XXXP LAMINATE (A-1093-1)  
FINISH: NATURAL



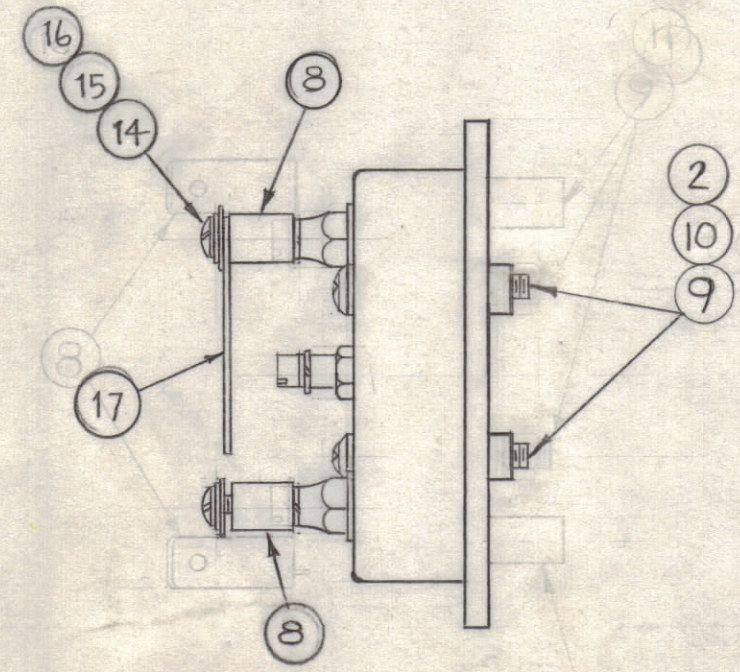
MARKING PROCESS: AS PER TMC SPECIFICATION S-727  
LETTERING: 1/8 HIGH, BLACK GOTHIC, LOCATED AS SHOWN.



STAGE 3 - SUB-ASSY. (A-1093-3)



STAGE 4 - FINAL ASSEMBLY (A-1093-4)



REQ'D.	ITEM	PART NUMBER	DESCRIPTION	SYMBOL
1	19	TE-104-2	TERM, LUG, LKG	
1	18	SCBP0632BN5	SCREW, MACHINE	
1	17	MS 3284-52	STRAP, ELECTRICAL	
2	16	LW505MRN	LOCKWASHER, SPLIT	
2	15	FW06HBN	WASHER, FLAT	
2	14	SCBP0540BN10	SCREW, MACHINE	
1	13	CA283	CABLE, RF METER	
X	12	BS-100	SOLDER, SOFT	
X	11	WL-100-7	WIRE, BUSS	
2	10	FW04HBN	WASHER, FLAT	
2	9	SCBP0440BN14	SCREW, MACHINE	
2	8	TE 117-30	SPACER HOISTING	
2	7	TE-113-149	LUG, SOLDER	
1	6	TH-100-8	THERMOCOUPLE, EXTERNAL	TC101
2	5	CL-178	COIL, R.F., FIXED	L110, L111
2	4	CM15E501603YY	CAPACITOR, FIXED, MICA	C115, C116
4	3	TE-109-3	LUG, TERMINAL	B
2	2	TE-164-8	STANDOFF, RIVET TYPE	
4	1	TE-108-13	STANDOFF, RIVET TYPE	

LIST OF MATERIAL	
MATERIAL	SEE STAGE 1
FINISH	SEE STAGE 1
THE TECHNICAL MATERIEL CORP. MAMARONECK, NEW YORK	
TITLE: FINAL ASSEMBLY, TERM BOARD	
DRAWN: <i>g. jensen</i>	DATE: 7-5-63
CHECKED: <i>H. De</i>	DATE: 2-15-63
ELECT. DES.:	DATE:
MECH. DES.:	DATE:
SHEET: A-1093	
REV. LTR.:	

NOTICE TO PERSONS RECEIVING THIS DRAWING

THE TECHNICAL MATERIEL CORPORATION claims proprietary right in the material disclosed herein. This drawing is issued in confidence for engineering information only and may not be reproduced or used to manufacture anything shown hereon without permission from THE TECHNICAL MATERIEL CORPORATION to the user. This drawing is loaned for mutual assistance and is subject to recall at any time.

USE AX143 FOR SPARE PARTS,  
\* HAND STAMP WHEN SHIPPED ON SPARES ORDER.

Property of:  
THE TECHNICAL MATERIEL CORPORATION  
MAMARONECK, NEW YORK

Q'TY./UNIT	MODEL USED ON	ASS'Y. NO.
1	RTF-2	
1	RTF	
SCALE	CODE	

THE CONTENTS OF THIS DRAWING ARE THE EXCLUSIVE PROPERTY OF THE TECHNICAL MATERIEL CORP. ITS UNAUTHORIZED USE OR REPRODUCTION IN WHOLE OR IN PART IS STRICTLY FORBIDDEN.

UNLESS OTHERWISE SPECIFIED DIMENSIONS ARE IN INCHES AND INCLUDE CHEMICALLY APPLIED OR PLATED FINISHES

DECIMALS	FRACTIONS
.X ± .05	± 1/64
.XX ± .01	ANGLES ± 0° 30'
.XXX ± .005	

NOTES