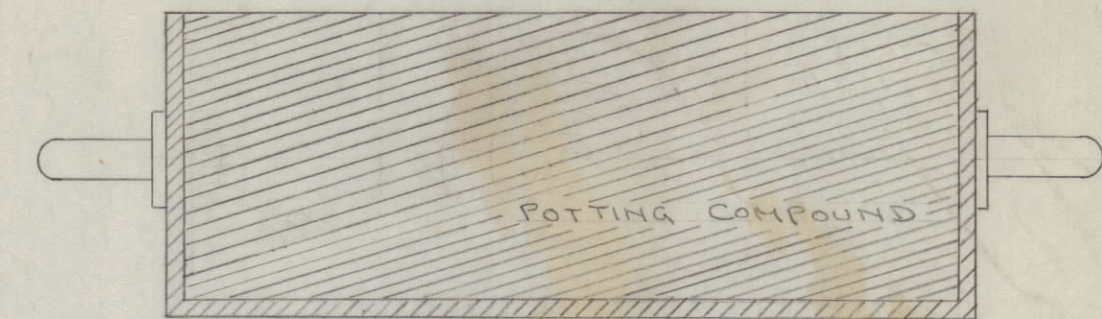


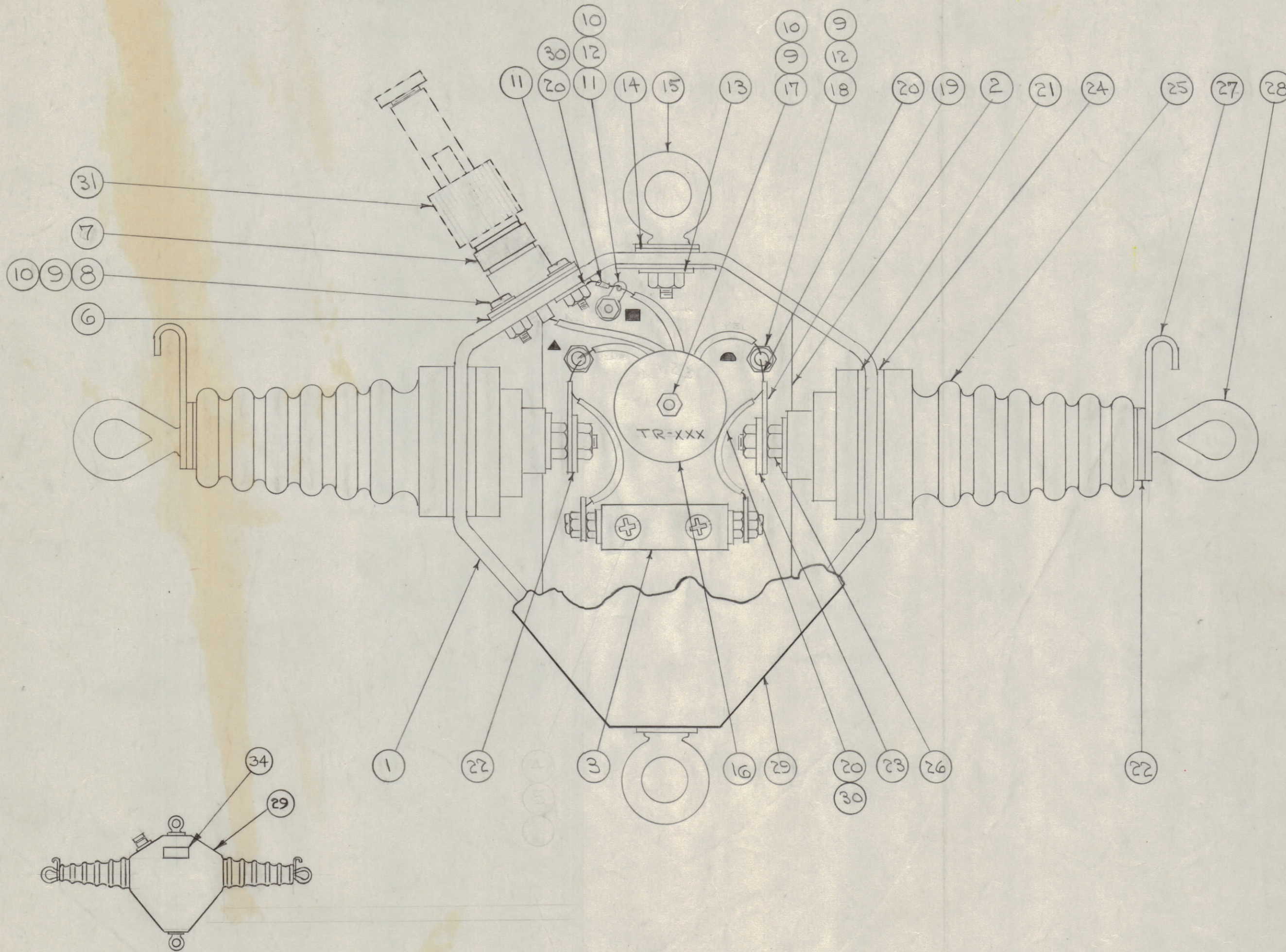
IF IT IS FOUND DESIRABLE TO CHANGE ANY TOLERANCE OR OTHER DETAIL SPECIFIED ON THIS DRAWING NOTIFY THE PURCHASER PROMPTLY.

MAXIMUM ALLOWABLE TOLERANCES HAVE BEEN DETERMINED AND DEVIATIONS WILL BE CAUSE FOR REJECTION. REMOVE ALL BURRS AND SHARP EDGES

ASSY	MODEL	ITEM 7	ITEM 16	CONNECTIONS					ITEM 31
				TERM.1	TERM.2	TERM.3	TERM.4	TERM.5	
A1089-1	DAC-1	UG-58A/U	TR-030	UG-58A/U	■	▲	◐		UG-21B/U
A1089-3	DAC-3	OBSOLETE - USE DAC-4							
A1089-4	DAC-4	UG-58A/U	TR-039	UG-58A/U	■	▲	◐		UG-201/U UG-260/U
A1089-5	DAC-5	UG-103/U	TR-030	UG-103/U	UG-103/U	▲	◐		UG-102/U UG-103/U
A1089-6	DAC-6	UG-58A/U	TR-120	UG-58A/U	■	◐	▲	■	UG-21B/U
A1089-14	DAC-14	50-239	TR-091	■	50-239A	▲	◐		PL-259A-TEF



POTTING DETAIL
 POT AS SHOWN ABOVE. MAKE SURE ALL CONNECTIONS ARE COVERED.
 ATTACH ITEM 29 TO ITEM 1 WITH ITEM 33



1	34	NP-222-1	NAMEPLATE, IDENTIFICATION	
X	33	GL-106	COMPOUND, POTTING	
X	32	BS-100	SOLDER, SOFT	
	31	SEE CHART	CONNECTOR, PLUG	LOOSE ITEM
X	30	PX-104-1-.066	INSULATION, SLEEVING	
1	29	PM-231	COVER	
2	28	SC-149	BOLT, EYE	
2	27	MS-347	SERVICING HOOK	
4	26	SUPPLIED WITH INSULATOR	NUT, HEX	
2	25	NS-107	INSULATOR	
2	24	GA-115	GASKET, NEOPRENE	
4	23	LWS25MSS	WASHER, LOCK	
4	22	SUPPLIED WITH INSULATOR	WASHER, FLAT	

A-1089 C

2	21	SUPPLIED WITH INSULATOR	GASKET, CORK	
X	20	WL-100-3	WIRE, BUSS BAR	
2	19	TE-132	TERMINAL	
2	18	TE-102-2	" , TURRET	
1	17	SCBP04408N12	SCREW, MACHINE	
	16	SEE CHART	TRANSFORMER	
2	15	SC-116C	EYE BOLT	
2	14	GA-114	GASKET	
4	13	LWS25MSS	WASHER, LOCK	
3	12	SCBP04408N4	SCREW, MACHINE	
2	11	TE-104-1	TERMINAL, LOCKING	
6	10	NTH0408N8	NUT, HEX	
7	9	LWE04MRN	WASHER, LOCK	
4	8	SCBP04408N8	SCREW, MACHINE	
7		SEE CHART	RECEPTACLE	
1	6	GA149-5	GASKET	
	5		DELETED	
	4		DELETED	
1	3	A-883	SPARK ROD HOLDER ASSY.	
1	2	MS-348	PLATE, MOUNTING	
1	1	PM-232	CASE	

REQ. ITEM	PART NO.	DESCRIPTION	SYMBOL
THE TECHNICAL MATERIEL CORP.			
MAMARONECK, NEW YORK			
FINAL ASSEMBLY			
MODEL DAC-SERIES			
STOCK SIZE		DRAWN 9/8/55	
MATERIAL		ELEC. DES. APP. <i>[Signature]</i>	
WEIGHT PER PC.		MECH. DES. APP. <i>[Signature]</i>	
TYPE & TEMPER.		HEAT TREAT. SPEC. CHECKED	
HEAT TREAT. SPEC.		FINAL APPROVAL	
FINISH & SPEC. NO.		A-1089 C	

C	1	ITG WAS GA106	Pls/65	15402	AV.V.	<i>[Signature]</i>	<i>[Signature]</i>
B	9	TR-XXX WAS TR-120					
	8	▲●■ SYMBOLS ADDED					
	7	ONTITLE: DAC-SERIES WAS DAC-6					
	6	COLOR CODE ON TR. WIRING DELETED					
	5	IT. 16 WAS TR-120, IT. 31 WAS UG-21B/U	6.18.64	11558	<i>[Signature]</i>	<i>[Signature]</i>	<i>[Signature]</i>
	4	PICT. W/IT. 34 ADD. IT. 34 ADD					
	3	IT. 7 WAS UG-58A/U, IT. 15 WAS SC16					
	2	POTTING DETAIL CLARIFIED					
	1	ASSY# CHART ADDED					
A	4	ITEM (5) WAS NTH0632BQ10 2 REQD					
	3	ITEM (4) WAS LWE06MRC 2 REQD					
	2	ITEM (28) WAS PM-778	6.18.63	9267	<i>[Signature]</i>	<i>[Signature]</i>	<i>[Signature]</i>
	1	HWK UPDATED & STANDARDIZED					
ISSUE	ITEM	CHANGED FROM	DATE	CN. NO.	DRAFTS	CHECKER	ENG. APP.
TOLERANCES			SCALE:				
ALL OTHERS	DEC. DIM. ± FRAC. DIM. ± ANGULAR DIM. ±		DRILL, PUNCH, COMMERCIAL STOCK SIZES AND MANUFACTURERS TOLERANCES ARE NOT INCLUDED.				

1	DAC-SERIES			9-8-55
REQ PER UNIT	MODEL	PROJECT NO.	ASS'Y. NO.	DATE
	USED ON			