

IF IT IS FOUND DESIRABLE TO CHANGE ANY TOLERANCE OR OTHER DETAIL SPECIFIED ON THIS DRAWING NOTIFY THE PURCHASER PROMPTLY.

MAXIMUM ALLOWABLE TOLERANCES HAVE BEEN DETERMINED AND DEVIATIONS WILL BE CAUSE FOR REJECTION. REMOVE ALL BURRS AND SHARP EDGES

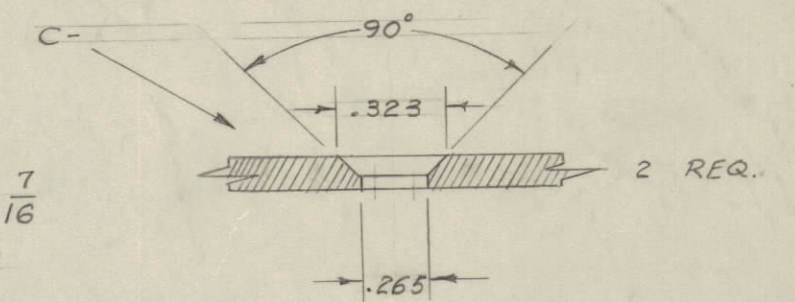
NOTICE TO PERSONS RECEIVING THIS DRAWING

THE TECHNICAL MATERIEL CORPORATION claims proprietary right in the material disclosed hereon. This drawing is issued in confidence for engineering information only and may not be reproduced or used to manufacture anything shown hereon without permission from THE TECHNICAL MATERIEL CORPORATION to the user. This drawing is loaned for mutual assistance and is subject to recall at any time.

Property of:

THE TECHNICAL MATERIEL CORPORATION
MAMARONECK, NEW YORK

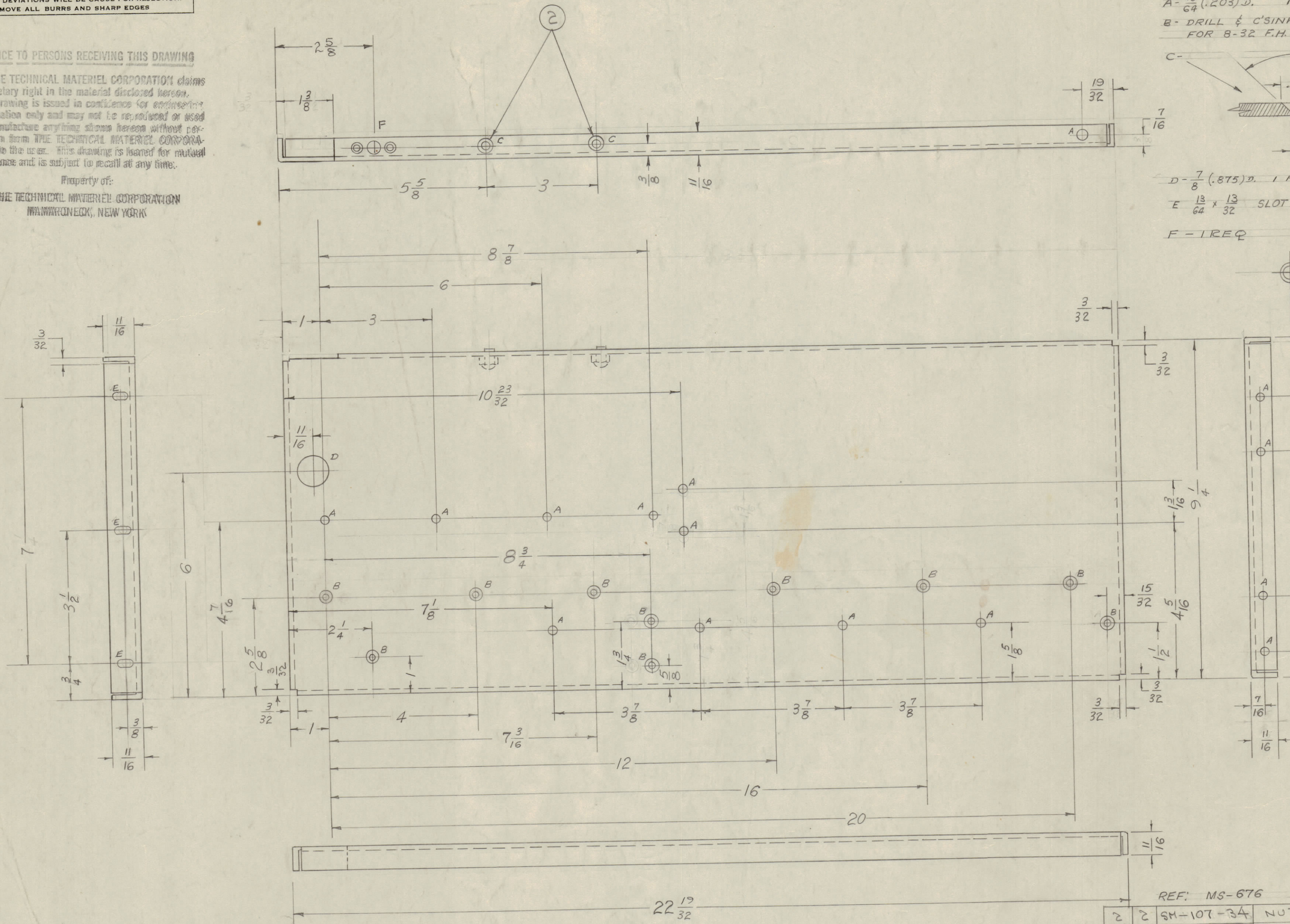
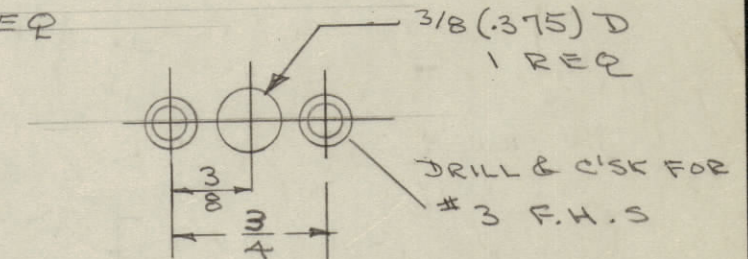
A - $\frac{13}{64}$ (.203) D. 15 HOLES REQ.
B - DRILL & C'SINK FOR 8-32 F.H.S. 10 HOLES REQ.



D - $\frac{7}{8}$ (.875) D. 1 HOLE REQ.

E - $\frac{13}{64} \times \frac{13}{32}$ SLOT 3 REQ.

F - 1 REQ



A-1081 D

BLANK SIZE
10 3/8 X 23 23/32

REF: MS-676

2	2	SM-107-34	NUT, STOP	
1	1	MS-672	CENTER SUPPORT (NO DRAWING)	
REQ. ITEM		PART NO.	DESCRIPTION	SYMBOL
		.081	THE TECHNICAL MATERIEL CORP.	
		STOCK SIZE	MAMARONECK, NEW YORK	
		ALUMINUM	CENTER SUPPORT ASSY.	
		MATERIAL	POWER SUPPLY - GPT-750	
		5052 H 32		
		TYPE & TEMPER		
		HEAT TREAT. SPEC.		
		FINISH & SPEC. NO.		
			DRAWN	ELEC. DES. APP.
			MECH. DES. APP.	
			CHECKED	FINAL APPROVAL
			A. J. J.	
			A-1081 D	

ISSUE	ITEM	CHANGED FROM	DATE	CN. NO.	DRAFTS	CHECKER	ENG. APP.
D	1	S404-IRIDITE WAS S101 CAUSTIC DIP	12-8-59	1001	JP		EMN
C	1	1/8 NOTCH WAS 7/16 LIP CONT'D NOTCH TO BEHD	4/7/58	417	RAC	JHE	JP
B	1	F' DETAIL ADDED	9/2/56	2	JHE	JP	JP
A	1	SLOTS WERE 1/64 X 1/32	4/29/56	1	CGD	JHE	JP

SCALE: HALF

TOLERANCES: DEC. DIM. ±, FRAC. DIM. ± 1/64, ANGULAR DIM. ±

DRILL, PUNCH, COMMERCIAL STOCK SIZES AND MANUFACTURERS TOLERANCES ARE NOT INCLUDED.

1	RTP			8-17-55
REQ. PER. UNIT	MODEL	PROJECT NO.	ASS'Y. NO.	DATE
USED ON				