

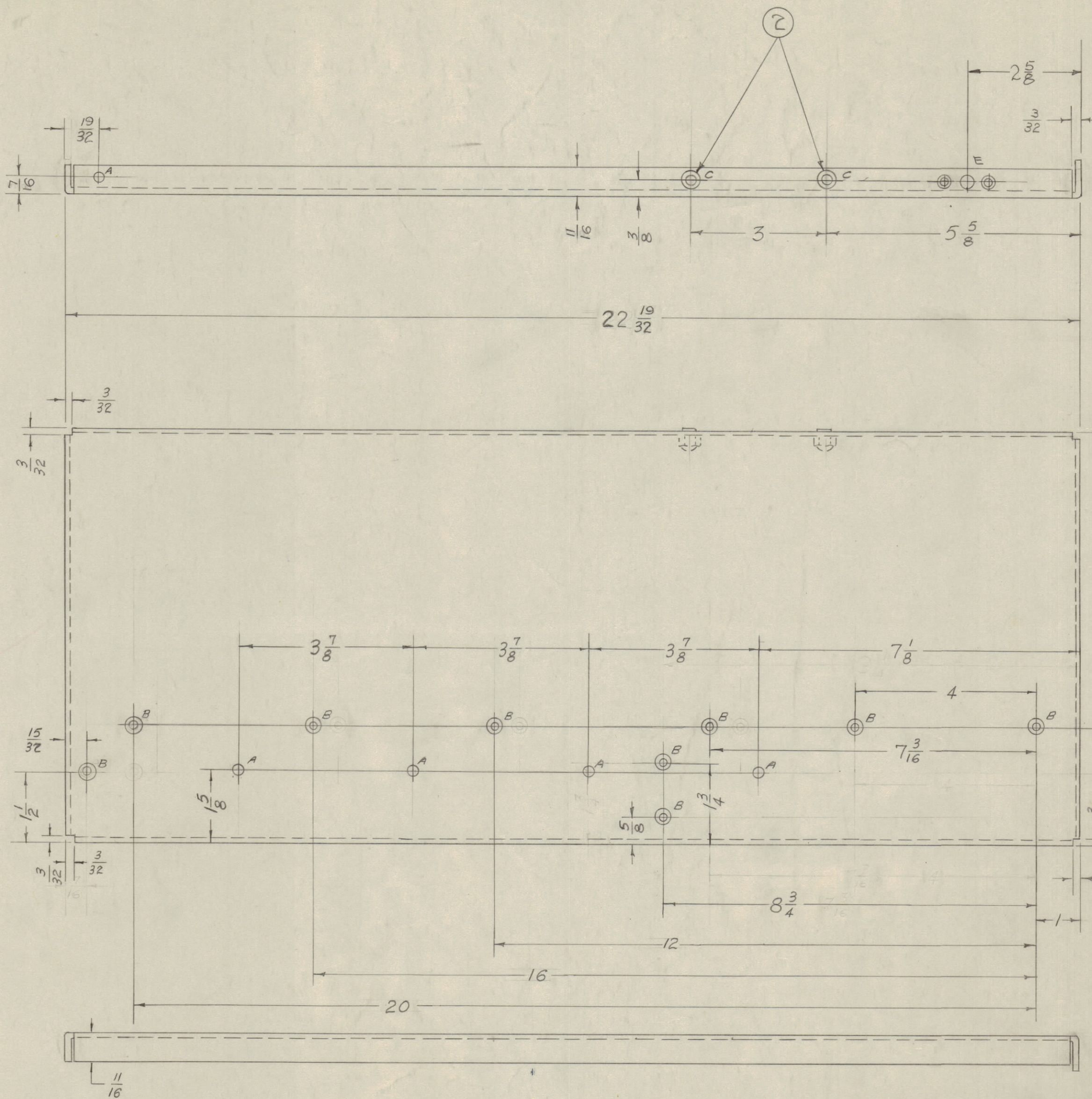
IF IT IS FOUND DESIRABLE TO CHANGE ANY TOLERANCE OR OTHER DETAIL SPECIFIED ON THIS DRAWING NOTIFY THE PURCHASER PROMPTLY.

MAXIMUM ALLOWABLE TOLERANCES HAVE BEEN DETERMINED AND DEVIATIONS WILL BE CAUSE FOR REJECTION. REMOVE ALL BURRS AND SHARP EDGES

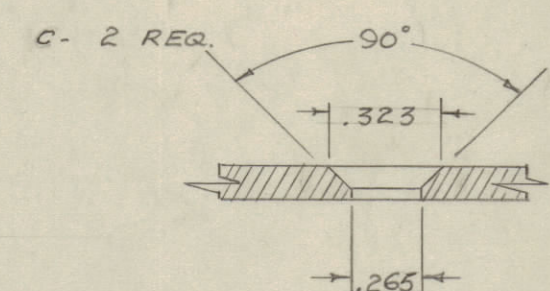
NOTICE TO PERSONS RECEIVING THIS DRAWING

THE TECHNICAL MATERIEL CORPORATION claims proprietary right in the material disclosed hereon. This drawing is issued in confidence for engineering information only and may not be reproduced or used to manufacture anything shown hereon without permission from THE TECHNICAL MATERIEL CORPORATION to the user. This drawing is loaned for mutual assistance and is subject to recall at any time.

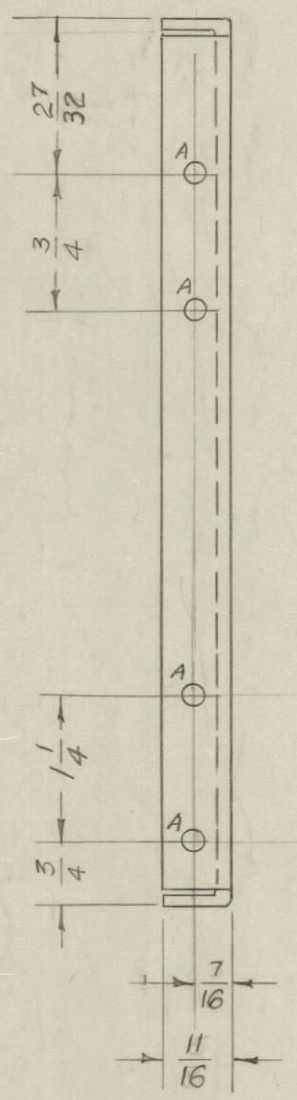
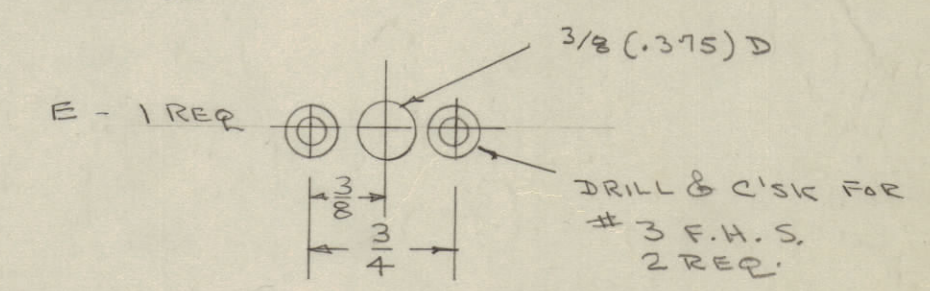
Property of:
THE TECHNICAL MATERIEL CORPORATION
MAMARONECK, NEW YORK



A - $\frac{13}{64}$ (.203) D. 9 HOLES REQ.
B - DRILL & C'SINK FOR 8-32 F.H.S. 9 REQ.



D - $\frac{13}{64} \times \frac{13}{32}$ SLOTS 3 REQ.



A-1080 C

BLANK SIZE
10 3/8 x 23 27/32

C	1	S404-IRIDITE WAS S101-CAUSTIC DIP	12-59	1001	EMN	
B	1	"D" SLOT WAS 1/64 x 1/32	1/9/56	2	16 HIG WOC	
A	1	"E" DETAIL ADDED	7/7/56	1	16 HIG WOC	
ISSUE	ITEM	CHANGED FROM	DATE	CN. NO.	DRAFTS CHECKER	ENG. APP.
TOLERANCES		SCALE: HALF				
ALL OTHERS	DEC. DIM. ±	DRILL, PUNCH, COMMERCIAL STOCK SIZES AND MANUFACTURERS TOLERANCES ARE NOT INCLUDED.				
	FRAC. DIM. ±					
	ANGULAR DIM. ±					

1	RTP			8-17-55
REQ. PER UNIT	MODEL	PROJECT NO.	ASS'Y. NO.	DATE

2	2	SM-107-34	NUT, STOP
1	1	MS-673	LEFT SIDE SUPPORT (NO DRAWING)
REQ. ITEM	PART NO.	DESCRIPTION	
.081		THE TECHNICAL MATERIEL CORP.	
STOCK SIZE		MAMARONECK, NEW YORK	
ALUMINUM		LEFT SIDE SUPPORT	
MATERIAL		WEIGHT PER PC.	
5052 - H 32		ASSEMBLY GPT-750	
TYPE & TEMPER		NO 8-17-55	
DRAWN		ELEC. DES. APP. MECH. DES. APP.	
HEAT TREAT. SPEC.		CHECKED	
FINISH & SPEC. NO.		FINAL APPROVAL	
S404-YEL IRIDITE		A.J.J.	
		A-1080 C	