

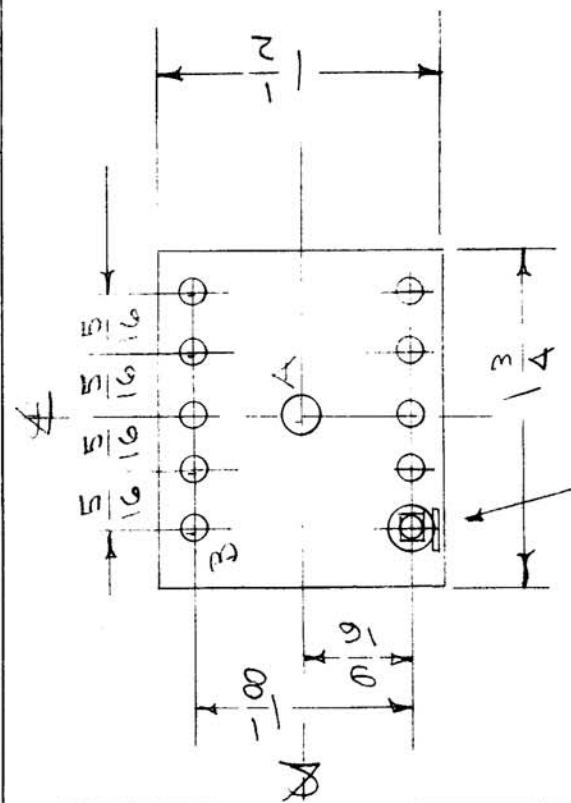
A-1075

USED ON  
 PROJECT NO. ASSY. NO. DATE  
 MODEL GPR A-1078 8/22/51

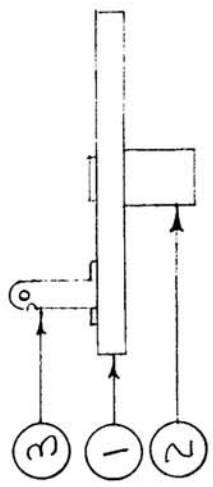
REQ. PER UNIT  
 1

A- NO. 12 (185) DIA. 1 HOLE REQ.  
 B- NO. 29 (.140) " 10 " "

THIS DRAWING FOR  
 MARK I SERIES  
 ONLY.



NOTE POSITION OF LUGS.



REQ. ITEM	PART NO.	DESCRIPTION	SYMBOL
10	3	TE-151 LUG	
1	2	TE-108-1 STANDOFF	
1	1	PX-234 TERM. BD. (NO DWG)	

THE TECHNICAL MATERIEL CORP.  
 MAMARONECK, NEW YORK  
 TERMINAL BOARD SUB ASSY.  
 HIGH PASS FILTER GPR  
 CDD. 8/24/51  
 DRAWN THH  
 ELEC. DES. APP. MECH. DES. APP.  
 G.T.O.  
 CHECKED  
 FINAL APPROVAL  
 A-1075

REQ. ITEM	PART NO.	DESCRIPTION	SYMBOL
1/16 THK.			
STOCK SIZE			
PHEENOLIC			
MATERIAL			
WEIGHT PER PC.			
XXXXP LAMINATE			
TYPE & TEMPER			
H			
HEAT TREAT. SPEC.			
NATURAL			
FINISH & SPEC. NO.			

IF IT IS FOUND DESIRABLE TO CHANGE ANY TOLERANCE OR OTHER DETAIL SPECIFIED ON THIS DRAWING NOTIFY THE PURCHASER PROMPTLY.

MAXIMUM ALLOWABLE TOLERANCES HAVE BEEN DETERMINED AND DEVIATIONS WILL BE CAUSE FOR REJECTION. REMOVE ALL BURRS AND SHARP EDGES

ISSUE ITEM CHANGED FROM DATE CN. NO. DRAFTS CHECKER ENG. APP.  
 SCALE  
 TOLERANCES  
 DEC. DIM. ±  
 ALL FRACTIONAL DIM. ± 1/64  
 OTHERS ANGULAR DIM. ±  
 DRILL, PUNCH, COMMERCIAL STOCK SIZES AND MANUFACTURERS TOLERANCES ARE NOT INCLUDED.